

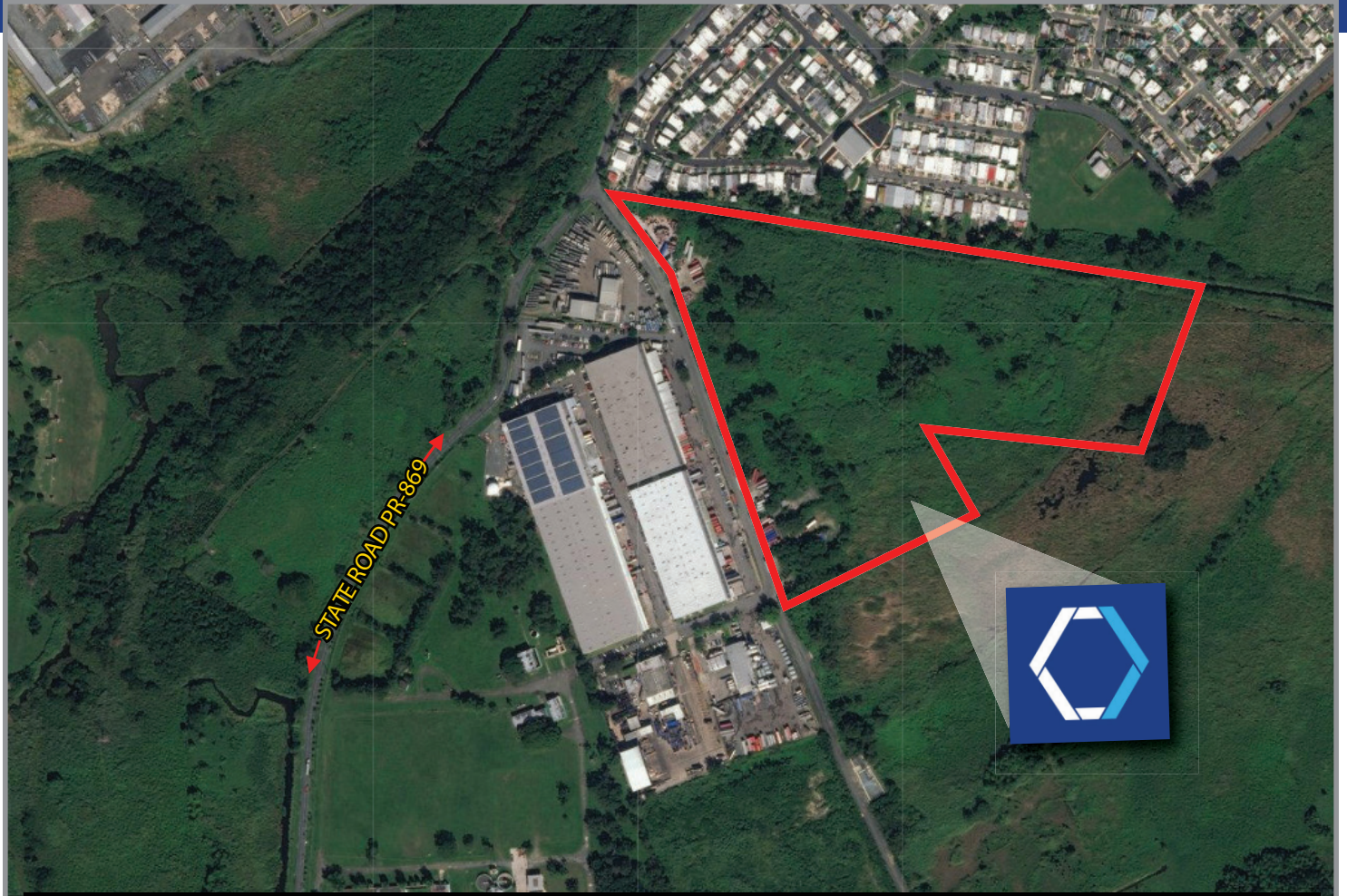


CHRISTIANSEN
COMMERCIAL REAL ESTATE

License 134

Cataño, Puerto Rico

INDUSTRIAL LOT FOR SALE



DESCRIPTION:

Vacant lot consisting of approximately **30.50 cuerdas**, equivalent to **119,877 square meters** located in Palmas Ward, Cataño.

LOCATION:

Industrial land lot, Km. 1.1 of PR-869, Palmas Ward, Las Palmas Street, Cataño, Puerto Rico

SITE AREA:

30.50 cuerdas, equivalent to 119,877 square meters

ZONING:

I-L, Light Industrial

SITE COORDINATES:

Latitude: 18°26'43.75"N, Longitude: 66° 8'58.17"W

LOCATION INFLUENCE:

The property is located in an urban neighborhood, near many light industrial logistics operations and Royal Industrial Park. The property has access to State Road PR-865 and State Road PR-165.

In the immediate vicinity of many office, residential, commercial and retail establishments including restaurants, fast food establishments, schools, and other related services.

For more information: WWW.CHRISTIANSENCOMMERCIAL.COM

