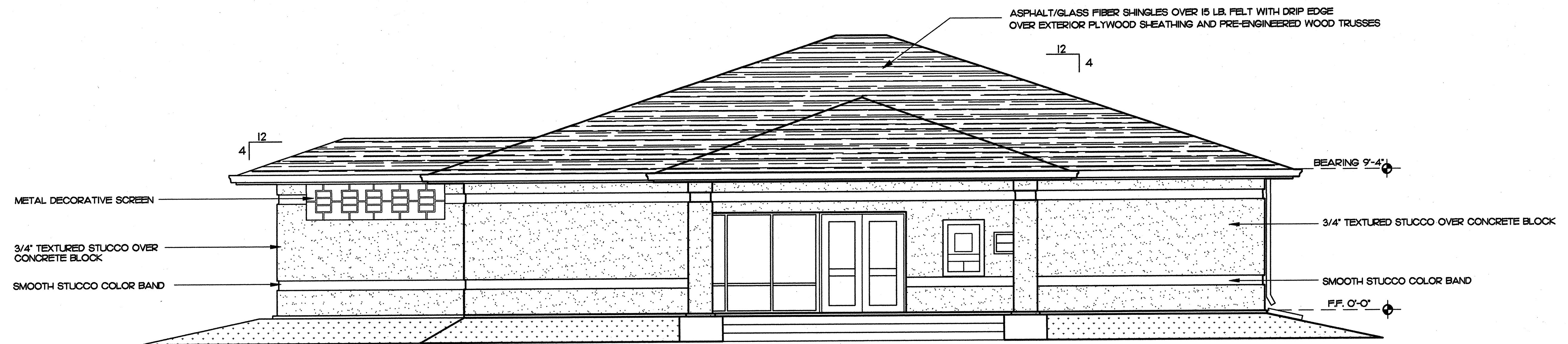


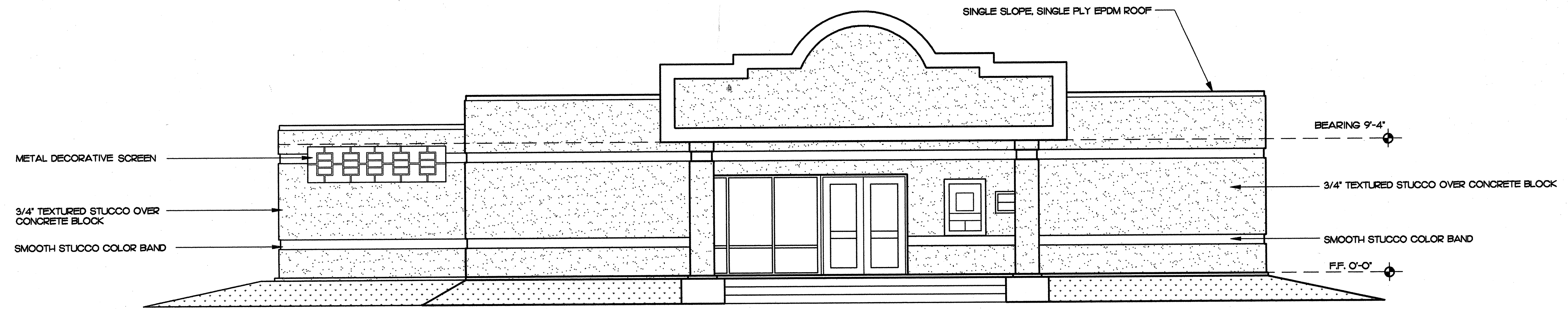
1 FRONT ELEVATION - HIP ROOF OPTION

(STANDING METAL SEAMED ROOF AND SPLIT FACED CONCRETE BLOCK) 1/4" = 1'-0"
 (APPROXIMATE COST OF \$115.00 PER SQUARE FOOT)



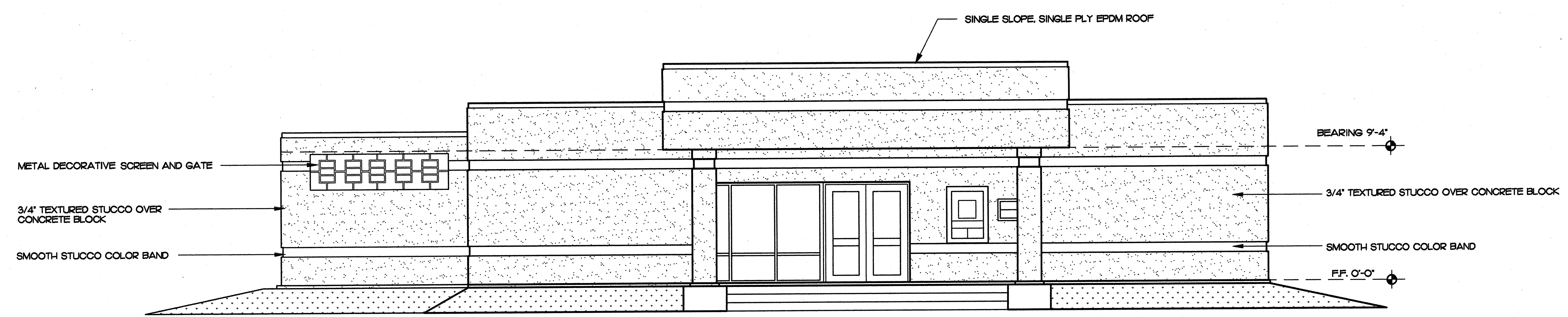
2 FRONT ELEVATION - HIP ROOF OPTION

(ASPHALT/GLASS FIBER SHINGLES AND STUCCO OVER CONCRETE BLOCK) 1/4" = 1'-0"
 (APPROXIMATE COST OF \$105.00 PER SQUARE FOOT)



3 FRONT ELEVATION - SINGLE SLOPE ROOF OPTION

(SINGLE PLY EPDM ROOF AND STUCCO OVER CONCRETE BLOCK) 1/4" = 1'-0"
 (APPROXIMATE COST OF \$107.00 PER SQUARE FOOT)



3 FRONT ELEVATION - SINGLE SLOPE ROOF OPTION

(SINGLE PLY EPDM ROOF AND STUCCO OVER CONCRETE BLOCK) 1/4" = 1'-0"
 (APPROXIMATE COST OF \$107.00 PER SQUARE FOOT)

REVISIONS	BY
OWNER'S REVIEW 5-12-99	CDA

ARTERBURY ARCHITECTS, INC.
 AAC-001777
 (407) 774-2233
 (407) 774-7377
 2400 SAND LAKE ROAD
 LONGWOOD, FLORIDA 32779

FAIRWINDS FEDERAL CREDIT UNION
 PRESIDENTS DRIVE @ SANDLAKE ROAD
 ORLANDO, FLORIDA
 FACILITY PARTNERS GROUP FPG
 P.O. BOX 196125
 CASSELBERRY, FLORIDA 32719

DRAWN CDA
CHECKED
DATE 4-27-99
SCALE 1/4"=1'-0"
JOB NO. 99046
DRAWING NO. A2
sheet A2 of A2