

OFFICE FOR SALE

1635 FARM WAY #409

1635 Farm Way #409, Middleburg, FL 32068



PROPERTY FEATURES

- Excellent office location between SR 23 & I-295
- 4 executive offices, conference room, large open cubicle / team work room, copy room, kitchen break room, wood laminate floors throughout, 2 restrooms and data / phone room
- Parking at the front and rear of the building
- Monument sign and signage on the front of the unit
- \$225,000



KW COMMERCIAL
4465 U.S. Hwy 17,
Suite 2
Orange Park, FL 32003

SANDRA KAHLE, CCIM
Managing Director
O 904.838.6446
C 904.838.6446
skahle@kahlecg.com

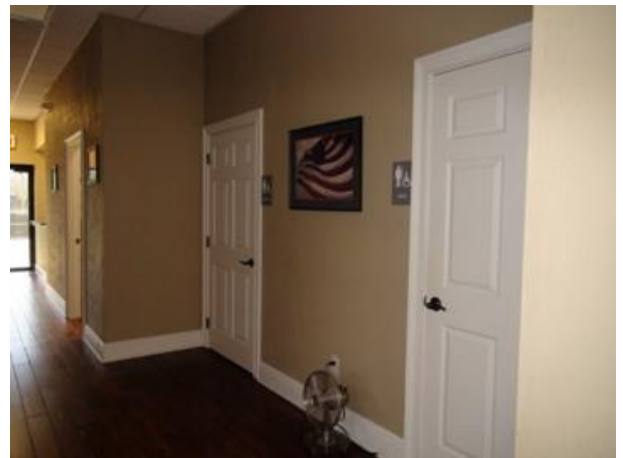
CYNTHIA MCLAIN, CCIM
Broker Associate
O 904.541.0700
C 904.545.4195
cmclain@kahlecg.com

The information contained herein has been obtained from sources deemed reliable. While every reasonable effort has been made to ensure its accuracy, we cannot guarantee it. No responsibility is assumed for any inaccuracies. Readers are encouraged to consult their professional advisors prior to acting on any of the material contained herein.

OFFICE FOR SALE

1635 FARM WAY #409

1635 Farm Way #409, Middleburg, FL 32068



KW COMMERCIAL
4465 U.S. Hwy 17,
Suite 2
Orange Park, FL 32003

SANDRA KAHLE, CCIM
Managing Director
O 904.838.6446
C 904.838.6446
skahle@kahlecg.com

CYNTHIA MCLAIN, CCIM
Broker Associate
O 904.541.0700
C 904.545.4195
cmclain@kahlecg.com

The information contained herein has been obtained from sources deemed reliable. While every reasonable effort has been made to ensure its accuracy, we cannot guarantee it. No responsibility is assumed for any inaccuracies. Readers are encouraged to consult their professional advisors prior to acting on any of the material contained herein.

OFFICE FOR SALE

1635 FARM WAY #409

1635 Farm Way #409, Middleburg, FL 32068



KW COMMERCIAL
4465 U.S. Hwy 17,
Suite 2
Orange Park, FL 32003

SANDRA KAHLE, CCIM
Managing Director
O 904.838.6446
C 904.838.6446
skahle@kahlecg.com

CYNTHIA MCLAIN, CCIM
Broker Associate
O 904.541.0700
C 904.545.4195
cmclain@kahlecg.com

The information contained herein has been obtained from sources deemed reliable. While every reasonable effort has been made to ensure its accuracy, we cannot guarantee it. No responsibility is assumed for any inaccuracies. Readers are encouraged to consult their professional advisors prior to acting on any of the material contained herein.

OFFICE FOR SALE

1635 FARM WAY #409

1635 Farm Way #409, Middleburg, FL 32068

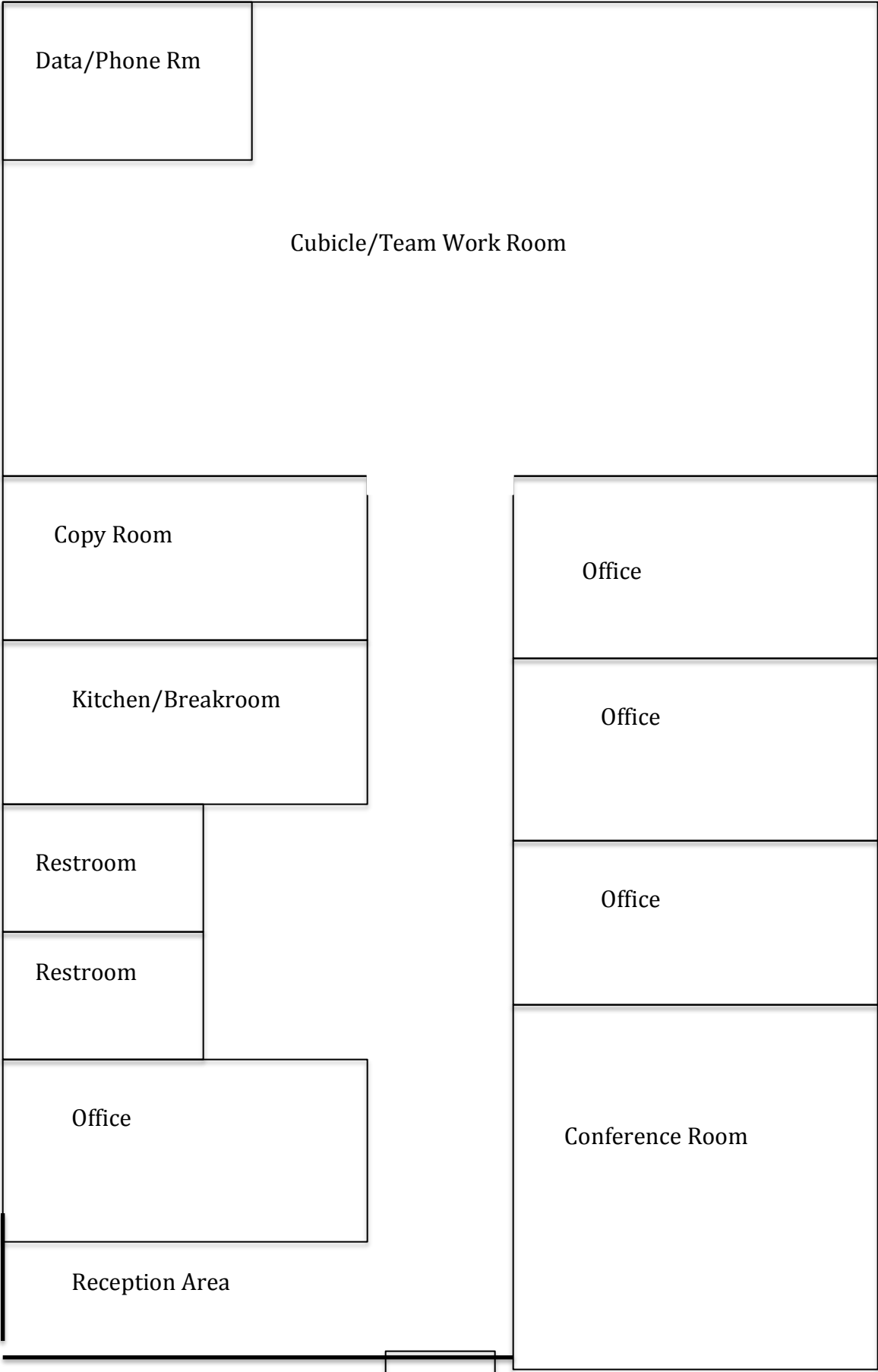


KW COMMERCIAL
4465 U.S. Hwy 17,
Suite 2
Orange Park, FL 32003

SANDRA KAHLE, CCIM
Managing Director
O 904.838.6446
C 904.838.6446
skahle@kahlecg.com

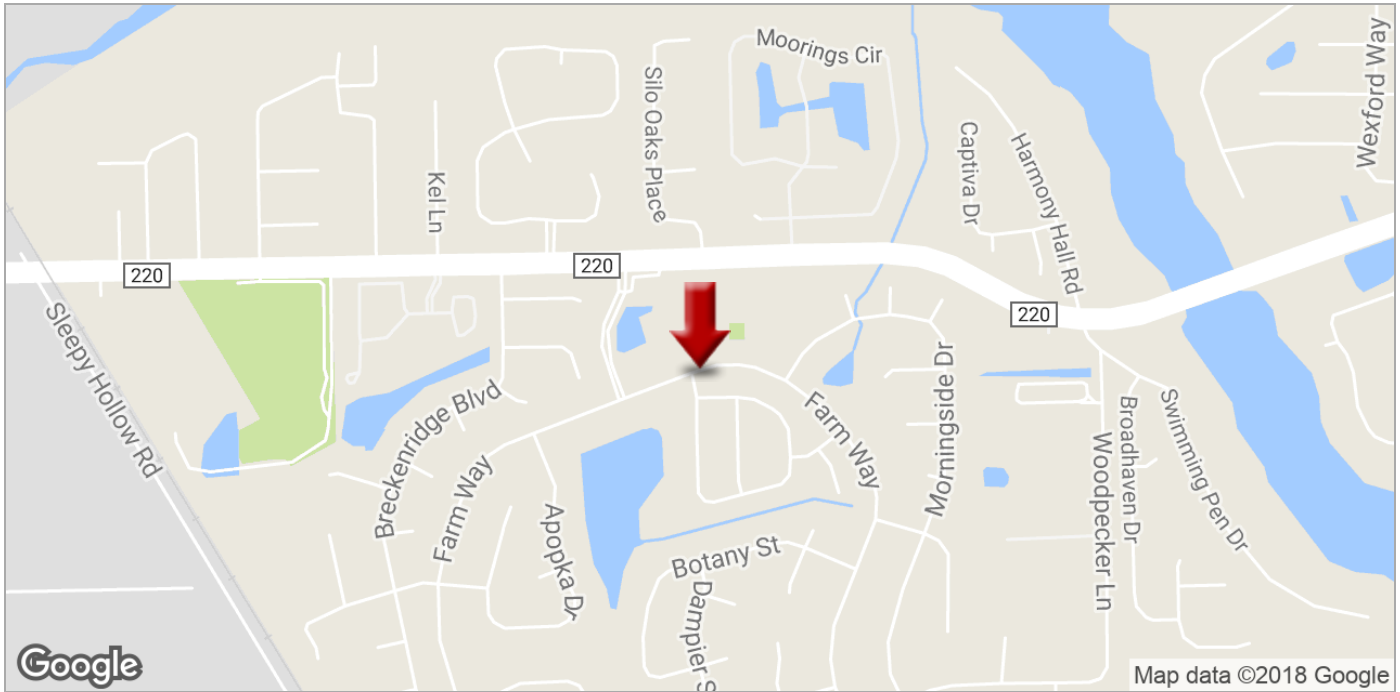
CYNTHIA MCLAIN, CCIM
Broker Associate
O 904.541.0700
C 904.545.4195
cmclain@kahlecg.com

The information contained herein has been obtained from sources deemed reliable. While every reasonable effort has been made to ensure its accuracy, we cannot guarantee it. No responsibility is assumed for any inaccuracies. Readers are encouraged to consult their professional advisors prior to acting on any of the material contained herein.



1635 FARM WAY #409

1635 Farm Way #409, Middleburg, FL 32068



KW COMMERCIAL
4465 U.S. Hwy 17,
Suite 2
Orange Park, FL 32003

SANDRA KAHLE, CCIM
Managing Director
O 904.838.6446
C 904.838.6446
skahle@kahlecg.com

CYNTHIA MCLAIN, CCIM
Broker Associate
O 904.541.0700
C 904.545.4195
cmclain@kahlecg.com

The information contained herein has been obtained from sources deemed reliable. While every reasonable effort has been made to ensure its accuracy, we cannot guarantee it. No responsibility is assumed for any inaccuracies. Readers are encouraged to consult their professional advisors prior to acting on any of the material contained herein.