

**HORSEY AVE & PALOVERDE DR, NEW PORT RICHEY, FL 34652**

**\$199,000**



**Warehouse  
For Sale**

## **WAREHOUSE NEAR TROUBLE CREEK**

**LOCATION:** At the corner of Horsey Ave. and Paloverde Dr. in New Port Richey. One block off of Trouble Creek Rd.

**AMENITIES:** Convenient location to U.S. Hwy. 19. 3,200SF of warehouse space and 500SF of mezzanine office space. New roof with a 27 year transferable warranty on parts and labor.

**FOR INFORMATION, CONTACT:**

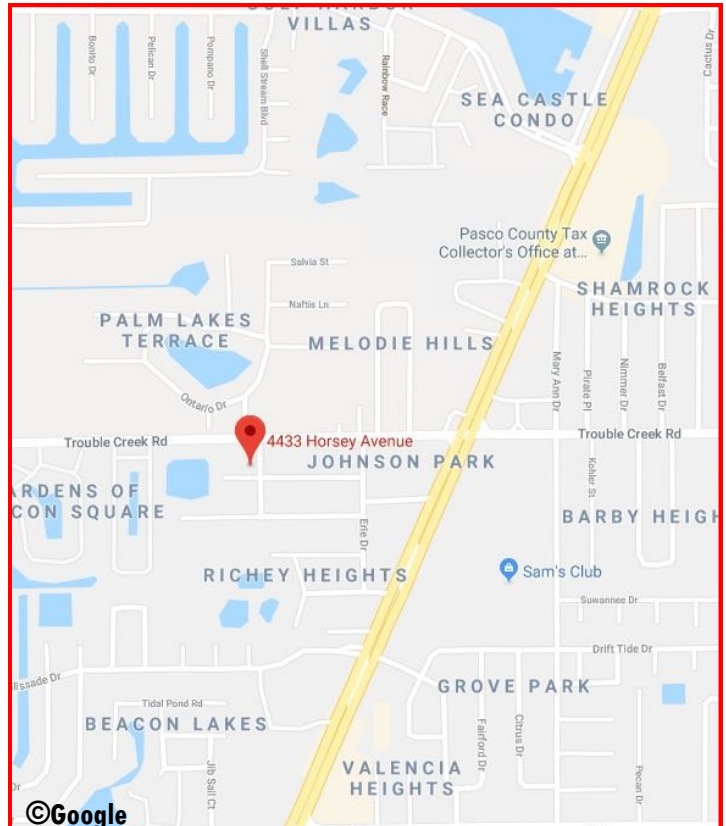
**John R. Grey**  
**John@figrey.com**

**Charles R. Grey**  
**Chuck@figrey.com**

**Office: (727) 849-2424**

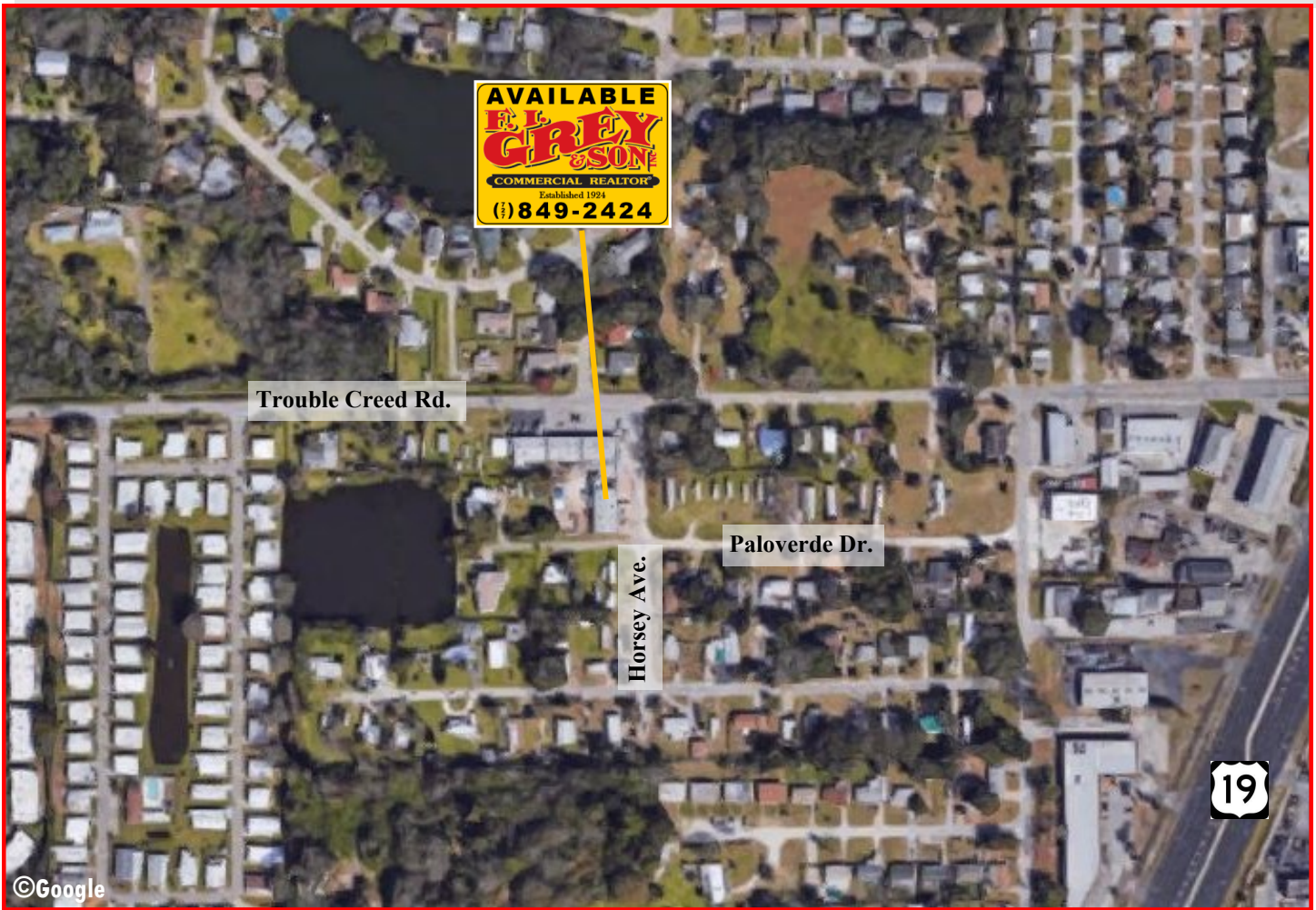


6328 US Hwy. 19  
New Port Richey, FL 34652  
(727) 849-2424  
www.figrey.com



The information given herewith is obtained from sources we consider reliable. We are not responsible for misstatements of facts, errors, omissions, changes in terms or conditions, or withdrawal from the market without prior notice.

**HORSEY AVE & PALOVERDE DR, NEW PORT RICHEY, FL 34652**



DEMOGRAPHICS			
<i>Radius</i>	<i>1-Mile</i>	<i>3-Mile</i>	<i>5-Mile</i>
<b>Population:</b>	<b>11,130</b>	<b>68,268</b>	<b>132,858</b>
<b>Households:</b>	<b>5,170</b>	<b>30,192</b>	<b>57,632</b>
<b>Avg HH Inc:</b>	<b>\$49,177</b>	<b>\$49,740</b>	<b>\$53,585</b>

PROPERTY STATISTICS
<b>Use: Light Manufacturing</b>
<b>Traffic Counts: 2,700 ADTV on Trouble Creek Rd. (FDOT)</b>

**FOR INFORMATION, CONTACT:**

**John R. Grey**  
**John@figrey.com**

**Charles R. Grey**  
**Chuck@figrey.com**

**Office: (727) 849-2424**

*Serving Florida for over 90 years!*



The information given herewith is obtained from sources we consider reliable. We are not responsible for misstatements of facts, errors, omissions, changes in terms or conditions, or withdrawal from the market without prior notice.