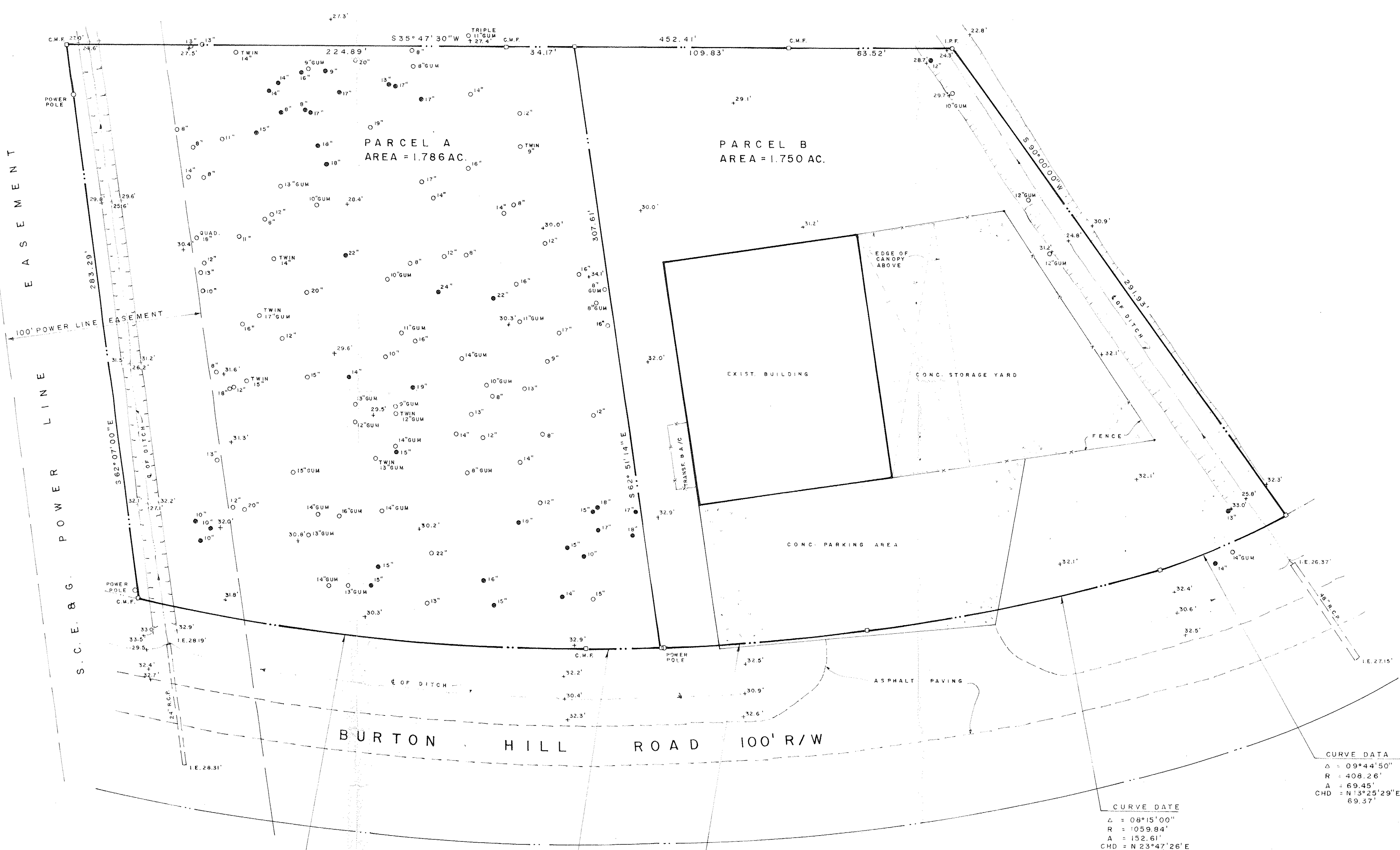


LOCATION MAP



LEGEND  
○ OAK  
● PINE

REFERENCE PLAT  
PLAT PREPARED FOR WILLIAM F. MARSCHER & ADRIENNE K. MARSCHER BY R.D. TROGDON DATED 12-2-77.

I HEREBY CERTIFY THAT THE RATIO OF PRECISION OF THIS FIELD SURVEY IS A MINIMUM OF 1/10,000 AS SHOWN HEREON AND THAT THE AREA WAS DETERMINED BY THE D.M.D. METHOD.

CURVE DATA  
Δ = 09°44'50"  
R = 408.26'  
A = 69.45'  
CHD = N 13°25'29"E  
69.37'

CURVE DATA  
Δ = 08°15'00"  
R = 1059.84'  
A = 152.61'  
CHD = N 23°47'26"E  
152.47'

CURVE DATA  
Δ = 12°26'03"  
R = 1059.84'  
A = 230.01'  
CHD = N 41°52'03"E  
229.55'

CURVE DATA  
Δ = 02°03'29"  
R = 1059.84'  
A = 38.07'  
CHD = N 34°37'16"E  
38.07'

CURVE DATA  
Δ = 05°40'35"  
R = 1059.84'  
A = 105.00'  
CHD = N 30°45'14"E  
104.96'

BENJAMIN WILSON, R.L.S. S.C. 5424



**SIE** SEA ISLAND ENGINEERING, INC.  
P.O. Drawer 1568, HILTON HEAD ISLAND, S.C. 29925  
CONSULTING ENGINEERS    SITE PLANNERS    LAND SURVEYORS

PLAT PREPARED FOR  
**WILLIAM F. MARSCHER**  
BEAUFORT COUNTY, SOUTH CAROLINA

BOUNDARY & TOPOGRAPHIC SURVEY

DATE: 12-6-84

**M-29**

SCALE: 1" = 30'