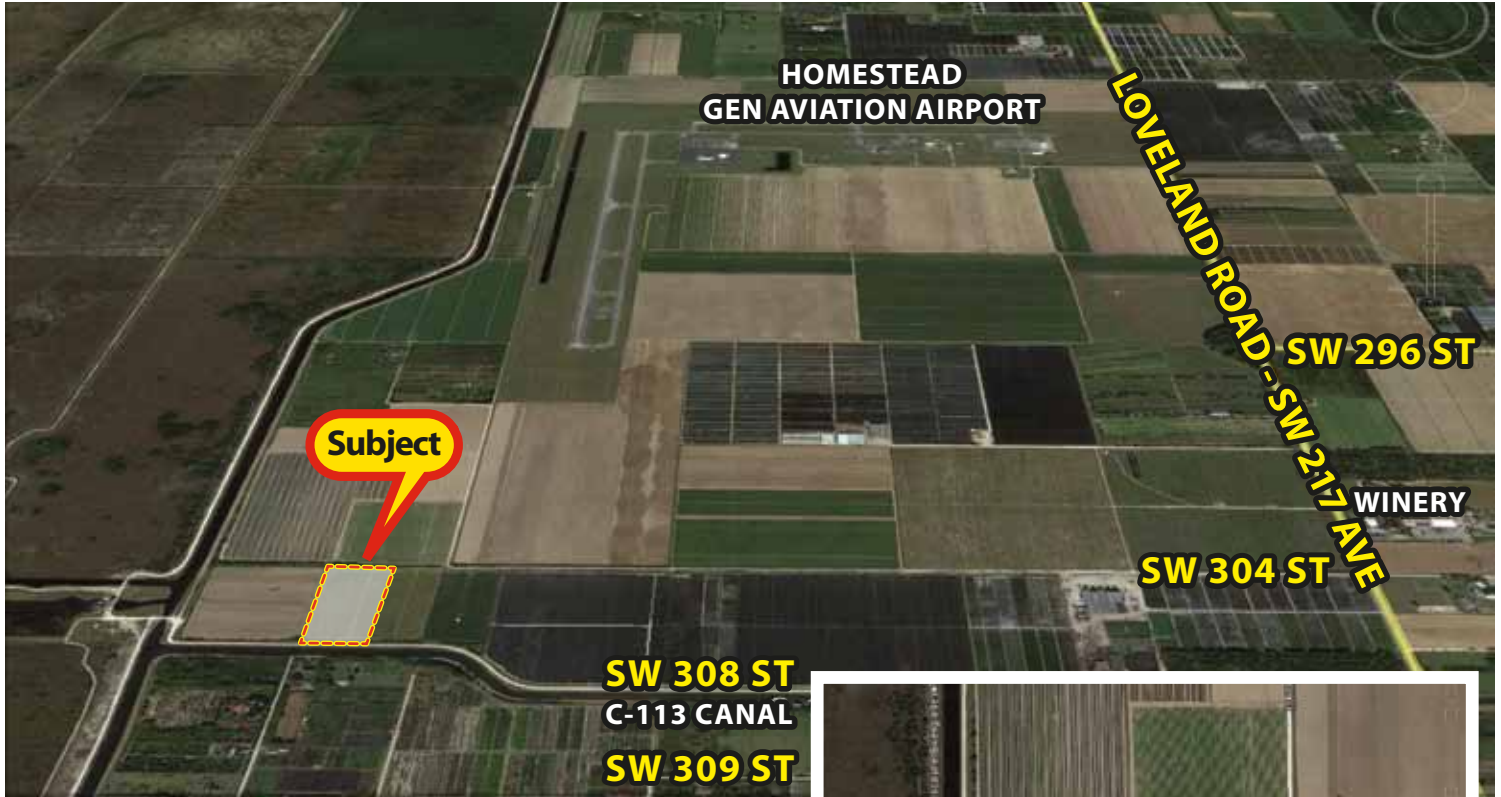


**\*\*\* REDUCED AGAIN \*\*\***  
**5 ACRES - CANALFRONT**

**\*\*\* FARM OR HOMESITE \*\*\***

**22750 SW 304 Street, Homestead, FL 33030 Folio #30-7807-000-0039**



- 1 mile west of Winery.
- 330' x 660', 6.5-7 ft. elevation. Perrine Marl very shallow phase, 4"-12" to bedrock, cleared, electric nearby.
- Previously farmed in vegetables, dirt road access at northern boundary. South boundary frontage on C-113 canal.
- Financing may be available through Farm Credit of Homestead. Jonathan Borghi, 305-248-6080



**\$190,000**



*Rick*

**RICK SWENTEK, P.A., A.L.C.**

**305.453.0109**

**Cell/Text: 305.773.5363**

[rickswen@bellsouth.net](mailto:rickswen@bellsouth.net)



[florida1realtyinc.com](http://florida1realtyinc.com)

103400 Overseas Hwy. Suite 250-D, Key Largo, FL 33037