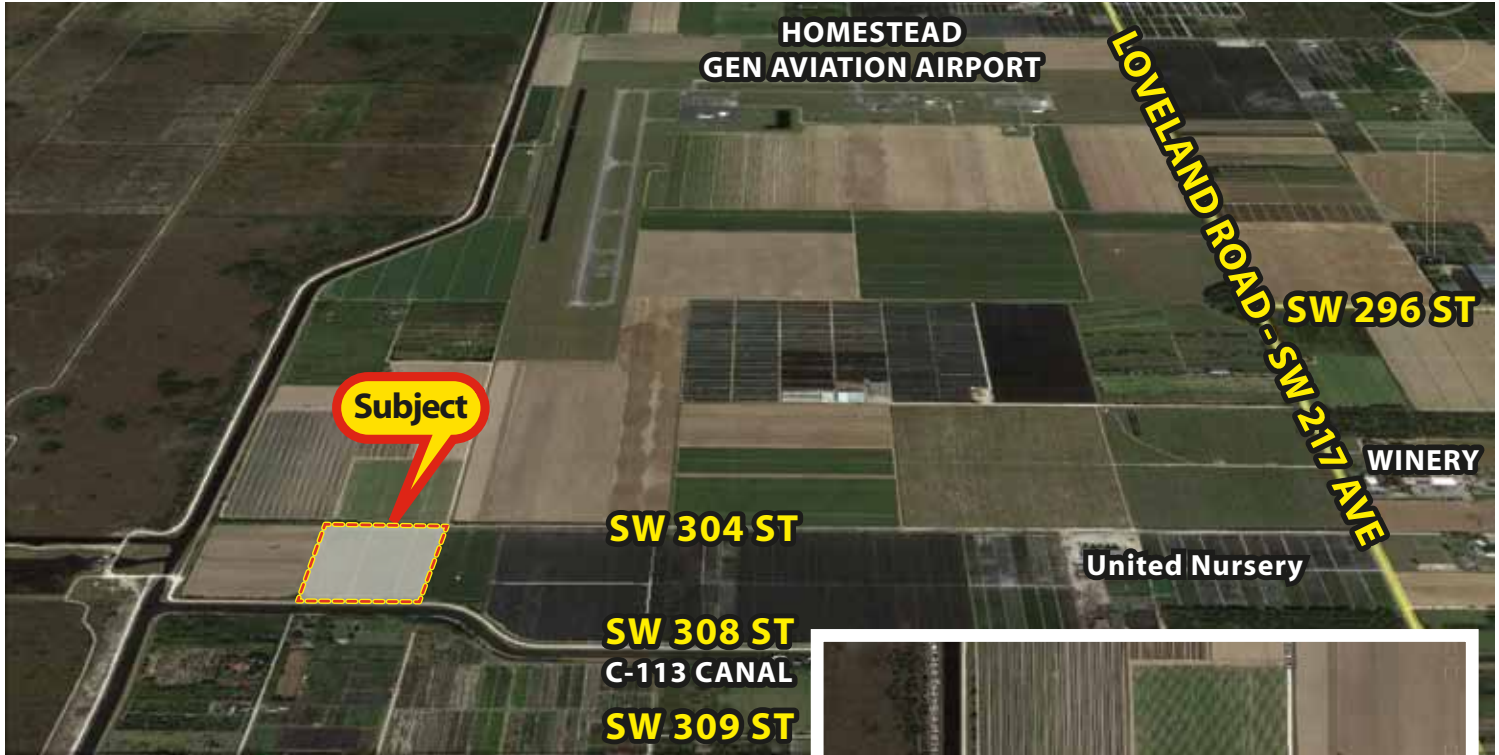


***** REDUCED *****
10 ACRES - CANALFRONT

***** FARM-GROVE-NURSERY-HOMESITE *****

22702 SW 304 Street, Homestead, FL 33030
Folio #30-7807-000-0041 & 30-7807-000-0039



- 1 mile west of Winery.
- 660' x 660', 6.5-7 ft. elevation. Perrine Marl very shallow phase, 4"-12" to bedrock, cleared, electric nearby.
- Previously farmed in vegetables, dirt road access at northern boundary. South boundary frontage on C-113 canal.
- Adjacent 10 acres available.
- \$247,000 down, \$133,000 PMM @ 6%, 20-year amortization, \$952.85 per month, balloon end of year #5.



\$380,000



Rick

RICK SWENTEK, P.A., A.L.C.

305.453.0109

Cell/Text: 305.773.5363

rickswen@bellsouth.net



florida1realtyinc.com

103400 Overseas Hwy. Suite 250-D, Key Largo, FL 33037