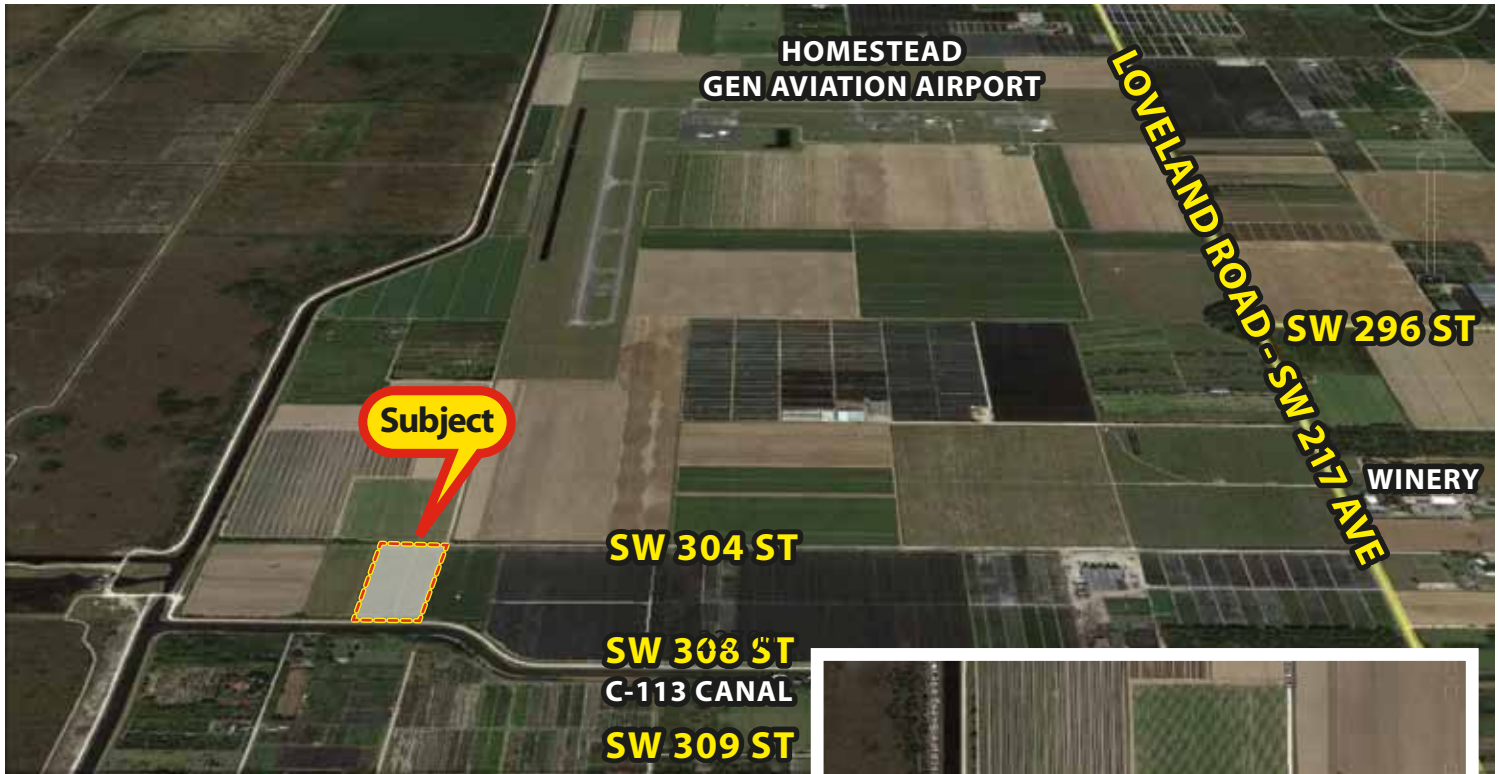


**\*\*\* REDUCED \*\*\***  
**5 ACRES - CANALFRONT**

**\*\*\* FARM-GROVE-NURSERY-HOMESITE \*\*\***

**22700 SW 304 Street, Homestead, FL 33030 Folio #30-7807-000-0041**



- 1 mile west of Winery.
- 330' x 660', 6.5-7 ft. elevation. Perrine Marl very shallow phase, 4"-12" to bedrock, cleared, electric nearby.
- Previously farmed in vegetables, dirt road access at northern boundary. South boundary frontage on C-113 canal.
- Adjacent 5 acres available.
- \$57,000 down, \$133,000 PMM @ 6%, 20-year amortization, \$952.85 per month, balloon end of year #5.



**\$190,000**



*Rick*

**RICK SWENTEK, P.A., A.L.C.**

**305.453.0109**

**Cell/Text: 305.773.5363**

[rickswen@bellsouth.net](mailto:rickswen@bellsouth.net)



[florida1realtyinc.com](http://florida1realtyinc.com)

103400 Overseas Hwy. Suite 250-D, Key Largo, FL 33037