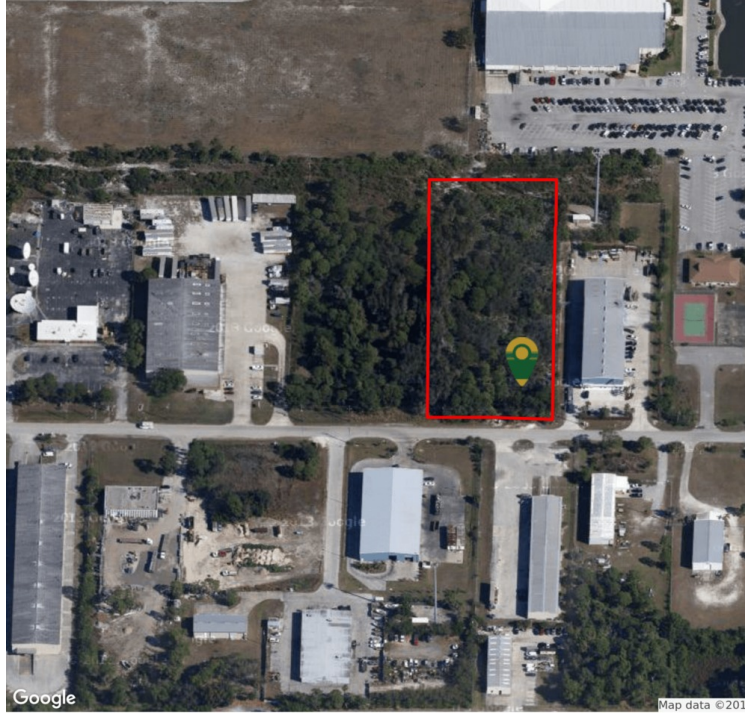


KIRBY CIRCLE INDUSTRIAL LAND FOR SALE

Kirby Circle, N.E., Palm Bay, FL 32905

VACANT LAND - EXCELLENT LOCATION!



OFFERING SUMMARY

Sale Price: \$229,000

Acreage: 2.97 Acres

Zoning: LI Light Industrial

Market: Kirby Industrial Park

PROPERTY OVERVIEW

Excellent location for light industrial business in the Kirby Circle Industrial area, within the Enterprise Zone of Palm Bay which may provide various tax credit incentives for business development.

Dimensions 180+/- Ft on the Northern and Southern Boundaries, 639+/- Sf on the Eastern and Western Boundaries.

LOCATION OVERVIEW

Located west of US Highway 1 and East of Robert J. Conlan Blvd. in the industrial area of Palm Bay. Easy access to local businesses, shopping via US Hwy 1, Palm Bay Road, I-95. Nearby businesses include UPS, Harris Corporation and Intersil Orlando-Melbourne International Airport and the beaches are just minutes away, as well as numerous residential and business areas.



Individual Members
Michael S. Ullian
Adam Rathbun

Michael S. Ullian, President, CCIM, SIOR

Licensed Real Estate Broker

Cell: 321.258.7556

mike@ullianrealty.com



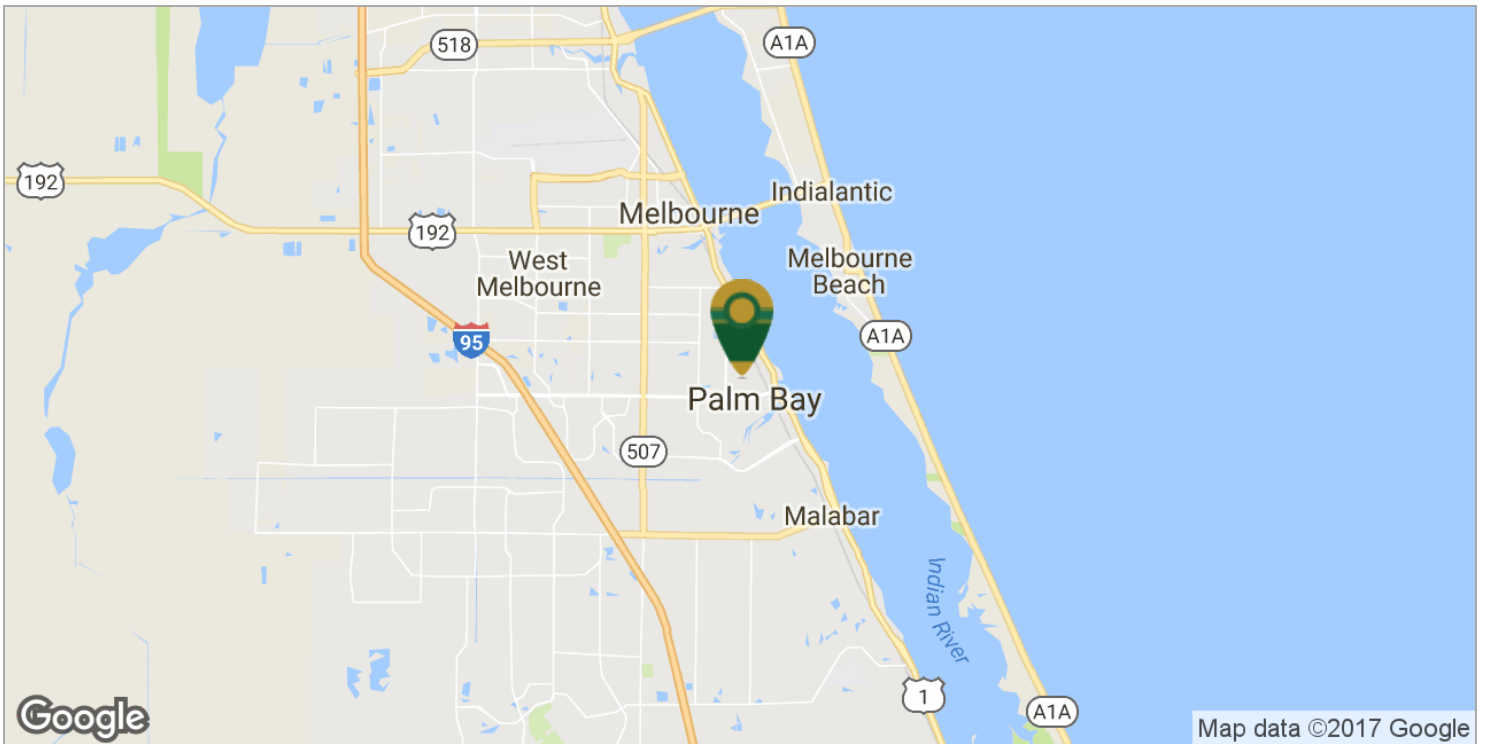
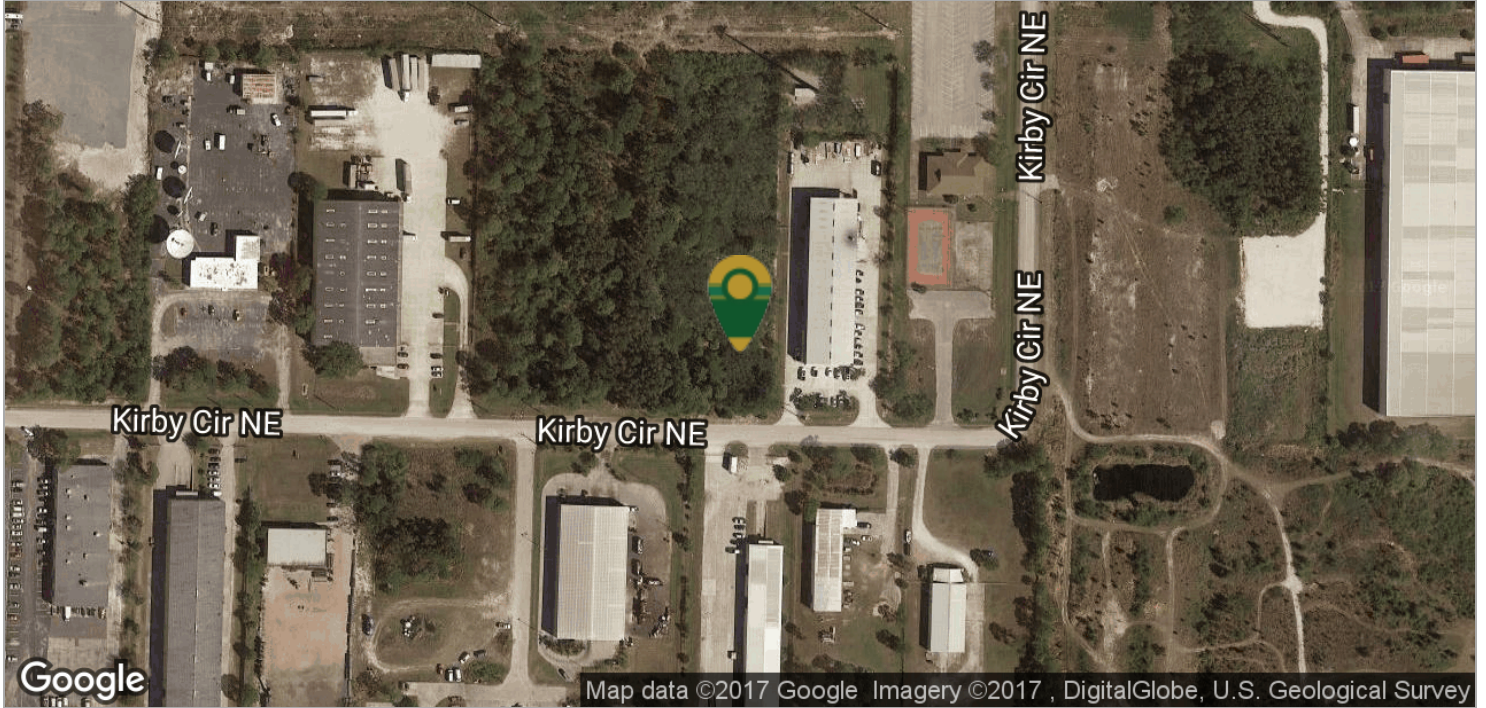
SIOR

Individual Member
Michael S. Ullian

KIRBY CIRCLE INDUSTRIAL LAND FOR SALE

Kirby Circle, N.E., Palm Bay, FL 32905

Location Maps



Michael S. Ullian, President, CCIM, SIOR

Licensed Real Estate Broker

Cell: 321.258.7556

mike@ullianrealty.com



SIOR

Individual Member
Michael S. Ullian