

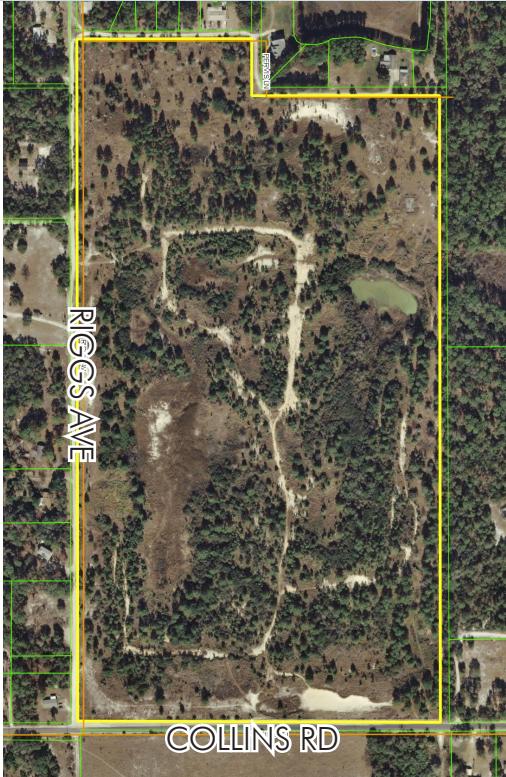
POTENTIAL SF DEVELOPMENT IN DELTONA

69± acres

Deltona, Volusia County, FL

SOLD!

POTENTIAL SINGLE FAMILY
RESIDENTIAL DEVELOPMENT
LAND FOR SALE



LOCATION/DESCRIPTION

Located on Collins Road, just west of Hwy 415 within the city limits of Deltona, FL. Within close proximity to major cities and roadways: 45 min. from downtown Orlando, 30 min. from New Smyrna Beach, and approximately 15 min. from the Orlando-Sanford International Airport. The property is surrounded by residential developments with major retail located close by, including a Walmart Super Center. More growth is expected for this area with the expansion of Hwy 415, a major arterial corridor servicing the area. The project, set for fall of 2015, will expand the roadway to four lanes.

SIZE

69± acres

PRICE

PRICE REDUCED! WAS \$690,000
NOW \$586,500 or \$8,500/acre

ZONING/FUTURE LAND USE

RE1 (Residential Estate 1)/Low Density Residential (1du/ac)

ROAD FRONTAGE

1,281'± on Collins Road

UTILITIES

City of Deltona (on Doyle Road, not on site)

PARCEL ID

01-19-31-00-00-0050

Offering subject to errors, omission, prior sale or withdrawal without notice.



— Commercial Real Estate Investments | Management | Brokerage | Development | Land

Maury L. Carter & Associates, Inc.
407-422-3144 | www.maurycarter.com



POTENTIAL SF DEVELOPMENT IN DELTONA

69± acres

Deltona, Volusia County, FL

SOLD!



PROPERTY MAP

— Commercial Real Estate Investments | Management | Brokerage | Development | Land

Maury L. Carter & Associates, Inc.
407-422-3144 | www.maurycarter.com

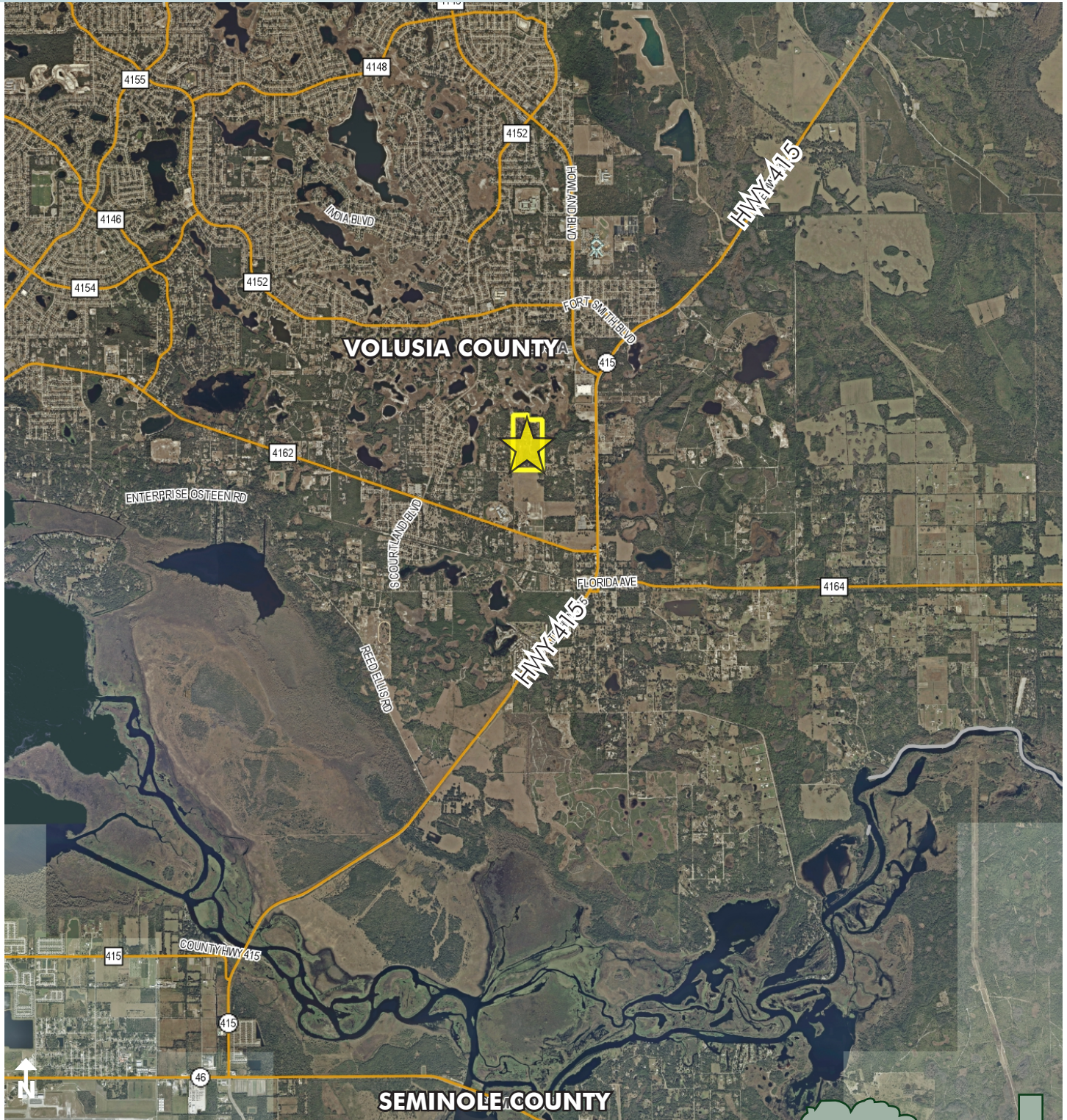


POTENTIAL SF DEVELOPMENT IN DELTONA

69± acres

Deltona, Volusia County, FL

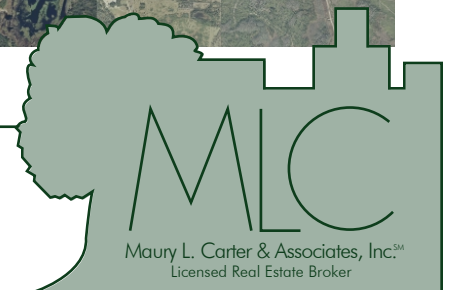
SOLD!



REGIONAL MAP

— Commercial Real Estate Investments | Management | Brokerage | Development | Land

Maury L. Carter & Associates, Inc.
407-422-3144 | www.maurycarter.com

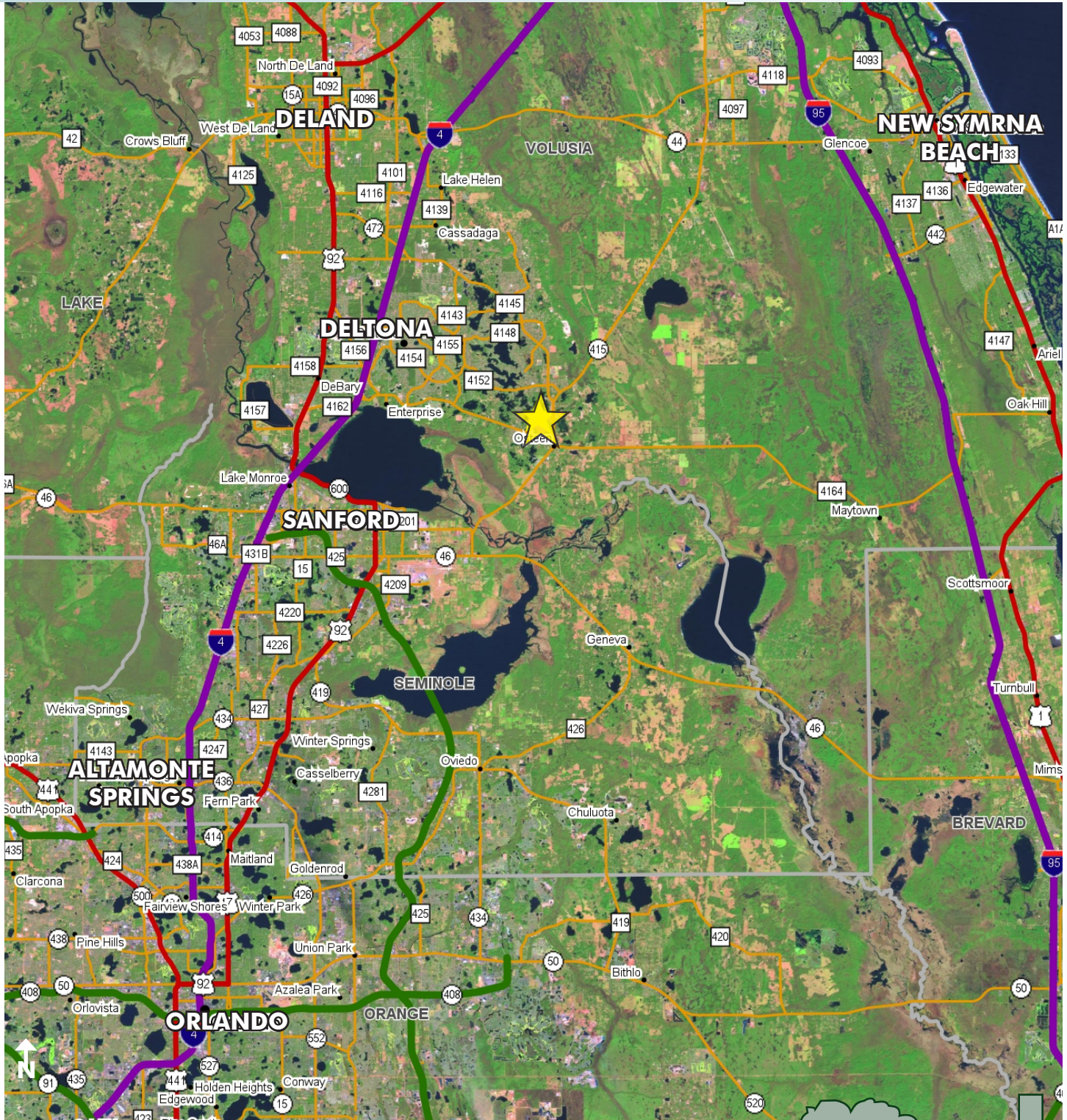


POTENTIAL SF DEVELOPMENT IN DELTONA

69± acres

Deltona, Volusia County, FL

SOLD!



LOCATION MAP

— Commercial Real Estate Investments | Management | Brokerage | Development | Land

Maury L. Carter & Associates, Inc.
407-422-3144 | www.maurycarter.com

