

Consensus Realty Solutions, Inc.

Licensed Real Estate Broker

Alan Trauger – Broker / President

alan@consensusrealtysolutions.com

www.consensusrealtysolutions.com

407-834-7714

LAKEFRONT DEVELOPMENT SITE

BUILD YOUR ESTATE HOME OR DEVELOP SUBDIVISION

5.645 +/- Acres with approximately 245 lf +/- frontage on Silver Lake, a 35.8 acre lake with an average depth of 17 ft.

Located on Ohio Ave in Sanford, Fl. 32773, Approximately ¼ mile south of Onoro St. and 1/3 mile north of East Lake Mary Blvd. Close proximity to SR 417 (approx. 1 2/3 mile)

Unique property that could be utilized as a gated Estate Home complete with boat dock, tennis courts, swimming pool. OR Developed into a subdivision enclave.

Current Zoning – R1AA Seminole County

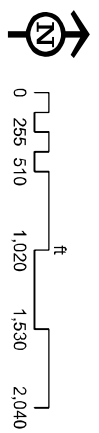
Future Land Use – Low Density Residential (LDR) – max. 4 DU/ Acre – Seminole County

Located in High Growth Area. Located near Sanford Orlando International Airport, Seminole County Sports Complex, Shopping, Malls, Job Centers, Access to Major Road Arteries.

ASKING PRICE \$550,000

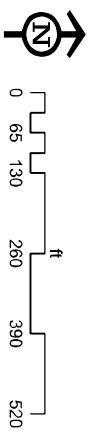


This map is for informational purposes only and is not prepared for or be suitable for legal, engineering or surveying purposes. No warranties, expressed or implied, are provided for the data herein, it's use or interpretation.



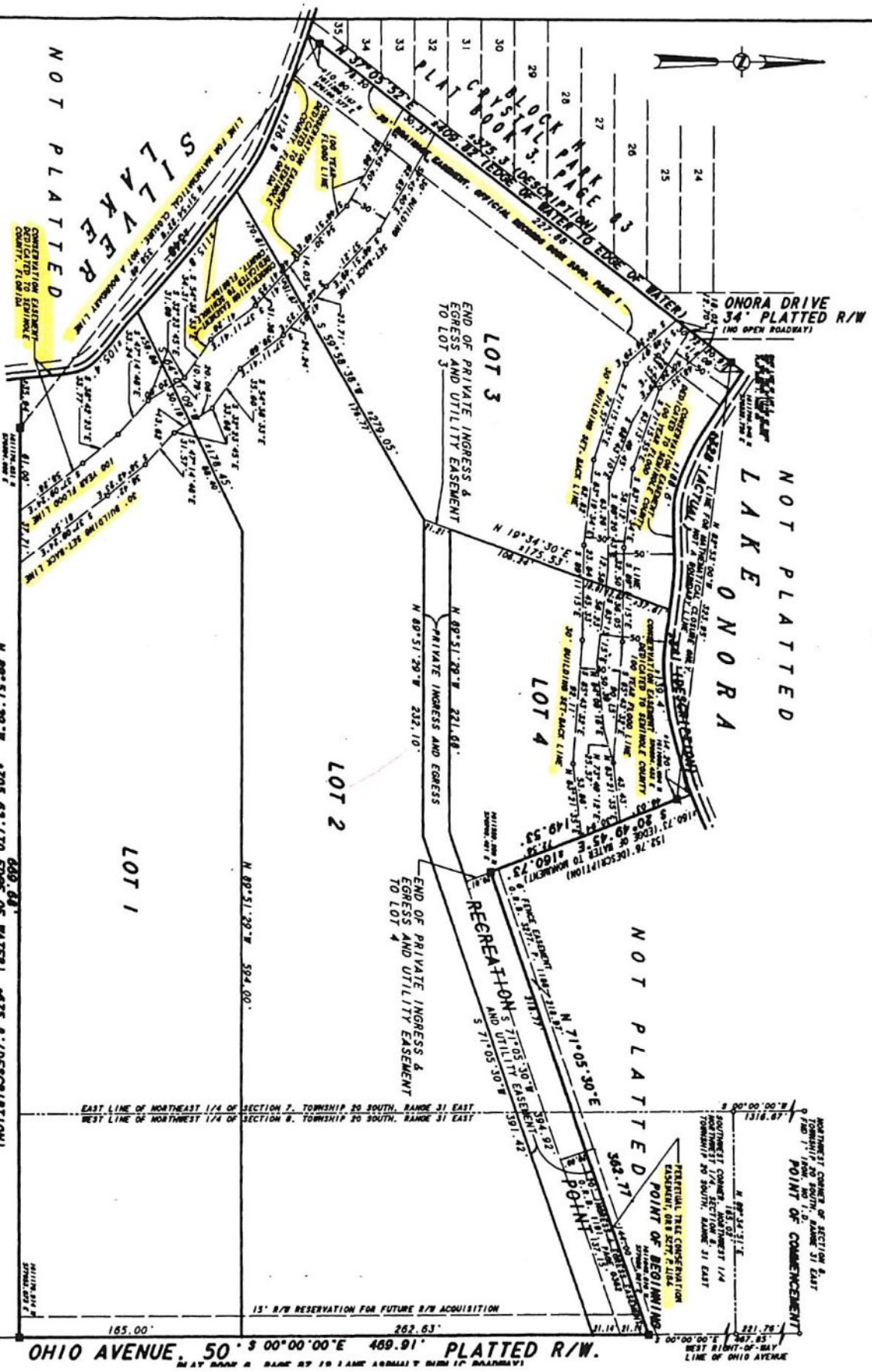


This map is for informational purposes only and is not prepared for or be suitable for legal, engineering or surveying purposes. No warranties, expressed or implied, are provided for the data herein, it's use or interpretation.



EAST COVE AT SILVER LAKE

SECTIONS 7 AND 8, TOWNSHIP 20 SOUTH, RANGE 31 EAST
SEMINOLE COUNTY, FLORIDA



NOTICE: THIS PLAT, AS RECORDED IN ITS GRAPHICAL FORM, IS THE OFFICIAL DEFINITION OF THE SUBDIVIDED LANDS DESCRIBED HEREIN AND WILL IN NO CIRCUMSTANCES BE SUPPLANTED IN AUTHORITY BY ANY OTHER GRAPHIC OR DIGITAL FORM OF THE PLAT. THERE MAY BE ADDITIONAL RESTRICTIONS THAT ARE NOT RECORDED ON THIS PLAT THAT MAY BE FOUND IN THE PUBLIC RECORDS OF THIS COUNTY.



