

# 4 BUILDABLE LOTS IN BELL, FLORIDA

24.08± acres • Gilchrist County, FL

**SOLD!**

LAND FOR SALE



## LOCATION

Bell, Gilchrist County, Florida.

## SIZE

24.08± acres

## PRICE

\$3,333/acre or \$80,000

## ZONING

AG

## PARCEL ID

32-08-14-0083-0000-0050

32-08-14-0083-0000-0040

32-08-14-0083-0000-0030

32-08-14-0083-0000-0060

## DESCRIPTION

This property contains 24± pristine acres located a half mile east of the Suwannee River in Gilchrist County, FL. The subject property consists of a total of four buildable lots. There is an abundant amount of game and wildlife on site, making it perfect for hunters and outdoor enthusiasts. This property is a untouched, blank canvas for a home, estate or weekend get-a-way.

Offering subject to errors, omission, prior sale or withdrawal without notice.

— Commercial Real Estate Investments | Management | Brokerage | Development | Land —

Maury L. Carter & Associates, Inc.  
407-422-3144 | [www.maurycarter.com](http://www.maurycarter.com)



# 4 BUILDABLE LOTS IN BELL, FLORIDA

24.08± acres • Gilchrist County, FL

**SOLD!**



PROPERTY MAP

— Commercial Real Estate Investments | Management | Brokerage | Development | Land

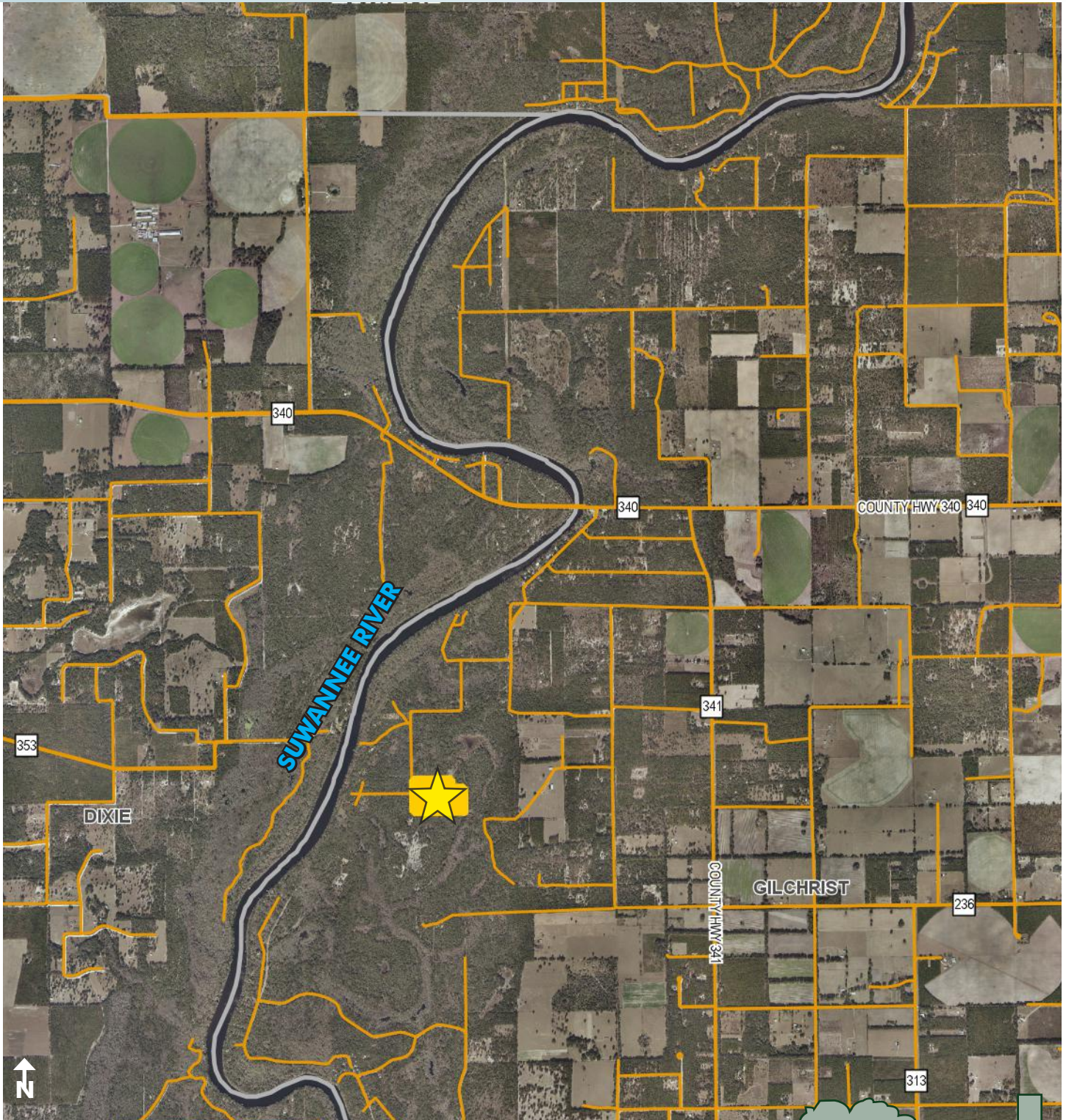
Maury L. Carter & Associates, Inc.  
407-422-3144 | [www.maurycarter.com](http://www.maurycarter.com)



# 4 BUILDABLE LOTS IN BELL, FLORIDA

24.08± acres • Gilchrist County, FL

**SOLD!**



REGIONAL MAP

— Commercial Real Estate Investments | Management | Brokerage | Development | Land

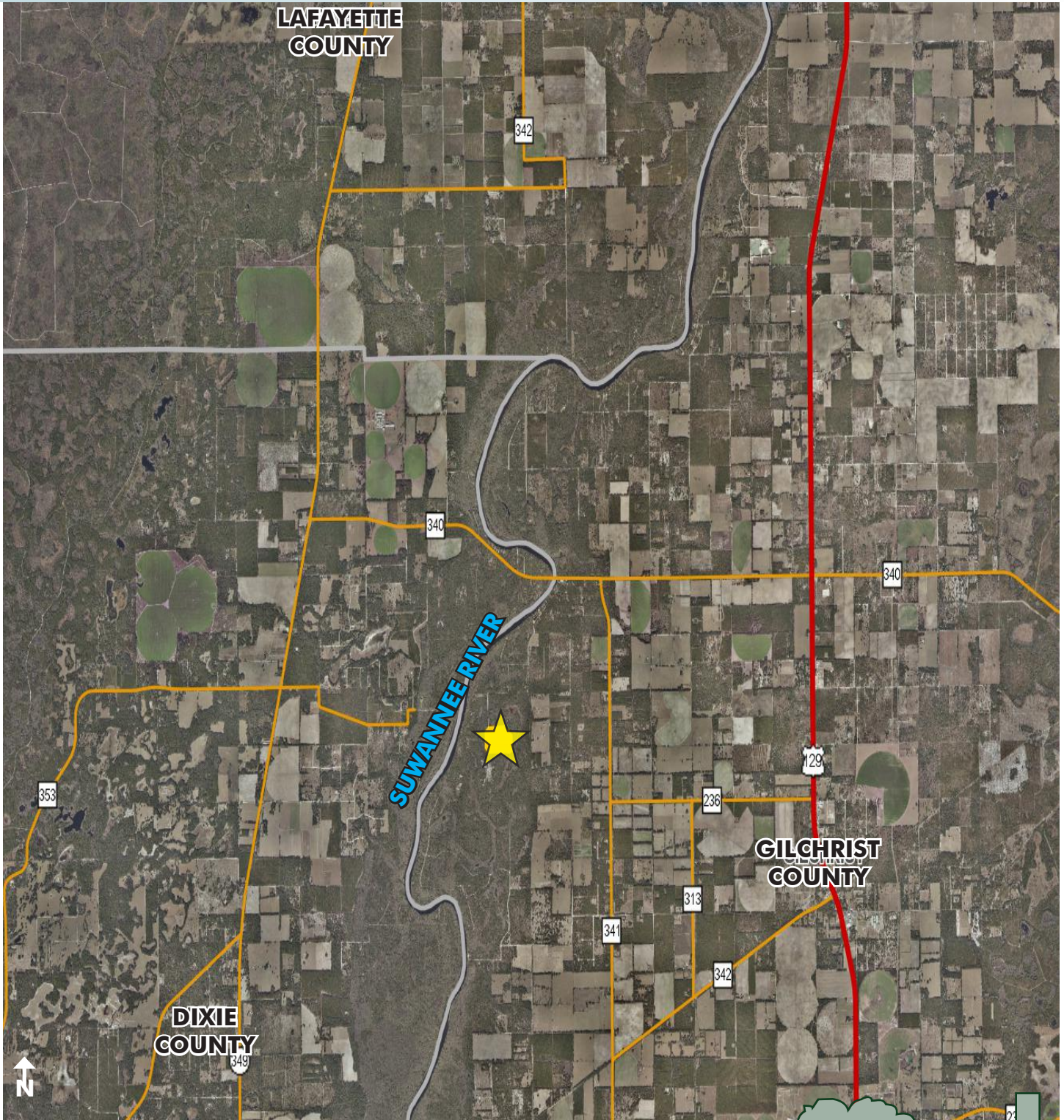
Maury L. Carter & Associates, Inc.  
407-422-3144 | [www.maurycarter.com](http://www.maurycarter.com)



# 4 BUILDABLE LOTS IN BELL, FLORIDA

24.08± acres • Gilchrist County, FL

**SOLD!**



LOCATION MAP

— Commercial Real Estate Investments | Management | Brokerage | Development | Land

Maury L. Carter & Associates, Inc.  
407-422-3144 | [www.maurycarter.com](http://www.maurycarter.com)



# 4 BUILDABLE LOTS IN BELL, FLORIDA

24.08± acres • Gilchrist County, FL

**SOLD!**



— Commercial Real Estate Investments | Management | Brokerage | Development | Land

Maury L. Carter & Associates, Inc.  
407-422-3144 | [www.maurycarter.com](http://www.maurycarter.com)

