



# COMMERCIAL ASSET PARTNERS

Sales & Leasing • Investment • Property Management • Site Selection

LAND FOR SALE



- ◆ Beautiful partially forested 11.28 acre uplands parcel, perfect for a nice upscale 11 unit subdivision
- ◆ Also suitable for a small church, daycare, or cell phone tower site
- ◆ Surrounded by 2 churches, cemetery, pasture land and undeveloped AS-1 zoning to the south
- ◆ 146 feet of frontage along Amanda Park Drive



- ◆ 800 ft south of County Line Rd., 5 minutes to Tampa Premium Outlets and I-75, 12 minutes to Wiregrass Mall



## Development Opportunity

Amanda Park Drive  
Lutz, FL 33559

**Sale Price:**  
**\$399,000**



**Shane Billings**  
Commercial Associate

Cell: (813) 995-1592  
sbillings@cap-realty.com



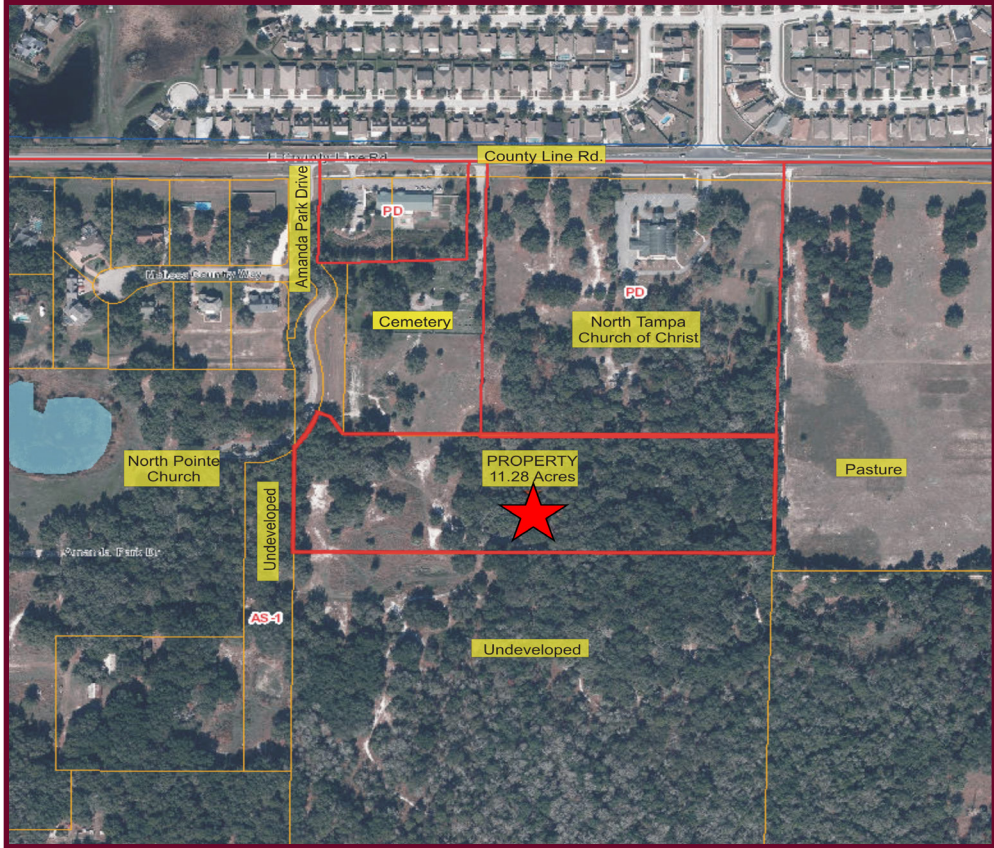
2511 Seven Springs Blvd.  
Trinity, FL 34655  
Office: (727) 376-4900  
Fax: (727) 376-4944  
[www.cap-realty.com](http://www.cap-realty.com)

This information is believed to be accurate. Broker is not responsible for misstatements of fact, errors or omissions, prior sale, change of price, terms or withdrawal from market without notice. Buyer and/or tenants shall verify all information

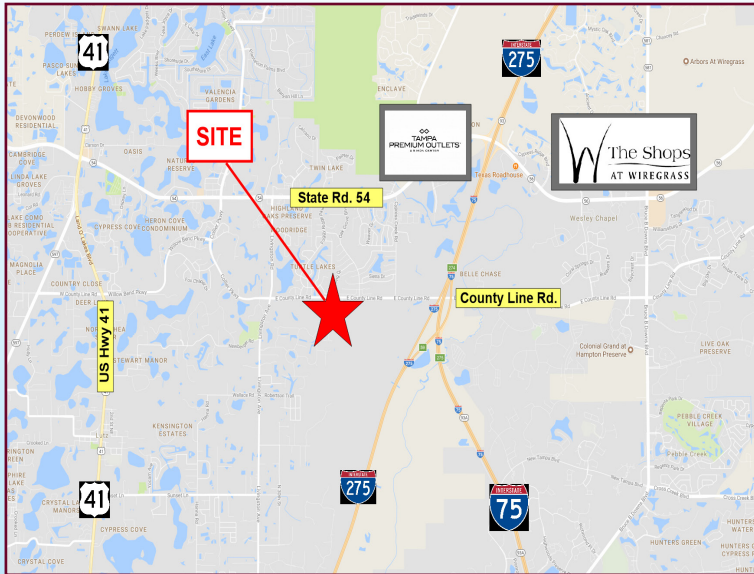


11.28 Acres

PROPERTY INFORMATION



Aerial Map



Location Map

