

OWNER/USER OFFICE BUILDING

9,205± SF OFFICE BUILDING FOR SALE / LEASE



900 S. GOLDENROD ROAD, ORLANDO, FL 32822

PROPERTY FEATURES

- 9,205± SF of Nicely Appointed Professional Office / Former Medical Space
- Four (4) Demised Suites
- Florida Hospital East Campus One (1) Mile Away
- Great Access to SR 408, SR 417 and Interstate 4
- Parking Ratio: 4.5/1,000 SF
- Constructed in 2000
- Also Available for Lease
- Asking Price: \$1,575,000
- Lease Rate: \$19.50 PSF (Net of Electric and Janitorial)

SUITES	RSF
Suite A	1,000±
Suite B	4,152±
Suite C	2,653±
Suite D	1,400±
TOTAL	9,205±

CONTACT:

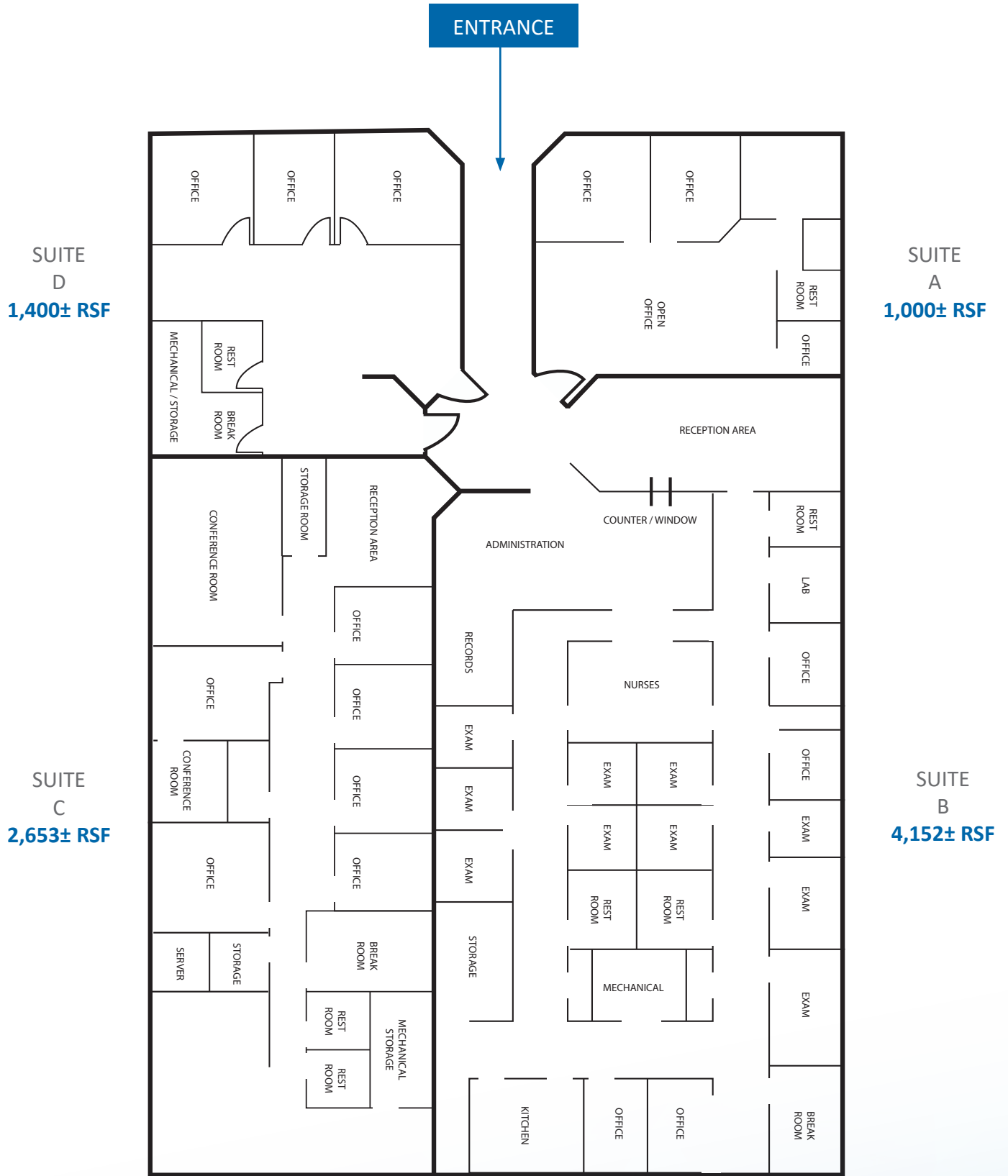
DARRYL DOTHEROW, CCIM
Senior Vice President, Ext. 114
drdotherow@realtycapitalfl.com



605 E. Robinson St., Suite 500 • Orlando, FL 32801
P 407.843.7070 • F 407.843.2070 • realtycapitalfl.com

No warranty or representation, express or implied, is made as to the accuracy of the information contained herein, and same is submitted subject to errors, omissions, change of price, rental or other conditions, withdrawal without notice, and to any special listing conditions imposed by our principals.

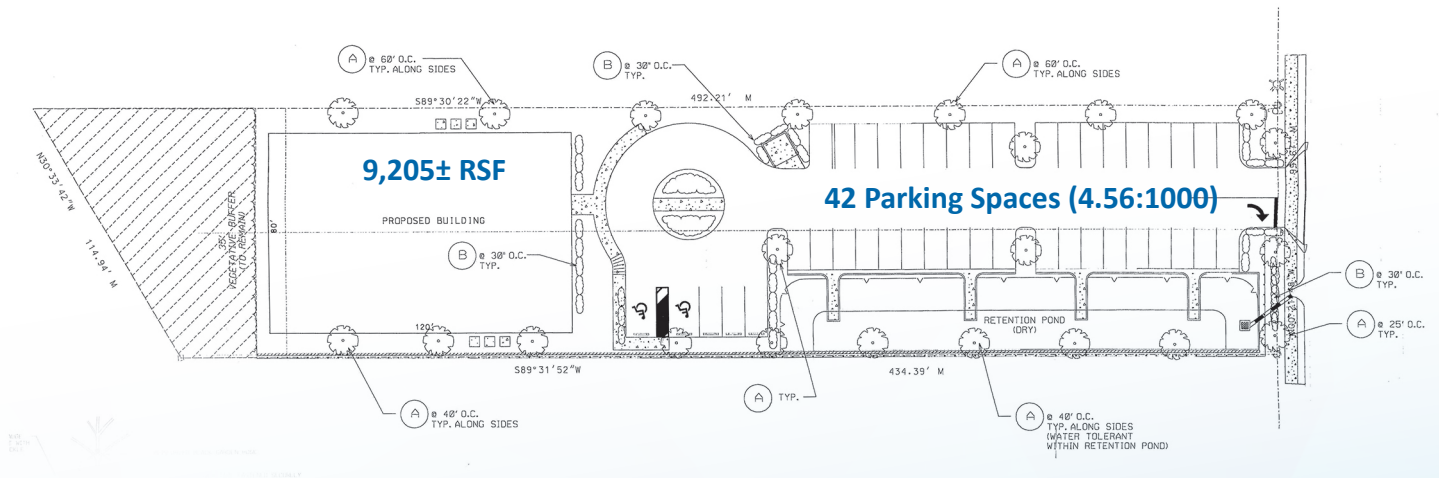
FLOOR PLAN



PHOTOS



SITE PLAN



605 E. Robinson St., Suite 500 • Orlando, FL 32801 • P 407.843.7070 • F 407.843.2070

realtycapitalfl.com

No warranty or representation, express or implied, is made as to the accuracy of the information contained herein, and same is submitted subject to errors, omissions, change of price, rental or other conditions, withdrawal without notice, and to any special listing conditions imposed by our principals.

LOCATOR MAP



2017 DEMOGRAPHICS

2017 Demographics	1 Mile	3 Miles	5 Miles
Population	13,302	121,352	296,295
Average Household Income	\$55,625	\$55,400	\$67,030
Median Household Income	\$42,657	\$41,177	\$47,274
Median Age	35.6	35.6	35.3