



COMMERCIAL

FOR SALE
1727 Benbow Court
Apopka, FL 32703



Lee Zerivitz, CCIM
Managing Partner
Office: 407.644.CITY (2489)
Cell: 407.929.3598

lee@citycommercial.com

CITY COMMERCIAL
1071 W. Morse Boulevard
Suite 101
Winter Park, FL 32789

www.CITYcommercial.com



Property Highlights

Summary

- \pm 10,647 SF
- \pm 1.95 acres
- Free standing office/warehouse building - first time ever on market
- Perfect for owner/user
- IND-2/IND-3 zoning - Uninc Orange County
- Parcel ID: [24-21-28-5986-00-020](#)

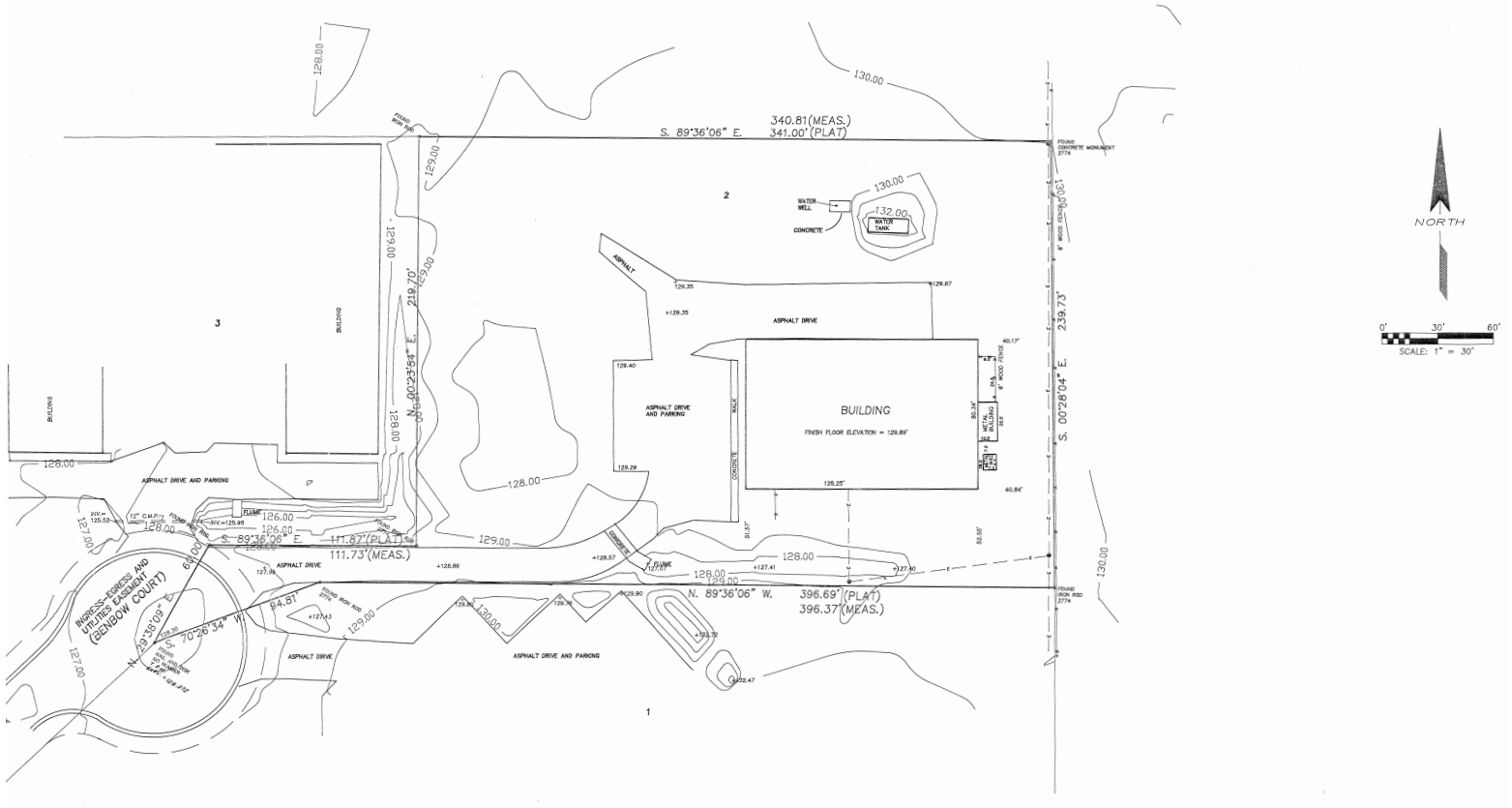
Features

- Secluded warehouse property not visible from main road
- 3 phase power
- 14-16' clear
- \pm 1,700 SF of office

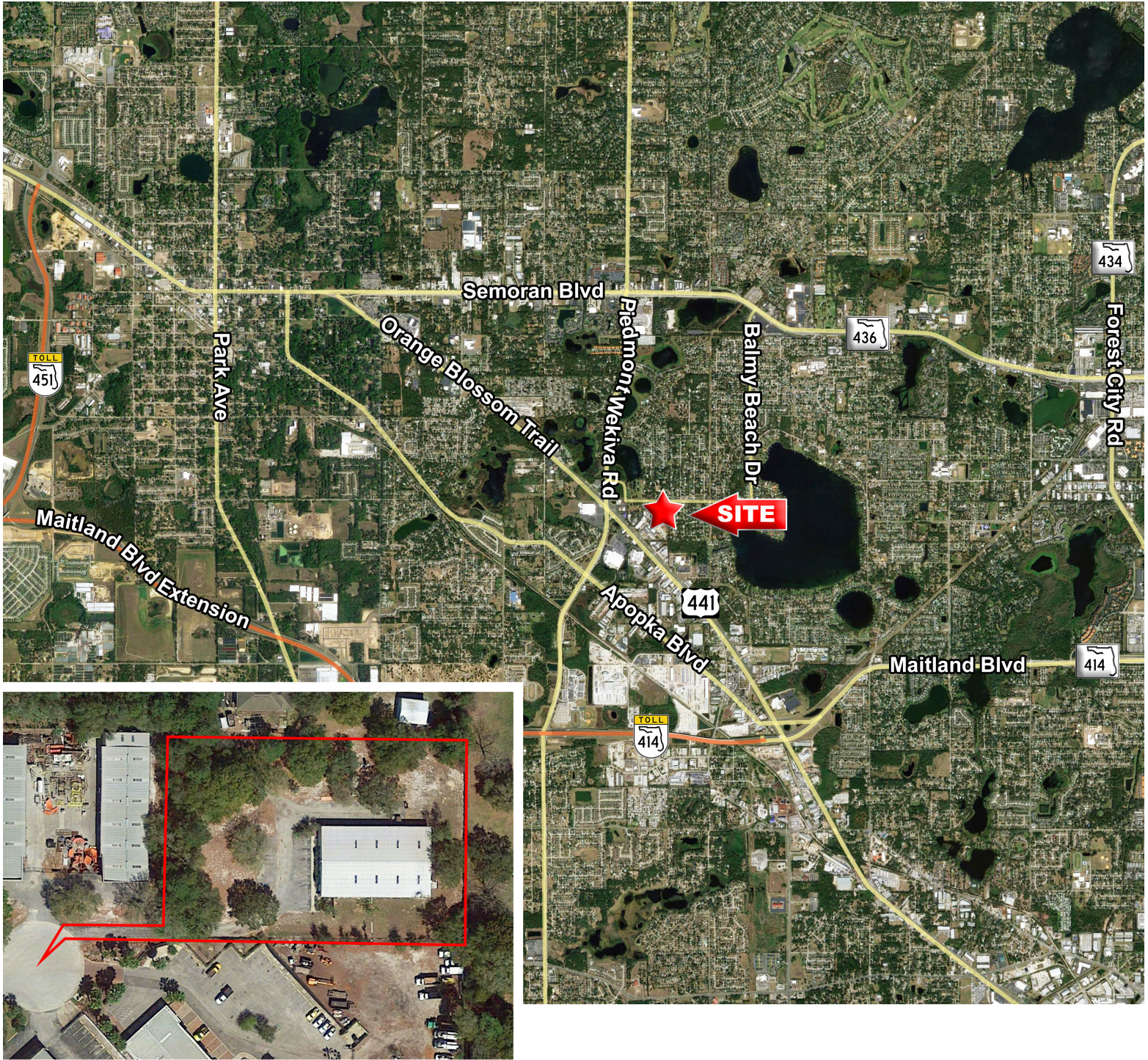
Survey

SURVEY NOTES:

- 1. ELEVATIONS SHOWN ARE BASED ON ORANGE COUNTY DATUM, BENCH MARK G-225-005, A 60 P NAIL IN THE SOUTH SIDE OF POWER POLE #R100C-7503, ON THE NORTH SIDE OF HIGHWAY 441, WEST OF FIDMONT-KEKUA INTERSECTION. ELEVATION = 86.687'
- 2. BEARINGS ARE BASED ON THE RECORDED PLAT WITH THE NORTH LINE OF LOT 2 BEING S. 89°36'06"E
- 3. NO TITLE OPINION OR ABSTRACT OF MATTERS AFFECTING TITLE OR BOUNDARY TO THE SUBJECT PROPERTY HAVE PROVIDED. IT IS POSSIBLE THERE ARE DEEDS OF RECORD, UNRECORDED DEEDS OR OTHER INSTRUMENTS WHICH COULD AFFECT THE BOUNDARIES.
- 4. NO UTILITY LINES UNCOVERED THIS DATE. ALL UNDERGROUND UTILITY LOCATIONS SHOWN HEREON ARE APPROXIMATE AND WERE DETERMINED FROM SURFACE FEATURES INDICATING UNDERGROUND LINES SUCH AS MANHOLES, VALVES, CATCH BASINS, WATER METERS, ECT. AND INFORMATION PROVIDED BY UTILITY COMPANIES.



Market Aerial



CITY Commercial is the agent of the Landlord or Seller of this property and will be paid by the Landlord or Seller. All information furnished with respect to the subject property has been obtained from sources deemed reliable. No representation as to accuracy thereof is made. This offering is subject to errors, omissions, prior sales or withdrawal without notice.

Lee Zerivitz, CCIM
Managing Partner
Office: 407.644.CITY (2489)
Cell: 407.929.3598

CITY COMMERCIAL
1071 W. Morse Boulevard
Suite 101
Winter Park, FL 32789

lee@citycommercial.com

www.CITYcommercial.com