

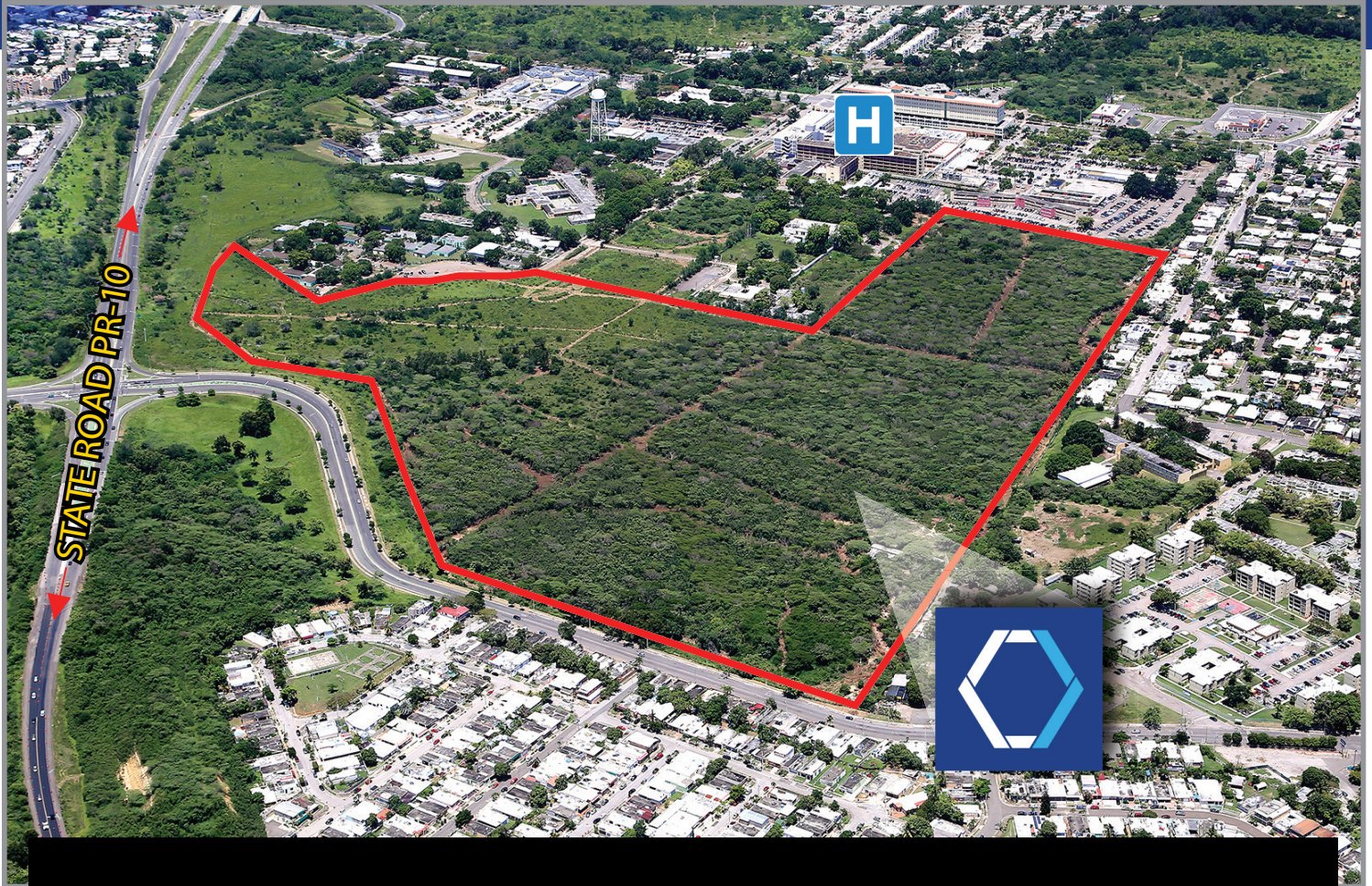


CHRISTIANSEN
COMMERCIAL REAL ESTATE

License 134

Ponce, Puerto Rico

DEVELOPMENT SITE FOR SALE



DESCRIPTION:

Development site consisting of a combined total approximately **87.34 cuerdas**, equivalent to 343,277.71 square meters, separated into two (2) parcels and located adjacent to the San Lucas Hospital in Ponce.

LOCATION:

Intersection of State Road PR-10 & Emilio Fagot Avenue, Machuelos Ward, Ponce, Puerto Rico

ZONING:

EV.4 - Allows for residential, commercial, insitutional and light industrial uses

SITE AREA:

Parcel A: **67.47 cuerdas**, equivalent to 265,168.76 square meters

Parcel B: **19.87 cuerdas**, equivalent to 78,108.95 square meters

TOTAL: **87.34 cuerdas**, equivalent to 343,277.71 square meters

LOCATION INFLUENCE:

Located off of State Road PR-10 in Ponce, adjacent to the San Lucas Hospital.

In the immediate vicinity of many residential, commercial and institutional uses, including residential developments, stores, restaurants, fast food establishments, hospital, retail centers and office buildings, among many others.

SITE COORDINATES:

Latitude: 18°02'02.96"N, Longitude: -66°35'55.85"W

TAX CODE ID (CRIM):

365-000-008-69-901

For more information: WWW.CHRISTIANSENCOMMERCIAL.COM

