



**CITY COMMERCIAL**

**OFFICE CONDO FOR SALE**  
**331 Maitland Avenue**  
**Maitland, FL 32751**

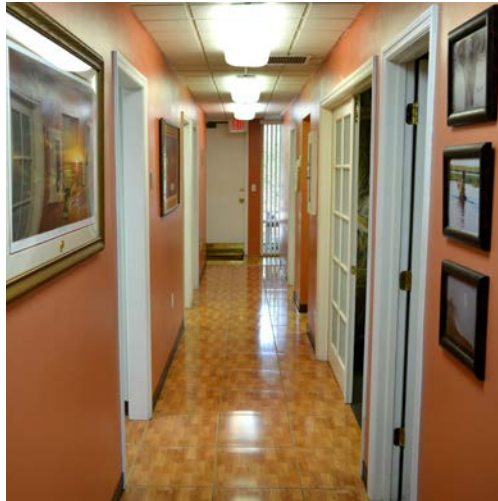


**Lee Zerivitz, CCIM**  
Managing Partner  
Office: 407.644.CITY (2489)  
Cell: 407.929.3598

[lee@citycommercial.com](mailto:lee@citycommercial.com)

**CITY COMMERCIAL**  
1071 W. Morse Boulevard  
Suite 101  
Winter Park, FL 32789

[www.CITYcommercial.com](http://www.CITYcommercial.com)



## Property Highlights

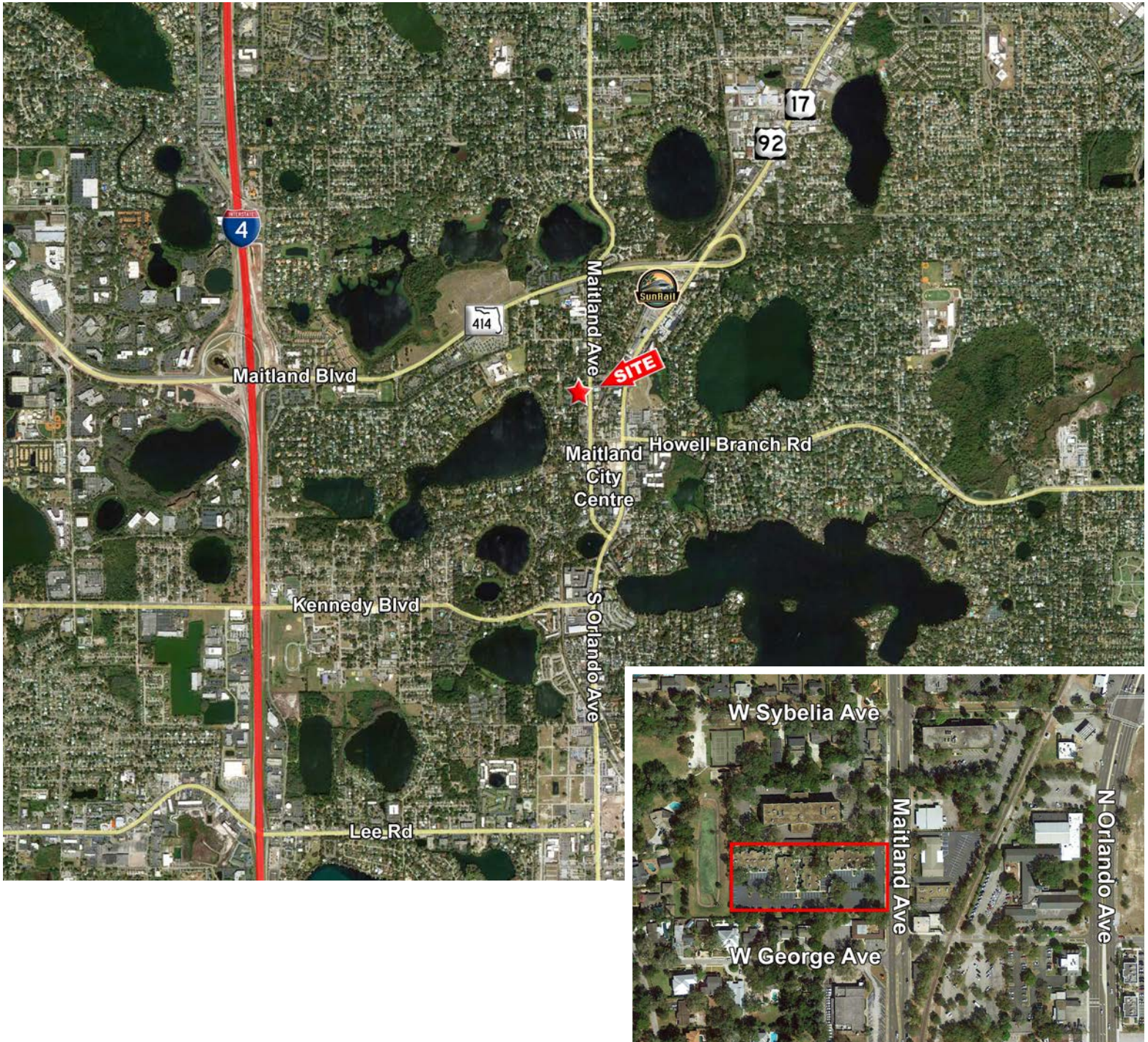
### Summary

- Unit D-2: ± 1,113 SF
- Full dental / medical buildout
- Prime Maitland location
- Well established office park
- Ample parking and monument sign

### Features

- First floor space
- Currently Endodontist space
- FF&E available
- 3-4 exam rooms with water
- Lab & breakroom
- Private physician office with restroom
- Attractive waiting area

**Market Aerial**



CITY Commercial is the agent of the Landlord or Seller of this property and will be paid by the Landlord or Seller. All information furnished with respect to the subject property has been obtained from sources deemed reliable. No representation as to accuracy thereof is made. This offering is subject to errors, omissions, prior sales or withdrawal without notice.

**Lee Zerivitz, CCIM**  
Managing Partner  
Office: 407.644.CITY (2489)  
Cell: 407.929.3598

**CITY COMMERCIAL**  
1071 W. Morse Boulevard  
Suite 101  
Winter Park, FL 32789

lee@citycommercial.com

www.CITYcommercial.com