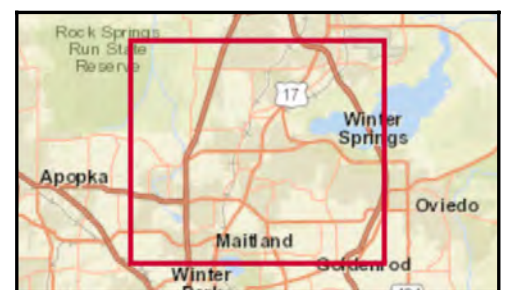


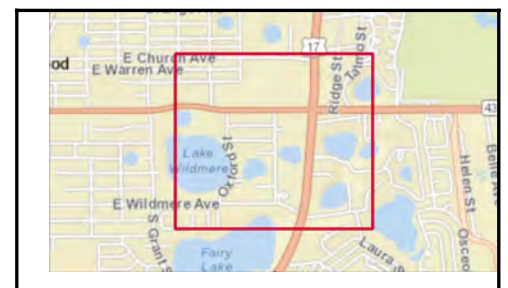
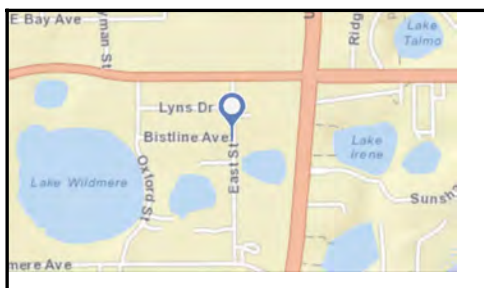
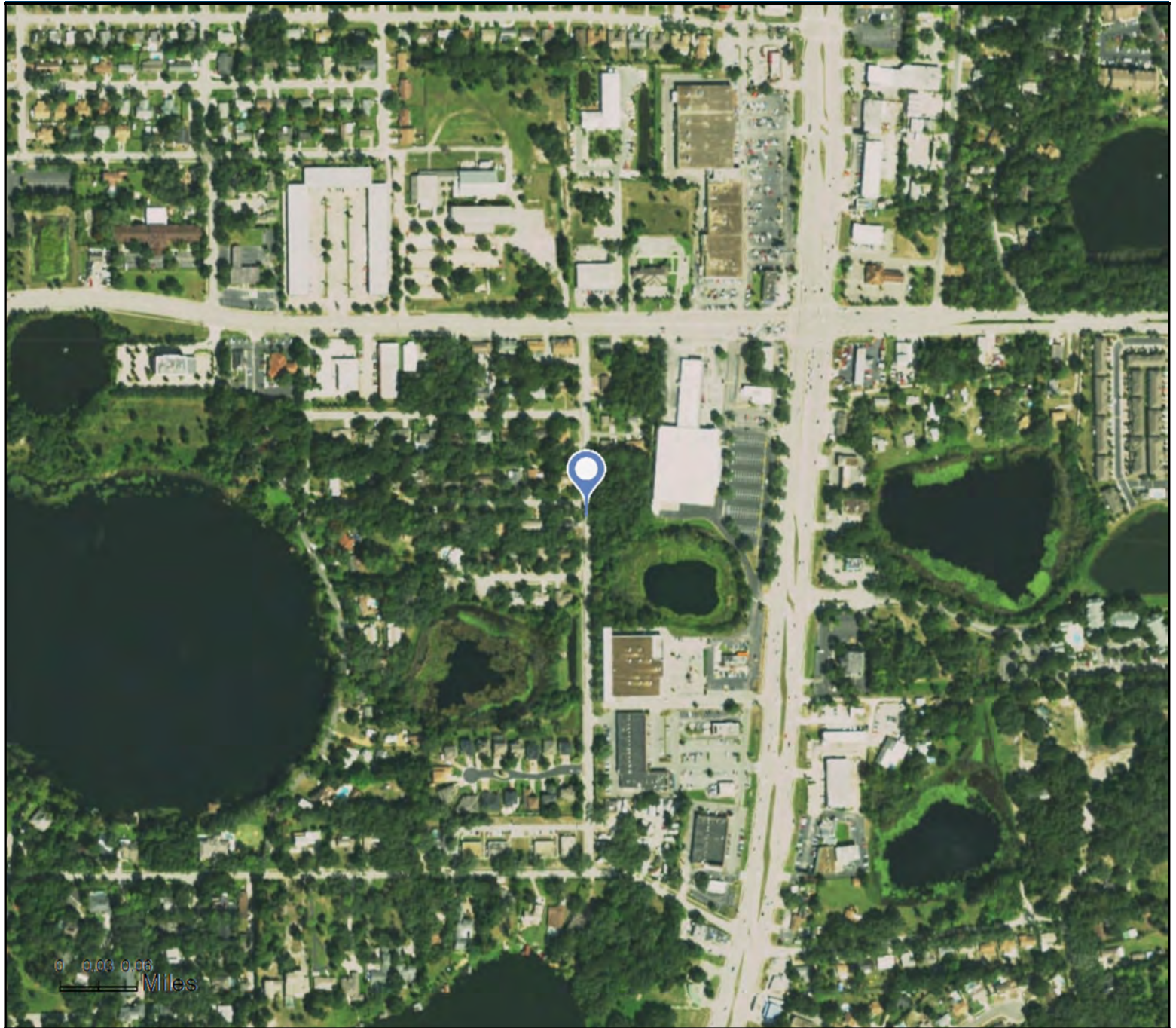
Average Daily Traffic Volume

- ▲ Up to 6,000 vehicles per day
- ▲ 6,001 - 15,000
- ▲ 15,001 - 30,000
- ▲ 30,001 - 50,000
- ▲ 50,001 - 100,000
- ▲ More than 100,000 per day



Source: ©2016 Kalibrate Technologies

May 18, 2017



Source: ArcGIS Online World Imagery Basemap



ACS Housing Summary

707 East St, Longwood, Florida, 32750
Ring: 1 mile radius

Prepared by Esri
Latitude: 28.69598
Longitude: -81.32970

	2010-2014 ACS Estimate	Percent	MOE(±)	Reliability
TOTALS				
Total Population	10,485		700	■■■
Total Households	3,621		166	■■■
Total Housing Units	4,589		189	■■■
OWNER-OCCUPIED HOUSING UNITS BY MORTGAGE STATUS				
Total	2,117	100.0%	109	■■■
Housing units with a mortgage/contract to purchase/similar debt	1,436	67.8%	95	■■■
Second mortgage only	132	6.2%	36	■
Home equity loan only	153	7.2%	26	■■■
Both second mortgage and home equity loan	14	0.7%	11	■
No second mortgage and no home equity loan	1,138	53.8%	95	■■■
Housing units without a mortgage	681	32.2%	83	■■■
AVERAGE VALUE BY MORTGAGE STATUS				
Housing units with a mortgage	N/A		N/A	
Housing units without a mortgage	N/A		N/A	
RENTER-OCCUPIED HOUSING UNITS BY CONTRACT RENT				
Total	1,504	100.0%	160	■■■
With cash rent	1,441	95.8%	157	■■■
Less than \$100	13	0.9%	44	■
\$100 to \$149	0	0.0%	0	
\$150 to \$199	0	0.0%	0	
\$200 to \$249	0	0.0%	0	
\$250 to \$299	7	0.5%	22	■
\$300 to \$349	21	1.4%	22	■
\$350 to \$399	0	0.0%	0	
\$400 to \$449	26	1.7%	36	■
\$450 to \$499	30	2.0%	53	■
\$500 to \$549	32	2.1%	25	■
\$550 to \$599	42	2.8%	47	■
\$600 to \$649	67	4.5%	19	■
\$650 to \$699	230	15.3%	76	■
\$700 to \$749	177	11.8%	83	■
\$750 to \$799	139	9.2%	58	■
\$800 to \$899	255	17.0%	99	■
\$900 to \$999	183	12.2%	59	■
\$1,000 to \$1,249	160	10.6%	58	■
\$1,250 to \$1,499	50	3.3%	52	■
\$1,500 to \$1,999	0	0.0%	0	
\$2,000 or more	10	0.7%	27	■
No cash rent	63	4.2%	47	■
Median Contract Rent	\$777		N/A	
Average Contract Rent	\$798		\$128	■■■
RENTER-OCCUPIED HOUSING UNITS BY INCLUSION OF UTILITIES IN RENT				
Total	1,504	100.0%	160	■■■
Pay extra for one or more utilities	1,474	98.0%	160	■■■
No extra payment for any utilities	30	2.0%	22	■

Source: U.S. Census Bureau, 2010-2014 American Community Survey

Reliability: ■■■ high ■ medium ■ low

May 18, 2017



ACS Housing Summary

707 East St, Longwood, Florida, 32750
Ring: 1 mile radius

Prepared by Esri
Latitude: 28.69598
Longitude: -81.32970

	2010-2014 ACS Estimate	Percent	MOE(±)	Reliability
HOUSING UNITS BY UNITS IN STRUCTURE				
Total	4,589	100.0%	189	High
1, detached	2,269	49.4%	135	High
1, attached	405	8.8%	97	Medium
2	17	0.4%	15	Low
3 or 4	95	2.1%	39	Medium
5 to 9	205	4.5%	69	Medium
10 to 19	488	10.6%	125	Medium
20 to 49	212	4.6%	85	Medium
50 or more	86	1.9%	50	Medium
Mobile home	814	17.7%	76	High
Boat, RV, van, etc.	0	0.0%	0	
HOUSING UNITS BY YEAR STRUCTURE BUILT				
Total	4,589	100.0%	189	High
Built 2010 or later	7	0.2%	23	Low
Built 2000 to 2009	388	8.5%	99	Medium
Built 1990 to 1999	574	12.5%	107	High
Built 1980 to 1989	1,255	27.3%	126	High
Built 1970 to 1979	1,436	31.3%	121	High
Built 1960 to 1969	481	10.5%	94	High
Built 1950 to 1959	369	8.0%	103	Medium
Built 1940 to 1949	59	1.3%	57	Low
Built 1939 or earlier	21	0.5%	11	Medium
Median Year Structure Built	1980		N/A	
OCCUPIED HOUSING UNITS BY YEAR HOUSEHOLDER MOVED INTO UNIT				
Total	3,621	100.0%	166	High
Owner occupied				
Moved in 2010 or later	158	4.4%	43	Medium
Moved in 2000 to 2009	866	23.9%	85	High
Moved in 1990 to 1999	568	15.7%	84	High
Moved in 1980 to 1989	271	7.5%	42	High
Moved in 1970 to 1979	211	5.8%	58	Medium
Moved in 1969 or earlier	43	1.2%	41	Low
Renter occupied				
Moved in 2010 or later	841	23.2%	134	High
Moved in 2000 to 2009	536	14.8%	107	Medium
Moved in 1990 to 1999	18	0.5%	53	Low
Moved in 1980 to 1989	20	0.6%	22	Low
Moved in 1970 to 1979	88	2.4%	65	Low
Moved in 1969 or earlier	0	0.0%	0	
Median Year Householder Moved Into Unit	2004		N/A	



ACS Housing Summary

707 East St, Longwood, Florida, 32750
Ring: 1 mile radius

Prepared by Esri
Latitude: 28.69598
Longitude: -81.32970

	2010-2014 ACS Estimate	Percent	MOE(±)	Reliability
OCCUPIED HOUSING UNITS BY HOUSE HEATING FUEL				
Total	3,621	100.0%	166	
Utility gas	57	1.6%	37	
Bottled, tank, or LP gas	0	0.0%	0	
Electricity	3,518	97.2%	168	
Fuel oil, kerosene, etc.	9	0.2%	14	
Coal or coke	0	0.0%	0	
Wood	5	0.1%	9	
Solar energy	0	0.0%	0	
Other fuel	0	0.0%	0	
No fuel used	33	0.9%	26	
OCCUPIED HOUSING UNITS BY VEHICLES AVAILABLE				
Total	3,621	100.0%	166	
Owner occupied				
No vehicle available	60	1.7%	32	
1 vehicle available	804	22.2%	89	
2 vehicles available	853	23.6%	88	
3 vehicles available	311	8.6%	53	
4 vehicles available	89	2.5%	42	
5 or more vehicles available	0	0.0%	0	
Renter occupied				
No vehicle available	139	3.8%	47	
1 vehicle available	779	21.5%	132	
2 vehicles available	469	13.0%	109	
3 vehicles available	117	3.2%	70	
4 vehicles available	0	0.0%	0	
5 or more vehicles available	0	0.0%	0	
Average Number of Vehicles Available	1.6		0.1	

Data Note: N/A means not available.

2010-2014 ACS Estimate: The American Community Survey (ACS) replaces census sample data. Esri is releasing the 2010-2014 ACS estimates, five-year period data collected monthly from January 1, 2010 through December 31, 2014. Although the ACS includes many of the subjects previously covered by the decennial census sample, there are significant differences between the two surveys including fundamental differences in survey design and residency rules.

Margin of error (MOE): The MOE is a measure of the variability of the estimate due to sampling error. MOEs enable the data user to measure the range of uncertainty for each estimate with 90 percent confidence. The range of uncertainty is called the confidence interval, and it is calculated by taking the estimate +/- the MOE. For example, if the ACS reports an estimate of 100 with an MOE of +/- 20, then you can be 90 percent certain the value for the whole population falls between 80 and 120.

Reliability: These symbols represent threshold values that Esri has established from the Coefficients of Variation (CV) to designate the usability of the estimates. The CV measures the amount of sampling error relative to the size of the estimate, expressed as a percentage.

- High Reliability: Small CVs (less than or equal to 12 percent) are flagged green to indicate that the sampling error is small relative to the estimate and the estimate is reasonably reliable.
- Medium Reliability: Estimates with CVs between 12 and 40 are flagged yellow-use with caution.
- Low Reliability: Large CVs (over 40 percent) are flagged red to indicate that the sampling error is large relative to the estimate. The estimate is considered very unreliable.



ACS Housing Summary

707 East St, Longwood, Florida, 32750
Ring: 3 mile radius

Prepared by Esri
Latitude: 28.69598
Longitude: -81.32970

	2010-2014 ACS Estimate	Percent	MOE(±)	Reliability
TOTALS				
Total Population	68,520		2,410	■■■
Total Households	23,356		624	■■■
Total Housing Units	27,298		667	■■■
OWNER-OCCUPIED HOUSING UNITS BY MORTGAGE STATUS				
Total	17,120	100.0%	563	■■■
Housing units with a mortgage/contract to purchase/similar debt	12,994	75.9%	542	■■■
Second mortgage only	544	3.2%	138	■
Home equity loan only	2,183	12.8%	218	■■■
Both second mortgage and home equity loan	113	0.7%	66	■
No second mortgage and no home equity loan	10,155	59.3%	524	■■■
Housing units without a mortgage	4,126	24.1%	314	■■■
AVERAGE VALUE BY MORTGAGE STATUS				
Housing units with a mortgage	N/A		N/A	
Housing units without a mortgage	N/A		N/A	
RENTER-OCCUPIED HOUSING UNITS BY CONTRACT RENT				
Total	6,236	100.0%	460	■■■
With cash rent	5,841	93.7%	444	■■■
Less than \$100	63	1.0%	64	■
\$100 to \$149	0	0.0%	0	
\$150 to \$199	0	0.0%	0	
\$200 to \$249	14	0.2%	22	■
\$250 to \$299	16	0.3%	25	■
\$300 to \$349	92	1.5%	72	■
\$350 to \$399	25	0.4%	23	■
\$400 to \$449	144	2.3%	96	■
\$450 to \$499	106	1.7%	77	■
\$500 to \$549	154	2.5%	61	■
\$550 to \$599	177	2.8%	70	■
\$600 to \$649	310	5.0%	89	■
\$650 to \$699	763	12.2%	211	■
\$700 to \$749	571	9.2%	173	■
\$750 to \$799	434	7.0%	128	■
\$800 to \$899	852	13.7%	218	■
\$900 to \$999	545	8.7%	144	■
\$1,000 to \$1,249	947	15.2%	193	■
\$1,250 to \$1,499	365	5.9%	116	■
\$1,500 to \$1,999	119	1.9%	43	■
\$2,000 or more	144	2.3%	66	■
No cash rent	395	6.3%	121	■
Median Contract Rent	\$806		N/A	
Average Contract Rent	N/A		N/A	
RENTER-OCCUPIED HOUSING UNITS BY INCLUSION OF UTILITIES IN RENT				
Total	6,236	100.0%	460	■■■
Pay extra for one or more utilities	5,892	94.5%	450	■■■
No extra payment for any utilities	344	5.5%	107	■

Source: U.S. Census Bureau, 2010-2014 American Community Survey

Reliability: ■■■ high ■ medium ■ low

May 18, 2017



ACS Housing Summary

707 East St, Longwood, Florida, 32750
Ring: 3 mile radius

Prepared by Esri
Latitude: 28.69598
Longitude: -81.32970

	2010-2014 ACS Estimate	Percent	MOE(±)	Reliability
HOUSING UNITS BY UNITS IN STRUCTURE				
Total	27,298	100.0%	667	High
1, detached	19,466	71.3%	589	High
1, attached	1,859	6.8%	245	High
2	172	0.6%	53	Medium
3 or 4	785	2.9%	169	Medium
5 to 9	965	3.5%	178	High
10 to 19	1,215	4.5%	245	Medium
20 to 49	461	1.7%	151	Medium
50 or more	399	1.5%	119	Medium
Mobile home	1,976	7.2%	282	High
Boat, RV, van, etc.	0	0.0%	0	High
HOUSING UNITS BY YEAR STRUCTURE BUILT				
Total	27,298	100.0%	667	High
Built 2010 or later	121	0.4%	61	Medium
Built 2000 to 2009	2,188	8.0%	257	High
Built 1990 to 1999	3,449	12.6%	346	High
Built 1980 to 1989	8,063	29.5%	478	High
Built 1970 to 1979	9,019	33.0%	514	High
Built 1960 to 1969	2,711	9.9%	273	High
Built 1950 to 1959	1,264	4.6%	186	High
Built 1940 to 1949	375	1.4%	173	Medium
Built 1939 or earlier	108	0.4%	48	Medium
Median Year Structure Built	1980		N/A	
OCCUPIED HOUSING UNITS BY YEAR HOUSEHOLDER MOVED INTO UNIT				
Total	23,356	100.0%	624	High
Owner occupied				
Moved in 2010 or later	1,707	7.3%	248	High
Moved in 2000 to 2009	7,001	30.0%	423	High
Moved in 1990 to 1999	4,432	19.0%	369	High
Moved in 1980 to 1989	2,374	10.2%	255	High
Moved in 1970 to 1979	1,306	5.6%	195	High
Moved in 1969 or earlier	300	1.3%	86	Medium
Renter occupied				
Moved in 2010 or later	3,552	15.2%	378	High
Moved in 2000 to 2009	2,124	9.1%	277	High
Moved in 1990 to 1999	182	0.8%	76	Medium
Moved in 1980 to 1989	139	0.6%	47	Medium
Moved in 1970 to 1979	235	1.0%	137	Medium
Moved in 1969 or earlier	3	0.0%	5	Low
Median Year Householder Moved Into Unit	2003		N/A	



ACS Housing Summary

707 East St, Longwood, Florida, 32750
Ring: 3 mile radius

Prepared by Esri
Latitude: 28.69598
Longitude: -81.32970

	2010-2014 ACS Estimate	Percent	MOE(±)	Reliability
OCCUPIED HOUSING UNITS BY HOUSE HEATING FUEL				
Total	23,356	100.0%	624	
Utility gas	2,223	9.5%	225	
Bottled, tank, or LP gas	149	0.6%	54	
Electricity	20,664	88.5%	638	
Fuel oil, kerosene, etc.	74	0.3%	40	
Coal or coke	2	0.0%	13	
Wood	20	0.1%	18	
Solar energy	0	0.0%	0	
Other fuel	13	0.1%	23	
No fuel used	211	0.9%	81	
OCCUPIED HOUSING UNITS BY VEHICLES AVAILABLE				
Total	23,356	100.0%	624	
Owner occupied				
No vehicle available	347	1.5%	105	
1 vehicle available	5,517	23.6%	407	
2 vehicles available	7,622	32.6%	436	
3 vehicles available	2,810	12.0%	318	
4 vehicles available	570	2.4%	132	
5 or more vehicles available	254	1.1%	105	
Renter occupied				
No vehicle available	545	2.3%	132	
1 vehicle available	3,216	13.8%	363	
2 vehicles available	1,853	7.9%	263	
3 vehicles available	528	2.3%	153	
4 vehicles available	65	0.3%	67	
5 or more vehicles available	29	0.1%	33	
Average Number of Vehicles Available	N/A		N/A	

Data Note: N/A means not available.

2010-2014 ACS Estimate: The American Community Survey (ACS) replaces census sample data. Esri is releasing the 2010-2014 ACS estimates, five-year period data collected monthly from January 1, 2010 through December 31, 2014. Although the ACS includes many of the subjects previously covered by the decennial census sample, there are significant differences between the two surveys including fundamental differences in survey design and residency rules.

Margin of error (MOE): The MOE is a measure of the variability of the estimate due to sampling error. MOEs enable the data user to measure the range of uncertainty for each estimate with 90 percent confidence. The range of uncertainty is called the confidence interval, and it is calculated by taking the estimate +/- the MOE. For example, if the ACS reports an estimate of 100 with an MOE of +/- 20, then you can be 90 percent certain the value for the whole population falls between 80 and 120.

Reliability: These symbols represent threshold values that Esri has established from the Coefficients of Variation (CV) to designate the usability of the estimates. The CV measures the amount of sampling error relative to the size of the estimate, expressed as a percentage.

- High Reliability: Small CVs (less than or equal to 12 percent) are flagged green to indicate that the sampling error is small relative to the estimate and the estimate is reasonably reliable.
- Medium Reliability: Estimates with CVs between 12 and 40 are flagged yellow-use with caution.
- Low Reliability: Large CVs (over 40 percent) are flagged red to indicate that the sampling error is large relative to the estimate. The estimate is considered very unreliable.



ACS Housing Summary

707 East St, Longwood, Florida, 32750
Ring: 5 mile radius

Prepared by Esri
Latitude: 28.69598
Longitude: -81.32970

	2010-2014 ACS Estimate	Percent	MOE(±)	Reliability
TOTALS				
Total Population	184,078		3,999	■■■
Total Households	66,908		1,140	■■■
Total Housing Units	82,272		1,229	■■■
OWNER-OCCUPIED HOUSING UNITS BY MORTGAGE STATUS				
Total	46,342	100.0%	992	■■■
Housing units with a mortgage/contract to purchase/similar debt	34,889	75.3%	984	■■■
Second mortgage only	1,677	3.6%	258	■■■
Home equity loan only	6,330	13.7%	479	■■■
Both second mortgage and home equity loan	304	0.7%	127	■
No second mortgage and no home equity loan	26,577	57.3%	916	■■■
Housing units without a mortgage	11,453	24.7%	543	■■■
AVERAGE VALUE BY MORTGAGE STATUS				
Housing units with a mortgage	N/A		N/A	
Housing units without a mortgage	N/A		N/A	
RENTER-OCCUPIED HOUSING UNITS BY CONTRACT RENT				
Total	20,567	100.0%	844	■■■
With cash rent	19,660	95.6%	825	■■■
Less than \$100	110	0.5%	87	■
\$100 to \$149	16	0.1%	25	■
\$150 to \$199	15	0.1%	19	■
\$200 to \$249	49	0.2%	33	■
\$250 to \$299	69	0.3%	45	■
\$300 to \$349	168	0.8%	103	■
\$350 to \$399	89	0.4%	61	■
\$400 to \$449	221	1.1%	112	■
\$450 to \$499	237	1.2%	118	■
\$500 to \$549	605	2.9%	176	■
\$550 to \$599	596	2.9%	160	■
\$600 to \$649	1,064	5.2%	183	■■■
\$650 to \$699	1,624	7.9%	293	■■■
\$700 to \$749	1,500	7.3%	275	■■■
\$750 to \$799	2,062	10.0%	290	■■■
\$800 to \$899	2,644	12.9%	345	■■■
\$900 to \$999	2,495	12.1%	347	■■■
\$1,000 to \$1,249	3,326	16.2%	376	■■■
\$1,250 to \$1,499	1,419	6.9%	221	■■■
\$1,500 to \$1,999	796	3.9%	165	■
\$2,000 or more	553	2.7%	118	■
No cash rent	907	4.4%	210	■
Median Contract Rent	\$853		N/A	
Average Contract Rent	N/A		N/A	
RENTER-OCCUPIED HOUSING UNITS BY INCLUSION OF UTILITIES IN RENT				
Total	20,567	100.0%	844	■■■
Pay extra for one or more utilities	19,489	94.8%	829	■■■
No extra payment for any utilities	1,077	5.2%	196	■■■

Source: U.S. Census Bureau, 2010-2014 American Community Survey

Reliability: ■■■ high ■ medium ■ low

May 18, 2017



ACS Housing Summary

707 East St, Longwood, Florida, 32750
Ring: 5 mile radius

Prepared by Esri
Latitude: 28.69598
Longitude: -81.32970

	2010-2014 ACS Estimate	Percent	MOE(±)	Reliability
HOUSING UNITS BY UNITS IN STRUCTURE				
Total	82,272	100.0%	1,229	High
1, detached	48,737	59.2%	968	High
1, attached	7,229	8.8%	513	High
2	551	0.7%	166	Medium
3 or 4	3,397	4.1%	345	High
5 to 9	6,550	8.0%	518	High
10 to 19	6,737	8.2%	535	High
20 to 49	4,409	5.4%	452	High
50 or more	1,802	2.2%	242	High
Mobile home	2,844	3.5%	333	High
Boat, RV, van, etc.	17	0.0%	16	Low
HOUSING UNITS BY YEAR STRUCTURE BUILT				
Total	82,272	100.0%	1,229	High
Built 2010 or later	267	0.3%	78	Medium
Built 2000 to 2009	7,264	8.8%	461	High
Built 1990 to 1999	10,795	13.1%	630	High
Built 1980 to 1989	29,266	35.6%	958	High
Built 1970 to 1979	22,754	27.7%	855	High
Built 1960 to 1969	7,547	9.2%	509	High
Built 1950 to 1959	3,516	4.3%	306	High
Built 1940 to 1949	509	0.6%	182	Medium
Built 1939 or earlier	355	0.4%	97	Medium
Median Year Structure Built	1982		N/A	
OCCUPIED HOUSING UNITS BY YEAR HOUSEHOLDER MOVED INTO UNIT				
Total	66,908	100.0%	1,140	High
Owner occupied				
Moved in 2010 or later	4,414	6.6%	419	High
Moved in 2000 to 2009	20,180	30.2%	807	High
Moved in 1990 to 1999	11,757	17.6%	630	High
Moved in 1980 to 1989	6,276	9.4%	439	High
Moved in 1970 to 1979	2,762	4.1%	292	High
Moved in 1969 or earlier	952	1.4%	154	High
Renter occupied				
Moved in 2010 or later	11,933	17.8%	671	High
Moved in 2000 to 2009	7,417	11.1%	555	High
Moved in 1990 to 1999	580	0.9%	138	Medium
Moved in 1980 to 1989	347	0.5%	117	Medium
Moved in 1970 to 1979	250	0.4%	137	Medium
Moved in 1969 or earlier	40	0.1%	58	Low
Median Year Householder Moved Into Unit	2004		N/A	



ACS Housing Summary

707 East St, Longwood, Florida, 32750
Ring: 5 mile radius

Prepared by Esri
Latitude: 28.69598
Longitude: -81.32970

	2010-2014 ACS Estimate	Percent	MOE(±)	Reliability
OCCUPIED HOUSING UNITS BY HOUSE HEATING FUEL				
Total	66,908	100.0%	1,140	
Utility gas	4,297	6.4%	342	
Bottled, tank, or LP gas	541	0.8%	134	
Electricity	61,208	91.5%	1,161	
Fuel oil, kerosene, etc.	331	0.5%	82	
Coal or coke	32	0.0%	40	
Wood	78	0.1%	46	
Solar energy	0	0.0%	0	
Other fuel	44	0.1%	36	
No fuel used	377	0.6%	122	
OCCUPIED HOUSING UNITS BY VEHICLES AVAILABLE				
Total	66,908	100.0%	1,140	
Owner occupied				
No vehicle available	950	1.4%	171	
1 vehicle available	14,618	21.8%	722	
2 vehicles available	21,742	32.5%	812	
3 vehicles available	6,960	10.4%	495	
4 vehicles available	1,434	2.1%	206	
5 or more vehicles available	638	1.0%	175	
Renter occupied				
No vehicle available	1,608	2.4%	226	
1 vehicle available	11,420	17.1%	663	
2 vehicles available	5,954	8.9%	492	
3 vehicles available	1,219	1.8%	240	
4 vehicles available	237	0.4%	118	
5 or more vehicles available	129	0.2%	87	
Average Number of Vehicles Available	N/A		N/A	

Data Note: N/A means not available.

2010-2014 ACS Estimate: The American Community Survey (ACS) replaces census sample data. Esri is releasing the 2010-2014 ACS estimates, five-year period data collected monthly from January 1, 2010 through December 31, 2014. Although the ACS includes many of the subjects previously covered by the decennial census sample, there are significant differences between the two surveys including fundamental differences in survey design and residency rules.

Margin of error (MOE): The MOE is a measure of the variability of the estimate due to sampling error. MOEs enable the data user to measure the range of uncertainty for each estimate with 90 percent confidence. The range of uncertainty is called the confidence interval, and it is calculated by taking the estimate +/- the MOE. For example, if the ACS reports an estimate of 100 with an MOE of +/- 20, then you can be 90 percent certain the value for the whole population falls between 80 and 120.

Reliability: These symbols represent threshold values that Esri has established from the Coefficients of Variation (CV) to designate the usability of the estimates. The CV measures the amount of sampling error relative to the size of the estimate, expressed as a percentage.

- High Reliability: Small CVs (less than or equal to 12 percent) are flagged green to indicate that the sampling error is small relative to the estimate and the estimate is reasonably reliable.
- Medium Reliability: Estimates with CVs between 12 and 40 are flagged yellow-use with caution.
- Low Reliability: Large CVs (over 40 percent) are flagged red to indicate that the sampling error is large relative to the estimate. The estimate is considered very unreliable.

Source: U.S. Census Bureau, 2010-2014 American Community Survey

Reliability: high medium low

May 18, 2017



ACS Population Summary

707 East St, Longwood, Florida, 32750
Ring: 1 mile radius

Prepared by Esri
Latitude: 28.69598
Longitude: -81.32970

	2010 - 2014 ACS Estimate	Percent	MOE(±)	Reliability
TOTALS				
Total Population	10,485		700	
Total Households	3,621		166	
Total Housing Units	4,589		189	
POPULATION AGE 3+ YEARS BY SCHOOL ENROLLMENT				
Total	10,011	100.0%	682	
Enrolled in school	2,434	24.3%	242	
Enrolled in nursery school, preschool	248	2.5%	83	
Public school	230	2.3%	85	
Private school	19	0.2%	38	
Enrolled in kindergarten	89	0.9%	33	
Public school	73	0.7%	26	
Private school	16	0.2%	16	
Enrolled in grade 1 to grade 4	387	3.9%	91	
Public school	357	3.6%	91	
Private school	30	0.3%	11	
Enrolled in grade 5 to grade 8	480	4.8%	98	
Public school	458	4.6%	96	
Private school	23	0.2%	17	
Enrolled in grade 9 to grade 12	361	3.6%	78	
Public school	335	3.3%	77	
Private school	26	0.3%	15	
Enrolled in college undergraduate years	810	8.1%	148	
Public school	682	6.8%	124	
Private school	128	1.3%	83	
Enrolled in graduate or professional school	59	0.6%	45	
Public school	59	0.6%	45	
Private school	0	0.0%	0	
Not enrolled in school	7,577	75.7%	475	
POPULATION AGE 65+ BY RELATIONSHIP AND HOUSEHOLD TYPE				
Total	1,669	100.0%	152	
Living in Households	1,514	90.7%	144	
Living in Family Households	1,011	60.6%	131	
Householder	472	28.3%	75	
Spouse	279	16.7%	55	
Parent	64	3.8%	39	
Parent-in-law	136	8.1%	128	
Other Relative	60	3.6%	72	
Nonrelative	0	0.0%	0	
Living in Nonfamily Households	502	30.1%	73	
Householder	473	28.3%	70	
Nonrelative	29	1.7%	3	
Living in Group Quarters	156	9.3%	108	



ACS Population Summary

707 East St, Longwood, Florida, 32750
Ring: 1 mile radius

Prepared by Esri
Latitude: 28.69598
Longitude: -81.32970

	2010 - 2014 ACS Estimate	Percent	MOE(±)	Reliability
HOUSEHOLDS BY TYPE AND SIZE AND AGE				
Family Households	2,253	62.2%	153	High
2-Person	1,046	28.9%	125	High
3-Person	508	14.0%	98	High
4-Person	424	11.7%	70	High
5-Person	230	6.4%	59	Medium
6-Person	25	0.7%	29	Low
7+ Person	21	0.6%	15	Low
Nonfamily Households	1,368	37.8%	137	High
1-Person	1,088	30.0%	109	High
2-Person	265	7.3%	93	Medium
3-Person	7	0.2%	10	Low
4-Person	8	0.2%	31	Low
5-Person	0	0.0%	0	
6-Person	0	0.0%	0	
7+ Person	0	0.0%	0	
HOUSEHOLDS BY PRESENCE OF PEOPLE UNDER 18 YEARS BY HOUSEHOLD TYPE				
Households with one or more people under 18 years	1,080	29.8%	118	High
Family households	1,080	29.8%	118	High
Married-couple family	588	16.2%	91	High
Male householder, no wife present	72	2.0%	42	Medium
Female householder, no husband present	420	11.6%	75	High
Nonfamily households	0	0.0%	0	
Households with no people under 18 years	2,541	70.2%	172	High
Married-couple family	916	25.3%	126	High
Other family	256	7.1%	59	Medium
Nonfamily households	1,368	37.8%	137	High
HOUSEHOLDS BY PRESENCE OF PEOPLE 65 YEARS AND OVER, HOUSEHOLD SIZE AND HOUSEHOLD TYPE				
Households with Pop 65+	1,139	31.5%	109	High
1-Person	469	13.0%	72	High
2+ Person Family	625	17.3%	88	High
2+ Person Nonfamily	45	1.2%	52	Low
Households with No Pop 65+	2,482	68.5%	164	High
1-Person	619	17.1%	93	High
2+ Person Family	1,628	45.0%	140	High
2+ Person Nonfamily	235	6.5%	92	Medium



ACS Population Summary

707 East St, Longwood, Florida, 32750
Ring: 1 mile radius

Prepared by Esri
Latitude: 28.69598
Longitude: -81.32970

	2010 - 2014 ACS Estimate	Percent	MOE(±)	Reliability
POPULATION AGE 5+ YEARS BY LANGUAGE SPOKEN AT HOME AND ABILITY TO SPEAK ENGLISH				
Total	9,550	100.0%	637	
5 to 17 years				
Speak only English	1,177	12.3%	159	
Speak Spanish	189	2.0%	78	
Speak English "very well" or "well"	171	1.8%	78	
Speak English "not well"	18	0.2%	28	
Speak English "not at all"	0	0.0%	0	
Speak other Indo-European languages	9	0.1%	14	
Speak English "very well" or "well"	9	0.1%	14	
Speak English "not well"	0	0.0%	0	
Speak English "not at all"	0	0.0%	0	
Speak Asian and Pacific Island languages	25	0.3%	39	
Speak English "very well" or "well"	25	0.3%	39	
Speak English "not well"	0	0.0%	0	
Speak English "not at all"	0	0.0%	0	
Speak other languages	0	0.0%	0	
Speak English "very well" or "well"	0	0.0%	0	
Speak English "not well"	0	0.0%	0	
Speak English "not at all"	0	0.0%	0	
18 to 64 years				
Speak only English	5,285	55.3%	455	
Speak Spanish	871	9.1%	219	
Speak English "very well" or "well"	736	7.7%	192	
Speak English "not well"	100	1.0%	127	
Speak English "not at all"	35	0.4%	47	
Speak other Indo-European languages	233	2.4%	168	
Speak English "very well" or "well"	227	2.4%	164	
Speak English "not well"	6	0.1%	10	
Speak English "not at all"	0	0.0%	0	
Speak Asian and Pacific Island languages	81	0.8%	60	
Speak English "very well" or "well"	51	0.5%	42	
Speak English "not well"	21	0.2%	31	
Speak English "not at all"	9	0.1%	14	
Speak other languages	11	0.1%	10	
Speak English "very well" or "well"	11	0.1%	10	
Speak English "not well"	0	0.0%	0	
Speak English "not at all"	0	0.0%	0	
65 years and over				
Speak only English	1,350	14.1%	136	
Speak Spanish	214	2.2%	91	
Speak English "very well" or "well"	170	1.8%	86	
Speak English "not well"	43	0.5%	34	
Speak English "not at all"	1	0.0%	6	
Speak other Indo-European languages	75	0.8%	42	
Speak English "very well" or "well"	68	0.7%	37	
Speak English "not well"	7	0.1%	12	
Speak English "not at all"	0	0.0%	0	
Speak Asian and Pacific Island languages	30	0.3%	32	
Speak English "very well" or "well"	0	0.0%	0	
Speak English "not well"	7	0.1%	11	
Speak English "not at all"	23	0.2%	39	
Speak other languages	0	0.0%	0	
Speak English "very well" or "well"	0	0.0%	0	
Speak English "not well"	0	0.0%	0	
Speak English "not at all"	0	0.0%	0	

Source: U.S. Census Bureau, 2010-2014 American Community Survey

Reliability: high medium low

May 18, 2017



ACS Population Summary

707 East St, Longwood, Florida, 32750
Ring: 1 mile radius

Prepared by Esri
Latitude: 28.69598
Longitude: -81.32970

	2010 - 2014 ACS Estimate	Percent	MOE(±)	Reliability
WORKERS AGE 16+ YEARS BY PLACE OF WORK				
Total	4,683	100.0%	469	
Worked in state and in county of residence	2,982	63.7%	357	
Worked in state and outside county of residence	1,698	36.3%	263	
Worked outside state of residence	4	0.1%	14	
WORKERS AGE 16+ YEARS BY MEANS OF TRANSPORTATION TO WORK				
Total	4,683	100.0%	469	
Drove alone	3,723	79.5%	421	
Carpooled	403	8.6%	121	
Public transportation (excluding taxicab)	63	1.3%	90	
Bus or trolley bus	63	1.3%	90	
Streetcar or trolley car	0	0.0%	0	
Subway or elevated	0	0.0%	0	
Railroad	0	0.0%	0	
Ferryboat	0	0.0%	0	
Taxicab	0	0.0%	0	
Motorcycle	23	0.5%	14	
Bicycle	97	2.1%	87	
Walked	51	1.1%	49	
Other means	171	3.7%	150	
Worked at home	151	3.2%	34	
WORKERS AGE 16+ YEARS (WHO DID NOT WORK FROM HOME) BY TRAVEL TIME TO WORK				
Total	4,532	100.0%	469	
Less than 5 minutes	56	1.2%	50	
5 to 9 minutes	272	6.0%	131	
10 to 14 minutes	510	11.3%	127	
15 to 19 minutes	883	19.5%	208	
20 to 24 minutes	842	18.6%	184	
25 to 29 minutes	338	7.5%	86	
30 to 34 minutes	781	17.2%	213	
35 to 39 minutes	157	3.5%	85	
40 to 44 minutes	163	3.6%	70	
45 to 59 minutes	337	7.4%	119	
60 to 89 minutes	73	1.6%	48	
90 or more minutes	119	2.6%	62	
Average Travel Time to Work (in minutes)	N/A		N/A	
FEMALES AGE 20-64 YEARS BY AGE OF OWN CHILDREN AND EMPLOYMENT STATUS				
Total	3,030	100.0%	292	
Own children under 6 years only	346	11.4%	117	
In labor force	277	9.1%	117	
Not in labor force	69	2.3%	51	
Own children under 6 years and 6 to 17 years	310	10.2%	86	
In labor force	148	4.9%	63	
Not in labor force	162	5.3%	80	
Own children 6 to 17 years only	478	15.8%	78	
In labor force	386	12.7%	65	
Not in labor force	91	3.0%	46	
No own children under 18 years	1,896	62.6%	246	
In labor force	1,498	49.4%	223	
Not in labor force	398	13.1%	95	

Source: U.S. Census Bureau, 2010-2014 American Community Survey

Reliability: high medium low

May 18, 2017



ACS Population Summary

707 East St, Longwood, Florida, 32750
Ring: 1 mile radius

Prepared by Esri
Latitude: 28.69598
Longitude: -81.32970

	2010 - 2014 ACS Estimate	Percent	MOE(±)	Reliability
CIVILIAN NONINSTITUTIONALIZED POPULATION BY AGE & TYPES OF HEALTH INSURANCE COVERAGE				
Total	10,439	100.0%	700	
Under 18 years:	2,335	22.4%	263	
One Type of Health Insurance:	1,912	18.3%	235	
Employer-Based Health Ins Only	761	7.3%	175	
Direct-Purchase Health Ins Only	170	1.6%	72	
Medicare Coverage Only	32	0.3%	28	
Medicaid Coverage Only	949	9.1%	199	
TRICARE/Military Hlth Cov Only	0	0.0%	0	
VA Health Care Only	0	0.0%	0	
2+ Types of Health Insurance	33	0.3%	20	
No Health Insurance Coverage	389	3.7%	108	
18 to 34 years:	2,580	24.7%	308	
One Type of Health Insurance:	1,305	12.5%	185	
Employer-Based Health Ins Only	853	8.2%	156	
Direct-Purchase Health Ins Only	137	1.3%	89	
Medicare Coverage Only	0	0.0%	0	
Medicaid Coverage Only	286	2.7%	90	
TRICARE/Military Hlth Cov Only	0	0.0%	0	
VA Health Care Only	29	0.3%	49	
2+ Types of Health Insurance	120	1.1%	111	
No Health Insurance Coverage	1,155	11.1%	208	
35 to 64 years:	3,889	37.3%	381	
One Type of Health Insurance:	2,420	23.2%	292	
Employer-Based Health Ins Only	1,833	17.6%	266	
Direct-Purchase Health Ins Only	140	1.3%	29	
Medicare Coverage Only	92	0.9%	64	
Medicaid Coverage Only	265	2.5%	144	
TRICARE/Military Hlth Cov Only	44	0.4%	34	
VA Health Care Only	46	0.4%	34	
2+ Types of Health Insurance	323	3.1%	81	
No Health Insurance Coverage	1,146	11.0%	270	
65+ years:	1,636	15.7%	151	
One Type of Health Insurance:	537	5.1%	86	
Employer-Based Health Ins Only	30	0.3%	21	
Direct-Purchase Health Ins Only	0	0.0%	0	
Medicare Coverage Only	508	4.9%	85	
TRICARE/Military Hlth Cov Only	0	0.0%	0	
VA Health Care Only	0	0.0%	0	
2+ Types of Health Insurance:	1,099	10.5%	133	
Employer-Based & Direct-Purchase Health Insurance	0	0.0%	0	
Employer-Based Health & Medicare Insurance	200	1.9%	56	
Direct-Purchase Health & Medicare Insurance	184	1.8%	49	
Medicare & Medicaid Coverage	321	3.1%	100	
Other Private Health Insurance Combos	0	0.0%	0	
Other Public Health Insurance Combos	124	1.2%	45	
Other Health Insurance Combinations	269	2.6%	58	
No Health Insurance Coverage	0	0.0%	0	

Source: U.S. Census Bureau, 2010-2014 American Community Survey

Reliability: high medium low

May 18, 2017



ACS Population Summary

707 East St, Longwood, Florida, 32750
Ring: 1 mile radius

Prepared by Esri
Latitude: 28.69598
Longitude: -81.32970

	2010 - 2014 ACS Estimate	Percent	MOE(±)	Reliability
POPULATION BY RATIO OF INCOME TO POVERTY LEVEL				
Total	10,439	100.0%	700	
Under .50	896	8.6%	315	
.50 to .99	1,017	9.7%	195	
1.00 to 1.24	704	6.7%	247	
1.25 to 1.49	650	6.2%	185	
1.50 to 1.84	652	6.2%	208	
1.85 to 1.99	406	3.9%	266	
2.00 and over	6,114	58.6%	564	
CIVILIAN POPULATION AGE 18 OR OLDER BY VETERAN STATUS				
Total	8,147	100.0%	575	
Veteran	974	12.0%	124	
Nonveteran	7,173	88.0%	553	
Male	4,073	50.0%	368	
Veteran	816	10.0%	113	
Nonveteran	3,257	40.0%	356	
Female	4,074	50.0%	329	
Veteran	158	1.9%	95	
Nonveteran	3,916	48.1%	318	
CIVILIAN VETERANS AGE 18 OR OLDER BY PERIOD OF MILITARY SERVICE				
Total	974	100.0%	124	
Gulf War (9/01 or later), no Gulf War (8/90 to 8/01), no Vietnam Era	133	13.7%	84	
Gulf War (9/01 or later) and Gulf War (8/90 to 8/01), no Vietnam Era	28	2.9%	27	
Gulf War (9/01 or later), and Gulf War (8/90 to 8/01), and Vietnam Era	0	0.0%	0	
Gulf War (8/90 to 8/01), no Vietnam Era	81	8.3%	54	
Gulf War (8/90 to 8/01) and Vietnam Era	2	0.2%	14	
Vietnam Era, no Korean War, no World War II	280	28.7%	78	
Vietnam Era and Korean War, no World War II	2	0.2%	13	
Vietnam Era and Korean War and World War II	28	2.9%	80	
Korean War, no Vietnam Era, no World War II	59	6.1%	29	
Korean War and World War II, no Vietnam Era	0	0.0%	0	
World War II, no Korean War, no Vietnam Era	113	11.6%	56	
Between Gulf War and Vietnam Era only	130	13.3%	46	
Between Vietnam Era and Korean War only	110	11.3%	46	
Between Korean War and World War II only	8	0.8%	12	
Pre-World War II only	0	0.0%	0	
HOUSEHOLDS BY POVERTY STATUS				
Total	3,621	100.0%	166	
Income in the past 12 months below poverty level	599	16.5%	92	
Married-couple family	127	3.5%	58	
Other family - male householder (no wife present)	2	0.1%	9	
Other family - female householder (no husband present)	200	5.5%	51	
Nonfamily household - male householder	149	4.1%	68	
Nonfamily household - female householder	122	3.4%	48	
Income in the past 12 months at or above poverty level	3,022	83.5%	168	
Married-couple family	1,377	38.0%	138	
Other family - male householder (no wife present)	142	3.9%	42	
Other family - female householder (no husband present)	405	11.2%	79	
Nonfamily household - male householder	523	14.4%	108	
Nonfamily household - female householder	576	15.9%	76	

Source: U.S. Census Bureau, 2010-2014 American Community Survey

Reliability: high medium low

May 18, 2017



ACS Population Summary

707 East St, Longwood, Florida, 32750
Ring: 1 mile radius

Prepared by Esri
Latitude: 28.69598
Longitude: -81.32970

	2010 - 2014 ACS Estimate	Percent	MOE(±)	Reliability
HOUSEHOLDS BY OTHER INCOME				
Social Security Income	1,176	32.5%	108	High
No Social Security Income	2,445	67.5%	162	High
Retirement Income	479	13.2%	60	High
No Retirement Income	3,142	86.8%	170	High
GROSS RENT AS A PERCENTAGE OF HOUSEHOLD INCOME IN THE PAST 12 MONTHS				
<10% of Income	3	0.2%	6	Low
10-14.9% of Income	115	7.6%	60	Medium
15-19.9% of Income	153	10.2%	84	Medium
20-24.9% of Income	155	10.3%	76	Medium
25-29.9% of Income	254	16.9%	79	Medium
30-34.9% of Income	142	9.4%	53	Medium
35-39.9% of Income	147	9.8%	68	Medium
40-49.9% of Income	154	10.2%	58	Medium
50+% of Income	298	19.8%	72	Medium
Gross Rent % Inc Not Computed	83	5.5%	58	Low
HOUSEHOLDS BY PUBLIC ASSISTANCE INCOME IN THE PAST 12 MONTHS				
Total	3,621	100.0%	166	High
With public assistance income	118	3.3%	40	Medium
No public assistance income	3,503	96.7%	167	High
HOUSEHOLDS BY FOOD STAMPS/SNAP STATUS				
Total	3,621	100.0%	166	High
With Food Stamps/SNAP	549	15.2%	84	High
With No Food Stamps/SNAP	3,072	84.8%	165	High
HOUSEHOLDS BY DISABILITY STATUS				
Total	3,621	100.0%	166	High
With 1+ Persons w/Disability	979	27.0%	104	High
With No Person w/Disability	2,642	73.0%	177	High

Data Note: N/A means not available. Population by Ratio of Income to Poverty Level represents persons for whom poverty status is determined. Household income represents income in 2014, adjusted for inflation.

2010-2014 ACS Estimate: The American Community Survey (ACS) replaces census sample data. Esri is releasing the 2010-2014 ACS estimates, five-year period data collected monthly from January 1, 2010 through December 31, 2014. Although the ACS includes many of the subjects previously covered by the decennial census sample, there are significant differences between the two surveys including fundamental differences in survey design and residency rules.

Margin of error (MOE): The MOE is a measure of the variability of the estimate due to sampling error. MOEs enable the data user to measure the range of uncertainty for each estimate with 90 percent confidence. The range of uncertainty is called the confidence interval, and it is calculated by taking the estimate +/- the MOE. For example, if the ACS reports an estimate of 100 with an MOE of +/- 20, then you can be 90 percent certain the value for the whole population falls between 80 and 120.

Reliability: These symbols represent threshold values that Esri has established from the Coefficients of Variation (CV) to designate the usability of the estimates. The CV measures the amount of sampling error relative to the size of the estimate, expressed as a percentage.

- High Reliability: Small CVs (less than or equal to 12 percent) are flagged green to indicate that the sampling error is small relative to the estimate and the estimate is reasonably reliable.
- Medium Reliability: Estimates with CVs between 12 and 40 are flagged yellow-use with caution.
- Low Reliability: Large CVs (over 40 percent) are flagged red to indicate that the sampling error is large relative to the estimate. The estimate is considered very unreliable.



ACS Population Summary

707 East St, Longwood, Florida, 32750
Ring: 3 mile radius

Prepared by Esri
Latitude: 28.69598
Longitude: -81.32970

	2010 - 2014 ACS Estimate	Percent	MOE(±)	Reliability
TOTALS				
Total Population	68,520		2,410	■■■
Total Households	23,356		624	■■■
Total Housing Units	27,298		667	■■■
POPULATION AGE 3+ YEARS BY SCHOOL ENROLLMENT				
Total	66,520	100.0%	2,327	■■■
Enrolled in school	17,480	26.3%	1,043	■■■
Enrolled in nursery school, preschool	994	1.5%	233	■■■
Public school	582	0.9%	212	■■■
Private school	412	0.6%	107	■■■
Enrolled in kindergarten	680	1.0%	175	■■■
Public school	547	0.8%	164	■■■
Private school	134	0.2%	60	■■■
Enrolled in grade 1 to grade 4	2,781	4.2%	363	■■■
Public school	2,540	3.8%	357	■■■
Private school	241	0.4%	83	■■■
Enrolled in grade 5 to grade 8	3,372	5.1%	439	■■■
Public school	3,096	4.7%	421	■■■
Private school	277	0.4%	130	■■■
Enrolled in grade 9 to grade 12	3,555	5.3%	396	■■■
Public school	3,229	4.9%	368	■■■
Private school	326	0.5%	146	■■■
Enrolled in college undergraduate years	5,226	7.9%	542	■■■
Public school	4,279	6.4%	475	■■■
Private school	947	1.4%	225	■■■
Enrolled in graduate or professional school	871	1.3%	253	■■■
Public school	519	0.8%	149	■■■
Private school	352	0.5%	205	■■■
Not enrolled in school	49,040	73.7%	1,535	■■■
POPULATION AGE 65+ BY RELATIONSHIP AND HOUSEHOLD TYPE				
Total	10,306	100.0%	643	■■■
Living in Households	9,949	96.5%	626	■■■
Living in Family Households	7,013	68.0%	580	■■■
Householder	3,141	30.5%	285	■■■
Spouse	2,067	20.1%	216	■■■
Parent	873	8.5%	246	■■■
Parent-in-law	616	6.0%	260	■■■
Other Relative	273	2.6%	132	■■■
Nonrelative	43	0.4%	45	■■■
Living in Nonfamily Households	2,936	28.5%	333	■■■
Householder	2,646	25.7%	283	■■■
Nonrelative	290	2.8%	2	■■■
Living in Group Quarters	357	3.5%	163	■■■



ACS Population Summary

707 East St, Longwood, Florida, 32750
Ring: 3 mile radius

Prepared by Esri
Latitude: 28.69598
Longitude: -81.32970

	2010 - 2014 ACS Estimate	Percent	MOE(±)	Reliability
HOUSEHOLDS BY TYPE AND SIZE AND AGE				
Family Households	15,493	66.3%	584	■■■
2-Person	7,203	30.8%	447	■■■
3-Person	3,698	15.8%	340	■■■
4-Person	3,065	13.1%	318	■■■
5-Person	1,127	4.8%	221	■■■
6-Person	317	1.4%	111	■■■
7+ Person	83	0.4%	51	■■■
Nonfamily Households	7,863	33.7%	488	■■■
1-Person	6,744	28.9%	465	■■■
2-Person	993	4.3%	175	■■■
3-Person	51	0.2%	30	■■■
4-Person	76	0.3%	41	■■■
5-Person	0	0.0%	0	■■■
6-Person	0	0.0%	0	■■■
7+ Person	0	0.0%	0	■■■
HOUSEHOLDS BY PRESENCE OF PEOPLE UNDER 18 YEARS BY HOUSEHOLD TYPE				
Households with one or more people under 18 years	6,521	27.9%	431	■■■
Family households	6,454	27.6%	430	■■■
Married-couple family	4,136	17.7%	353	■■■
Male householder, no wife present	531	2.3%	168	■■■
Female householder, no husband present	1,787	7.7%	260	■■■
Nonfamily households	67	0.3%	35	■■■
Households with no people under 18 years	16,835	72.1%	598	■■■
Married-couple family	7,232	31.0%	447	■■■
Other family	1,807	7.7%	239	■■■
Nonfamily households	7,796	33.4%	488	■■■
HOUSEHOLDS BY PRESENCE OF PEOPLE 65 YEARS AND OVER, HOUSEHOLD SIZE AND HOUSEHOLD TYPE				
Households with Pop 65+	6,704	28.7%	398	■■■
1-Person	2,479	10.6%	279	■■■
2+ Person Family	4,004	17.1%	316	■■■
2+ Person Nonfamily	222	1.0%	98	■■■
Households with No Pop 65+	16,652	71.3%	599	■■■
1-Person	4,265	18.3%	386	■■■
2+ Person Family	11,489	49.2%	552	■■■
2+ Person Nonfamily	898	3.8%	151	■■■



ACS Population Summary

707 East St, Longwood, Florida, 32750
Ring: 3 mile radius

Prepared by Esri
Latitude: 28.69598
Longitude: -81.32970

	2010 - 2014 ACS Estimate	Percent	MOE(±)	Reliability
POPULATION AGE 5+ YEARS BY LANGUAGE SPOKEN AT HOME AND ABILITY TO SPEAK ENGLISH				
Total	64,841	100.0%	2,228	
5 to 17 years				
Speak only English	8,158	12.6%	691	
Speak Spanish	1,557	2.4%	423	
Speak English "very well" or "well"	1,517	2.3%	423	
Speak English "not well"	41	0.1%	32	
Speak English "not at all"	0	0.0%	0	
Speak other Indo-European languages	246	0.4%	98	
Speak English "very well" or "well"	246	0.4%	91	
Speak English "not well"	0	0.0%	0	
Speak English "not at all"	0	0.0%	0	
Speak Asian and Pacific Island languages	152	0.2%	65	
Speak English "very well" or "well"	152	0.2%	65	
Speak English "not well"	0	0.0%	0	
Speak English "not at all"	0	0.0%	0	
Speak other languages	0	0.0%	0	
Speak English "very well" or "well"	0	0.0%	0	
Speak English "not well"	0	0.0%	0	
Speak English "not at all"	0	0.0%	0	
18 to 64 years				
Speak only English	35,830	55.3%	1,517	
Speak Spanish	6,236	9.6%	749	
Speak English "very well" or "well"	5,396	8.3%	629	
Speak English "not well"	630	1.0%	241	
Speak English "not at all"	210	0.3%	109	
Speak other Indo-European languages	1,596	2.5%	574	
Speak English "very well" or "well"	1,399	2.2%	413	
Speak English "not well"	70	0.1%	60	
Speak English "not at all"	127	0.2%	181	
Speak Asian and Pacific Island languages	686	1.1%	144	
Speak English "very well" or "well"	627	1.0%	128	
Speak English "not well"	50	0.1%	45	
Speak English "not at all"	9	0.0%	14	
Speak other languages	73	0.1%	42	
Speak English "very well" or "well"	56	0.1%	42	
Speak English "not well"	18	0.0%	16	
Speak English "not at all"	0	0.0%	0	
65 years and over				
Speak only English	8,583	13.2%	601	
Speak Spanish	939	1.4%	263	
Speak English "very well" or "well"	701	1.1%	239	
Speak English "not well"	173	0.3%	89	
Speak English "not at all"	65	0.1%	46	
Speak other Indo-European languages	496	0.8%	120	
Speak English "very well" or "well"	337	0.5%	101	
Speak English "not well"	110	0.2%	78	
Speak English "not at all"	48	0.1%	51	
Speak Asian and Pacific Island languages	242	0.4%	121	
Speak English "very well" or "well"	52	0.1%	47	
Speak English "not well"	73	0.1%	57	
Speak English "not at all"	117	0.2%	94	
Speak other languages	46	0.1%	40	
Speak English "very well" or "well"	11	0.0%	19	
Speak English "not well"	35	0.1%	39	
Speak English "not at all"	0	0.0%	0	

Source: U.S. Census Bureau, 2010-2014 American Community Survey

Reliability: high medium low

May 18, 2017



ACS Population Summary

707 East St, Longwood, Florida, 32750
Ring: 3 mile radius

Prepared by Esri
Latitude: 28.69598
Longitude: -81.32970

	2010 - 2014 ACS Estimate	Percent	MOE(±)	Reliability
WORKERS AGE 16+ YEARS BY PLACE OF WORK				
Total	31,932	100.0%	1,391	
Worked in state and in county of residence	18,928	59.3%	1,068	
Worked in state and outside county of residence	12,802	40.1%	813	
Worked outside state of residence	202	0.6%	74	
WORKERS AGE 16+ YEARS BY MEANS OF TRANSPORTATION TO WORK				
Total	31,932	100.0%	1,391	
Drove alone	27,047	84.7%	1,302	
Carpooled	2,271	7.1%	349	
Public transportation (excluding taxicab)	172	0.5%	107	
Bus or trolley bus	146	0.5%	104	
Streetcar or trolley car	16	0.1%	25	
Subway or elevated	0	0.0%	0	
Railroad	10	0.0%	17	
Ferryboat	0	0.0%	0	
Taxicab	3	0.0%	14	
Motorcycle	52	0.2%	39	
Bicycle	155	0.5%	98	
Walked	283	0.9%	105	
Other means	338	1.1%	171	
Worked at home	1,611	5.0%	261	
WORKERS AGE 16+ YEARS (WHO DID NOT WORK FROM HOME) BY TRAVEL TIME TO WORK				
Total	30,321	100.0%	1,373	
Less than 5 minutes	410	1.4%	134	
5 to 9 minutes	1,643	5.4%	244	
10 to 14 minutes	3,713	12.2%	450	
15 to 19 minutes	5,386	17.8%	542	
20 to 24 minutes	5,473	18.1%	574	
25 to 29 minutes	2,302	7.6%	342	
30 to 34 minutes	5,081	16.8%	482	
35 to 39 minutes	975	3.2%	205	
40 to 44 minutes	1,502	5.0%	270	
45 to 59 minutes	2,550	8.4%	360	
60 to 89 minutes	724	2.4%	157	
90 or more minutes	561	1.9%	161	
Average Travel Time to Work (in minutes)	N/A		N/A	
FEMALES AGE 20-64 YEARS BY AGE OF OWN CHILDREN AND EMPLOYMENT STATUS				
Total	21,272	100.0%	958	
Own children under 6 years only	1,567	7.4%	258	
In labor force	1,209	5.7%	219	
Not in labor force	358	1.7%	139	
Own children under 6 years and 6 to 17 years	986	4.6%	212	
In labor force	608	2.9%	169	
Not in labor force	378	1.8%	134	
Own children 6 to 17 years only	3,943	18.5%	412	
In labor force	3,175	14.9%	385	
Not in labor force	767	3.6%	156	
No own children under 18 years	14,777	69.5%	845	
In labor force	11,106	52.2%	751	
Not in labor force	3,670	17.3%	463	

Source: U.S. Census Bureau, 2010-2014 American Community Survey

Reliability: high medium low

May 18, 2017



ACS Population Summary

707 East St, Longwood, Florida, 32750
Ring: 3 mile radius

Prepared by Esri
Latitude: 28.69598
Longitude: -81.32970

	2010 - 2014 ACS Estimate	Percent	MOE(±)	Reliability
CIVILIAN NONINSTITUTIONALIZED POPULATION BY AGE & TYPES OF HEALTH INSURANCE COVERAGE				
Total	68,186	100.0%	2,410	
Under 18 years:	13,744	20.2%	1,029	
One Type of Health Insurance:	11,594	17.0%	982	
Employer-Based Health Ins Only	5,939	8.7%	590	
Direct-Purchase Health Ins Only	1,083	1.6%	260	
Medicare Coverage Only	63	0.1%	61	
Medicaid Coverage Only	4,397	6.4%	771	
TRICARE/Military Hlth Cov Only	113	0.2%	63	
VA Health Care Only	0	0.0%	0	
2+ Types of Health Insurance	430	0.6%	117	
No Health Insurance Coverage	1,720	2.5%	361	
18 to 34 years:	16,072	23.6%	1,100	
One Type of Health Insurance:	9,934	14.6%	867	
Employer-Based Health Ins Only	7,388	10.8%	760	
Direct-Purchase Health Ins Only	1,035	1.5%	233	
Medicare Coverage Only	23	0.0%	29	
Medicaid Coverage Only	1,146	1.7%	265	
TRICARE/Military Hlth Cov Only	211	0.3%	140	
VA Health Care Only	132	0.2%	78	
2+ Types of Health Insurance	629	0.9%	167	
No Health Insurance Coverage	5,509	8.1%	647	
35 to 64 years:	28,247	41.4%	1,174	
One Type of Health Insurance:	19,633	28.8%	999	
Employer-Based Health Ins Only	15,387	22.6%	831	
Direct-Purchase Health Ins Only	1,824	2.7%	241	
Medicare Coverage Only	491	0.7%	176	
Medicaid Coverage Only	1,434	2.1%	513	
TRICARE/Military Hlth Cov Only	203	0.3%	76	
VA Health Care Only	293	0.4%	115	
2+ Types of Health Insurance	2,215	3.2%	289	
No Health Insurance Coverage	6,399	9.4%	713	
65+ years:	10,123	14.8%	631	
One Type of Health Insurance:	3,667	5.4%	418	
Employer-Based Health Ins Only	150	0.2%	58	
Direct-Purchase Health Ins Only	36	0.1%	81	
Medicare Coverage Only	3,481	5.1%	414	
TRICARE/Military Hlth Cov Only	0	0.0%	0	
VA Health Care Only	0	0.0%	0	
2+ Types of Health Insurance:	6,236	9.1%	515	
Employer-Based & Direct-Purchase Health Insurance	0	0.0%	0	
Employer-Based Health & Medicare Insurance	1,164	1.7%	194	
Direct-Purchase Health & Medicare Insurance	1,353	2.0%	232	
Medicare & Medicaid Coverage	1,034	1.5%	242	
Other Private Health Insurance Combos	0	0.0%	0	
Other Public Health Insurance Combos	366	0.5%	134	
Other Health Insurance Combinations	2,318	3.4%	307	
No Health Insurance Coverage	220	0.3%	108	

Source: U.S. Census Bureau, 2010-2014 American Community Survey

Reliability: high medium low

May 18, 2017



ACS Population Summary

707 East St, Longwood, Florida, 32750
Ring: 3 mile radius

Prepared by Esri
Latitude: 28.69598
Longitude: -81.32970

	2010 - 2014 ACS Estimate	Percent	MOE(±)	Reliability
POPULATION BY RATIO OF INCOME TO POVERTY LEVEL				
Total	68,115	100.0%	2,405	
Under .50	3,296	4.8%	611	
.50 to .99	5,024	7.4%	850	
1.00 to 1.24	4,098	6.0%	1,150	
1.25 to 1.49	3,370	4.9%	666	
1.50 to 1.84	4,174	6.1%	727	
1.85 to 1.99	2,199	3.2%	536	
2.00 and over	45,954	67.5%	1,925	
CIVILIAN POPULATION AGE 18 OR OLDER BY VETERAN STATUS				
Total	54,648	100.0%	1,884	
Veteran	5,308	9.7%	502	
Nonveteran	49,340	90.3%	1,789	
Male	26,684	48.8%	1,174	
Veteran	4,664	8.5%	433	
Nonveteran	22,020	40.3%	1,077	
Female	27,964	51.2%	1,107	
Veteran	644	1.2%	226	
Nonveteran	27,320	50.0%	1,087	
CIVILIAN VETERANS AGE 18 OR OLDER BY PERIOD OF MILITARY SERVICE				
Total	5,308	100.0%	502	
Gulf War (9/01 or later), no Gulf War (8/90 to 8/01), no Vietnam Era	494	9.3%	213	
Gulf War (9/01 or later) and Gulf War (8/90 to 8/01), no Vietnam Era	161	3.0%	94	
Gulf War (9/01 or later), and Gulf War (8/90 to 8/01), and Vietnam Era	0	0.0%	0	
Gulf War (8/90 to 8/01), no Vietnam Era	405	7.6%	150	
Gulf War (8/90 to 8/01) and Vietnam Era	64	1.2%	33	
Vietnam Era, no Korean War, no World War II	1,606	30.3%	251	
Vietnam Era and Korean War, no World War II	164	3.1%	50	
Vietnam Era and Korean War and World War II	108	2.0%	83	
Korean War, no Vietnam Era, no World War II	369	7.0%	114	
Korean War and World War II, no Vietnam Era	14	0.3%	15	
World War II, no Korean War, no Vietnam Era	353	6.7%	122	
Between Gulf War and Vietnam Era only	991	18.7%	224	
Between Vietnam Era and Korean War only	547	10.3%	131	
Between Korean War and World War II only	20	0.4%	20	
Pre-World War II only	12	0.2%	20	
HOUSEHOLDS BY POVERTY STATUS				
Total	23,356	100.0%	624	
Income in the past 12 months below poverty level	2,718	11.6%	313	
Married-couple family	566	2.4%	141	
Other family - male householder (no wife present)	106	0.5%	60	
Other family - female householder (no husband present)	659	2.8%	146	
Nonfamily household - male householder	667	2.9%	169	
Nonfamily household - female householder	721	3.1%	169	
Income in the past 12 months at or above poverty level	20,638	88.4%	622	
Married-couple family	10,802	46.2%	516	
Other family - male householder (no wife present)	941	4.0%	224	
Other family - female householder (no husband present)	2,419	10.4%	286	
Nonfamily household - male householder	2,757	11.8%	306	
Nonfamily household - female householder	3,719	15.9%	344	

Source: U.S. Census Bureau, 2010-2014 American Community Survey

Reliability: high medium low

May 18, 2017



ACS Population Summary

707 East St, Longwood, Florida, 32750
Ring: 3 mile radius

Prepared by Esri
Latitude: 28.69598
Longitude: -81.32970

	2010 - 2014 ACS Estimate	Percent	MOE(±)	Reliability
HOUSEHOLDS BY OTHER INCOME				
Social Security Income	7,305	31.3%	419	High
No Social Security Income	16,051	68.7%	596	High
Retirement Income	3,655	15.6%	311	High
No Retirement Income	19,701	84.4%	642	High
GROSS RENT AS A PERCENTAGE OF HOUSEHOLD INCOME IN THE PAST 12 MONTHS				
<10% of Income	140	2.2%	62	Medium
10-14.9% of Income	312	5.0%	122	Medium
15-19.9% of Income	632	10.1%	158	Medium
20-24.9% of Income	692	11.1%	157	Medium
25-29.9% of Income	820	13.1%	197	Medium
30-34.9% of Income	617	9.9%	175	Medium
35-39.9% of Income	510	8.2%	171	Medium
40-49.9% of Income	511	8.2%	126	Medium
50+% of Income	1,493	23.9%	264	High
Gross Rent % Inc Not Computed	508	8.1%	153	Medium
HOUSEHOLDS BY PUBLIC ASSISTANCE INCOME IN THE PAST 12 MONTHS				
Total	23,356	100.0%	624	High
With public assistance income	496	2.1%	145	Medium
No public assistance income	22,861	97.9%	623	High
HOUSEHOLDS BY FOOD STAMPS/SNAP STATUS				
Total	23,356	100.0%	624	High
With Food Stamps/SNAP	2,654	11.4%	315	High
With No Food Stamps/SNAP	20,702	88.6%	616	High
HOUSEHOLDS BY DISABILITY STATUS				
Total	23,356	100.0%	624	High
With 1+ Persons w/Disability	5,349	22.9%	391	High
With No Person w/Disability	18,007	77.1%	650	High

Data Note: N/A means not available. Population by Ratio of Income to Poverty Level represents persons for whom poverty status is determined. Household income represents income in 2014, adjusted for inflation.

2010-2014 ACS Estimate: The American Community Survey (ACS) replaces census sample data. Esri is releasing the 2010-2014 ACS estimates, five-year period data collected monthly from January 1, 2010 through December 31, 2014. Although the ACS includes many of the subjects previously covered by the decennial census sample, there are significant differences between the two surveys including fundamental differences in survey design and residency rules.

Margin of error (MOE): The MOE is a measure of the variability of the estimate due to sampling error. MOEs enable the data user to measure the range of uncertainty for each estimate with 90 percent confidence. The range of uncertainty is called the confidence interval, and it is calculated by taking the estimate +/- the MOE. For example, if the ACS reports an estimate of 100 with an MOE of +/- 20, then you can be 90 percent certain the value for the whole population falls between 80 and 120.

Reliability: These symbols represent threshold values that Esri has established from the Coefficients of Variation (CV) to designate the usability of the estimates. The CV measures the amount of sampling error relative to the size of the estimate, expressed as a percentage.

- High Reliability: Small CVs (less than or equal to 12 percent) are flagged green to indicate that the sampling error is small relative to the estimate and the estimate is reasonably reliable.
- Medium Reliability: Estimates with CVs between 12 and 40 are flagged yellow-use with caution.
- Low Reliability: Large CVs (over 40 percent) are flagged red to indicate that the sampling error is large relative to the estimate. The estimate is considered very unreliable.

Source: U.S. Census Bureau, 2010-2014 American Community Survey

Reliability: High medium low

May 18, 2017



ACS Population Summary

707 East St, Longwood, Florida, 32750
Ring: 5 mile radius

Prepared by Esri
Latitude: 28.69598
Longitude: -81.32970

	2010 - 2014 ACS Estimate	Percent	MOE(±)	Reliability
TOTALS				
Total Population	184,078		3,999	■■■
Total Households	66,908		1,140	■■■
Total Housing Units	82,272		1,229	■■■
POPULATION AGE 3+ YEARS BY SCHOOL ENROLLMENT				
Total	179,002	100.0%	3,874	■■■
Enrolled in school	45,706	25.5%	1,779	■■■
Enrolled in nursery school, preschool	2,535	1.4%	341	■■■
Public school	1,180	0.7%	253	■
Private school	1,355	0.8%	235	■■■
Enrolled in kindergarten	2,027	1.1%	333	■■■
Public school	1,473	0.8%	249	■■■
Private school	554	0.3%	221	■
Enrolled in grade 1 to grade 4	7,515	4.2%	632	■■■
Public school	6,527	3.6%	602	■■■
Private school	988	0.6%	202	■
Enrolled in grade 5 to grade 8	8,654	4.8%	708	■■■
Public school	7,669	4.3%	679	■■■
Private school	985	0.6%	205	■
Enrolled in grade 9 to grade 12	9,534	5.3%	677	■■■
Public school	8,551	4.8%	648	■■■
Private school	983	0.5%	201	■
Enrolled in college undergraduate years	13,116	7.3%	977	■■■
Public school	10,775	6.0%	870	■■■
Private school	2,341	1.3%	410	■■■
Enrolled in graduate or professional school	2,326	1.3%	370	■■■
Public school	1,307	0.7%	258	■■■
Private school	1,018	0.6%	267	■
Not enrolled in school	133,296	74.5%	2,526	■■■
POPULATION AGE 65+ BY RELATIONSHIP AND HOUSEHOLD TYPE				
Total	27,214	100.0%	1,040	■■■
Living in Households	26,392	97.0%	1,015	■■■
Living in Family Households	18,804	69.1%	954	■■■
Householder	8,608	31.6%	462	■■■
Spouse	5,674	20.8%	356	■■■
Parent	2,199	8.1%	439	■
Parent-in-law	1,362	5.0%	350	■
Other Relative	819	3.0%	258	■
Nonrelative	143	0.5%	78	■
Living in Nonfamily Households	7,588	27.9%	531	■■■
Householder	7,023	25.8%	472	■■■
Nonrelative	565	2.1%	2	■
Living in Group Quarters	822	3.0%	241	■



ACS Population Summary

707 East St, Longwood, Florida, 32750
Ring: 5 mile radius

Prepared by Esri
Latitude: 28.69598
Longitude: -81.32970

	2010 - 2014 ACS Estimate	Percent	MOE(±)	Reliability
HOUSEHOLDS BY TYPE AND SIZE AND AGE				
Family Households	42,409	63.4%	1,015	
2-Person	20,999	31.4%	801	
3-Person	9,419	14.1%	601	
4-Person	8,305	12.4%	547	
5-Person	2,653	4.0%	326	
6-Person	729	1.1%	162	
7+ Person	304	0.5%	90	
Nonfamily Households	24,499	36.6%	914	
1-Person	20,960	31.3%	857	
2-Person	3,054	4.6%	365	
3-Person	315	0.5%	83	
4-Person	161	0.2%	95	
5-Person	9	0.0%	27	
6-Person	0	0.0%	0	
7+ Person	0	0.0%	0	
HOUSEHOLDS BY PRESENCE OF PEOPLE UNDER 18 YEARS BY HOUSEHOLD TYPE				
Households with one or more people under 18 years	17,425	26.0%	743	
Family households	17,220	25.7%	735	
Married-couple family	11,685	17.5%	609	
Male householder, no wife present	1,088	1.6%	236	
Female householder, no husband present	4,447	6.6%	433	
Nonfamily households	205	0.3%	117	
Households with no people under 18 years	49,483	74.0%	1,081	
Married-couple family	20,554	30.7%	781	
Other family	4,636	6.9%	415	
Nonfamily households	24,294	36.3%	907	
HOUSEHOLDS BY PRESENCE OF PEOPLE 65 YEARS AND OVER, HOUSEHOLD SIZE AND HOUSEHOLD TYPE				
Households with Pop 65+	17,920	26.8%	648	
1-Person	6,687	10.0%	466	
2+ Person Family	10,791	16.1%	521	
2+ Person Nonfamily	442	0.7%	126	
Households with No Pop 65+	48,988	73.2%	1,109	
1-Person	14,272	21.3%	746	
2+ Person Family	31,618	47.3%	962	
2+ Person Nonfamily	3,098	4.6%	364	

Source: U.S. Census Bureau, 2010-2014 American Community Survey

Reliability: high medium low

May 18, 2017



ACS Population Summary

707 East St, Longwood, Florida, 32750
Ring: 5 mile radius

Prepared by Esri
Latitude: 28.69598
Longitude: -81.32970

	2010 - 2014 ACS Estimate	Percent	MOE(±)	Reliability
POPULATION AGE 5+ YEARS BY LANGUAGE SPOKEN AT HOME AND ABILITY TO SPEAK ENGLISH				
Total	174,910	100.0%	3,763	
5 to 17 years				
Speak only English	22,266	12.7%	1,222	
Speak Spanish	3,717	2.1%	646	
Speak English "very well" or "well"	3,583	2.0%	641	
Speak English "not well"	134	0.1%	88	
Speak English "not at all"	0	0.0%	0	
Speak other Indo-European languages	758	0.4%	205	
Speak English "very well" or "well"	746	0.4%	195	
Speak English "not well"	12	0.0%	18	
Speak English "not at all"	0	0.0%	0	
Speak Asian and Pacific Island languages	399	0.2%	121	
Speak English "very well" or "well"	382	0.2%	121	
Speak English "not well"	17	0.0%	30	
Speak English "not at all"	0	0.0%	0	
Speak other languages	45	0.0%	45	
Speak English "very well" or "well"	15	0.0%	24	
Speak English "not well"	30	0.0%	44	
Speak English "not at all"	0	0.0%	0	
18 to 64 years				
Speak only English	96,950	55.4%	2,594	
Speak Spanish	16,741	9.6%	1,433	
Speak English "very well" or "well"	14,544	8.3%	1,268	
Speak English "not well"	1,680	1.0%	367	
Speak English "not at all"	517	0.3%	234	
Speak other Indo-European languages	4,729	2.7%	840	
Speak English "very well" or "well"	4,379	2.5%	678	
Speak English "not well"	170	0.1%	111	
Speak English "not at all"	180	0.1%	200	
Speak Asian and Pacific Island languages	1,793	1.0%	278	
Speak English "very well" or "well"	1,694	1.0%	263	
Speak English "not well"	83	0.0%	45	
Speak English "not at all"	16	0.0%	15	
Speak other languages	298	0.2%	140	
Speak English "very well" or "well"	263	0.2%	136	
Speak English "not well"	35	0.0%	33	
Speak English "not at all"	0	0.0%	0	
65 years and over				
Speak only English	23,044	13.2%	954	
Speak Spanish	2,550	1.5%	391	
Speak English "very well" or "well"	1,754	1.0%	320	
Speak English "not well"	699	0.4%	216	
Speak English "not at all"	97	0.1%	56	
Speak other Indo-European languages	1,122	0.6%	262	
Speak English "very well" or "well"	772	0.4%	144	
Speak English "not well"	261	0.1%	189	
Speak English "not at all"	88	0.1%	81	
Speak Asian and Pacific Island languages	416	0.2%	160	
Speak English "very well" or "well"	223	0.1%	112	
Speak English "not well"	76	0.0%	62	
Speak English "not at all"	117	0.1%	94	
Speak other languages	83	0.0%	59	
Speak English "very well" or "well"	43	0.0%	39	
Speak English "not well"	40	0.0%	45	
Speak English "not at all"	0	0.0%	0	

Source: U.S. Census Bureau, 2010-2014 American Community Survey

Reliability: high medium low

May 18, 2017



ACS Population Summary

707 East St, Longwood, Florida, 32750
Ring: 5 mile radius

Prepared by Esri
Latitude: 28.69598
Longitude: -81.32970

	2010 - 2014 ACS Estimate	Percent	MOE(±)	Reliability
WORKERS AGE 16+ YEARS BY PLACE OF WORK				
Total	88,969	100.0%	2,376	
Worked in state and in county of residence	50,942	57.3%	1,805	
Worked in state and outside county of residence	37,194	41.8%	1,490	
Worked outside state of residence	833	0.9%	195	
WORKERS AGE 16+ YEARS BY MEANS OF TRANSPORTATION TO WORK				
Total	88,969	100.0%	2,376	
Drove alone	74,530	83.8%	2,204	
Carpooled	6,150	6.9%	650	
Public transportation (excluding taxicab)	450	0.5%	133	
Bus or trolley bus	415	0.5%	131	
Streetcar or trolley car	16	0.0%	25	
Subway or elevated	0	0.0%	0	
Railroad	19	0.0%	18	
Ferryboat	0	0.0%	0	
Taxicab	34	0.0%	31	
Motorcycle	196	0.2%	79	
Bicycle	493	0.6%	176	
Walked	1,011	1.1%	275	
Other means	1,018	1.1%	336	
Worked at home	5,088	5.7%	514	
WORKERS AGE 16+ YEARS (WHO DID NOT WORK FROM HOME) BY TRAVEL TIME TO WORK				
Total	83,881	100.0%	2,330	
Less than 5 minutes	990	1.2%	225	
5 to 9 minutes	4,974	5.9%	529	
10 to 14 minutes	11,699	13.9%	915	
15 to 19 minutes	14,713	17.5%	918	
20 to 24 minutes	13,853	16.5%	889	
25 to 29 minutes	6,653	7.9%	595	
30 to 34 minutes	13,587	16.2%	856	
35 to 39 minutes	2,980	3.6%	429	
40 to 44 minutes	3,410	4.1%	410	
45 to 59 minutes	6,786	8.1%	641	
60 to 89 minutes	2,593	3.1%	349	
90 or more minutes	1,643	2.0%	295	
Average Travel Time to Work (in minutes)	N/A		N/A	
FEMALES AGE 20-64 YEARS BY AGE OF OWN CHILDREN AND EMPLOYMENT STATUS				
Total	59,156	100.0%	1,718	
Own children under 6 years only	3,915	6.6%	460	
In labor force	2,968	5.0%	401	
Not in labor force	947	1.6%	230	
Own children under 6 years and 6 to 17 years	2,595	4.4%	306	
In labor force	1,694	2.9%	254	
Not in labor force	901	1.5%	177	
Own children 6 to 17 years only	10,528	17.8%	649	
In labor force	8,235	13.9%	596	
Not in labor force	2,293	3.9%	302	
No own children under 18 years	42,118	71.2%	1,580	
In labor force	31,552	53.3%	1,353	
Not in labor force	10,566	17.9%	866	

Source: U.S. Census Bureau, 2010-2014 American Community Survey

Reliability: high medium low

May 18, 2017



ACS Population Summary

707 East St, Longwood, Florida, 32750
Ring: 5 mile radius

Prepared by Esri
Latitude: 28.69598
Longitude: -81.32970

	2010 - 2014 ACS Estimate	Percent	MOE(±)	Reliability
CIVILIAN NONINSTITUTIONALIZED POPULATION BY AGE & TYPES OF HEALTH INSURANCE COVERAGE				
Total	182,488	100.0%	3,985	
Under 18 years:	36,260	19.9%	1,669	
One Type of Health Insurance:	30,367	16.6%	1,554	
Employer-Based Health Ins Only	18,067	9.9%	1,071	
Direct-Purchase Health Ins Only	2,905	1.6%	438	
Medicare Coverage Only	94	0.1%	81	
Medicaid Coverage Only	8,970	4.9%	1,102	
TRICARE/Military Hlth Cov Only	330	0.2%	163	
VA Health Care Only	0	0.0%	0	
2+ Types of Health Insurance	1,414	0.8%	331	
No Health Insurance Coverage	4,479	2.5%	689	
18 to 34 years:	40,924	22.4%	1,834	
One Type of Health Insurance:	26,543	14.5%	1,412	
Employer-Based Health Ins Only	20,542	11.3%	1,246	
Direct-Purchase Health Ins Only	3,087	1.7%	439	
Medicare Coverage Only	60	0.0%	63	
Medicaid Coverage Only	2,165	1.2%	381	
TRICARE/Military Hlth Cov Only	334	0.2%	166	
VA Health Care Only	355	0.2%	196	
2+ Types of Health Insurance	1,757	1.0%	457	
No Health Insurance Coverage	12,624	6.9%	1,020	
35 to 64 years:	78,544	43.0%	2,088	
One Type of Health Insurance:	57,384	31.4%	1,786	
Employer-Based Health Ins Only	45,764	25.1%	1,591	
Direct-Purchase Health Ins Only	6,351	3.5%	587	
Medicare Coverage Only	1,124	0.6%	246	
Medicaid Coverage Only	2,900	1.6%	604	
TRICARE/Military Hlth Cov Only	542	0.3%	129	
VA Health Care Only	703	0.4%	213	
2+ Types of Health Insurance	5,988	3.3%	587	
No Health Insurance Coverage	15,172	8.3%	1,109	
65+ years:	26,761	14.7%	1,030	
One Type of Health Insurance:	9,927	5.4%	711	
Employer-Based Health Ins Only	469	0.3%	116	
Direct-Purchase Health Ins Only	129	0.1%	132	
Medicare Coverage Only	9,327	5.1%	692	
TRICARE/Military Hlth Cov Only	0	0.0%	0	
VA Health Care Only	3	0.0%	9	
2+ Types of Health Insurance:	16,407	9.0%	806	
Employer-Based & Direct-Purchase Health Insurance	11	0.0%	18	
Employer-Based Health & Medicare Insurance	3,547	1.9%	346	
Direct-Purchase Health & Medicare Insurance	4,287	2.3%	412	
Medicare & Medicaid Coverage	1,995	1.1%	350	
Other Private Health Insurance Combos	16	0.0%	20	
Other Public Health Insurance Combos	820	0.4%	233	
Other Health Insurance Combinations	5,731	3.1%	475	
No Health Insurance Coverage	428	0.2%	191	

Source: U.S. Census Bureau, 2010-2014 American Community Survey

Reliability: high medium low

May 18, 2017



ACS Population Summary

707 East St, Longwood, Florida, 32750
Ring: 5 mile radius

Prepared by Esri
Latitude: 28.69598
Longitude: -81.32970

	2010 - 2014 ACS Estimate	Percent	MOE(±)	Reliability
POPULATION BY RATIO OF INCOME TO POVERTY LEVEL				
Total	182,125	100.0%	3,977	
Under .50	7,620	4.2%	892	
.50 to .99	10,895	6.0%	1,366	
1.00 to 1.24	8,075	4.4%	1,327	
1.25 to 1.49	7,502	4.1%	990	
1.50 to 1.84	11,149	6.1%	1,286	
1.85 to 1.99	4,965	2.7%	930	
2.00 and over	131,919	72.4%	3,440	
CIVILIAN POPULATION AGE 18 OR OLDER BY VETERAN STATUS				
Total	147,564	100.0%	3,148	
Veteran	13,673	9.3%	857	
Nonveteran	133,891	90.7%	2,989	
Male	70,606	47.8%	1,945	
Veteran	12,534	8.5%	803	
Nonveteran	58,072	39.4%	1,750	
Female	76,958	52.2%	1,940	
Veteran	1,139	0.8%	274	
Nonveteran	75,819	51.4%	1,926	
CIVILIAN VETERANS AGE 18 OR OLDER BY PERIOD OF MILITARY SERVICE				
Total	13,673	100.0%	857	
Gulf War (9/01 or later), no Gulf War (8/90 to 8/01), no Vietnam Era	1,486	10.9%	436	
Gulf War (9/01 or later) and Gulf War (8/90 to 8/01), no Vietnam Era	424	3.1%	132	
Gulf War (9/01 or later), and Gulf War (8/90 to 8/01), and Vietnam Era	23	0.2%	23	
Gulf War (8/90 to 8/01), no Vietnam Era	1,103	8.1%	233	
Gulf War (8/90 to 8/01) and Vietnam Era	135	1.0%	66	
Vietnam Era, no Korean War, no World War II	4,342	31.8%	403	
Vietnam Era and Korean War, no World War II	315	2.3%	105	
Vietnam Era and Korean War and World War II	161	1.2%	90	
Korean War, no Vietnam Era, no World War II	1,020	7.5%	189	
Korean War and World War II, no Vietnam Era	44	0.3%	23	
World War II, no Korean War, no Vietnam Era	927	6.8%	186	
Between Gulf War and Vietnam Era only	2,203	16.1%	353	
Between Vietnam Era and Korean War only	1,370	10.0%	243	
Between Korean War and World War II only	109	0.8%	54	
Pre-World War II only	12	0.1%	20	
HOUSEHOLDS BY POVERTY STATUS				
Total	66,908	100.0%	1,140	
Income in the past 12 months below poverty level	6,265	9.4%	497	
Married-couple family	1,220	1.8%	224	
Other family - male householder (no wife present)	207	0.3%	89	
Other family - female householder (no husband present)	1,424	2.1%	218	
Nonfamily household - male householder	1,541	2.3%	284	
Nonfamily household - female householder	1,873	2.8%	261	
Income in the past 12 months at or above poverty level	60,643	90.6%	1,135	
Married-couple family	31,018	46.4%	907	
Other family - male householder (no wife present)	2,138	3.2%	332	
Other family - female householder (no husband present)	6,402	9.6%	508	
Nonfamily household - male householder	8,873	13.3%	596	
Nonfamily household - female householder	12,212	18.3%	670	

Source: U.S. Census Bureau, 2010-2014 American Community Survey

Reliability: high medium low

May 18, 2017



ACS Population Summary

707 East St, Longwood, Florida, 32750
Ring: 5 mile radius

Prepared by Esri
Latitude: 28.69598
Longitude: -81.32970

	2010 - 2014 ACS Estimate	Percent	MOE(±)	Reliability
HOUSEHOLDS BY OTHER INCOME				
Social Security Income	19,464	29.1%	693	High
No Social Security Income	47,445	70.9%	1,112	High
Retirement Income	10,374	15.5%	529	High
No Retirement Income	56,535	84.5%	1,160	High
GROSS RENT AS A PERCENTAGE OF HOUSEHOLD INCOME IN THE PAST 12 MONTHS				
<10% of Income	597	2.9%	191	Medium
10-14.9% of Income	1,089	5.3%	225	Medium
15-19.9% of Income	2,366	11.5%	312	High
20-24.9% of Income	2,919	14.2%	349	High
25-29.9% of Income	2,751	13.4%	350	High
30-34.9% of Income	2,023	9.8%	326	High
35-39.9% of Income	1,604	7.8%	262	High
40-49.9% of Income	1,554	7.6%	230	High
50+% of Income	4,384	21.3%	431	High
Gross Rent % Inc Not Computed	1,279	6.2%	249	High
HOUSEHOLDS BY PUBLIC ASSISTANCE INCOME IN THE PAST 12 MONTHS				
Total	66,908	100.0%	1,140	High
With public assistance income	1,196	1.8%	225	High
No public assistance income	65,713	98.2%	1,141	High
HOUSEHOLDS BY FOOD STAMPS/SNAP STATUS				
Total	66,908	100.0%	1,140	High
With Food Stamps/SNAP	5,236	7.8%	451	High
With No Food Stamps/SNAP	61,673	92.2%	1,134	High
HOUSEHOLDS BY DISABILITY STATUS				
Total	66,908	100.0%	1,140	High
With 1+ Persons w/Disability	13,266	19.8%	643	High
With No Person w/Disability	53,642	80.2%	1,184	High

Data Note: N/A means not available. Population by Ratio of Income to Poverty Level represents persons for whom poverty status is determined. Household income represents income in 2014, adjusted for inflation.

2010-2014 ACS Estimate: The American Community Survey (ACS) replaces census sample data. Esri is releasing the 2010-2014 ACS estimates, five-year period data collected monthly from January 1, 2010 through December 31, 2014. Although the ACS includes many of the subjects previously covered by the decennial census sample, there are significant differences between the two surveys including fundamental differences in survey design and residency rules.

Margin of error (MOE): The MOE is a measure of the variability of the estimate due to sampling error. MOEs enable the data user to measure the range of uncertainty for each estimate with 90 percent confidence. The range of uncertainty is called the confidence interval, and it is calculated by taking the estimate +/- the MOE. For example, if the ACS reports an estimate of 100 with an MOE of +/- 20, then you can be 90 percent certain the value for the whole population falls between 80 and 120.

Reliability: These symbols represent threshold values that Esri has established from the Coefficients of Variation (CV) to designate the usability of the estimates. The CV measures the amount of sampling error relative to the size of the estimate, expressed as a percentage.

- High Reliability: Small CVs (less than or equal to 12 percent) are flagged green to indicate that the sampling error is small relative to the estimate and the estimate is reasonably reliable.
- Medium Reliability: Estimates with CVs between 12 and 40 are flagged yellow-use with caution.
- Low Reliability: Large CVs (over 40 percent) are flagged red to indicate that the sampling error is large relative to the estimate. The estimate is considered very unreliable.

Source: U.S. Census Bureau, 2010-2014 American Community Survey

Reliability: High medium low

May 18, 2017



Housing Profile

707 East St, Longwood, Florida, 32750
Ring: 1 mile radius

Prepared by Esri
Latitude: 28.69598
Longitude: -81.32970

Population		Households	
2010 Total Population	10,383	2016 Median Household Income	\$42,685
2016 Total Population	10,919	2021 Median Household Income	\$47,015
2021 Total Population	11,432	2016-2021 Annual Rate	1.95%
2016-2021 Annual Rate	0.92%		

Housing Units by Occupancy Status and Tenure	Census 2010		2016		2021	
	Number	Percent	Number	Percent	Number	Percent
Total Housing Units	4,985	100.0%	5,137	100.0%	5,357	100.0%
Occupied	4,434	88.9%	4,575	89.1%	4,770	89.0%
Owner	2,412	48.4%	2,220	43.2%	2,265	42.3%
Renter	2,022	40.6%	2,355	45.8%	2,505	46.8%
Vacant	551	11.1%	563	11.0%	587	11.0%

Owner Occupied Housing Units by Value	2016		2021	
	Number	Percent	Number	Percent
Total	2,221	100.0%	2,264	100.0%
<\$50,000	520	23.4%	396	17.5%
\$50,000-\$99,999	410	18.5%	351	15.5%
\$100,000-\$149,999	382	17.2%	354	15.6%
\$150,000-\$199,999	365	16.4%	337	14.9%
\$200,000-\$249,999	222	10.0%	345	15.2%
\$250,000-\$299,999	101	4.5%	179	7.9%
\$300,000-\$399,999	97	4.4%	130	5.7%
\$400,000-\$499,999	39	1.8%	62	2.7%
\$500,000-\$749,999	58	2.6%	70	3.1%
\$750,000-\$999,999	8	0.4%	14	0.6%
\$1,000,000+	19	0.9%	26	1.1%
Median Value	\$123,626		\$154,599	
Average Value	\$158,307		\$189,134	

Census 2010 Housing Units	Number	Percent
Total	4,985	100.0%
In Urbanized Areas	4,985	100.0%
In Urban Clusters	0	0.0%
Rural Housing Units	0	0.0%



Housing Profile

707 East St, Longwood, Florida, 32750
Ring: 1 mile radius

Prepared by Esri
Latitude: 28.69598
Longitude: -81.32970

Census 2010 Owner Occupied Housing Units by Mortgage Status	Number	Percent
Total	2,412	100.0%
Owned with a Mortgage/Loan	1,664	69.0%
Owned Free and Clear	748	31.0%

Census 2010 Vacant Housing Units by Status	Number	Percent
Total	551	100.0%
For Rent	242	43.9%
Rented- Not Occupied	9	1.6%
For Sale Only	114	20.7%
Sold - Not Occupied	7	1.3%
Seasonal/Recreational/Occasional Use	38	6.9%
For Migrant Workers	0	0.0%
Other Vacant	119	21.6%

Census 2010 Occupied Housing Units by Age of Householder and Home Ownership	Occupied Units	Owner Occupied Units Number	% of Occupied
Total	4,434	2,412	54.4%
15-24	210	27	12.9%
25-34	742	215	29.0%
35-44	758	333	43.9%
45-54	939	554	59.0%
55-64	761	535	70.3%
65-74	495	386	78.0%
75-84	376	275	73.1%
85+	153	87	56.9%

Census 2010 Occupied Housing Units by Race/Ethnicity of Householder and Home Ownership	Occupied Units	Owner Occupied Units Number	% of Occupied
Total	4,434	2,413	54.4%
White Alone	3,745	2,162	57.7%
Black/African American	323	92	28.5%
American Indian/Alaska	17	8	47.1%
Asian Alone	85	53	62.4%
Pacific Islander Alone	1	1	100.0%
Other Race Alone	158	60	38.0%
Two or More Races	105	37	35.2%
Hispanic Origin	695	297	42.7%

Census 2010 Occupied Housing Units by Size and Home Ownership	Occupied Units	Owner Occupied Units Number	% of Occupied
Total	4,434	2,413	54.4%
1-Person	1,341	703	52.4%
2-Person	1,468	888	60.5%
3-Person	766	384	50.1%
4-Person	503	264	52.5%
5-Person	231	116	50.2%
6-Person	87	49	56.3%
7+ Person	38	9	23.7%

Data Note: Persons of Hispanic Origin may be of any race.
Source: U.S. Census Bureau, Census 2010 Summary File 1.

May 18, 2017



Housing Profile

707 East St, Longwood, Florida, 32750
Ring: 3 mile radius

Prepared by Esri
Latitude: 28.69598
Longitude: -81.32970

Population		Households	
2010 Total Population	67,163	2016 Median Household Income	\$51,835
2016 Total Population	70,864	2021 Median Household Income	\$58,938
2021 Total Population	74,424	2016-2021 Annual Rate	2.60%
2016-2021 Annual Rate	0.99%		

Housing Units by Occupancy Status and Tenure	Census 2010		2016		2021	
	Number	Percent	Number	Percent	Number	Percent
Total Housing Units	28,243	100.0%	29,176	100.0%	30,418	100.0%
Occupied	26,010	92.1%	26,827	91.9%	27,985	92.0%
Owner	18,703	66.2%	18,045	61.8%	18,716	61.5%
Renter	7,307	25.9%	8,782	30.1%	9,269	30.5%
Vacant	2,233	7.9%	2,348	8.0%	2,433	8.0%

Owner Occupied Housing Units by Value	2016		2021	
	Number	Percent	Number	Percent
Total	18,047	100.0%	18,715	100.0%
<\$50,000	1,762	9.8%	1,204	6.4%
\$50,000-\$99,999	2,315	12.8%	1,563	8.4%
\$100,000-\$149,999	3,097	17.2%	2,534	13.5%
\$150,000-\$199,999	3,296	18.3%	3,218	17.2%
\$200,000-\$249,999	2,747	15.2%	3,829	20.5%
\$250,000-\$299,999	1,687	9.3%	2,702	14.4%
\$300,000-\$399,999	1,853	10.3%	2,071	11.1%
\$400,000-\$499,999	697	3.9%	847	4.5%
\$500,000-\$749,999	365	2.0%	448	2.4%
\$750,000-\$999,999	129	0.7%	177	0.9%
\$1,000,000+	99	0.5%	122	0.7%
Median Value	\$178,057		\$210,949	
Average Value	\$204,497		\$231,107	

Census 2010 Housing Units	Number	Percent
Total	28,243	100.0%
In Urbanized Areas	28,243	100.0%
In Urban Clusters	0	0.0%
Rural Housing Units	0	0.0%



Housing Profile

707 East St, Longwood, Florida, 32750
Ring: 3 mile radius

Prepared by Esri
Latitude: 28.69598
Longitude: -81.32970

Census 2010 Owner Occupied Housing Units by Mortgage Status	Number	Percent
Total	18,703	100.0%
Owned with a Mortgage/Loan	14,460	77.3%
Owned Free and Clear	4,243	22.7%

Census 2010 Vacant Housing Units by Status	Number	Percent
Total	2,233	100.0%
For Rent	801	35.9%
Rented- Not Occupied	45	2.0%
For Sale Only	556	24.9%
Sold - Not Occupied	64	2.9%
Seasonal/Recreational/Occasional Use	167	7.5%
For Migrant Workers	1	0.0%
Other Vacant	613	27.5%

Census 2010 Occupied Housing Units by Age of Householder and Home Ownership	Occupied Units	Owner Occupied Units	
		Number	% of Occupied
Total	26,010	18,702	71.9%
15-24	790	176	22.3%
25-34	3,434	1,624	47.3%
35-44	4,765	3,137	65.8%
45-54	6,151	4,699	76.4%
55-64	5,121	4,288	83.7%
65-74	3,062	2,682	87.6%
75-84	1,912	1,600	83.7%
85+	775	496	64.0%

Census 2010 Occupied Housing Units by Race/Ethnicity of Householder and Home Ownership	Occupied Units	Owner Occupied Units	
		Number	% of Occupied
Total	26,010	18,703	71.9%
White Alone	21,975	16,300	74.2%
Black/African American	2,103	1,151	54.7%
American Indian/Alaska	95	59	62.1%
Asian Alone	689	576	83.6%
Pacific Islander Alone	6	4	66.7%
Other Race Alone	677	345	51.0%
Two or More Races	465	268	57.6%
Hispanic Origin	3,635	2,214	60.9%

Census 2010 Occupied Housing Units by Size and Home Ownership	Occupied Units	Owner Occupied Units	
		Number	% of Occupied
Total	26,009	18,702	71.9%
1-Person	6,340	4,214	66.5%
2-Person	8,788	6,796	77.3%
3-Person	4,889	3,446	70.5%
4-Person	3,603	2,651	73.6%
5-Person	1,566	1,072	68.5%
6-Person	558	358	64.2%
7+ Person	265	165	62.3%

Data Note: Persons of Hispanic Origin may be of any race.
Source: U.S. Census Bureau, Census 2010 Summary File 1.



Housing Profile

707 East St, Longwood, Florida, 32750
Ring: 5 mile radius

Prepared by Esri
Latitude: 28.69598
Longitude: -81.32970

Population		Households	
2010 Total Population	182,373	2016 Median Household Income	\$55,119
2016 Total Population	192,555	2021 Median Household Income	\$62,701
2021 Total Population	202,358	2016-2021 Annual Rate	2.61%
2016-2021 Annual Rate	1.00%		

Housing Units by Occupancy Status and Tenure	Census 2010		2016		2021	
	Number	Percent	Number	Percent	Number	Percent
Total Housing Units	81,999	100.0%	85,045	100.0%	88,743	100.0%
Occupied	74,598	91.0%	77,021	90.6%	80,411	90.6%
Owner	49,195	60.0%	47,351	55.7%	49,110	55.3%
Renter	25,403	31.0%	29,670	34.9%	31,301	35.3%
Vacant	7,401	9.0%	8,024	9.4%	8,332	9.4%

Owner Occupied Housing Units by Value	2016		2021	
	Number	Percent	Number	Percent
Total	47,344	100.0%	49,105	100.0%
<\$50,000	3,230	6.8%	2,016	4.1%
\$50,000-\$99,999	5,117	10.8%	3,305	6.7%
\$100,000-\$149,999	7,103	15.0%	5,692	11.6%
\$150,000-\$199,999	7,526	15.9%	7,268	14.8%
\$200,000-\$249,999	6,850	14.5%	9,316	19.0%
\$250,000-\$299,999	4,449	9.4%	6,924	14.1%
\$300,000-\$399,999	6,716	14.2%	7,242	14.7%
\$400,000-\$499,999	2,826	6.0%	3,230	6.6%
\$500,000-\$749,999	2,200	4.6%	2,561	5.2%
\$750,000-\$999,999	712	1.5%	888	1.8%
\$1,000,000+	615	1.3%	663	1.4%
Median Value	\$205,080		\$233,660	
Average Value	\$249,730		\$274,442	

Census 2010 Housing Units	Number	Percent
Total	81,999	100.0%
In Urbanized Areas	81,448	99.3%
In Urban Clusters	0	0.0%
Rural Housing Units	551	0.7%



Housing Profile

707 East St, Longwood, Florida, 32750
Ring: 5 mile radius

Prepared by Esri
Latitude: 28.69598
Longitude: -81.32970

Census 2010 Owner Occupied Housing Units by Mortgage Status	Number	Percent
Total	49,195	100.0%
Owned with a Mortgage/Loan	37,828	76.9%
Owned Free and Clear	11,367	23.1%

Census 2010 Vacant Housing Units by Status	Number	Percent
Total	7,401	100.0%
For Rent	3,281	44.3%
Rented- Not Occupied	125	1.7%
For Sale Only	1,491	20.1%
Sold - Not Occupied	195	2.6%
Seasonal/Recreational/Occasional Use	590	8.0%
For Migrant Workers	3	0.0%
Other Vacant	1,806	24.4%

Census 2010 Occupied Housing Units by Age of Householder and Home Ownership	Occupied Units	Owner Occupied Units	
		Number	% of Occupied
Total	74,597	49,194	65.9%
15-24	3,190	449	14.1%
25-34	11,162	4,163	37.3%
35-44	13,296	7,984	60.0%
45-54	16,770	12,086	72.1%
55-64	14,105	11,383	80.7%
65-74	8,393	7,135	85.0%
75-84	5,369	4,456	83.0%
85+	2,312	1,538	66.5%

Census 2010 Occupied Housing Units by Race/Ethnicity of Householder and Home Ownership	Occupied Units	Owner Occupied Units	
		Number	% of Occupied
Total	74,598	49,195	65.9%
White Alone	62,993	43,829	69.6%
Black/African American	5,776	2,315	40.1%
American Indian/Alaska	251	134	53.4%
Asian Alone	1,974	1,395	70.7%
Pacific Islander Alone	39	18	46.2%
Other Race Alone	2,170	822	37.9%
Two or More Races	1,395	682	48.9%
Hispanic Origin	10,610	5,447	51.3%

Census 2010 Occupied Housing Units by Size and Home Ownership	Occupied Units	Owner Occupied Units	
		Number	% of Occupied
Total	74,598	49,195	65.9%
1-Person	20,748	11,898	57.3%
2-Person	25,586	17,997	70.3%
3-Person	12,931	8,684	67.2%
4-Person	9,547	6,785	71.1%
5-Person	3,899	2,612	67.0%
6-Person	1,255	822	65.5%
7+ Person	632	397	62.8%

Data Note: Persons of Hispanic Origin may be of any race.
Source: U.S. Census Bureau, Census 2010 Summary File 1.

May 18, 2017



Household Income Profile

707 East St, Longwood, Florida, 32750
Ring: 1 mile radius

Prepared by Esri
Latitude: 28.69598
Longitude: -81.32970

Summary	2016	2021	2016-2021 Change	2016-2021 Annual Rate
Population	10,919	11,432	513	0.92%
Households	4,574	4,770	196	0.84%
Median Age	39.3	38.7	-0.6	-0.31%
Average Household Size	2.36	2.38	0.02	0.17%

Households by Income	2016		2021	
	Number	Percent	Number	Percent
Household	4,574	100%	4,770	100%
<\$15,000	602	13.2%	630	13.2%
\$15,000-\$24,999	619	13.5%	744	15.6%
\$25,000-\$34,999	567	12.4%	425	8.9%
\$35,000-\$49,999	831	18.2%	694	14.5%
\$50,000-\$74,999	925	20.2%	1,035	21.7%
\$75,000-\$99,999	548	12.0%	635	13.3%
\$100,000-\$149,999	289	6.3%	362	7.6%
\$150,000-\$199,999	125	2.7%	168	3.5%
\$200,000+	67	1.5%	79	1.7%
Median Household Income	\$42,685		\$47,015	
Average Household Income	\$55,804		\$60,646	
Per Capita Income	\$23,132		\$24,999	

Data Note: Income reported for July 1, 2021 represents annual income for the preceding year, expressed in current (2020) dollars, including an adjustment for inflation.
Source: U.S. Census Bureau, Census 2010 Summary File 1. Esri Forecasts for 2016 and 2021.

May 18, 2017



Household Income Profile

707 East St, Longwood, Florida, 32750

Ring: 1 mile radius

Prepared by Esri

Latitude: 28.69598

Longitude: -81.32970

2016 Households by Income and Age of Householder							
	<25	25-34	35-44	45-54	55-64	65-74	75+
HH Income Base	232	764	736	841	841	616	544
<\$15,000	39	85	67	84	131	75	121
\$15,000-\$24,999	51	78	69	73	89	113	146
\$25,000-\$34,999	39	90	80	84	92	103	78
\$35,000-\$49,999	44	155	144	140	135	136	78
\$50,000-\$74,999	36	182	160	185	182	104	75
\$75,000-\$99,999	16	100	109	139	110	42	32
\$100,000-\$149,999	4	44	65	79	59	29	9
\$150,000-\$199,999	3	23	30	34	23	8	4
\$200,000+	0	5	12	23	19	6	2
Median HH Income	\$30,901	\$46,518	\$50,793	\$53,666	\$46,144	\$36,259	\$25,516
Average HH Income	\$39,330	\$56,482	\$63,727	\$67,896	\$59,452	\$47,376	\$36,370
Percent Distribution							
	<25	25-34	35-44	45-54	55-64	65-74	75+
HH Income Base	100%	100%	100%	100%	100%	100%	100%
<\$15,000	16.8%	11.1%	9.1%	10.0%	15.6%	12.2%	22.2%
\$15,000-\$24,999	22.0%	10.2%	9.4%	8.7%	10.6%	18.3%	26.8%
\$25,000-\$34,999	16.8%	11.8%	10.9%	10.0%	10.9%	16.7%	14.3%
\$35,000-\$49,999	19.0%	20.3%	19.6%	16.6%	16.1%	22.1%	14.3%
\$50,000-\$74,999	15.5%	23.8%	21.7%	22.0%	21.6%	16.9%	13.8%
\$75,000-\$99,999	6.9%	13.1%	14.8%	16.5%	13.1%	6.8%	5.9%
\$100,000-\$149,999	1.7%	5.8%	8.8%	9.4%	7.0%	4.7%	1.7%
\$150,000-\$199,999	1.3%	3.0%	4.1%	4.0%	2.7%	1.3%	0.7%
\$200,000+	0.0%	0.7%	1.6%	2.7%	2.3%	1.0%	0.4%

Data Note: Income reported for July 1, 2021 represents annual income for the preceding year, expressed in current (2020) dollars, including an adjustment for inflation.

Source: U.S. Census Bureau, Census 2010 Summary File 1. Esri Forecasts for 2016 and 2021.



Household Income Profile

707 East St, Longwood, Florida, 32750

Ring: 1 mile radius

Prepared by Esri

Latitude: 28.69598

Longitude: -81.32970

2021 Households by Income and Age of Householder							
	<25	25-34	35-44	45-54	55-64	65-74	75+
HH Income Base	221	878	777	767	898	690	540
<\$15,000	42	100	72	72	130	91	122
\$15,000-\$24,999	58	108	78	75	109	143	172
\$25,000-\$34,999	25	68	62	52	73	87	58
\$35,000-\$49,999	33	138	116	104	115	129	58
\$50,000-\$74,999	39	229	183	176	205	126	76
\$75,000-\$99,999	16	129	132	140	130	53	34
\$100,000-\$149,999	3	62	81	85	79	41	12
\$150,000-\$199,999	4	37	37	41	33	11	4
\$200,000+	0	8	14	22	23	9	3
Median HH Income	\$28,338	\$51,715	\$55,813	\$58,793	\$51,684	\$37,007	\$22,813
Average HH Income	\$40,494	\$62,032	\$69,863	\$74,377	\$65,498	\$51,087	\$37,905
Percent Distribution							
	<25	25-34	35-44	45-54	55-64	65-74	75+
HH Income Base	100%	100%	100%	100%	100%	100%	100%
<\$15,000	19.0%	11.4%	9.3%	9.4%	14.5%	13.2%	22.6%
\$15,000-\$24,999	26.2%	12.3%	10.0%	9.8%	12.1%	20.7%	31.9%
\$25,000-\$34,999	11.3%	7.7%	8.0%	6.8%	8.1%	12.6%	10.7%
\$35,000-\$49,999	14.9%	15.7%	14.9%	13.6%	12.8%	18.7%	10.7%
\$50,000-\$74,999	17.6%	26.1%	23.6%	22.9%	22.8%	18.3%	14.1%
\$75,000-\$99,999	7.2%	14.7%	17.0%	18.3%	14.5%	7.7%	6.3%
\$100,000-\$149,999	1.4%	7.1%	10.4%	11.1%	8.8%	5.9%	2.2%
\$150,000-\$199,999	1.8%	4.2%	4.8%	5.3%	3.7%	1.6%	0.7%
\$200,000+	0.0%	0.9%	1.8%	2.9%	2.6%	1.3%	0.6%

Data Note: Income reported for July 1, 2021 represents annual income for the preceding year, expressed in current (2020) dollars, including an adjustment for inflation.

Source: U.S. Census Bureau, Census 2010 Summary File 1. Esri Forecasts for 2016 and 2021.



Household Income Profile

707 East St, Longwood, Florida, 32750
Ring: 3 mile radius

Prepared by Esri
Latitude: 28.69598
Longitude: -81.32970

Summary	2016	2021	2016-2021 Change	2016-2021 Annual Rate
Population	70,864	74,424	3,560	0.99%
Households	26,828	27,985	1,157	0.85%
Median Age	41.2	41.3	0.1	0.05%
Average Household Size	2.63	2.64	0.01	0.08%

Households by Income	2016		2021	
	Number	Percent	Number	Percent
Household	26,828	100%	27,985	100%
<\$15,000	2,761	10.3%	2,804	10.0%
\$15,000-\$24,999	2,868	10.7%	3,415	12.2%
\$25,000-\$34,999	3,015	11.2%	2,002	7.2%
\$35,000-\$49,999	4,210	15.7%	2,974	10.6%
\$50,000-\$74,999	5,154	19.2%	6,078	21.7%
\$75,000-\$99,999	3,431	12.8%	4,131	14.8%
\$100,000-\$149,999	3,755	14.0%	4,565	16.3%
\$150,000-\$199,999	1,043	3.9%	1,343	4.8%
\$200,000+	591	2.2%	674	2.4%
Median Household Income	\$51,835		\$58,938	
Average Household Income	\$67,089		\$74,094	
Per Capita Income	\$25,854		\$28,328	

Data Note: Income reported for July 1, 2021 represents annual income for the preceding year, expressed in current (2020) dollars, including an adjustment for inflation.
Source: U.S. Census Bureau, Census 2010 Summary File 1. Esri Forecasts for 2016 and 2021.

May 18, 2017



Household Income Profile

707 East St, Longwood, Florida, 32750
Ring: 3 mile radius

Prepared by Esri
Latitude: 28.69598
Longitude: -81.32970

2016 Households by Income and Age of Householder							
	<25	25-34	35-44	45-54	55-64	65-74	75+
HH Income Base	767	3,821	4,322	5,471	5,597	3,986	2,862
<\$15,000	135	366	335	387	646	402	491
\$15,000-\$24,999	143	351	326	373	506	490	679
\$25,000-\$34,999	139	445	420	447	494	558	511
\$35,000-\$49,999	139	676	694	697	712	769	523
\$50,000-\$74,999	128	861	829	1,088	1,088	794	364
\$75,000-\$99,999	49	507	598	915	807	405	151
\$100,000-\$149,999	29	453	789	1,051	909	413	111
\$150,000-\$199,999	4	114	210	308	285	97	25
\$200,000+	1	49	121	205	150	59	7
Median HH Income	\$31,925	\$51,353	\$59,220	\$67,207	\$57,790	\$44,410	\$29,244
Average HH Income	\$40,989	\$63,124	\$75,274	\$81,758	\$72,700	\$58,893	\$39,465
Percent Distribution							
	<25	25-34	35-44	45-54	55-64	65-74	75+
HH Income Base	100%	100%	100%	100%	100%	100%	100%
<\$15,000	17.6%	9.6%	7.8%	7.1%	11.5%	10.1%	17.2%
\$15,000-\$24,999	18.6%	9.2%	7.5%	6.8%	9.0%	12.3%	23.7%
\$25,000-\$34,999	18.1%	11.6%	9.7%	8.2%	8.8%	14.0%	17.9%
\$35,000-\$49,999	18.1%	17.7%	16.1%	12.7%	12.7%	19.3%	18.3%
\$50,000-\$74,999	16.7%	22.5%	19.2%	19.9%	19.4%	19.9%	12.7%
\$75,000-\$99,999	6.4%	13.3%	13.8%	16.7%	14.4%	10.2%	5.3%
\$100,000-\$149,999	3.8%	11.9%	18.3%	19.2%	16.2%	10.4%	3.9%
\$150,000-\$199,999	0.5%	3.0%	4.9%	5.6%	5.1%	2.4%	0.9%
\$200,000+	0.1%	1.3%	2.8%	3.7%	2.7%	1.5%	0.2%

Data Note: Income reported for July 1, 2021 represents annual income for the preceding year, expressed in current (2020) dollars, including an adjustment for inflation.
Source: U.S. Census Bureau, Census 2010 Summary File 1. Esri Forecasts for 2016 and 2021.



Household Income Profile

707 East St, Longwood, Florida, 32750
Ring: 3 mile radius

Prepared by Esri
Latitude: 28.69598
Longitude: -81.32970

2021 Households by Income and Age of Householder							
	<25	25-34	35-44	45-54	55-64	65-74	75+
HH Income Base	722	4,209	4,565	4,925	5,784	4,566	3,214
<\$15,000	148	401	333	324	588	465	545
\$15,000-\$24,999	158	432	364	355	563	630	912
\$25,000-\$34,999	84	302	275	233	309	409	390
\$35,000-\$49,999	100	506	465	419	484	596	404
\$50,000-\$74,999	141	1,068	970	1,049	1,249	1,085	518
\$75,000-\$99,999	57	665	745	932	943	574	216
\$100,000-\$149,999	29	612	991	1,070	1,099	580	182
\$150,000-\$199,999	5	161	280	345	370	144	37
\$200,000+	1	63	143	197	179	82	9
Median HH Income	\$30,954	\$58,109	\$70,560	\$76,565	\$66,968	\$52,762	\$28,165
Average HH Income	\$42,767	\$70,620	\$84,628	\$90,127	\$81,718	\$66,328	\$43,466
Percent Distribution							
	<25	25-34	35-44	45-54	55-64	65-74	75+
HH Income Base	100%	100%	100%	100%	100%	100%	100%
<\$15,000	20.5%	9.5%	7.3%	6.6%	10.2%	10.2%	17.0%
\$15,000-\$24,999	21.9%	10.3%	8.0%	7.2%	9.7%	13.8%	28.4%
\$25,000-\$34,999	11.6%	7.2%	6.0%	4.7%	5.3%	9.0%	12.1%
\$35,000-\$49,999	13.9%	12.0%	10.2%	8.5%	8.4%	13.1%	12.6%
\$50,000-\$74,999	19.5%	25.4%	21.2%	21.3%	21.6%	23.8%	16.1%
\$75,000-\$99,999	7.9%	15.8%	16.3%	18.9%	16.3%	12.6%	6.7%
\$100,000-\$149,999	4.0%	14.5%	21.7%	21.7%	19.0%	12.7%	5.7%
\$150,000-\$199,999	0.7%	3.8%	6.1%	7.0%	6.4%	3.2%	1.2%
\$200,000+	0.1%	1.5%	3.1%	4.0%	3.1%	1.8%	0.3%

Data Note: Income reported for July 1, 2021 represents annual income for the preceding year, expressed in current (2020) dollars, including an adjustment for inflation.
Source: U.S. Census Bureau, Census 2010 Summary File 1. Esri Forecasts for 2016 and 2021.



Household Income Profile

707 East St, Longwood, Florida, 32750
Ring: 5 mile radius

Prepared by Esri
Latitude: 28.69598
Longitude: -81.32970

Summary	2016	2021	2016-2021 Change	2016-2021 Annual Rate
Population	192,555	202,358	9,803	1.00%
Households	77,021	80,411	3,390	0.87%
Median Age	40.9	41.3	0.4	0.19%
Average Household Size	2.48	2.49	0.01	0.08%

Households by Income	2016		2021	
	Number	Percent	Number	Percent
Household	77,021	100%	80,411	100%
<\$15,000	6,854	8.9%	6,886	8.6%
\$15,000-\$24,999	7,303	9.5%	8,687	10.8%
\$25,000-\$34,999	8,733	11.3%	5,763	7.2%
\$35,000-\$49,999	11,367	14.8%	8,076	10.0%
\$50,000-\$74,999	15,109	19.6%	17,690	22.0%
\$75,000-\$99,999	9,715	12.6%	11,572	14.4%
\$100,000-\$149,999	11,043	14.3%	13,468	16.7%
\$150,000-\$199,999	3,829	5.0%	4,813	6.0%
\$200,000+	3,069	4.0%	3,456	4.3%
Median Household Income	\$55,119		\$62,701	
Average Household Income	\$75,159		\$82,897	
Per Capita Income	\$30,407		\$33,272	

Data Note: Income reported for July 1, 2021 represents annual income for the preceding year, expressed in current (2020) dollars, including an adjustment for inflation.
Source: U.S. Census Bureau, Census 2010 Summary File 1. Esri Forecasts for 2016 and 2021.

May 18, 2017



Household Income Profile

707 East St, Longwood, Florida, 32750

Ring: 5 mile radius

Prepared by Esri

Latitude: 28.69598

Longitude: -81.32970

2016 Households by Income and Age of Householder							
	<25	25-34	35-44	45-54	55-64	65-74	75+
HH Income Base	2,893	12,066	12,410	15,117	15,385	10,933	8,218
<\$15,000	462	985	821	919	1,478	948	1,240
\$15,000-\$24,999	486	1,052	839	878	1,175	1,211	1,661
\$25,000-\$34,999	604	1,495	1,227	1,217	1,289	1,407	1,494
\$35,000-\$49,999	502	2,067	1,862	1,748	1,745	1,896	1,547
\$50,000-\$74,999	502	2,849	2,405	2,904	2,909	2,300	1,240
\$75,000-\$99,999	167	1,569	1,668	2,401	2,244	1,245	422
\$100,000-\$149,999	129	1,425	2,252	2,932	2,650	1,219	437
\$150,000-\$199,999	26	393	747	1,102	1,081	379	100
\$200,000+	15	230	589	1,015	814	328	77
Median HH Income	\$32,682	\$52,481	\$62,731	\$73,682	\$65,068	\$50,031	\$32,517
Average HH Income	\$43,413	\$65,914	\$83,250	\$93,585	\$85,369	\$67,371	\$45,032
Percent Distribution							
	<25	25-34	35-44	45-54	55-64	65-74	75+
HH Income Base	100%	100%	100%	100%	100%	100%	100%
<\$15,000	16.0%	8.2%	6.6%	6.1%	9.6%	8.7%	15.1%
\$15,000-\$24,999	16.8%	8.7%	6.8%	5.8%	7.6%	11.1%	20.2%
\$25,000-\$34,999	20.9%	12.4%	9.9%	8.1%	8.4%	12.9%	18.2%
\$35,000-\$49,999	17.4%	17.1%	15.0%	11.6%	11.3%	17.3%	18.8%
\$50,000-\$74,999	17.4%	23.6%	19.4%	19.2%	18.9%	21.0%	15.1%
\$75,000-\$99,999	5.8%	13.0%	13.4%	15.9%	14.6%	11.4%	5.1%
\$100,000-\$149,999	4.5%	11.8%	18.1%	19.4%	17.2%	11.1%	5.3%
\$150,000-\$199,999	0.9%	3.3%	6.0%	7.3%	7.0%	3.5%	1.2%
\$200,000+	0.5%	1.9%	4.7%	6.7%	5.3%	3.0%	0.9%

Data Note: Income reported for July 1, 2021 represents annual income for the preceding year, expressed in current (2020) dollars, including an adjustment for inflation.

Source: U.S. Census Bureau, Census 2010 Summary File 1. Esri Forecasts for 2016 and 2021.



Household Income Profile

707 East St, Longwood, Florida, 32750
Ring: 5 mile radius

Prepared by Esri
Latitude: 28.69598
Longitude: -81.32970

2021 Households by Income and Age of Householder							
	<25	25-34	35-44	45-54	55-64	65-74	75+
HH Income Base	2,718	12,837	13,251	13,656	15,772	12,823	9,356
<\$15,000	490	1,035	817	766	1,306	1,090	1,384
\$15,000-\$24,999	547	1,251	949	839	1,296	1,566	2,242
\$25,000-\$34,999	378	983	820	653	787	1,031	1,111
\$35,000-\$49,999	365	1,500	1,284	1,057	1,166	1,470	1,235
\$50,000-\$74,999	559	3,393	2,839	2,790	3,239	3,092	1,777
\$75,000-\$99,999	197	1,980	2,063	2,431	2,540	1,744	616
\$100,000-\$149,999	139	1,859	2,822	2,978	3,163	1,794	714
\$150,000-\$199,999	28	548	970	1,179	1,355	570	162
\$200,000+	15	289	689	963	920	466	114
Median HH Income	\$33,108	\$59,266	\$73,950	\$80,803	\$75,656	\$57,532	\$34,308
Average HH Income	\$46,073	\$74,154	\$92,764	\$102,271	\$95,199	\$76,685	\$51,097
Percent Distribution							
	<25	25-34	35-44	45-54	55-64	65-74	75+
HH Income Base	100%	100%	100%	100%	100%	100%	100%
<\$15,000	18.0%	8.1%	6.2%	5.6%	8.3%	8.5%	14.8%
\$15,000-\$24,999	20.1%	9.7%	7.2%	6.1%	8.2%	12.2%	24.0%
\$25,000-\$34,999	13.9%	7.7%	6.2%	4.8%	5.0%	8.0%	11.9%
\$35,000-\$49,999	13.4%	11.7%	9.7%	7.7%	7.4%	11.5%	13.2%
\$50,000-\$74,999	20.6%	26.4%	21.4%	20.4%	20.5%	24.1%	19.0%
\$75,000-\$99,999	7.2%	15.4%	15.6%	17.8%	16.1%	13.6%	6.6%
\$100,000-\$149,999	5.1%	14.5%	21.3%	21.8%	20.1%	14.0%	7.6%
\$150,000-\$199,999	1.0%	4.3%	7.3%	8.6%	8.6%	4.4%	1.7%
\$200,000+	0.6%	2.3%	5.2%	7.1%	5.8%	3.6%	1.2%

Data Note: Income reported for July 1, 2021 represents annual income for the preceding year, expressed in current (2020) dollars, including an adjustment for inflation.
Source: U.S. Census Bureau, Census 2010 Summary File 1. Esri Forecasts for 2016 and 2021.