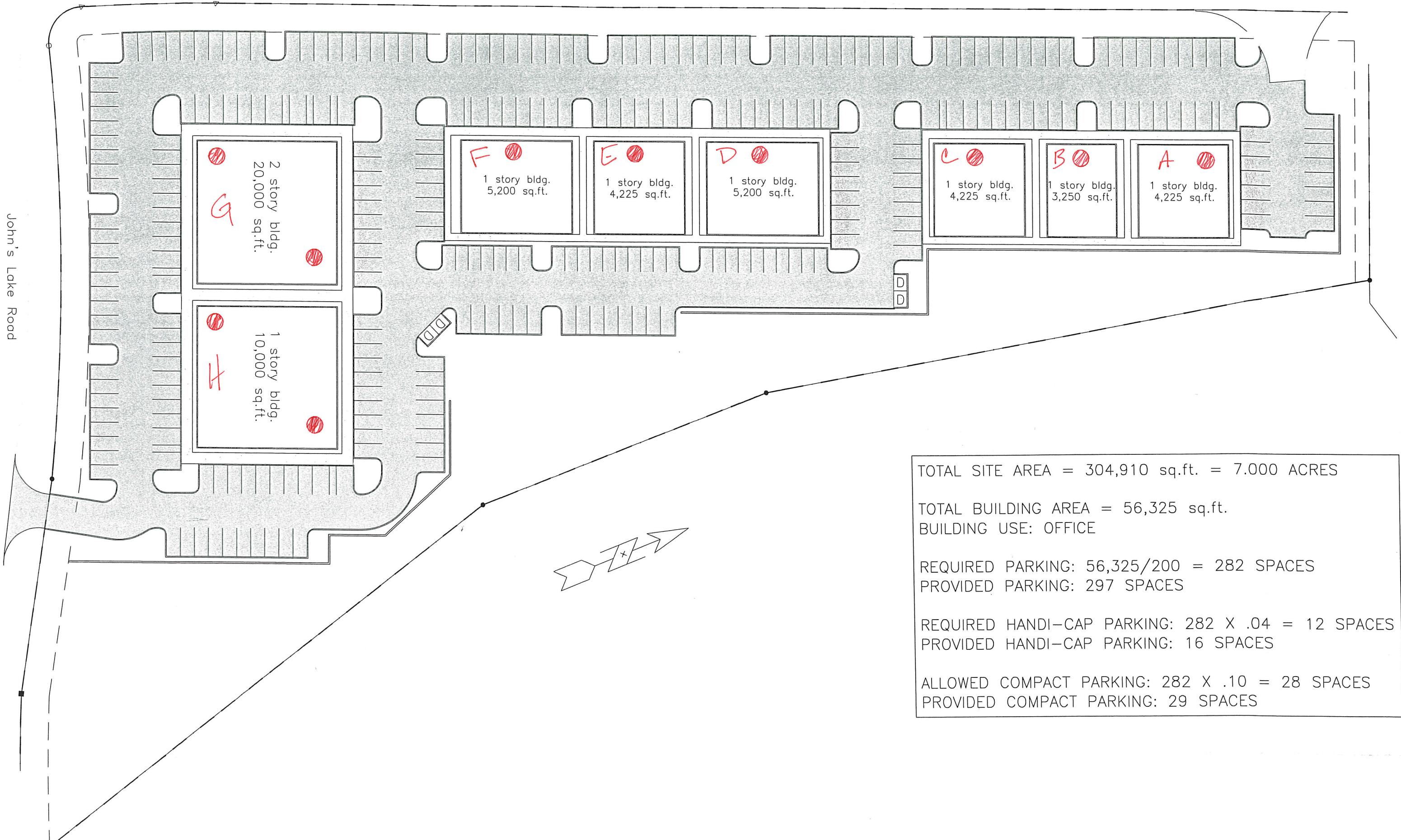


Citrus Tower Blvd.

John's Lake Road



TOTAL SITE AREA = 304,910 sq.ft. = 7.000 ACRES  
TOTAL BUILDING AREA = 56,325 sq.ft.  
BUILDING USE: OFFICE  
REQUIRED PARKING:  $56,325/200 = 282$  SPACES  
PROVIDED PARKING: 297 SPACES  
REQUIRED HANDI-CAP PARKING:  $282 \times .04 = 12$  SPACES  
PROVIDED HANDI-CAP PARKING: 16 SPACES  
ALLOWED COMPACT PARKING:  $282 \times .10 = 28$  SPACES  
PROVIDED COMPACT PARKING: 29 SPACES