



FOR SALE | LAND

RIVERFRONT SITE FOR SALE

810-814 S. Peninsula Drive, Daytona Beach, FL 32118



SALE OVERVIEW

SALE PRICE: \$1,750,000

LOT SIZE: 2.9+/- Acres

PARCEL NO: 5309-19-00-0080
5309-19-00-0090

TRAFFIC COUNT: 8,700 AADT

ZONING: MFR-20

PROPERTY DESCRIPTION

2.9+/- Acres Intracoastal Site.
290+/- feet of direct Halifax River frontage.
Over 500 feet of depth.
60 potential multifamily units or divide into multiple homesites.
Convenient location to Jackie Robinson Ballpark, Historic Beach Street Retail Area, Ocean Walk Shoppes, Ocean Center, Restaurants, and more.
Located just a few blocks south of International Speedway Boulevard, two blocks to the beach, and just west of the former proposed site of Hard Rock Hotel and Cafe.

LOCATION OVERVIEW

Site situated in a historical neighborhood on the Halifax Intracoastal Waterway. Short walk to the World's Most Famous Daytona Beach. Located in Daytona Beach perfectly nestled between Ormond Beach and Port Orange.



JOHN W. TROST, CCIM
Principal | Senior Advisor
386.301.4581
john.trost@svn.com
FL #BK-0160420

All SVN® Offices Independently Owned & Operated.
The information listed above has been obtained from sources we believe to be reliable, however, we accept no responsibility for its correctness.

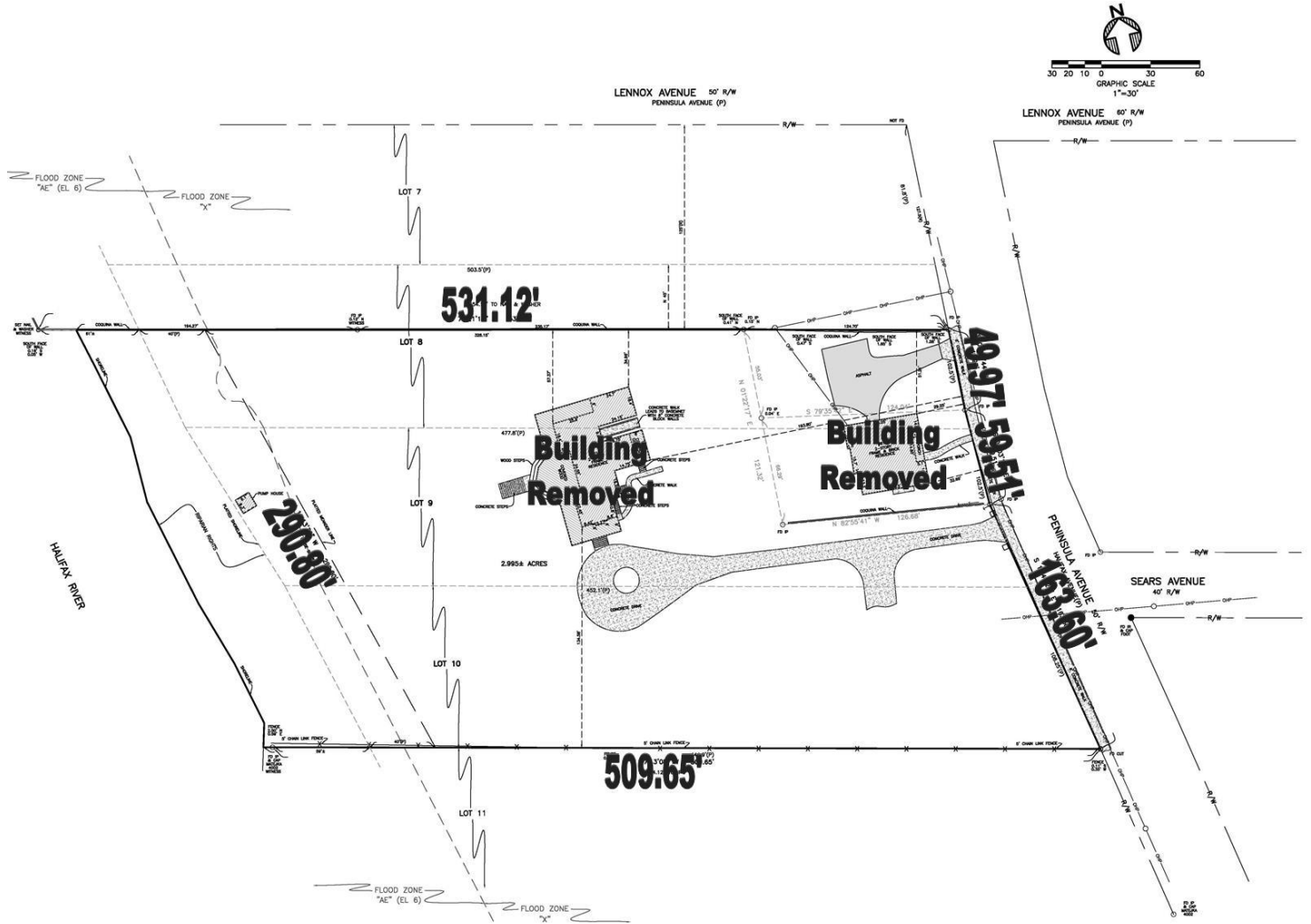


FOR SALE | LAND

RIVERFRONT SITE FOR SALE

810-814 S. Peninsula Drive, Daytona Beach, FL 32118

Survey



JOHN W. TROST, CCIM
 Principal | Senior Advisor
 386.301.4581
 john.trost@svn.com
 FL #BK-0160420

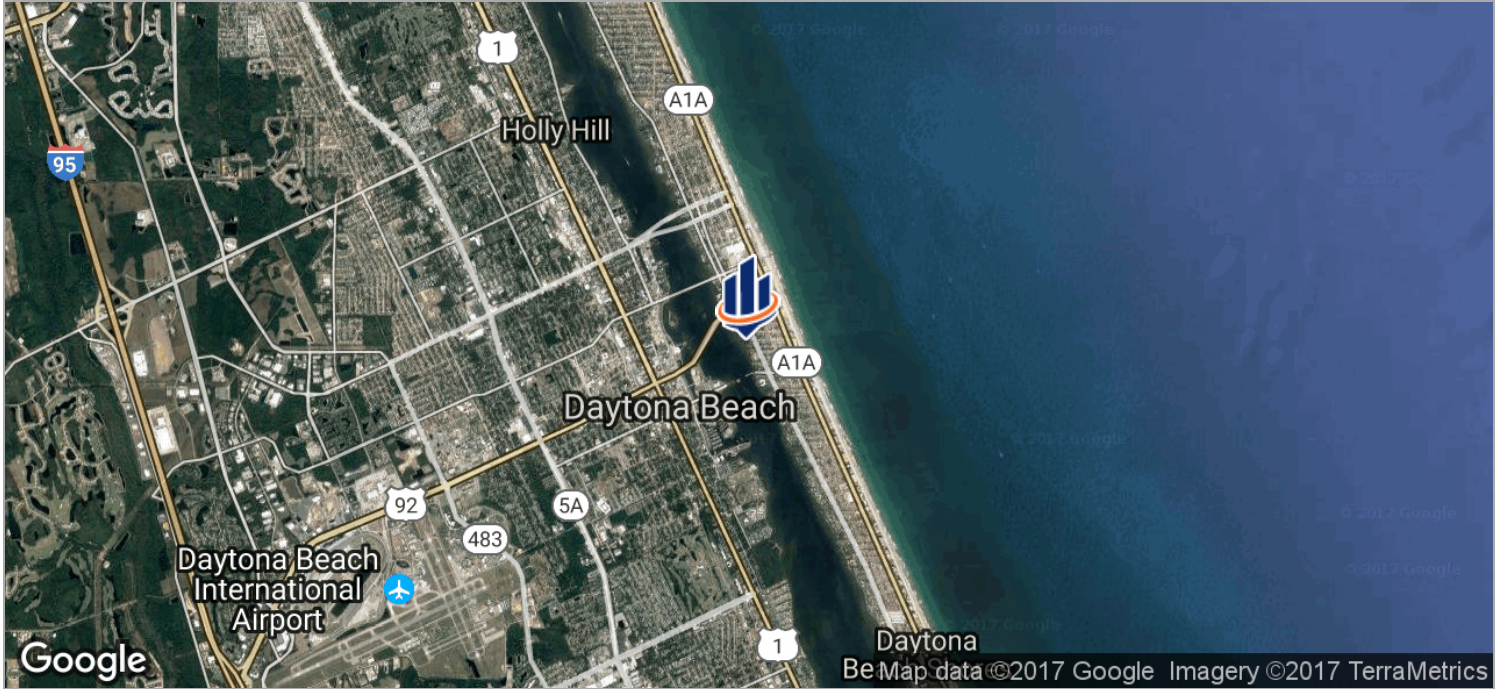
All SVN® Offices Independently Owned & Operated.
 The information listed above has been obtained from sources we believe to be reliable, however, we accept no responsibility for its correctness.



FOR SALE | LAND

RIVERFRONT SITE FOR SALE

810-814 S. Peninsula Drive, Daytona Beach, FL 32118



JOHN W. TROST, CCIM
Principal | Senior Advisor
386.301.4581
john.trost@svn.com
FL #BK-0160420

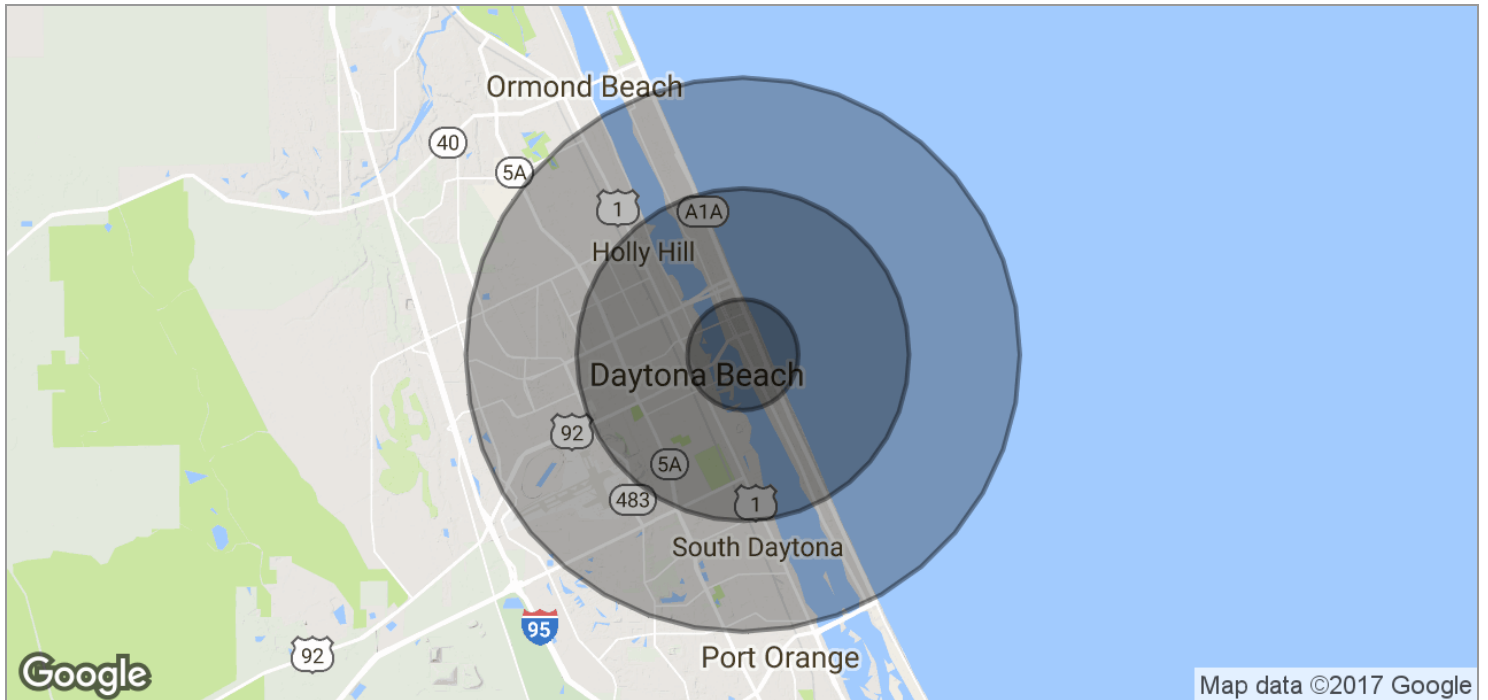
All SVN® Offices Independently Owned & Operated.
The information listed above has been obtained from sources we believe to be reliable, however, we accept no responsibility for its correctness.



FOR SALE | LAND

RIVERFRONT SITE FOR SALE

810-814 S. Peninsula Drive, Daytona Beach, FL 32118



POPULATION	1 MILE	3 MILES	5 MILES
TOTAL POPULATION	4,631	45,917	106,907
MEDIAN AGE	40.2	38.7	40.9
MEDIAN AGE (MALE)	38.0	37.7	39.1
MEDIAN AGE (FEMALE)	42.4	39.6	43.1

HOUSEHOLDS & INCOME	1 MILE	3 MILES	5 MILES
TOTAL HOUSEHOLDS	2,293	17,799	44,345
# OF PERSONS PER HH	2.2	2.4	2.4
AVERAGE HH INCOME	\$41,535	\$41,924	\$45,413
AVERAGE HOUSE VALUE	\$267,642	\$193,538	\$192,336



JOHN W. TROST, CCIM
 Principal | Senior Advisor
 386.301.4581
 john.trost@svn.com
 FL #BK-0160420

All SVN® Offices Independently Owned & Operated.
 The information listed above has been obtained from sources we believe to be reliable, however, we accept no responsibility for its correctness.