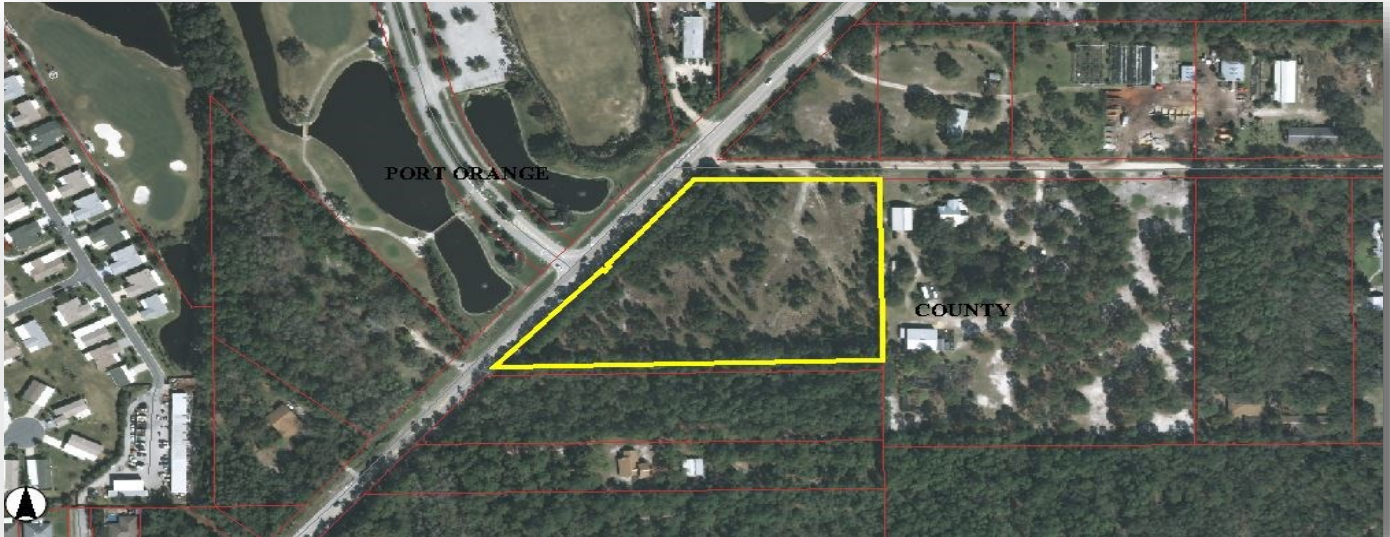




**FOR SALE**  
Vacant Commercial Site  
Port Orange, FL



## Over 600 Ft of Frontage on Taylor Road

### Property Features

**Lot Size:** 5.695 AC (248,075 SF)

**Volusia County Parcel ID:** 6224-00-00-0050

**Zoning:** Capital Development Group (PCD) Planned Commercial Development, City of Port Orange

**Traffic Count:** 15,370 (AADT 2015)

**Location:** South side of Taylor Road directly across from the lighted intersection of Crane Lakes Blvd. and Taylor Road, in Port Orange.

#### Highlights:

- Located at the intersection of the Traffic Light at main Entrance to Crane Lakes Golf & Country Club in Port Orange
- Over 600 ft. Frontage on Taylor Road
- Property borders Fern Park Drive to the East
- Future Land Use is Office Residential Transitional, which accommodates Professional/Medical Offices, Retail Sales, Personal Services, Multi-Family Developments, and Institutional uses.
- Located less than 3 miles from I-95 / Dunlawton Ave. Interchange.
- Water and Sewer are available from the City of Port Orange

For Sale

**\$549,000**  
(\$2.21/SF)

For More information:

**Diane Larsen**

**Selby Realty, Inc.**

200 E. Granada Blvd  
Suite 207

Ormond Beach, FL 32176

Cell: 386.451.1988

Office: 386.238.4456 Ext. 306

[dlarsen@selbyrealty.com](mailto:dlarsen@selbyrealty.com)



# 1763 Taylor Road, Port Orange Aerial Photo/Map

