

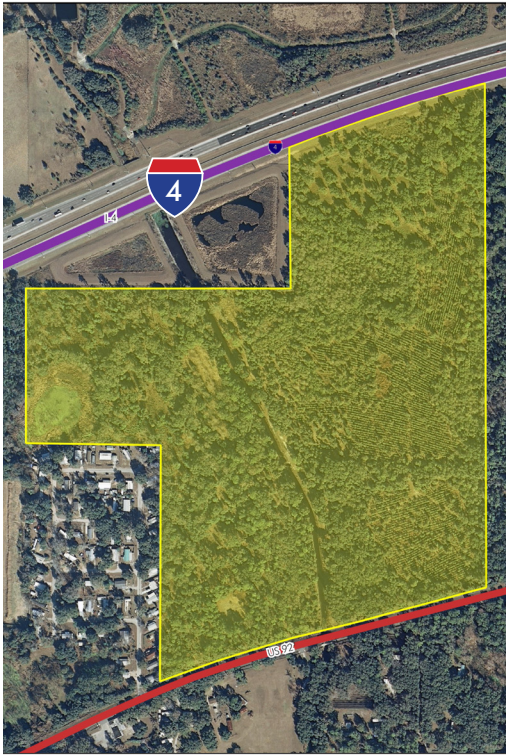
I-4 & HIGHWAY 92

94± acres

Hillsborough County, FL

SOLD!

LAND FOR SALE



LOCATION

The property is located approximately ½ mile west of the McIntosh Road/I-4 interchange.

SIZE

94± acres

PRICE

\$6,500,000 or \$69,149 per acre

ZONING

Zoned Agricultural Rural. Future Land Use is Res 1-1 unit per acre.

ROAD FRONTAGE

1,712'± on US Highway 92

1,044'± on I-4

UTILITIES

Hillsborough County Service Area.

DESCRIPTION

Zoned Agricultural Rural. Future Land Use Res 1-1 unit per acre.

Offering subject to errors, omission, prior sale or withdrawal without notice.

— Commercial Real Estate Investments | Management | Brokerage | Development | Land

Maury L. Carter & Associates, Inc.
407-422-3144 | www.maurycarter.com

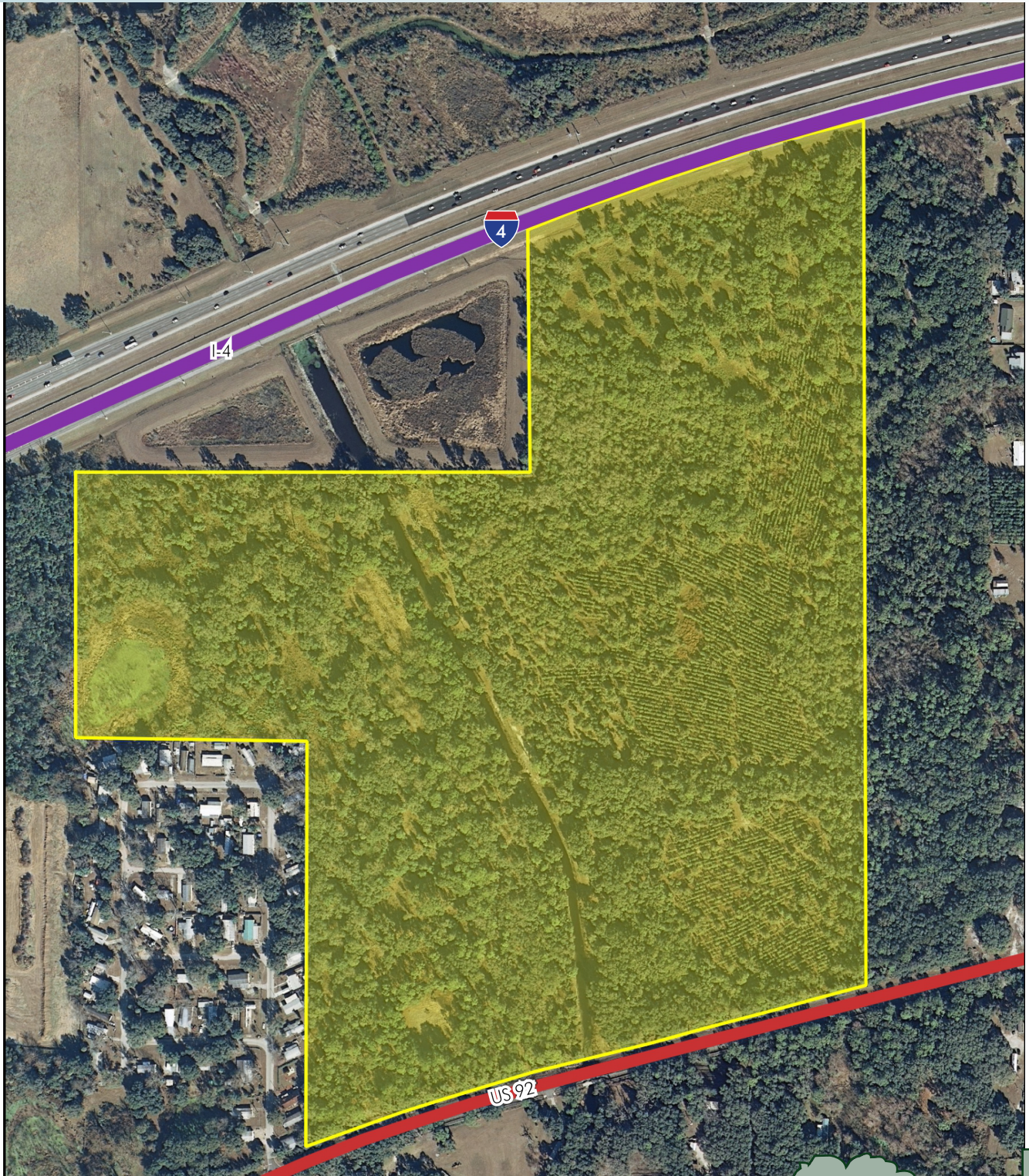


I-4 & HIGHWAY 92

94± acres

Hillsborough County, FL

SOLD!



PROPERTY MAP

— Commercial Real Estate Investments | Management | Brokerage | Development | Land

Maury L. Carter & Associates, Inc.
407-422-3144 | www.maurycarter.com

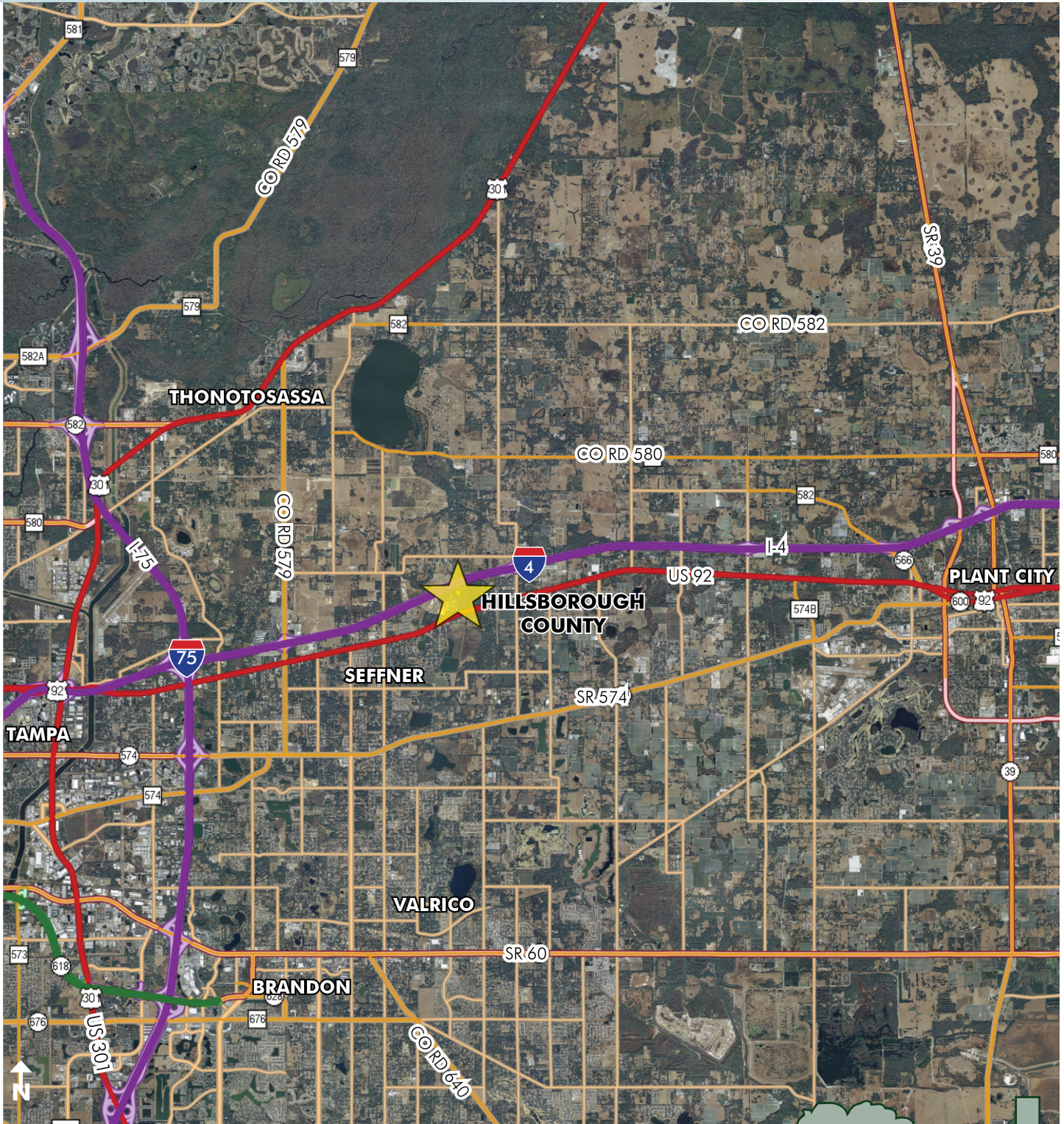


I-4 & HIGHWAY 92

94± acres

Hillsborough County, FL

SOLD!



REGIONAL MAP

— Commercial Real Estate Investments | Management | Brokerage | Development | Land

Maury L. Carter & Associates, Inc.
407-422-3144 | www.maurycarter.com

