



Telephone (561) 964-0700 • CELL(561) 629-4999
dplewis@dplewis.com

Lic. Real Estate Broker

FOR SALE

1525 Dr. Martin Luther King Jr. Blvd

Large Corner Lot - Free Standing Building – Belle Glade, FL



1525 Dr. Martin Luther King Jr. Blvd, Belle Glade, FL 33430



BELLE GLADE, FL - 1525 Dr. Martin Luther King Blvd
8,133 SF on 2.58 Acres

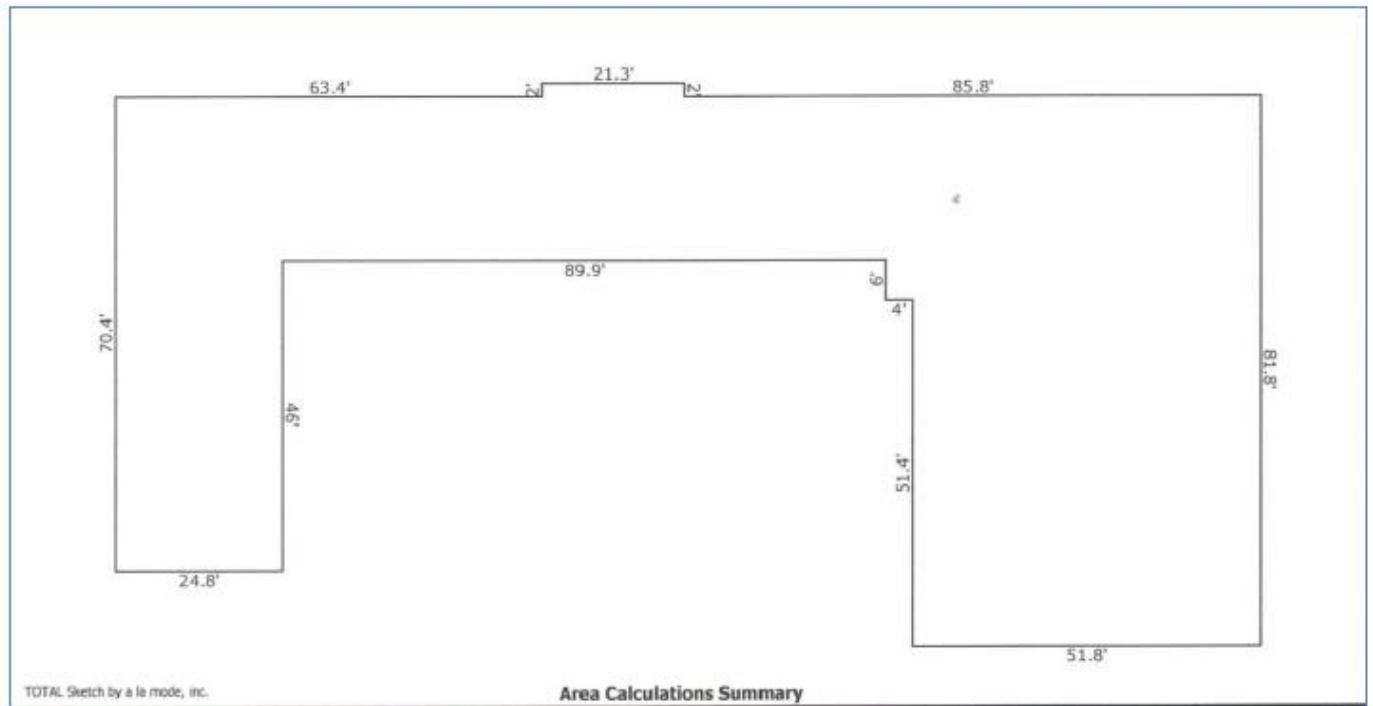
- 8,341 +/- sq. ft. Building
- 2.58 ac lot
- Office and Warehouse
- NE Corner Lot – MLK Blvd & SW 16th St
- CBS Construction
- Year Built 1972
- ZONED: B-2, Restricted Business Districts with an underlying land-use of Mixed Use
- Large paved parking lot
- PCN: 04-37-43-31-01-026-0040
- PRICE: \$480,000.00 cash ⁽¹⁾
- ⁽¹⁾ Proof of Funds or Funding maybe be required prior the property being shown. Please send proof of funds to dplewis@dplewis.com

For Personal Inspection or Additional Information, please call:

LEWIS REALTY GROUP, LLC
Daniel P. Lewis, SIOR, CCIM
561-629-4999

ANY INFORMATION STATEMENT, FACTS AND FIGURES PRESENTED HEREIN, WHILE NOT GUARANTEED OR WARRANTED, ARE SECURED FROM SOURCES, WE CONSIDER RELIABLE AND AUTHORITATIVE, HOWEVER, WE ARE NOT RESPONSIBLE FOR MIS-STATEMENTS OF FACTS, ERRORS, OMISSIONS, PRIOR SALE, WITHDRAWAL FROM MARKET OR CHANGE IN PRICE WITHOUT NOTICE. PRICE SUBJECT TO CHANGE WITHOUT NOTICE. NEITHER SELLER NOR LEWIS REALTY GROUP, LLC. CANNOT REPRESENT THE PAST, PRESENT AND FUTURE FINANCIAL CONDITIONS OF THE PROPERTY, INCLUDING THE INCOME AND EXPENSES. THANK YOU.





TOTAL Sketch by a la mode, inc.

Area Calculations Summary

Non-living Area		
First Floor	8340.92 Sq ft	$21.3 \times 2 = 42.6$ $51.8 \times 51.4 = 2662.52$ $30.4 \times 55.8 = 1696.32$ $24.8 \times 46 = 1140.8$ $24.4 \times 114.7 = 2798.68$

Building Sketch