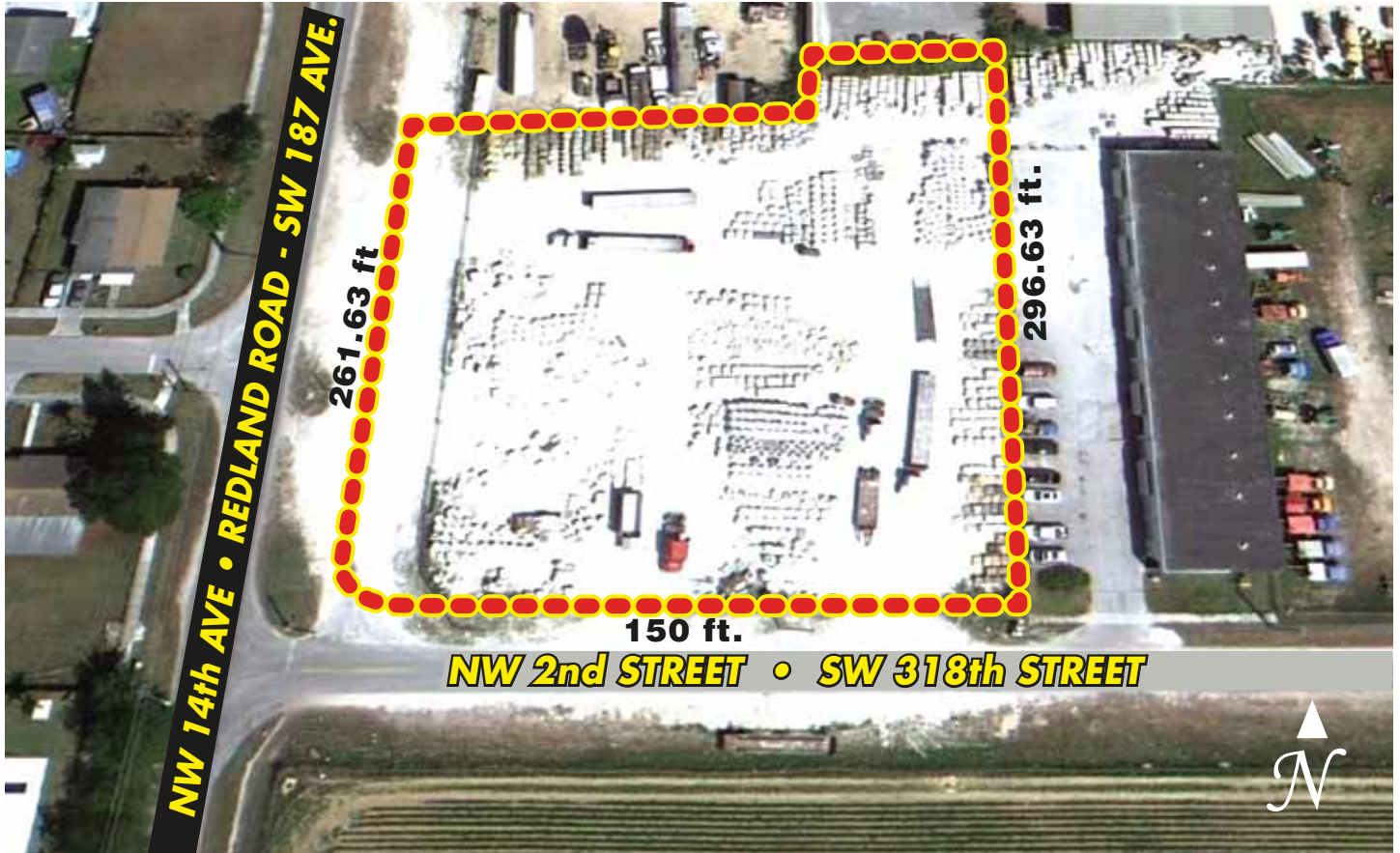


# 1.56 AC HEAVY INDUSTRIAL LOT

**\*\*\* Redland Road Corner \*\*\***

**1319 N.W. 2<sup>ND</sup> STREET, HOMESTEAD, FL 33030**  
**MDC Folio #s 10-7813-057-0130, 0140, 0150 & 0160**



- IU-2 Zoning - Fenced. High elevation Rockdale Limestone - well drained - all utilities near - vacant - ready to move in or build.
- 261 ft. Redland Road frontage x 150 ft deep. High traffic & exposure.
- 3 side ingress & egress.

**\$530,000**  
**or \$7.80 p.s.f.**



*Rick*

**RICK SWENTEK, P.A., A.L.C.**

**305.453.0109**

**Cell/Text: 305.773.5363**

[rickswen@bellsouth.net](mailto:rickswen@bellsouth.net)



[florida1realtyinc.com](http://florida1realtyinc.com)

103400 Overseas Hwy. Suite 250-D, Key Largo, FL 33037