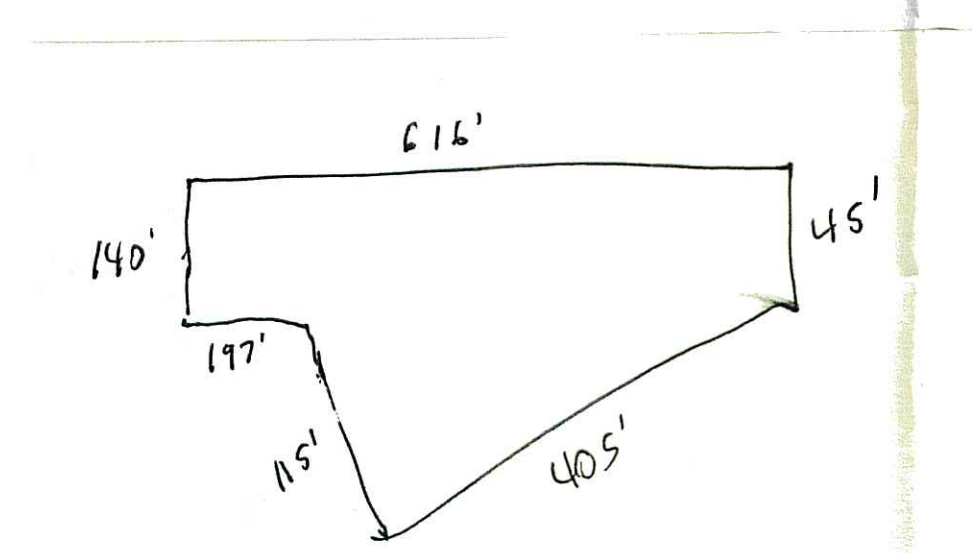


B.M. DATUM:  
B.M. U.S.C. & G.S. No. 21 SKS, ELEV. 69.00 50' E. NW COR. SEC. 20  
ON HEADWALL N. of BERESFORD AVE.



"A"  
Δ = 10°13'13"  
R = 1990.08'  
L = 354.99'  
C = 354.52'  
T = 177.96'  
CB = N28°19'22"W

85,963 sq ft  
= 1.97 acres

LEGAL DESCRIPTION Per O.R. 1469/231  
THE WEST 1/2 OF THE NW 1/4 OF THE NW 1/4 OF THE NW 1/4  
WEST OF STATE ROAD, EXCEPT THE EAST 165 FEET OF THE  
SOUTH 310.92 FEET ON THE EAST LINE AND 202.19 FEET ON  
THE WEST LINE, SECTION 20, TOWNSHIP 17 SOUTH, RANGE 30  
EAST, VOLUSIA COUNTY, FLORIDA.

### Topographic Survey FOR THE PANTRY

**ARTHUR W. STEINMAN & ASSOCIATES, INC.**  
professional land surveyors

Post Office Box 1598 • DeLand, Florida 32721-1598 • Telephone (904) 734-8050

CONCRETE MON. FOUND. ● PRO. MON. FOUND. ○ CONCRETE MON. SET ○ NO. PIPE SET ○ IRON SET (ALL POINTS SET BY STEINMAN & ASSOCIATES, INC.)  
DATE 8-7-85  
PROJ CODE 82070-05  
DRAWN [Signature]

PROSPECTS  
Dec 2016  
DeLand

9056