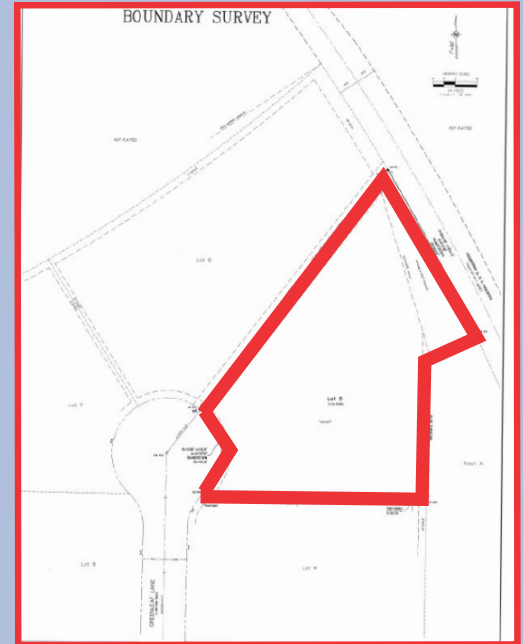
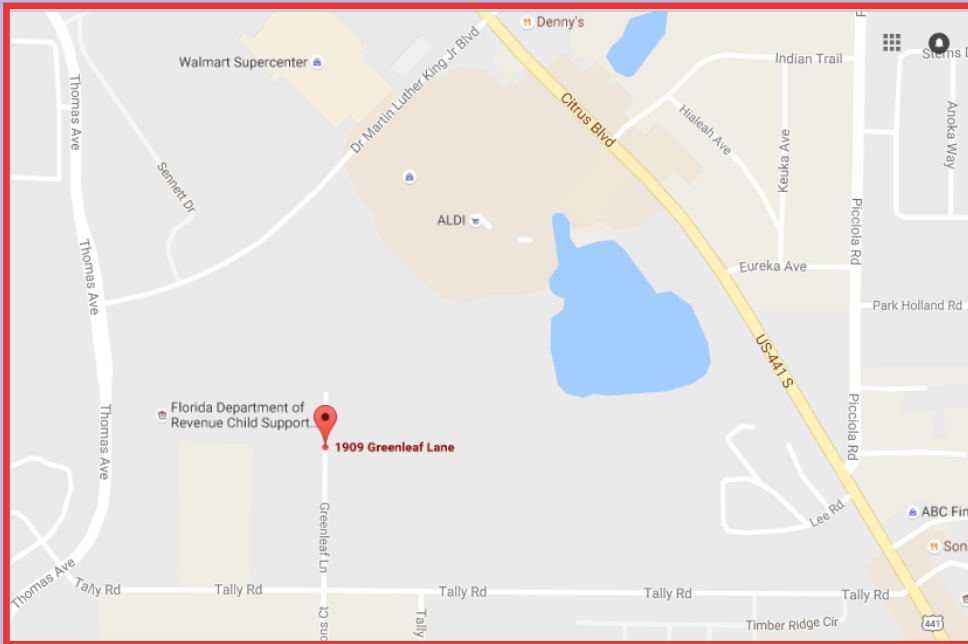


# Fantastic Location, Perfect to Build Your Companies Warehouse/Headquarters!

## 1909 Greenleaf Lane

Leesburg, Florida 34748



Due to off-sight retention, 80% of the property can be developed.



- \$89,900
- 2.2 Acres
- Zone M-1 Industrial
- MLS # G4833952

Located just off of Hwy 441/27, Convenient to I-75 & The Turnpike. Less than a \$1 per sq ft.

No other comparable property near this Great Price!



**RE/MAX**  
Premier Realty  
9668 N. US Hwy 301  
Suite 1200  
Wildwood, FL 34785

Each office is independently owned and operated

**Tim Sennett, MBA, CCIM**  
V. P. Commercial Division  
**352.516.6848**  
tim@sennett.com