

**Former Back Yard Burger
2585 N Columbia St (Hwy 441 N)
Milledgeville, GA 31061**



Size: 2,972 sf on 1.4 acres

Built: 2005

Zoning: Commercial

Traffic: 31,890 VPD

Utilities: All

Notes: Restaurant is currently vacant. Located in high traffic area across from Walmart. Great visibility & high traffic. Ideal for another retailer or restaurant concept. The Building has been vandalized (HVAC & electrical).

Neighbors: Milledgeville Mall, Wal-Mart, Mellow Mushroom, I-Hop, Captain D's, Pizza Hut, Chili's, Longhorn Steak House, many banks & other retailers.

*See plat on reverse for traffic signal access

~~**Sale Price: \$996,000**~~

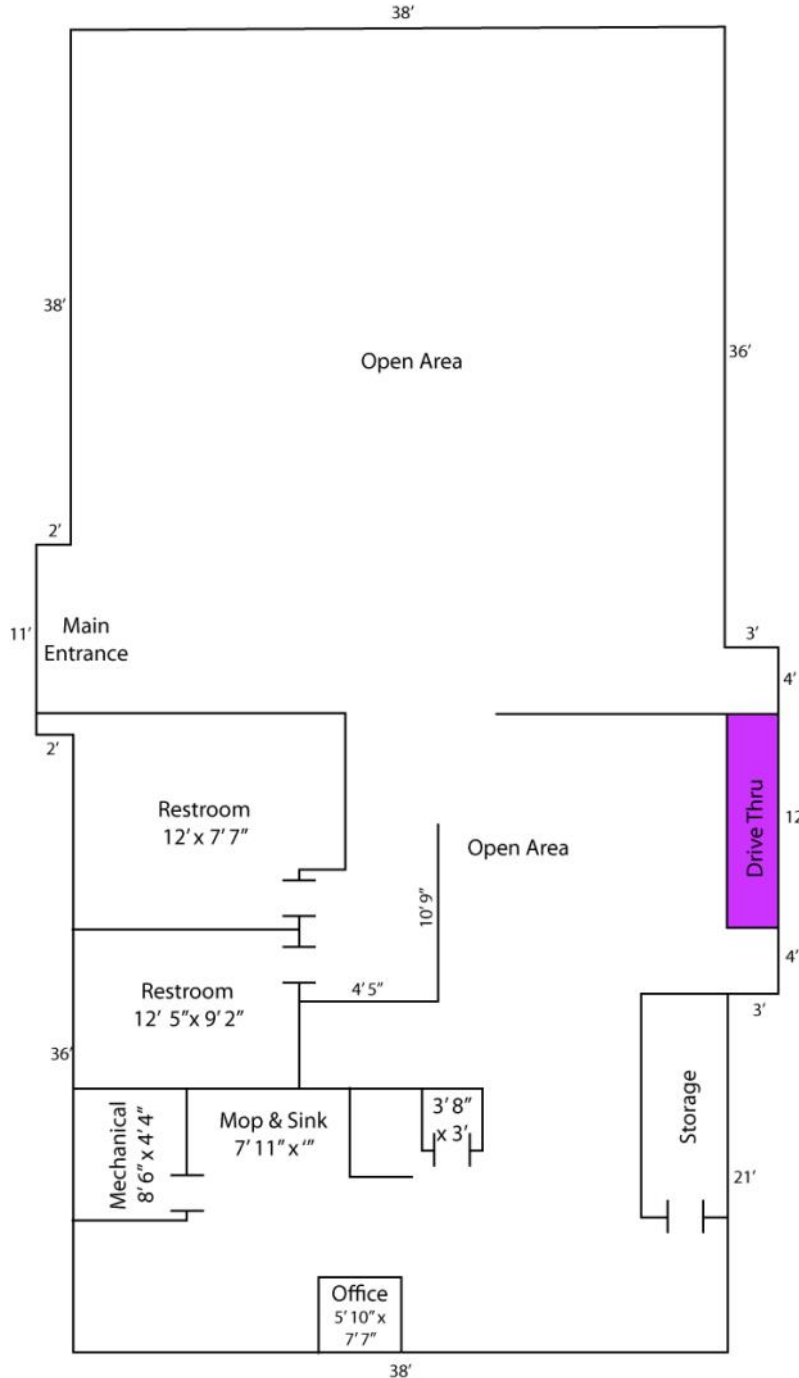
Reduced Price: \$450,000

Contact Trip Wilhoit, CCIM, ALC or Patty Burns, CCIM, ALC 478-746-9421

trip@fickling.com or patty@fickling.com

See detailed property information at www.Fickling.com

Former Back Yard Burger
2585 N Columbia St (Hwy 441 N)
Milledgeville, GA 31061



Contact Trip Wilhoit, CCIM, ALC or Patty Burns, CCIM, ALC 478-746-9421
trip@fickling.com or patty@fickling.com
See detailed property information at www.Fickling.com

**Former Back Yard Burger
2585 N Columbia St (Hwy 441 N)
Milledgeville, GA 31061**

Commercial Division
577 Mulberry Street
P.O. Box 310
Macon, GA 31202
(478) 746-9421
(478) 742-2015 FAX
info@fickling.com EMAIL
www.fickling.com



Contact Trip Wilhoit, CCIM, ALC or Patty Burns, CCIM, ALC 478-746-9421
trip@fickling.com or patty@fickling.com
See detailed property information at www.Fickling.com

This information is from resources deemed to be reliable, no warranties or guarantees for accuracy are made by Fickling and Company