



FOR SALE OR LEASE | OFFICE CONDOS

HAND AVENUE PROFESSIONAL CENTER

1425 Hand Avenue, Ormond Beach, FL 32174



SALE OVERVIEW

AVAILABLE SF: 1,142 - 4,095 SF

SALE PRICE: \$159,880 - \$468,640

LEASE RATE: \$12.00 NNN

YEAR BUILT: 2006

ZONING: PBD 'Planned Business Development'

PROPERTY DESCRIPTION

Office Condos in Ormond Beach.

Units For Sale or Lease.

1,142 to 4,095 SF, contiguous.

Great Hand Avenue location between Clyde Morris Boulevard and Nova Road.

Building and Monument Signage available.

Shell units, improved unit, and turnkey build to suit units available.

Approximately 2.8 miles to Florida Hospital Memorial Medical Center.

Estimated CAM, Real Estate Taxes & Insurance \$4.75 per SF.

AVAILABLE SPACE:

Suite B: 1,142 SF - For Sale \$159,880 or Lease \$12.00 NNN "SHELL"

Suite C: 1,144 SF - For Sale \$160,160 or Lease \$12.00 NNN "SHELL"

Suite D: 1,809 SF - For Sale \$253,260 or Lease \$12.00 NNN "SHELL"

Suite G: 1,197 SF - For Sale \$167,580 or Lease \$12.00 NNN "SHELL"

Suite N: 2,929 SF - For Sale \$468,640 or Lease \$12.00 NNN, former restaurant

SELLER FINANCING AVAILABLE AT 5%. No survey or appraisal needed. No origination fees.



JOHN W. TROST, CCIM

Principal | Senior Advisor
386.301.4581
john.trost@svn.com
FL #BK-0160420

All SVN® Offices Independently Owned & Operated.

The information listed above has been obtained from sources we believe to be reliable, however, we accept no responsibility for its correctness.



FOR SALE OR LEASE | OFFICE CONDOS

HAND AVENUE PROFESSIONAL CENTER

1425 Hand Avenue, Ormond Beach, FL 32174



JOHN W. TROST, CCIM
Principal | Senior Advisor
386.301.4581
john.trost@svn.com
FL #BK-0160420

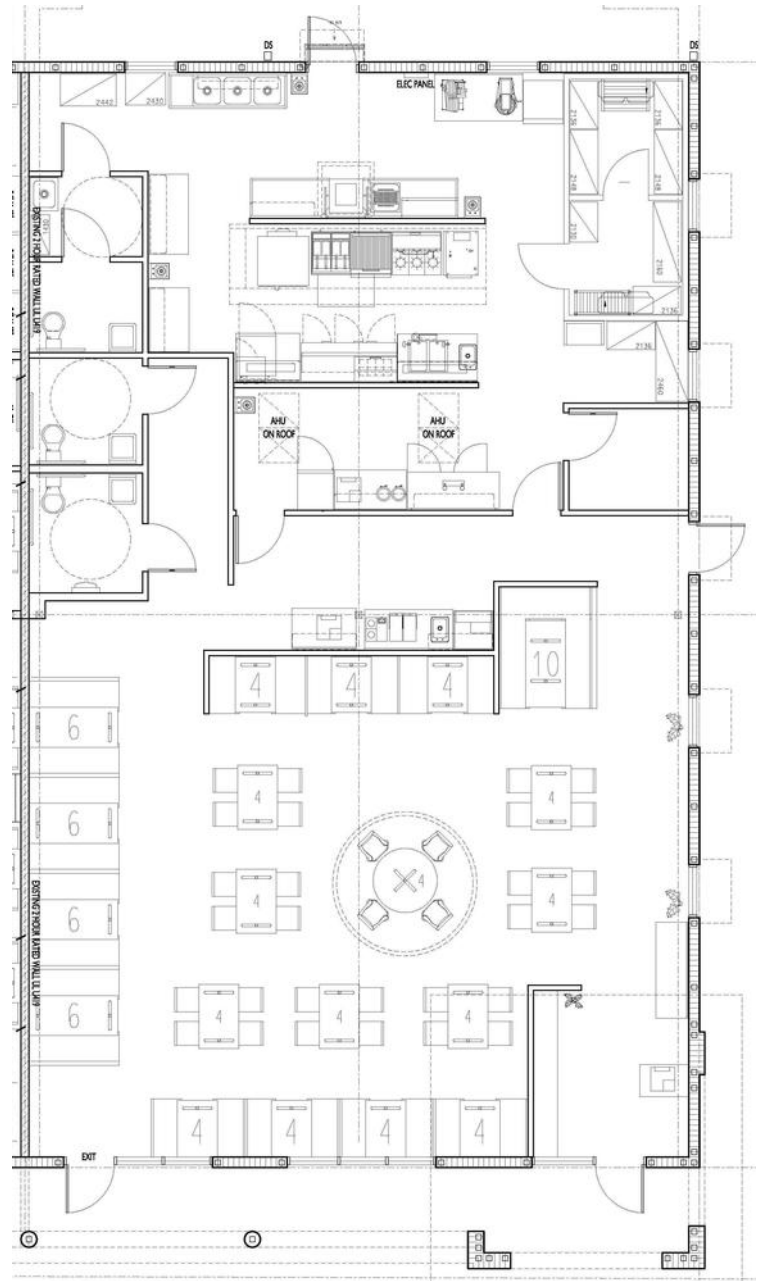
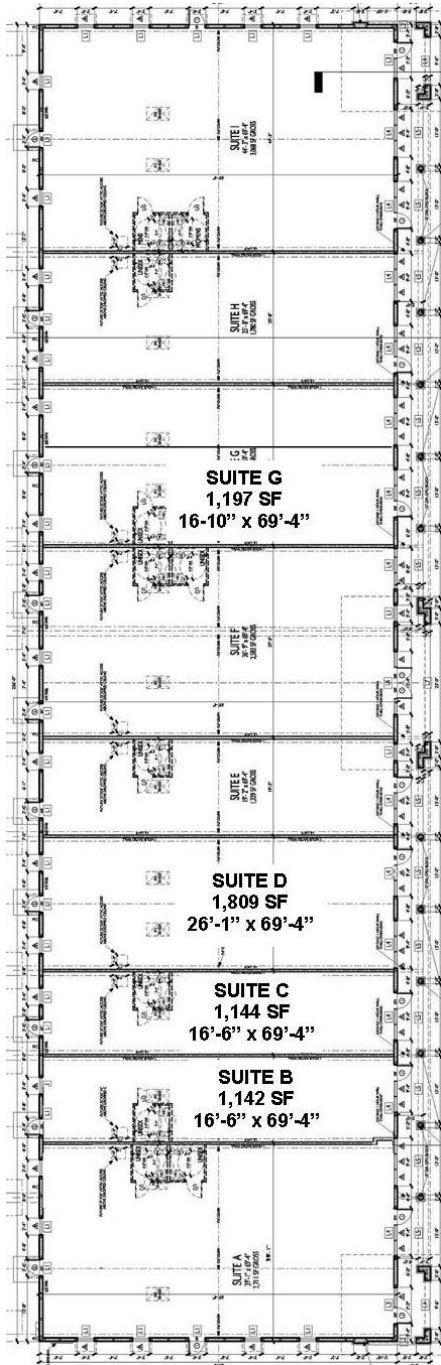
All SVN® Offices Independently Owned & Operated.
The information listed above has been obtained from sources we believe to be reliable, however, we accept no responsibility for its correctness.



FOR SALE OR LEASE | OFFICE CONDOS

HAND AVENUE PROFESSIONAL CENTER

1425 Hand Avenue, Ormond Beach, FL 32174



1 OVERALL FLOOR PLAN SUITE B, C, D & G
Floor Plan Information

2 FLOOR PLAN SUITE N
Floor Plan Information



JOHN W. TROST, CCIM
Principal | Senior Advisor
386.301.4581
john.trost@svn.com
FL #BK-0160420

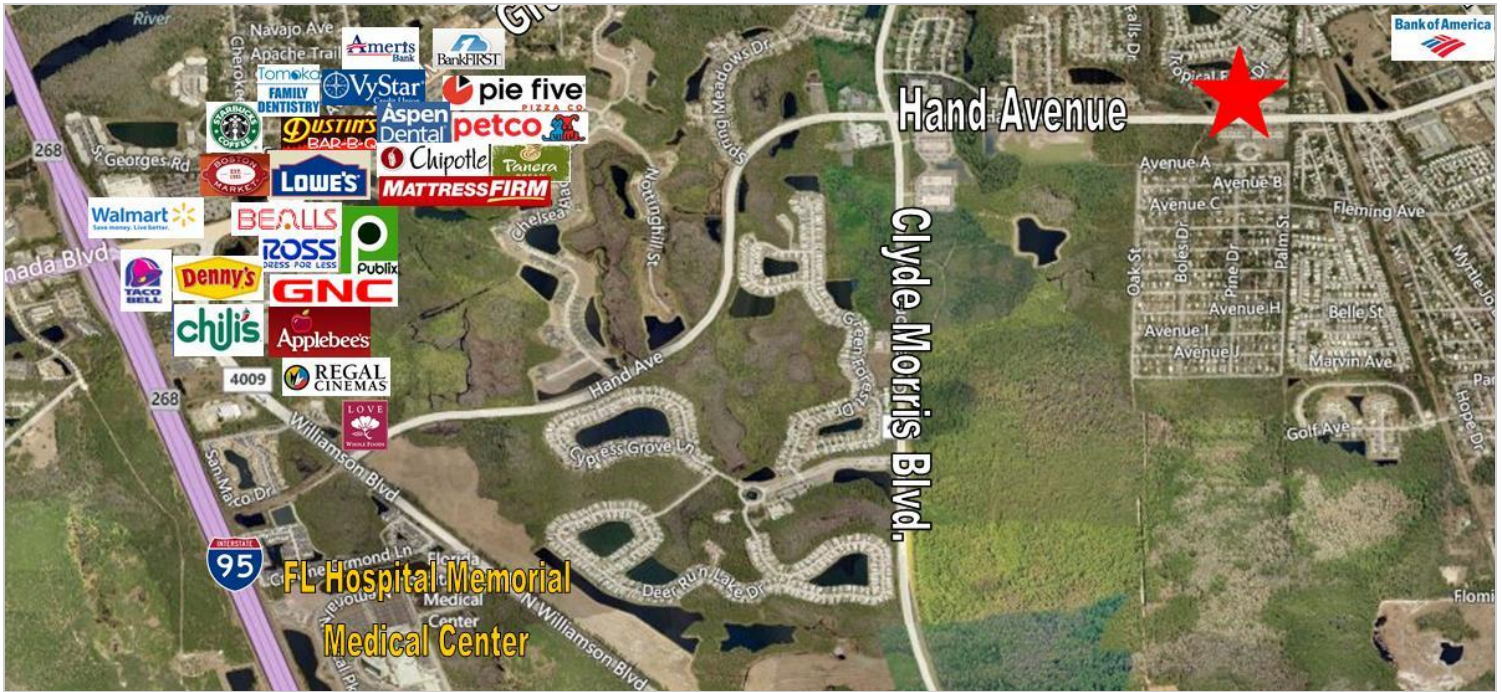
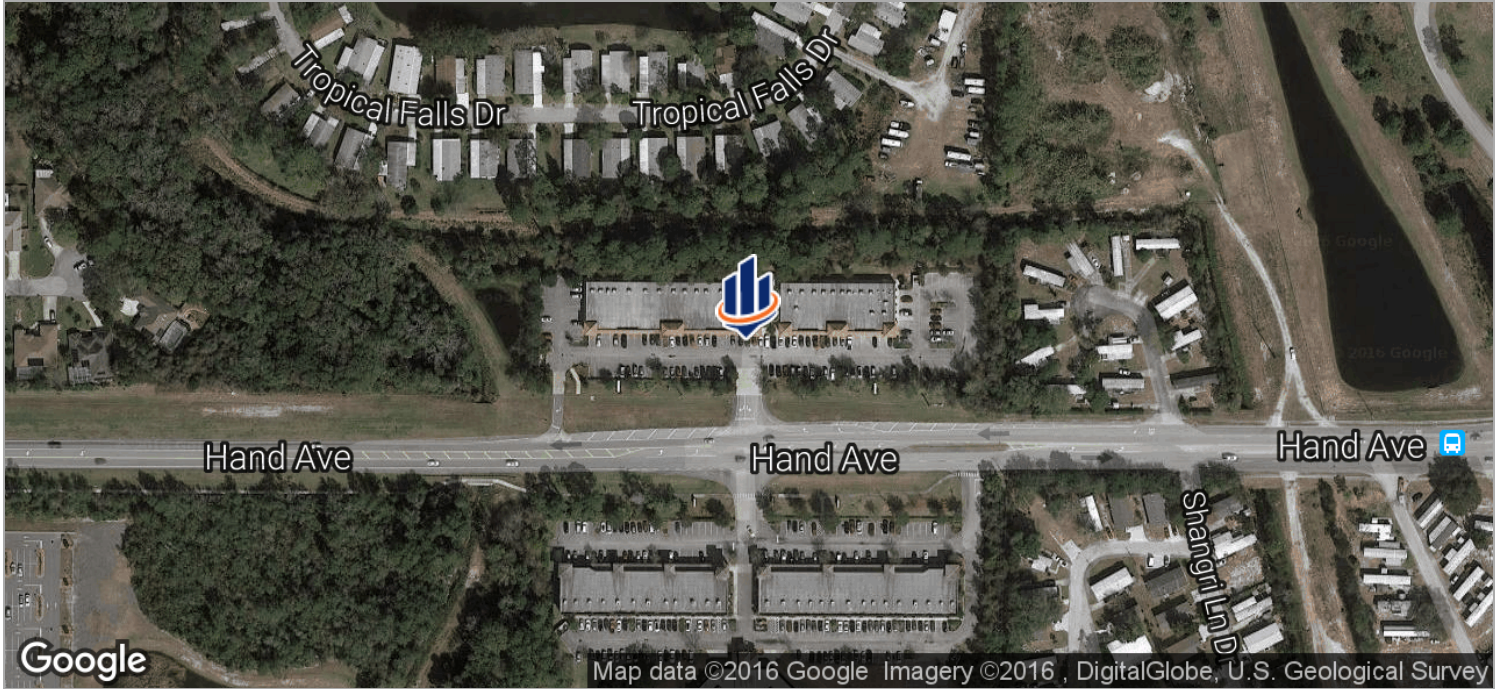
All SVN® Offices Independently Owned & Operated.
The information listed above has been obtained from sources we believe to be reliable, however, we accept no responsibility for its correctness.



FOR SALE OR LEASE | OFFICE CONDOS

HAND AVENUE PROFESSIONAL CENTER

1425 Hand Avenue, Ormond Beach, FL 32174



JOHN W. TROST, CCIM
Principal | Senior Advisor
386.301.4581
john.trost@svn.com
FL #BK-0160420

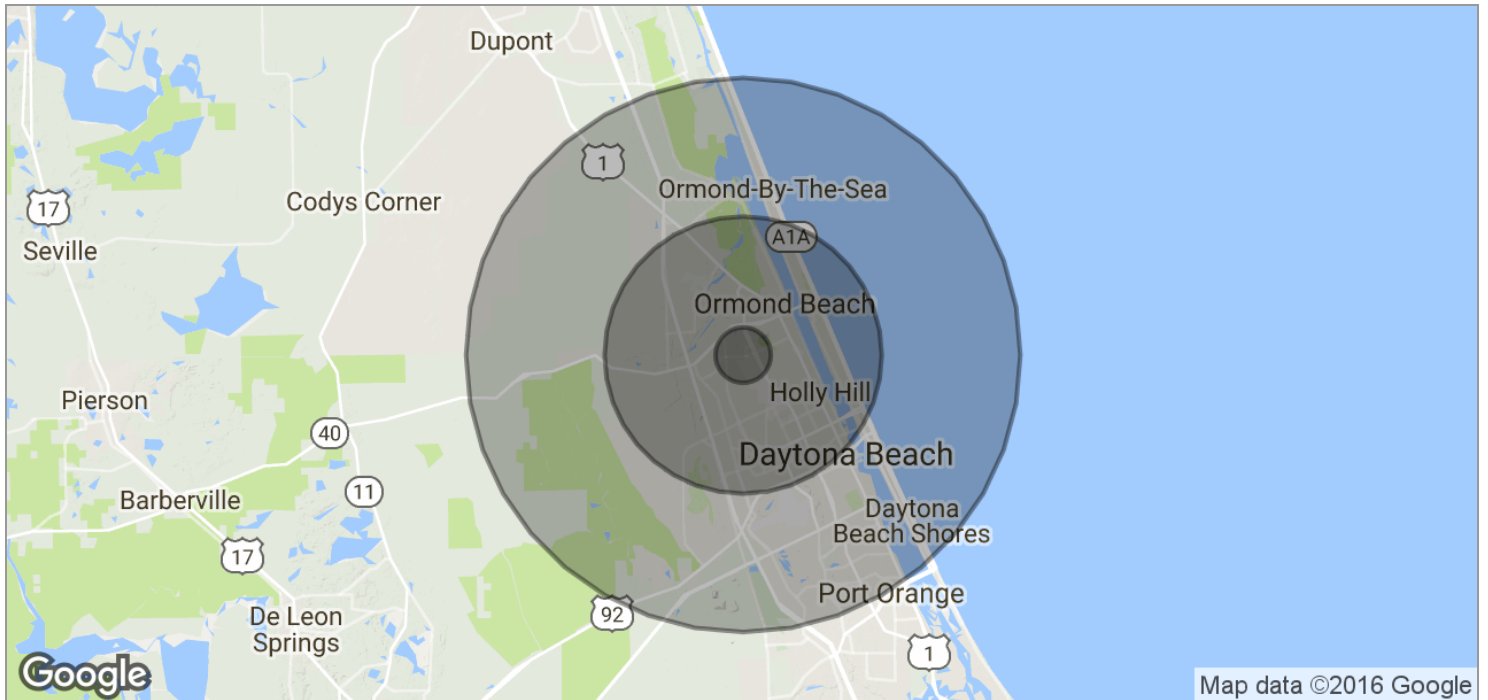
All SVN® Offices Independently Owned & Operated.
The information listed above has been obtained from sources we believe to be reliable, however, we accept no responsibility for its correctness.



FOR SALE OR LEASE | OFFICE CONDOS

HAND AVENUE PROFESSIONAL CENTER

1425 Hand Avenue, Ormond Beach, FL 32174



POPULATION	1 MILE	5 MILES	10 MILES
TOTAL POPULATION	6,338	90,599	181,899
MEDIAN AGE	48.3	43.6	43.4
MEDIAN AGE (MALE)	45.4	42.0	41.8
MEDIAN AGE (FEMALE)	49.9	44.7	45.2
HOUSEHOLDS & INCOME	1 MILE	5 MILES	10 MILES
TOTAL HOUSEHOLDS	2,780	38,876	77,094
# OF PERSONS PER HH	2.3	2.3	2.4
AVERAGE HH INCOME	\$45,236	\$52,950	\$52,940
AVERAGE HOUSE VALUE	\$185,243	\$194,005	\$208,320



JOHN W. TROST, CCIM
 Principal | Senior Advisor
 386.301.4581
 john.trost@svn.com
 FL #BK-0160420

All SVN® Offices Independently Owned & Operated.
 The information listed above has been obtained from sources we believe to be reliable, however, we accept no responsibility for its correctness.