

# GATLIN BLVD

2.43± acres

St. Lucie County, FL

**SOLD!**

LAND FOR SALE



## LOCATION

The property is located on the northwest corner of Brescia Street and Gatlin Blvd.

## SIZE

2.43± acres

## PRICE

\$1,200,000 or \$11.34/sq ft

## ZONING

Residential. FLU is Commercial Highway and Medium Density Residential.

## ROAD FRONTAGE

160± feet on north side of Gatlin Blvd  
435± feet on west side of Brescia Street

## UTILITIES

Water and Sewer are available along Gatlin Blvd.

Offering subject to errors, omission, prior sale or withdrawal without notice.

— Commercial Real Estate Investments | Management | Brokerage | Development | Land

Maury L. Carter & Associates, Inc.  
407-422-3144 | [www.maurycarter.com](http://www.maurycarter.com)



# GATLIN BLVD

2.43± acres

St. Lucie County, FL

**SOLD!**



PROPERTY MAP

— Commercial Real Estate Investments | Management | Brokerage | Development | Land

Maury L. Carter & Associates, Inc.  
407-422-3144 | [www.maurycarter.com](http://www.maurycarter.com)

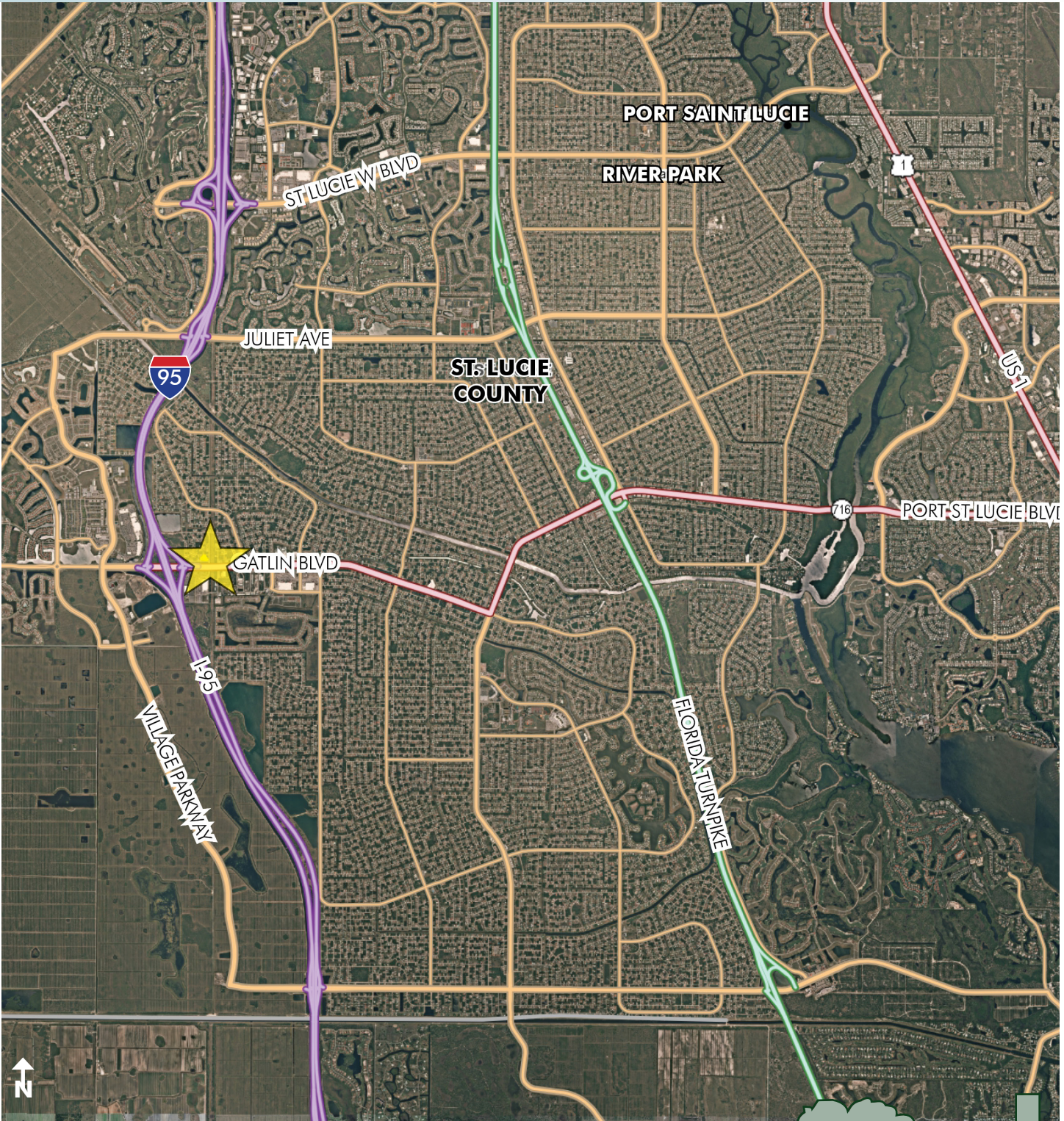


# GATLIN BLVD

2.43± acres

St. Lucie County, FL

**SOLD!**



LOCATION MAP

— Commercial Real Estate Investments | Management | Brokerage | Development | Land

Maury L. Carter & Associates, Inc.  
407-422-3144 | [www.maurycarter.com](http://www.maurycarter.com)

