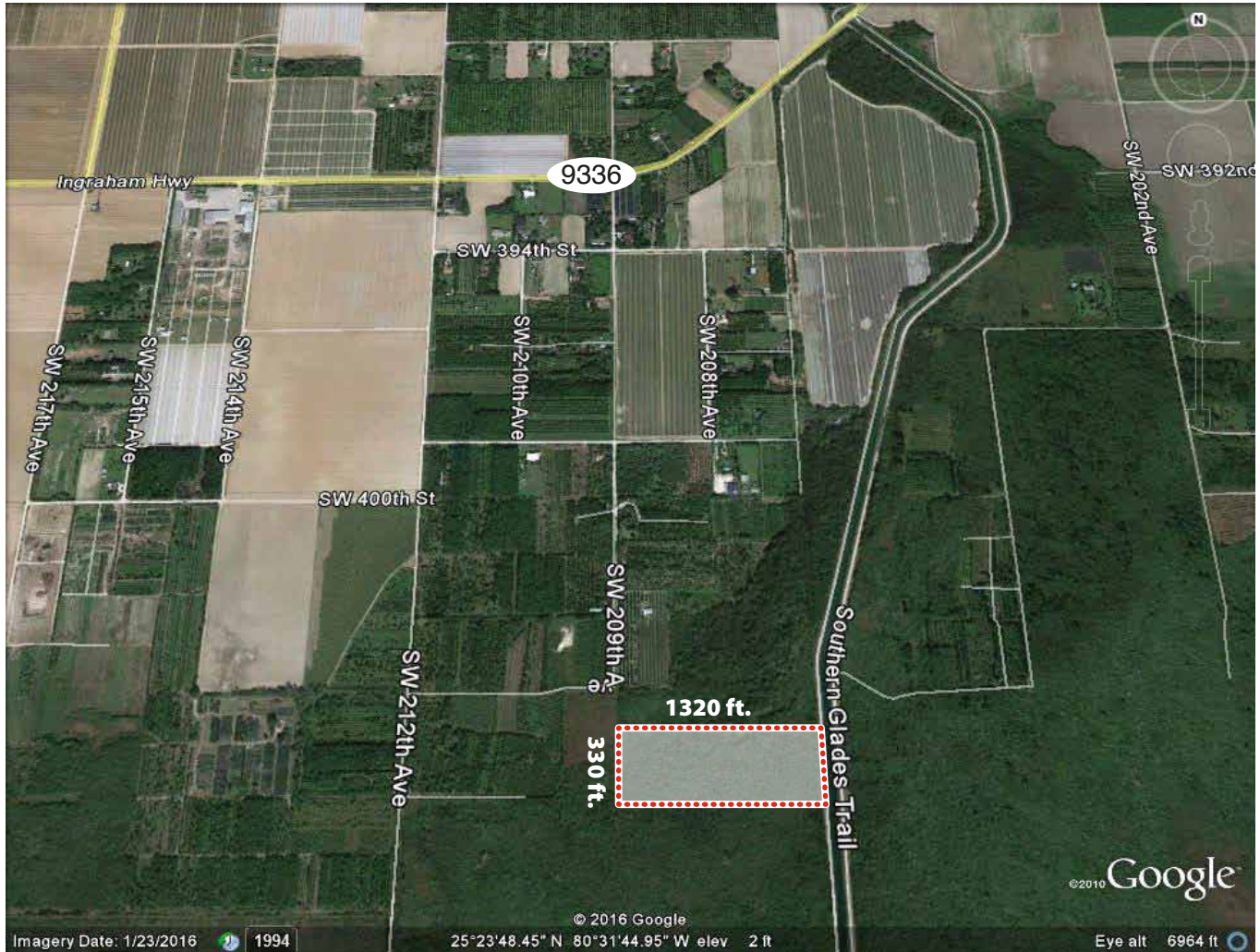


10.18 AC MITIGATION HEAVEN

***** VIRGINAL WETLANDS PLUS NFC *****

40500 S.W. 209 Avenue, Florida City, FL 33034

Miami Dade County Folio # 30-8809-000-0074



- Consisting of three specific soil compositions. 5% Rockdale Limestone Complex: fine sandy loam - shallow phase; 35% Parkwood: fine sand; 60% Perrine Marl: shallow phase.
- Transition zone at upland plate includes 3.1 acres of designated Natural Forest Community.
- Pristine, never disturbed, textbook example of primordial Florida Everglades. Trickling rivulet in dry season at southwest corner.
- Owner terms available

\$195,000



Rick

RICHARD A. SWENTEK, P.A., A.L.C.

305.453.0109

rickswen@bellsouth.net

GLADYS REYES CORNELL

305.619.0223

greyescornell@gmail.com



Cell 305.773.5363

florida1realtyinc.com

103400 Overseas Hwy. Suite 250-D, Key Largo, FL 33037

The information contained herein is deemed accurate however no warranty either expressed or implied is hereby given.