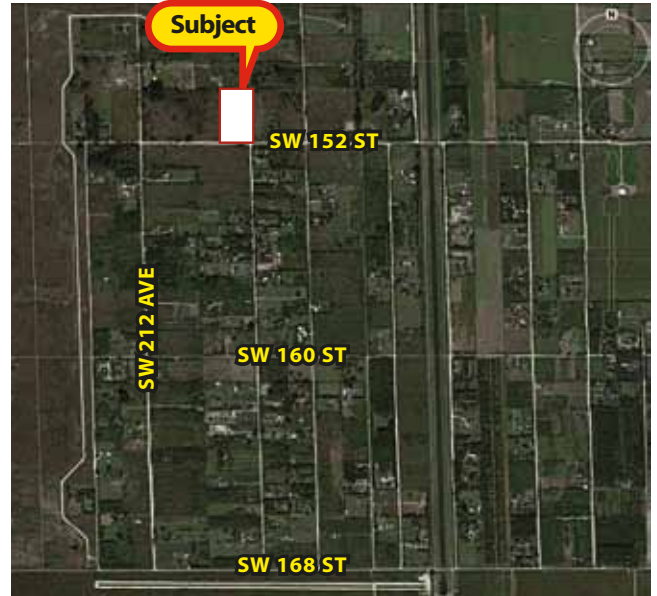
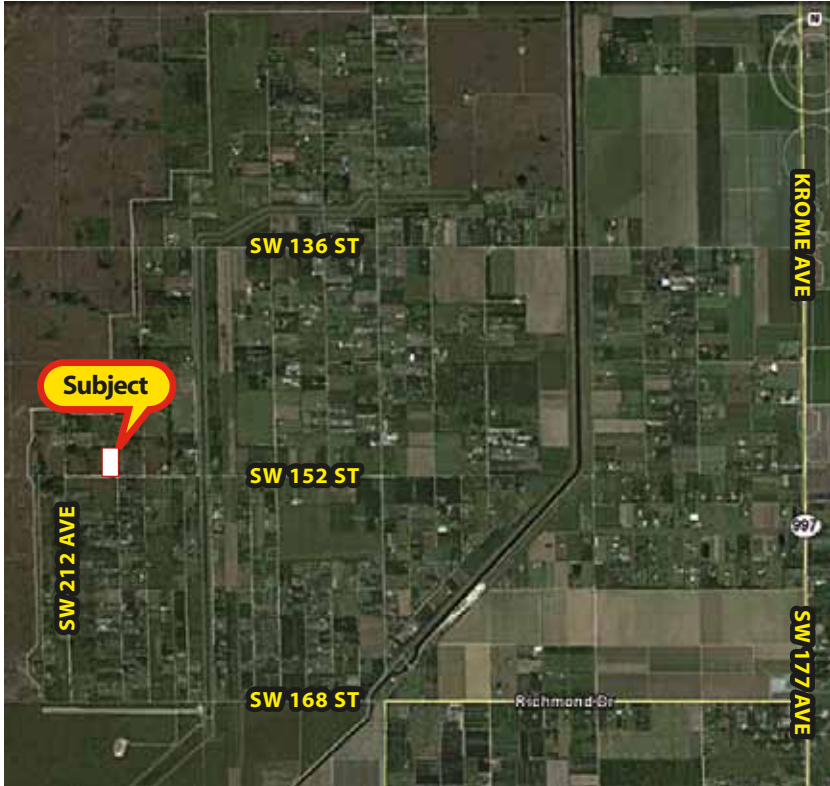


EAST EVERGLADES LAND SALE

***** 5 ACRES • FARM OR FINQUITA *****

**20901 SW 152nd Street, Miami, Florida 33196
Folio # 30-5821-000-0045**



- 330' x 660', corner lot, elevation per USACE runs 7.5 - 8.0 ft. above MSL.
- Rockland(e) soil composition. Relief: nearly level, slight depressions. Depth to bedrock: 0- 6 inches. Internal drainage: rapid when free of high water table.
- Mostly cleared. Previous agriculture production not confirmed.
- \$35,000 down, PMM of \$65,000 @6%, 20 years amortization, \$465.68 per mo., balloon of \$59,466.19 in 3 years.

\$100,000



Richard A. Swentek

RICHARD A. SWENTEK, P.A., A.L.C.

305.453.0109

Cell/Text: 305.773.5363

rickswen@bellsouth.net



florida1realtyinc.com

103400 Overseas Hwy. Suite 250-D, Key Largo, FL 33037

The information contained herein is deemed accurate however no warranty either expressed or implied is hereby given.