

## OFFICE FOR SALE

1543 Kingsley Avenue, Orange Park, FL 32073



### PROPERTY FEATURES

- Kingsley Village Office Unit 2
- Conveniently located near OP Medical Center
- 6 offices, conference rm, mail/copy rm, network/server rm,
- Large waiting/reception area, 2 wet bar/ coffee counters, 2 restrooms
- No assigned parking
- 2065 SF - Built in 1982
- \$150/month Association fee
- \$235,000



**KW COMMERCIAL**  
4465 U.S. Hwy 17,  
Suite 2  
Orange Park, FL 32003

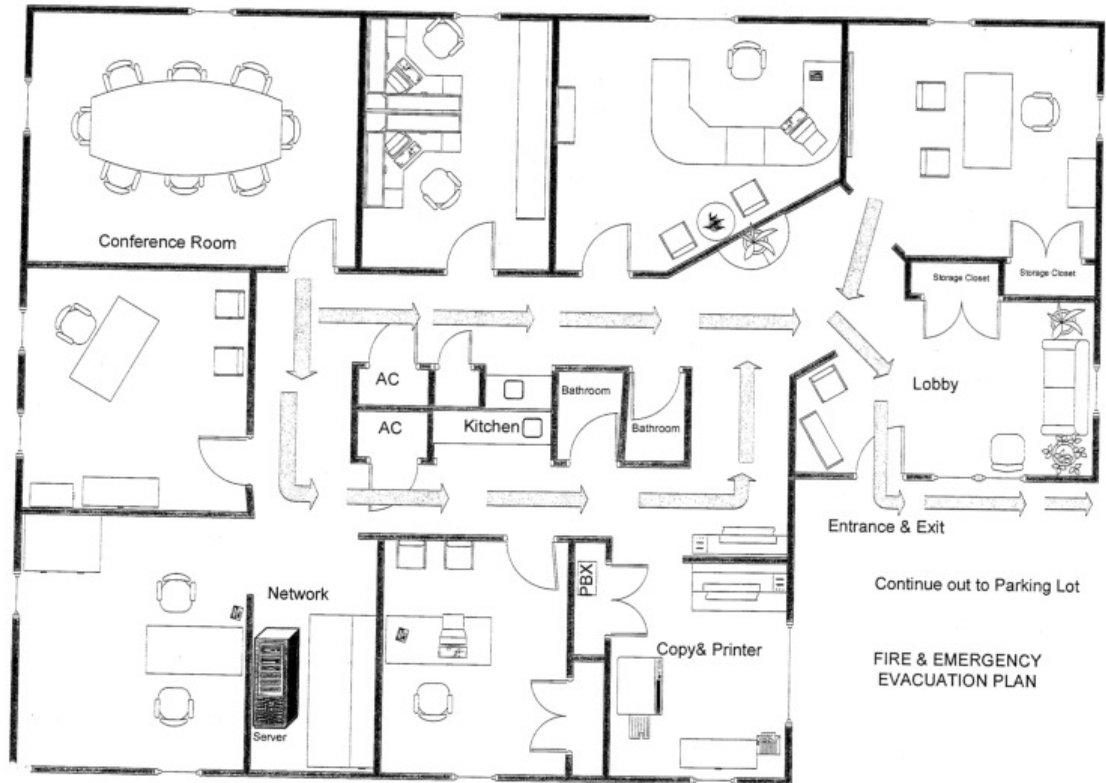
**SANDRA KAHLE**  
Managing Director  
904.838.6446  
skahle@kahlecg.com

**CYNTHIA MCLAIN**  
Associate  
904.545.4195  
cmclain@kahlecg.com

The information contained herein has been obtained from sources deemed reliable. While every reasonable effort has been made to ensure its accuracy, we cannot guarantee it. No responsibility is assumed for any inaccuracies. Readers are encouraged to consult their professional advisors prior to acting on any of the material contained herein.

# OFFICE FOR SALE

1543 Kingsley Avenue, Orange Park, FL 32073



**KW COMMERCIAL**  
4465 U.S. Hwy 17,  
Suite 2  
Orange Park, FL 32003

**SANDRA KAHLE**  
Managing Director  
904.838.6446  
skahle@kahlecg.com

**CYNTHIA MCLAIN**  
Associate  
904.545.4195  
cmclain@kahlecg.com

The information contained herein has been obtained from sources deemed reliable. While every reasonable effort has been made to ensure its accuracy, we cannot guarantee it. No responsibility is assumed for any inaccuracies. Readers are encouraged to consult their professional advisors prior to acting on any of the material contained herein.

# OFFICE FOR SALE

1543 Kingsley Avenue, Orange Park, FL 32073



**KW COMMERCIAL**  
4465 U.S. Hwy 17,  
Suite 2  
Orange Park, FL 32003

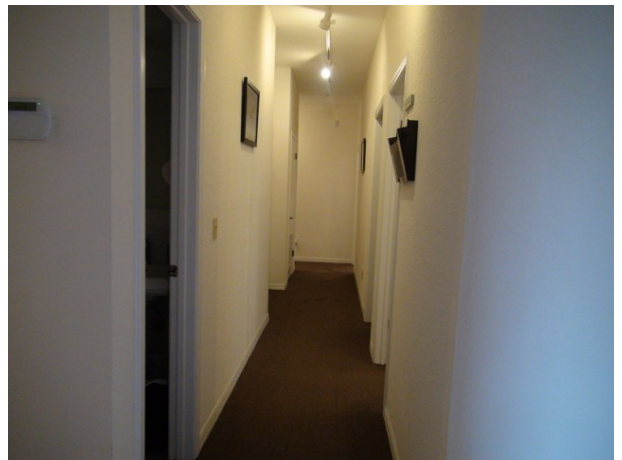
**SANDRA KAHLE**  
Managing Director  
904.838.6446  
skahle@kahlecg.com

**CYNTHIA MCLAIN**  
Associate  
904.545.4195  
cmclain@kahlecg.com

The information contained herein has been obtained from sources deemed reliable. While every reasonable effort has been made to ensure its accuracy, we cannot guarantee it. No responsibility is assumed for any inaccuracies. Readers are encouraged to consult their professional advisors prior to acting on any of the material contained herein.

# OFFICE FOR SALE

1543 Kingsley Avenue, Orange Park, FL 32073



**KW COMMERCIAL**  
4465 U.S. Hwy 17,  
Suite 2  
Orange Park, FL 32003

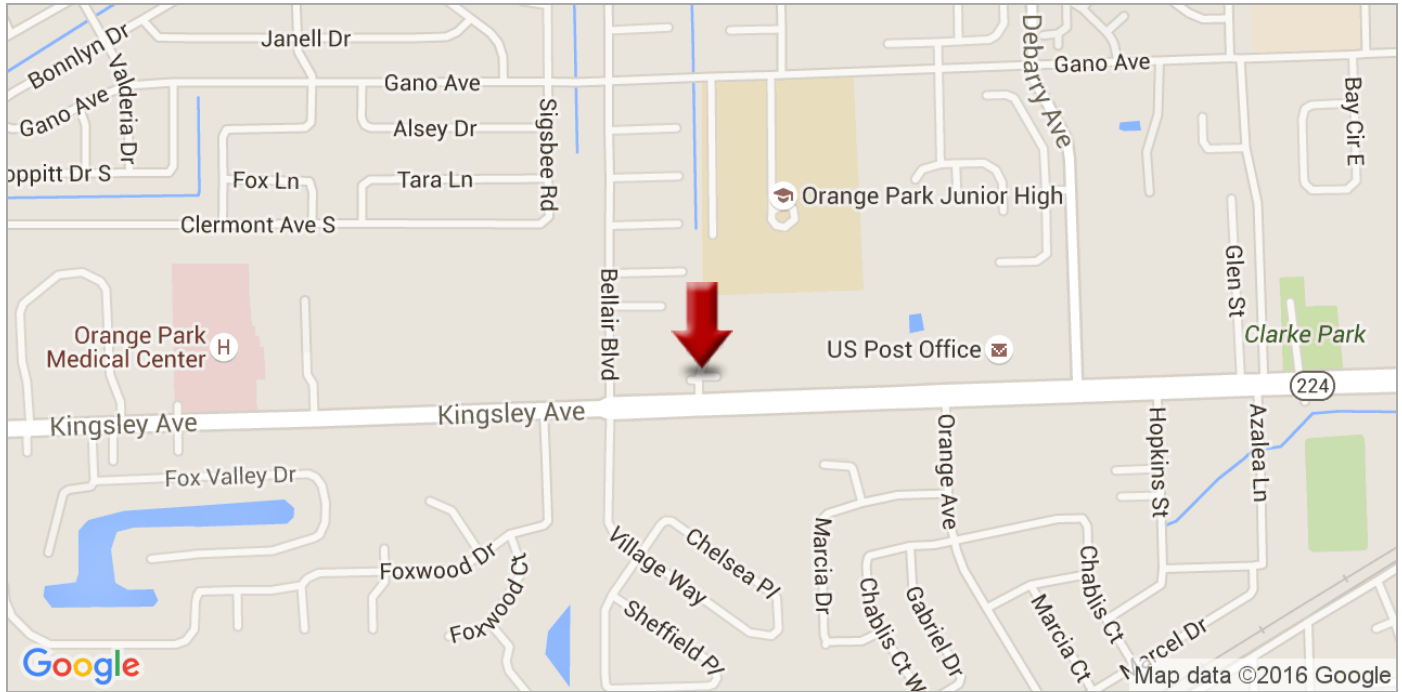
**SANDRA KAHLE**  
Managing Director  
904.838.6446  
skahle@kahlecg.com

**CYNTHIA MCLAIN**  
Associate  
904.545.4195  
cmclain@kahlecg.com

The information contained herein has been obtained from sources deemed reliable. While every reasonable effort has been made to ensure its accuracy, we cannot guarantee it. No responsibility is assumed for any inaccuracies. Readers are encouraged to consult their professional advisors prior to acting on any of the material contained herein.



1543 Kingsley Avenue, Orange Park, FL 32073



**KW COMMERCIAL**  
4465 U.S. Hwy 17,  
Suite 2  
Orange Park, FL 32003

**SANDRA KAHLE**  
Managing Director  
904.838.6446  
skahle@kahlecg.com

**CYNTHIA MCLAIN**  
Associate  
904.545.4195  
cmclain@kahlecg.com

The information contained herein has been obtained from sources deemed reliable. While every reasonable effort has been made to ensure its accuracy, we cannot guarantee it. No responsibility is assumed for any inaccuracies. Readers are encouraged to consult their professional advisors prior to acting on any of the material contained herein.