

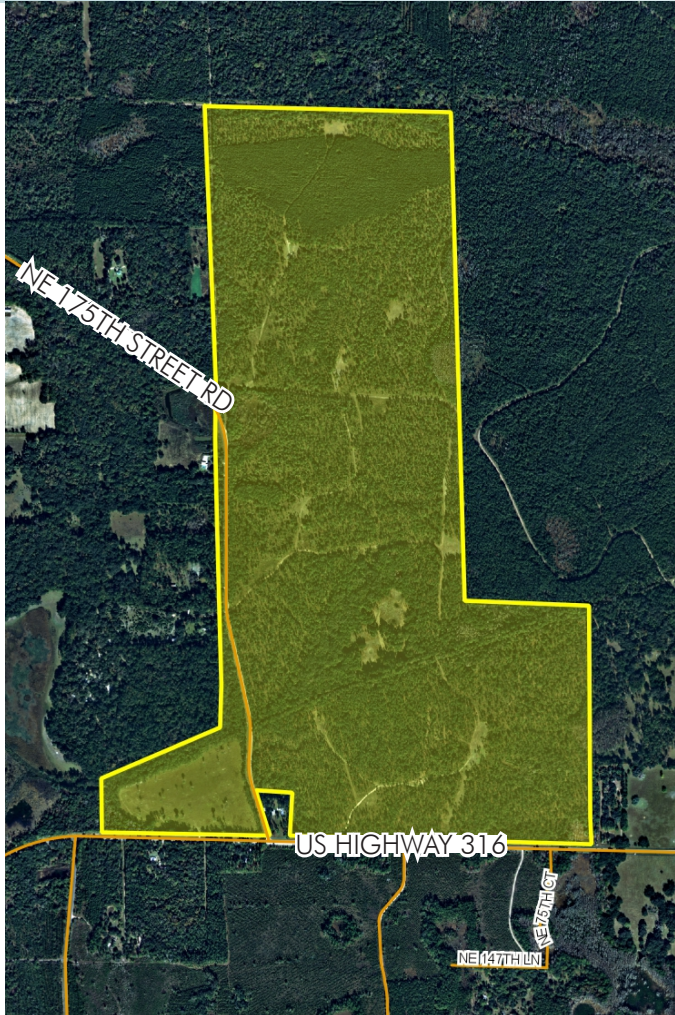
# NE MARION COUNTY AG LAND

591 ± acres

Marion County, FL

**SOLD!**

LAND FOR SALE



## LOCATION/DESCRIPTION

Located on the north side of County Road 316, approximately 5 miles west of County Road 315 and 5 miles southeast of US Highway 301 in northeast Marion County. Ideal for recreation, country living, equestrian estate, timber, hunting, cattle ranching, potential other agricultural uses.

## SIZE

591 ± acres

## PRICE

NOW \$1,462,000 (\$2,475/acre)

*67% Reduction in price!*

WAS \$4,500,000 (\$7,614/acre)

## ZONING/FUTURE LAND USE

A-1 - General Agricultural. Minimum lot size of 10 acres.

## UTILITIES

Septic and well

## ROAD FRONTAGE

5,352' ± on N side of CR 316

4,200' ± on E side of NE 175th St.\*

2,400' ± on W side of NE 175th St.\*

\*Pine Church Road

— Commercial Real Estate Investments | Management | Brokerage | Development | Land

Maury L. Carter & Associates, Inc.

407-422-3144 | [www.maurycarter.com](http://www.maurycarter.com)

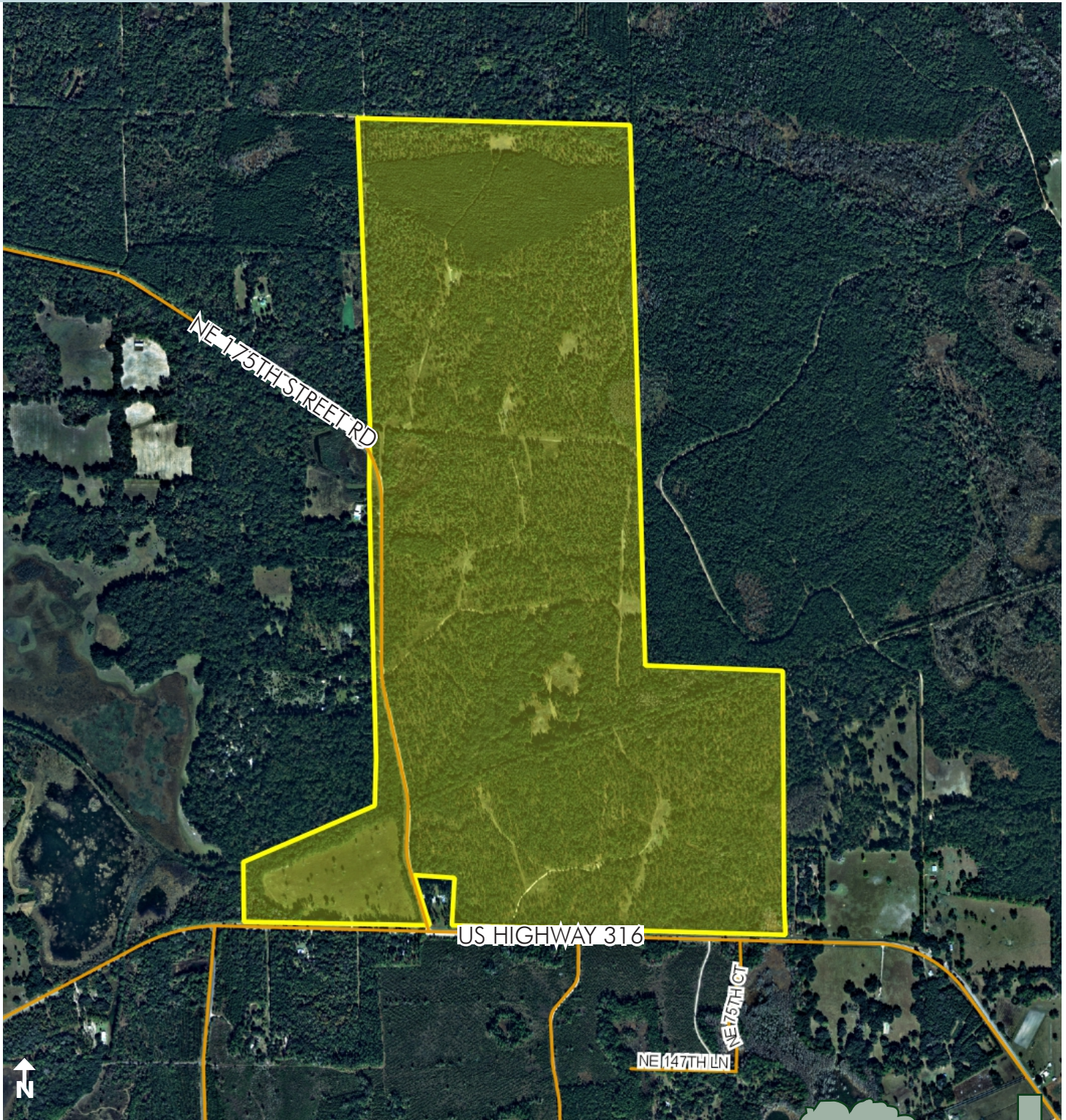


# NE MARION COUNTY AG LAND

591 ± acres

Marion County, FL

**SOLD!**



PROPERTY MAP

— Commercial Real Estate Investments | Management | Brokerage | Development | Land —

Maury L. Carter & Associates, Inc.  
407-422-3144 | [www.maurycarter.com](http://www.maurycarter.com)

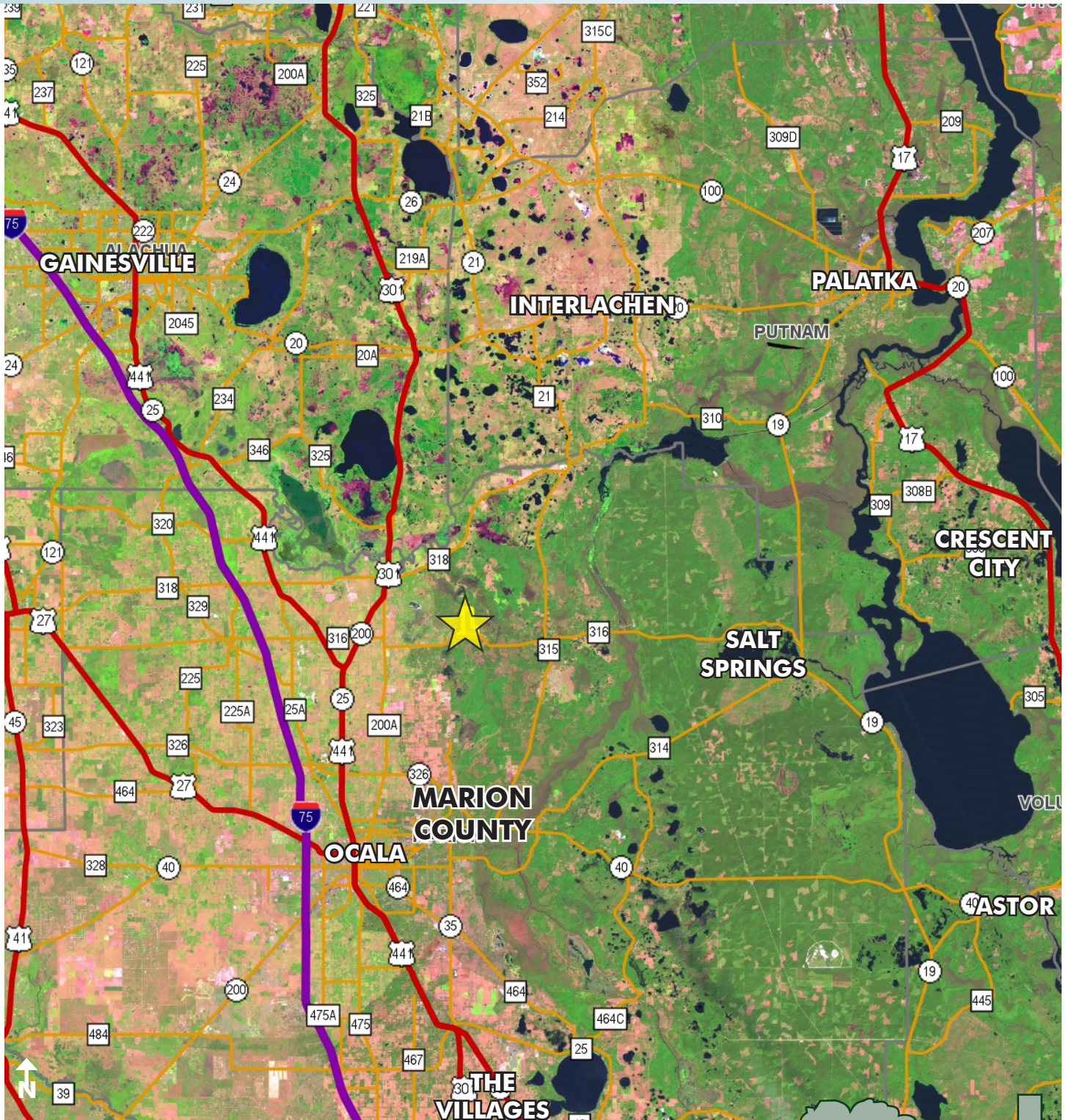


# NE MARION COUNTY AG LAND

591 ± acres

Marion County, FL

**SOLD!**



LOCATION MAP

— Commercial Real Estate Investments | Management | Brokerage | Development | Land

Maury L. Carter & Associates, Inc.  
407-422-3144 | [www.maurycarter.com](http://www.maurycarter.com)



