

# COMMERCIAL CORNER

1.7± ACRES FOR SALE



14505 MAX HOOKS ROAD, GROVELAND, FL 34736

## HIGHLIGHTS:

- 1.7± Acres Commercial Site
- Zoned C-1, City of Groveland
- Located at the Northwest Corner of SR 50 and Max Hooks Road
- Dimensions: Frontage 256 ft, Depth 380 ft
- Full access median-cut and deceleration lane
- Asking Price: **\$395,000**

2015 Demographics	1 Mile	3 Miles	5 Miles
Population	2,846	13,223	50,684
Median Household Income	\$57,863	\$55,432	\$57,188

Traffic Counts	
W. Colonial Drive. (W. of Max Hooks Rd.)	20,872 AADT

## CONTACT:

DARRYL DOTTEROW, CCIM  
Senior Vice President, Ext. 114  
drdotherow@realtycapitalfl.com



605 E. Robinson St., Suite 500 • Orlando, FL 32801  
P 407.843.7070 • F 407.843.2070 • [realtycapitalfl.com](http://realtycapitalfl.com)

No warranty or representation, express or implied, is made as to the accuracy of the information contained herein, and same is submitted subject to errors, omissions, change of price, rental or other conditions, withdrawal without notice, and to any special listing conditions imposed by our principals.

# AERIALS

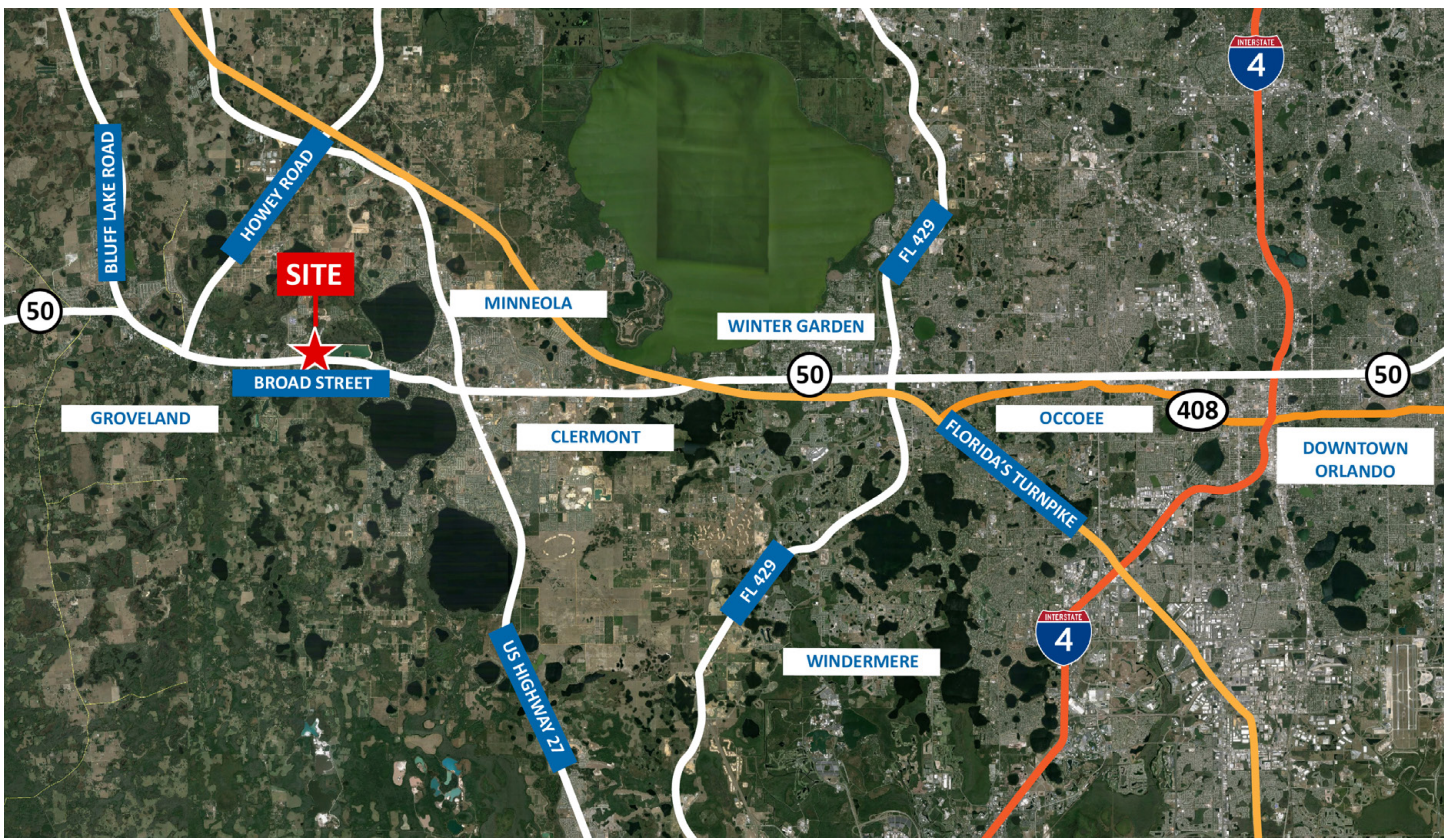


605 E. Robinson St., Suite 500 • Orlando, FL 32801 • P 407.843.7070 • F 407.843.2070

[realtycapitalfl.com](http://realtycapitalfl.com)

No warranty or representation, express or implied, is made as to the accuracy of the information contained herein, and same is submitted subject to errors, omissions, change of price, rental or other conditions, withdrawal without notice, and to any special listing conditions imposed by our principals.

# SITE LOCATION MAPS



605 E. Robinson St., Suite 500 • Orlando, FL 32801 • P 407.843.7070 • F 407.843.2070

[realtycapitalfl.com](http://realtycapitalfl.com)

No warranty or representation, express or implied, is made as to the accuracy of the information contained herein, and same is submitted subject to errors, omissions, change of price, rental or other conditions, withdrawal without notice, and to any special listing conditions imposed by our principals.