

**AVISON  
YOUNG**



**13,704± RSF - Ideal For Owner / User**

# For Sale

**707 Platinum Point**  
Lake Mary, FL 32746

For More Information, Contact:

**Greg Morrison, CCIM, SIOR**  
Principal

O 407.440.6640  
C 407.257.8320

[greg.morrison@avisonyoung.com](mailto:greg.morrison@avisonyoung.com)

**Lawson Dann**  
Senior Vice President

O 407.440.6646  
C 407.342.4698

[lawson.dann@avisonyoung.com](mailto:lawson.dann@avisonyoung.com)





## Property Highlights:

- Two-Story Office Building located in Stirling Plaza with frontage on Rinehart Road
- Leading edge technology and infrastructure with high-end finishes throughout
- Monument and Building Signage available
- Generous parking at a ratio of 5 / 1,000 RSF
- Unparalleled access to Interstate-4, S.R. 417, S.R. 46 and the new S.R. 429 extension
- Minutes to Colonial TownPark, Seminole Town Centre, excellent housing and SunRail
- List Price: \$2,535,000

# 707 Platinum Point

Lake Mary, FL 32746



Complete In 2021

Seminole  
Town Centre

Colonial  
TownPark

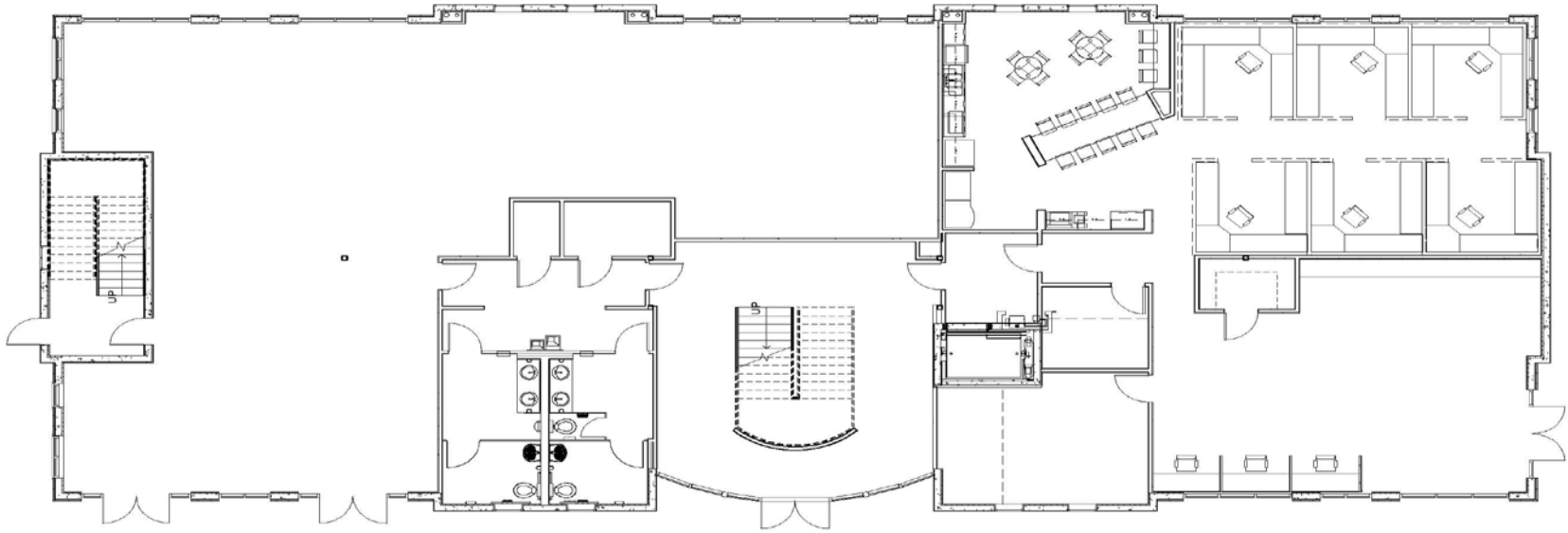
707  
Platinum Point

International Parkway

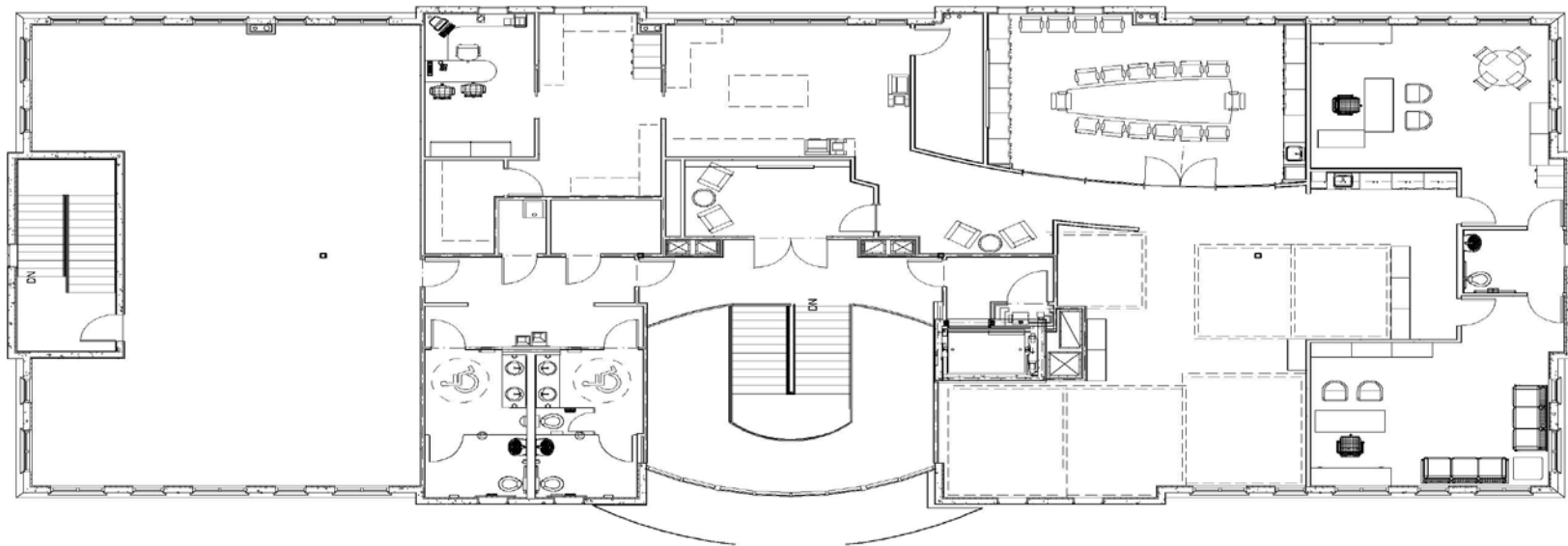
Rinehart Road



3.2 Miles



First Floor



Second Floor