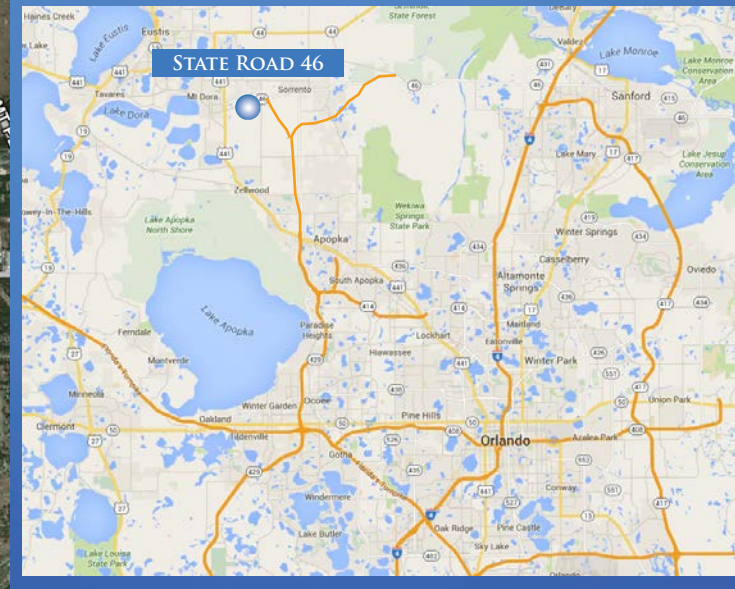
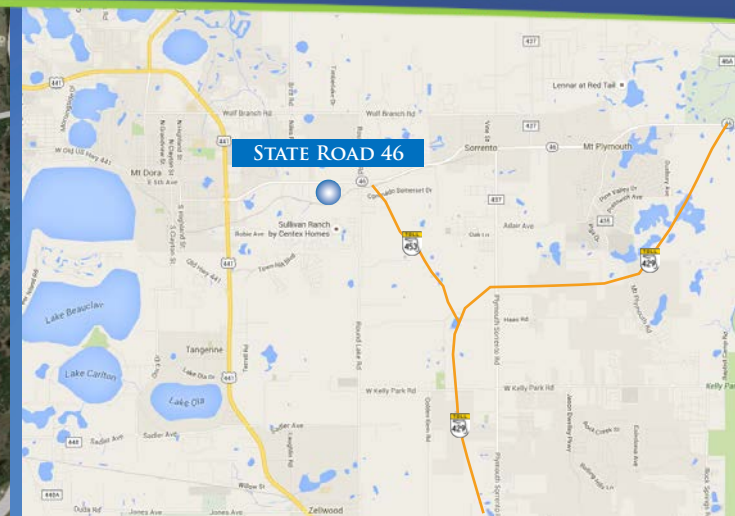
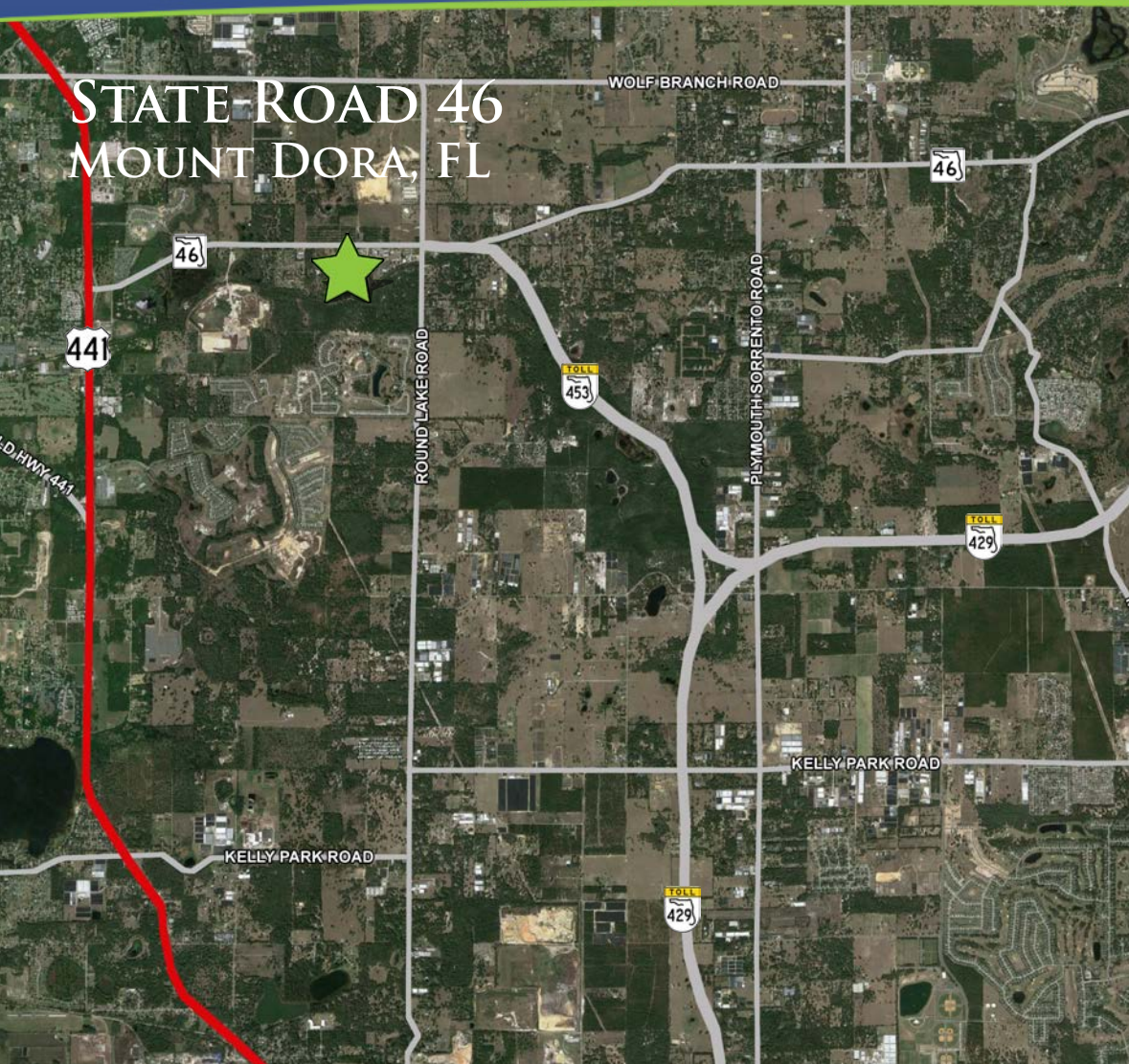


# FOR SALE

COMMITMENT. INTEGRITY. TEAM. EXCELLENCE.



MATT SULLIVAN, SIOR, CCIM  
Managing Director, Principal  
matt.sullivan@citepartners.com  
407.930.1802

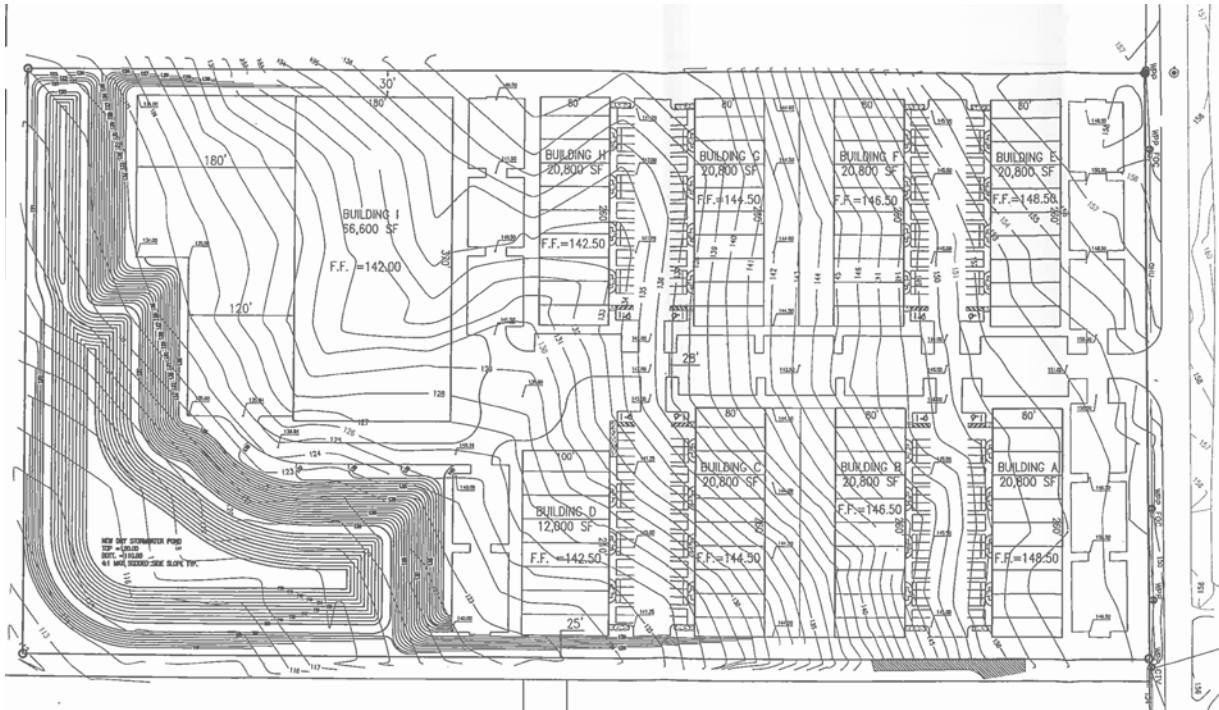
WILSON MCDOWELL, SIOR, CCIM  
Managing Director, Principal  
wilson.mcdowell@citepartners.com  
407.930.1801

BOBBY ISOLA, CCIM  
Director, Principal  
bobby.isola@citepartners.com  
407.930.1804





## SITE PLAN



# STATE ROAD 46

## THE PROPERTY

- 20.00 acres
- Zoned LM, Light Industrial District, Lake County
- Industrial uses include manufacturing, assembly, packaging, or fabrication of materials; warehousing; publishing plants; medical/biomedical operations; automotive/mechanical repair; and paint and body shops. Other uses include professional office; restaurant; convenience store; and self-service storage
- 655' frontage on State Road 46
- Located 16 miles west of I-4 and 30 miles east of I-75
- **Less than one mile to access TR 429 via the new TR 453 interchange**

## THE PRICE

- \$750,000 (\$37,500 per acre)

MATT SULLIVAN, SIOR, CCIM  
Managing Director, Principal  
matt.sullivan@citepartners.com  
407.930.1802

WILSON MCDOWELL, SIOR, CCIM  
Managing Director, Principal  
wilson.mcdowell@citepartners.com  
407.930.1801

BOBBY ISOLA, CCIM  
Director, Principal  
bobby.isola@citepartners.com  
407.930.1804

CITE PARTNERS  
100 South Orange Ave., Suite 500  
Orlando, FL 32801  
www.citepartners.com

### DISCLAIMER:

This document has been prepared by Cite Partners for advertising and general information only. Cite Partners makes no guarantees, representations or warranties of any kind, expressed or implied, regarding the information including, but not limited to, warranties of content, accuracy and reliability. Any interested party should undertake their own inquiries as to the accuracy of the information. Cite Partners excludes unequivocally all inferred or implied terms, conditions and warranties arising out of this document and excludes all liability for loss and damages arising therefrom. This publication is the copyrighted property of Cite Partners and/or its licensor(s). All rights reserved.