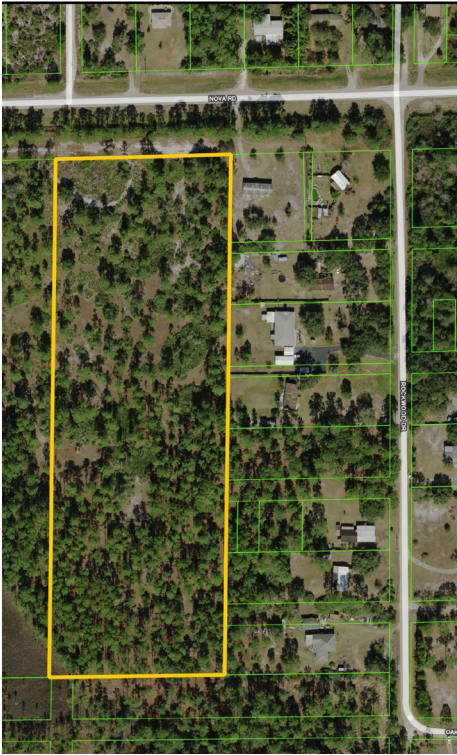


RESIDENTIAL LAND ON NOVA ROAD

11.23± acres
Osceola County, FL

SOLD!

LAND FOR SALE



LOCATION/DESCRIPTION

Located at 6716 Nova Road in St. Cloud, FL near the future extension of Osceola Parkway, The Northeast Connector Highway, which will connect to SR 417 all the way to Florida's Turnpike. Vacant land zoned residential. Property can be subdivided. Two adjoining lots also available.

SIZE

11.23± acres

PRICE

\$425,000

ZONING

R1, Residential.

UTILITIES

Well and septic available on site.

Offering subject to errors, omission, prior sale or withdrawal without notice.

— Commercial Real Estate Investments | Management | Brokerage | Development | Land

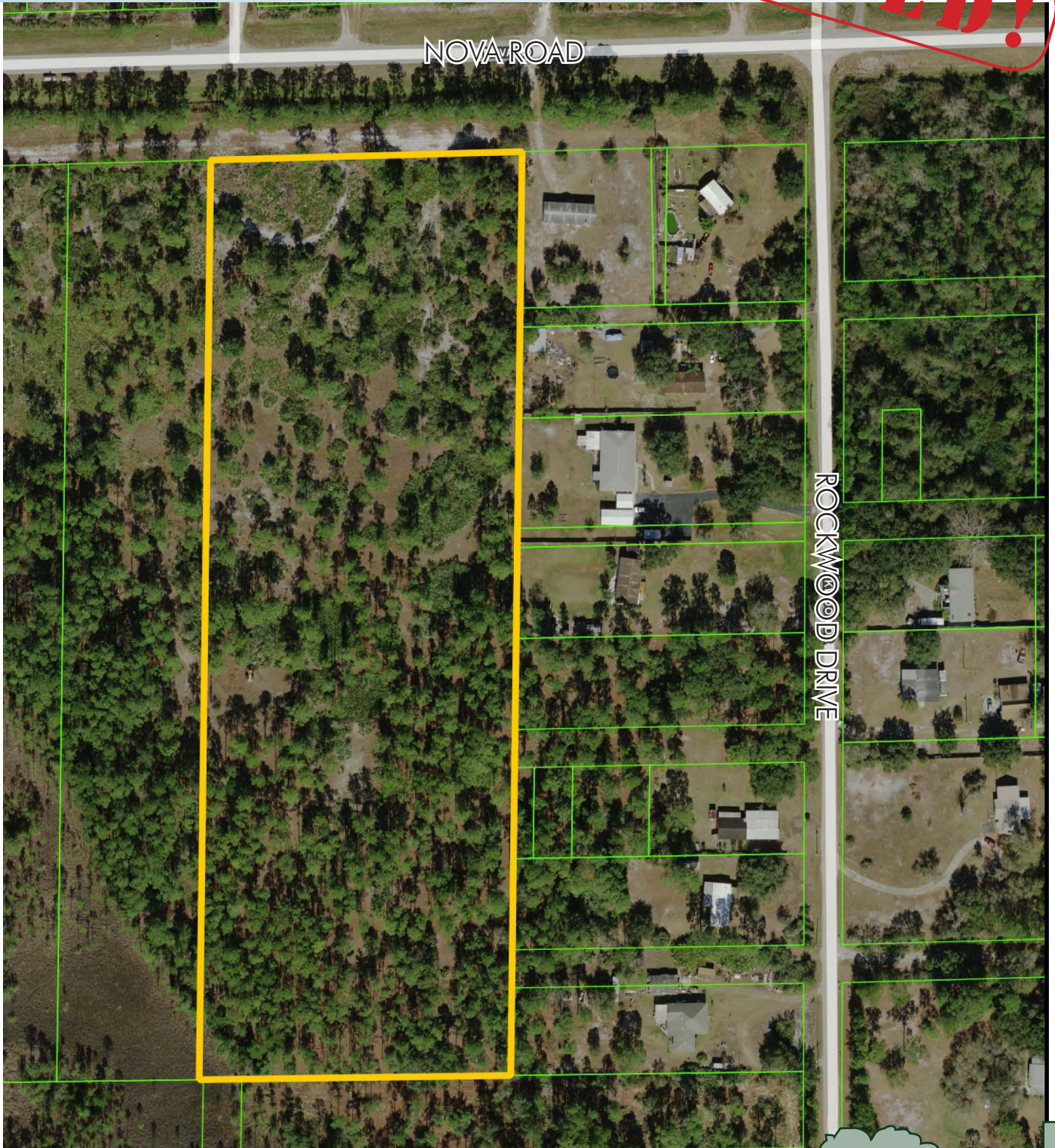
Maury L. Carter & Associates, Inc.
407-422-3144 | www.maurycarter.com



RESIDENTIAL LAND ON NOVA ROAD

11.23± acres
Osceola County, FL

SOLD!



PROPERTY MAP

— Commercial Real Estate Investments | Management | Brokerage | Development | Land

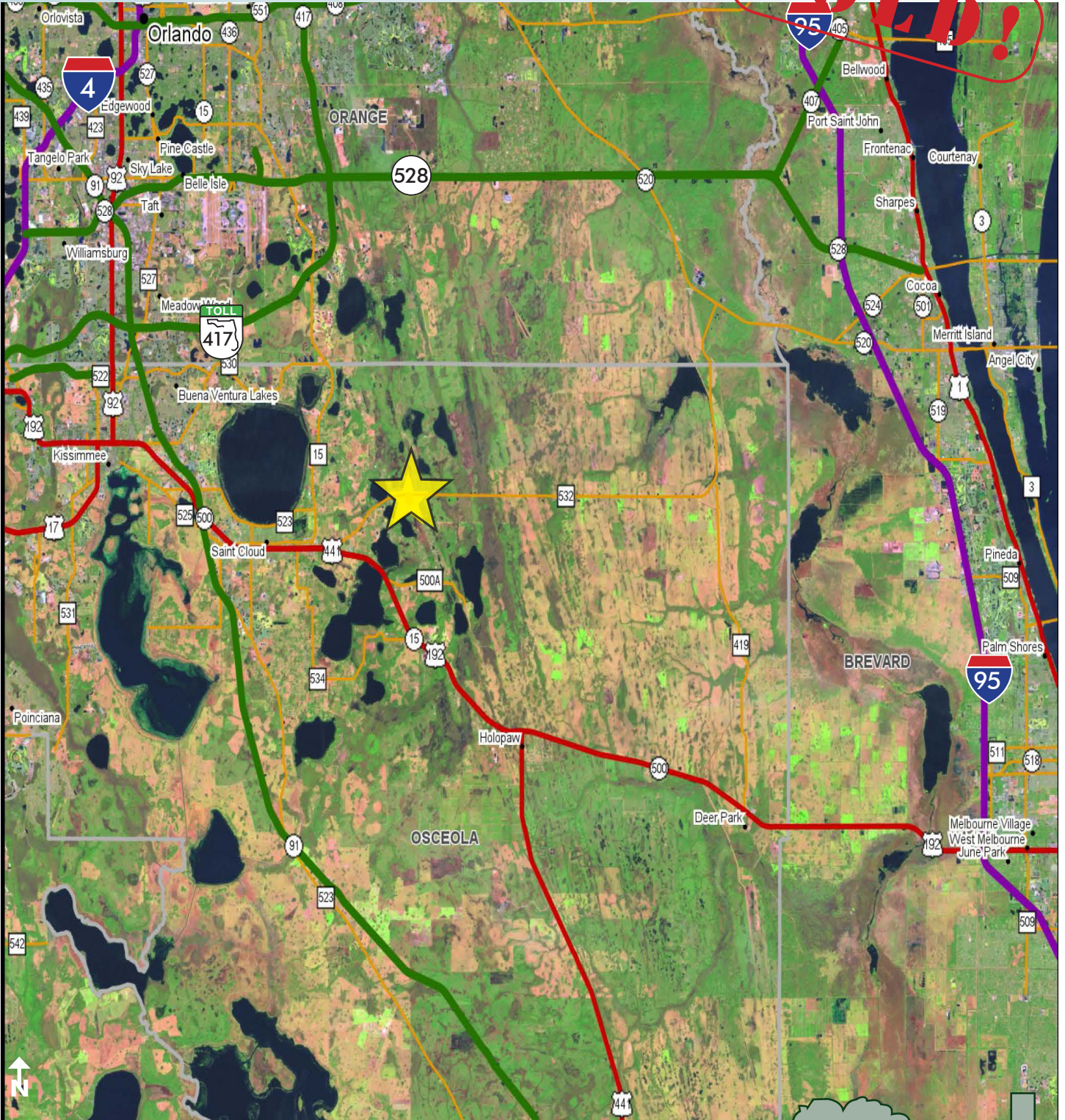
Maury L. Carter & Associates, Inc.
407-422-3144 | www.maurycarter.com



RESIDENTIAL LAND ON NOVA ROAD

11.23± acres
Osceola County, FL

SOLD!



LOCATION MAP

— Commercial Real Estate Investments | Management | Brokerage | Development | Land

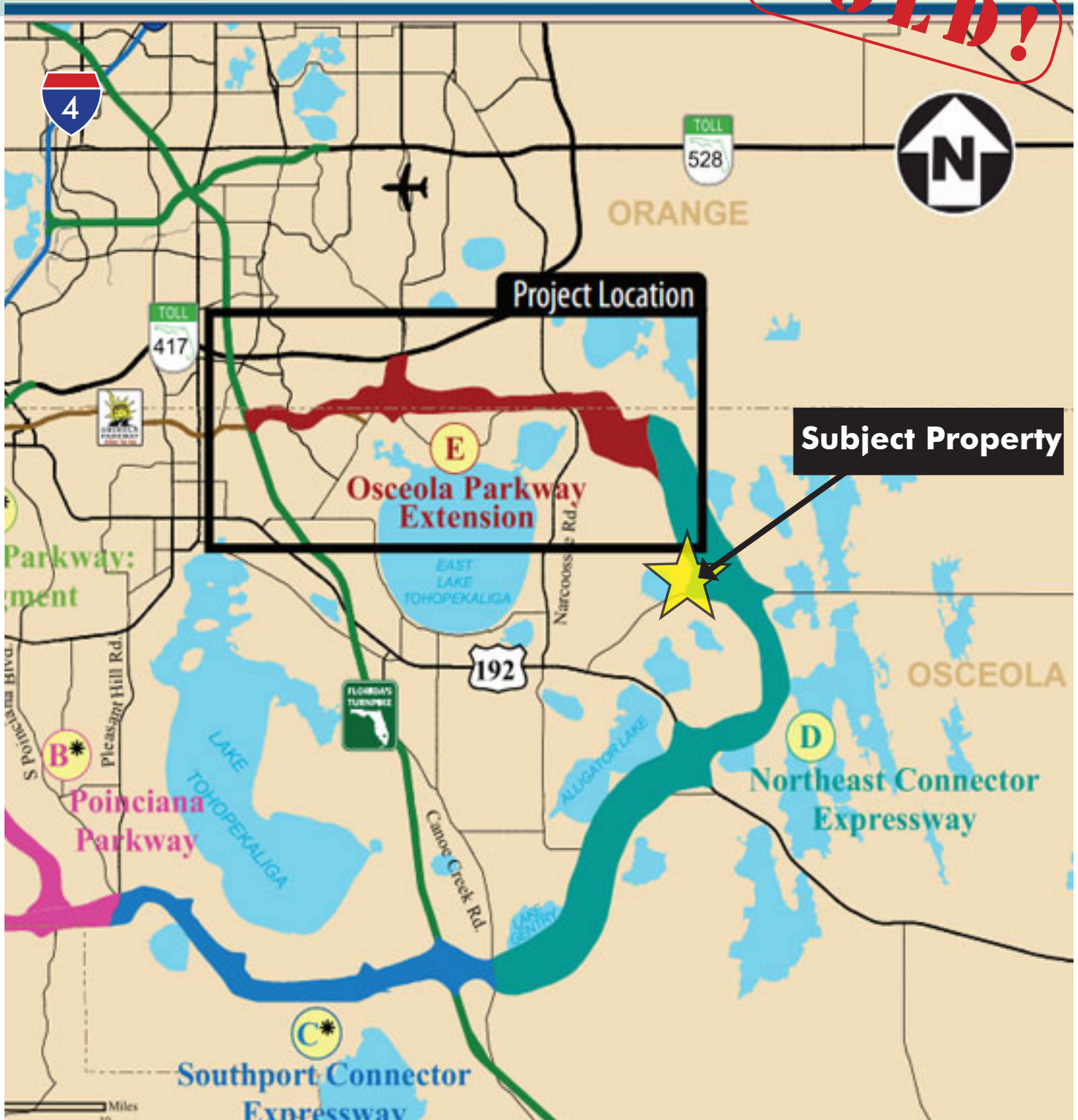
Maury L. Carter & Associates, Inc.
407-422-3144 | www.maurycarter.com



RESIDENTIAL LAND ON NOVA ROAD

11.23± acres
Osceola County, FL

SOLD!



OSCEOLA COUNTY BELTWAY SYSTEM PLAN

— Commercial Real Estate Investments | Management | Brokerage | Development | Land

Maury L. Carter & Associates, Inc.
407-422-3144 | www.maurycarter.com

