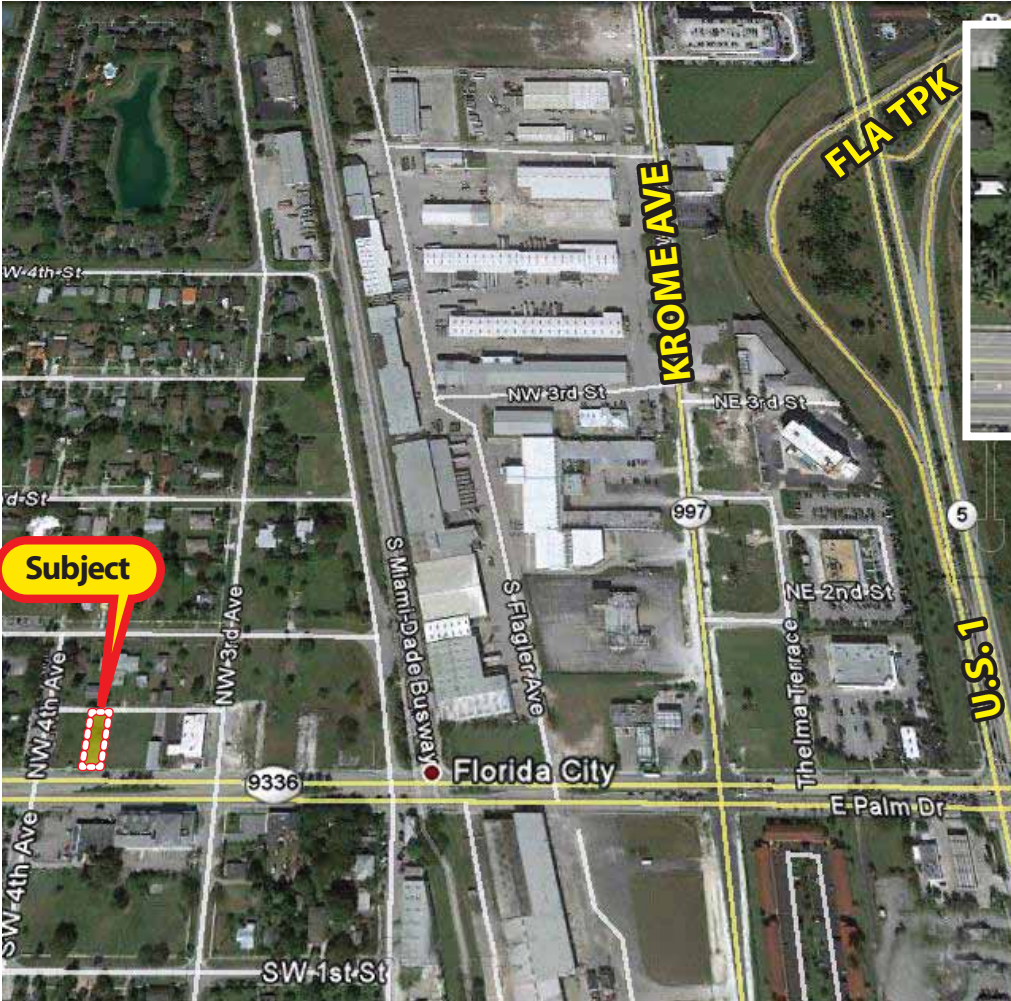


TRUSTEE LAND SALE

***** DOWNTOWN FLORIDA CITY *****

360 W. Palm Drive, Florida City, FL • Folio #16-7824-007-1980



- 25' x 145'.
All utilities nearby, frontage on Palm Drive with rear access from alley.
- Core area of the City of Florida City.
- Commercial Zoning. Adjacent properties also available.



\$39,900



Richard A. Swentek

RICHARD A. SWENTEK, P.A., A.L.C.

305.773.5363

Office 305.453.0109

rickswen@bellsouth.net

FLORIDA 1 REALTY florida1realtyinc.com

103400 Overseas Hwy. Suite 250-D, Key Largo, FL 33037

The information contained herein is deemed accurate however no warranty either expressed or implied is hereby given.