

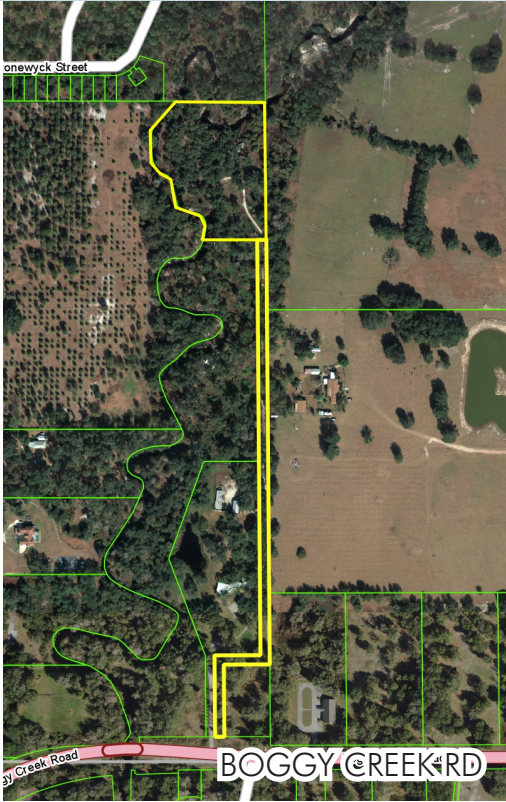
BOGGY CREEK RD

7.81 ± acres

Orange County, FL

SOLD!

LAND FOR SALE



LOCATION

Located on the north side of Simpson Rd (Boggy Creek Rd), in southeast Orange County. Immediate access to major roadways: Just 2 miles south of SR 417 (Central Florida Greenway) and 4 miles east of Florida's Turnpike.

SIZE

7.81 ± acres

ASKING PRICE

\$399,000

SOLD

ZONING

Agriculture.

ROAD FRONTAGE

Access at Boggy Creek Rd.

UTILITIES

Well and septic.

DESCRIPTION

Quiet, secluded lot with single-family residence. Access to Boggy Creek on northern end of property and adjacent to Florida Hospital land on the eastern side. Located within 10 min of booming Lake Nona/ Medical City/ Orlando Int'l Airport area.

Offering subject to errors, omission, prior sale or withdrawal without notice.

— Commercial Real Estate Investments | Management | Brokerage | Development | Land

Maury L. Carter & Associates, Inc.
407-422-3144 | www.maurycarter.com

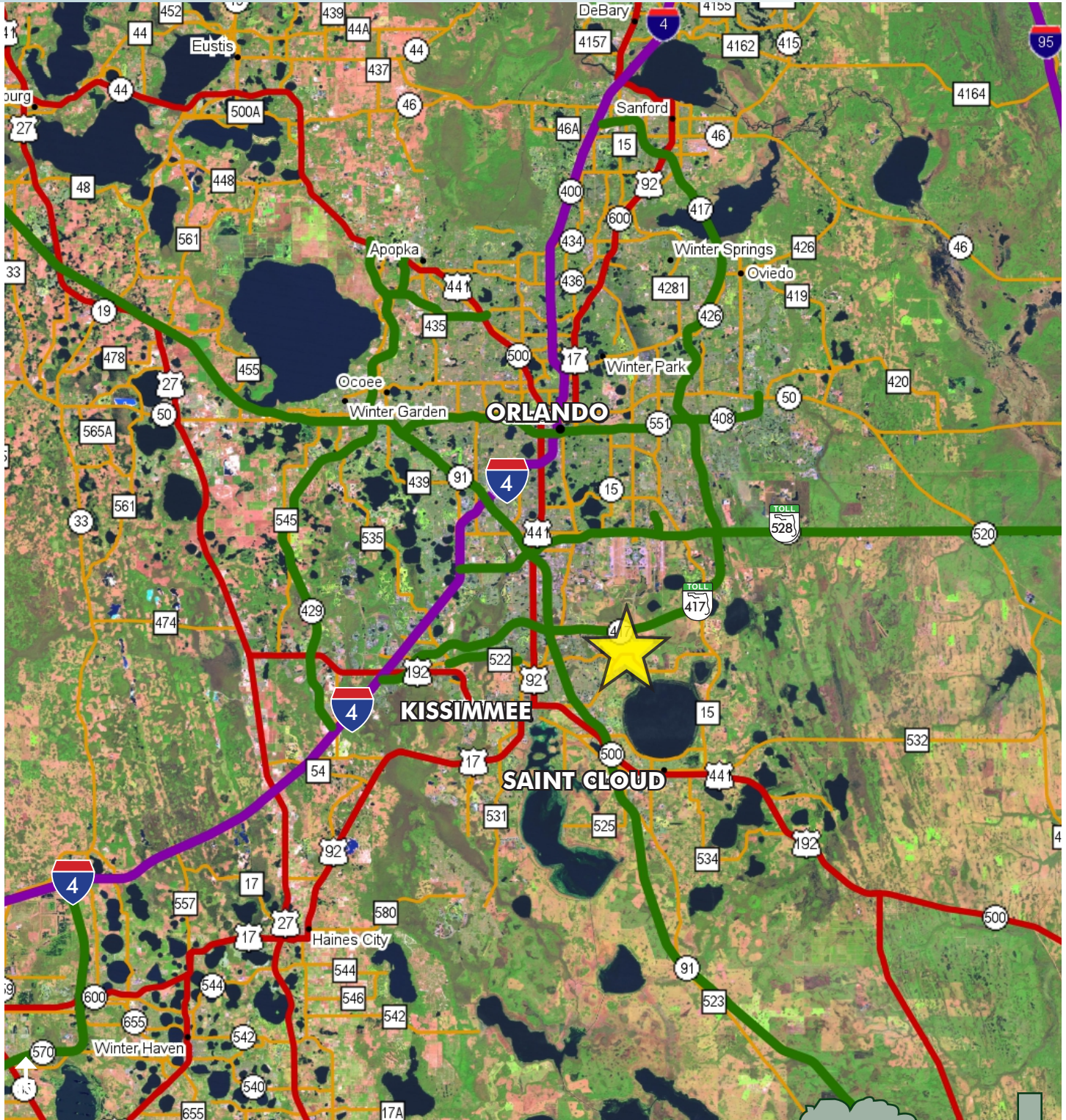


BOGGY CREEK RD

7.81 ± acres

Orange County, FL

SOLD!



LOCATION MAP

— Commercial Real Estate Investments | Management | Brokerage | Development | Land

Maury L. Carter & Associates, Inc.
407-422-3144 | www.maurycarter.com



BOGGY CREEK RD

7.81 ± acres

Orange County, FL

SOLD!



REGIONAL MAP

— Commercial Real Estate Investments | Management | Brokerage | Development | Land

Maury L. Carter & Associates, Inc.
407-422-3144 | www.maurycarter.com

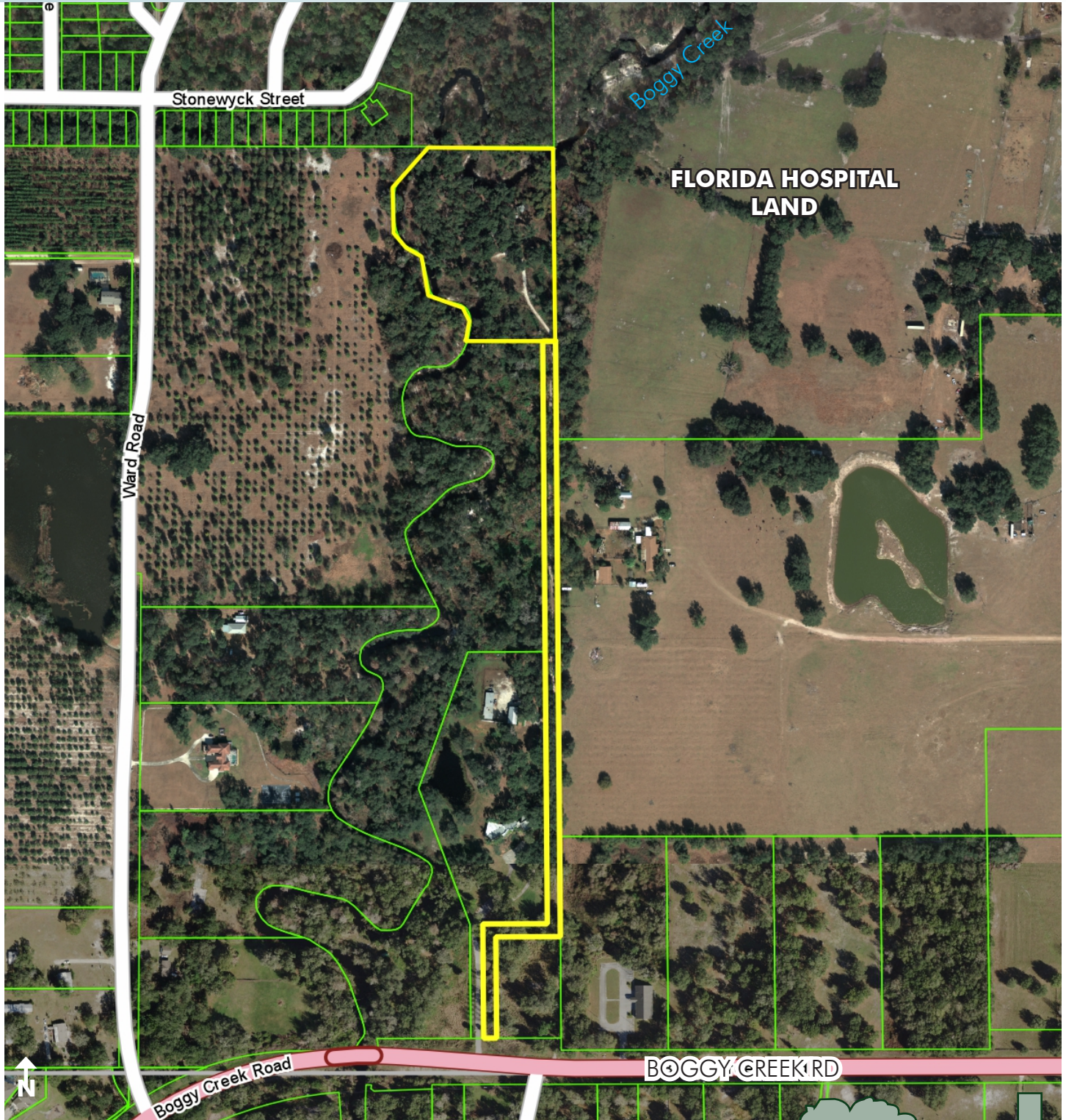


BOGGY CREEK RD

7.81 ± acres

Orange County, FL

SOLD!



PARCEL MAP

— Commercial Real Estate Investments | Management | Brokerage | Development | Land

Maury L. Carter & Associates, Inc.
407-422-3144 | www.maurycarter.com

