

FOR LAND LEASE

OR BUILD TO SUIT - COMMERCIAL PARCEL

Stuart, FL



LOCATION: Colorado Avenue, just north of US-1, in downtown Stuart, FL.

SIZE: 1.5± acres

UTILITIES: City of Stuart Water and Sewer.

ZONING: Urban Center, City of Stuart. Allows most commercial and residential uses.

COMMENTS: This prime commercial parcel is located in the hub of the downtown business district, with a heavy concentration of retail and office businesses and financial institutions in the immediate vicinity. Traffic counts of 7,200 cars per day.

TAXES: 2015 real estate taxes were \$11,558.00, based upon an assessed value of \$608,850.

PRICE: \$95,000.00 annual land lease, or will build to suit.



SLC Commercial
Realty & Development

For More Information:

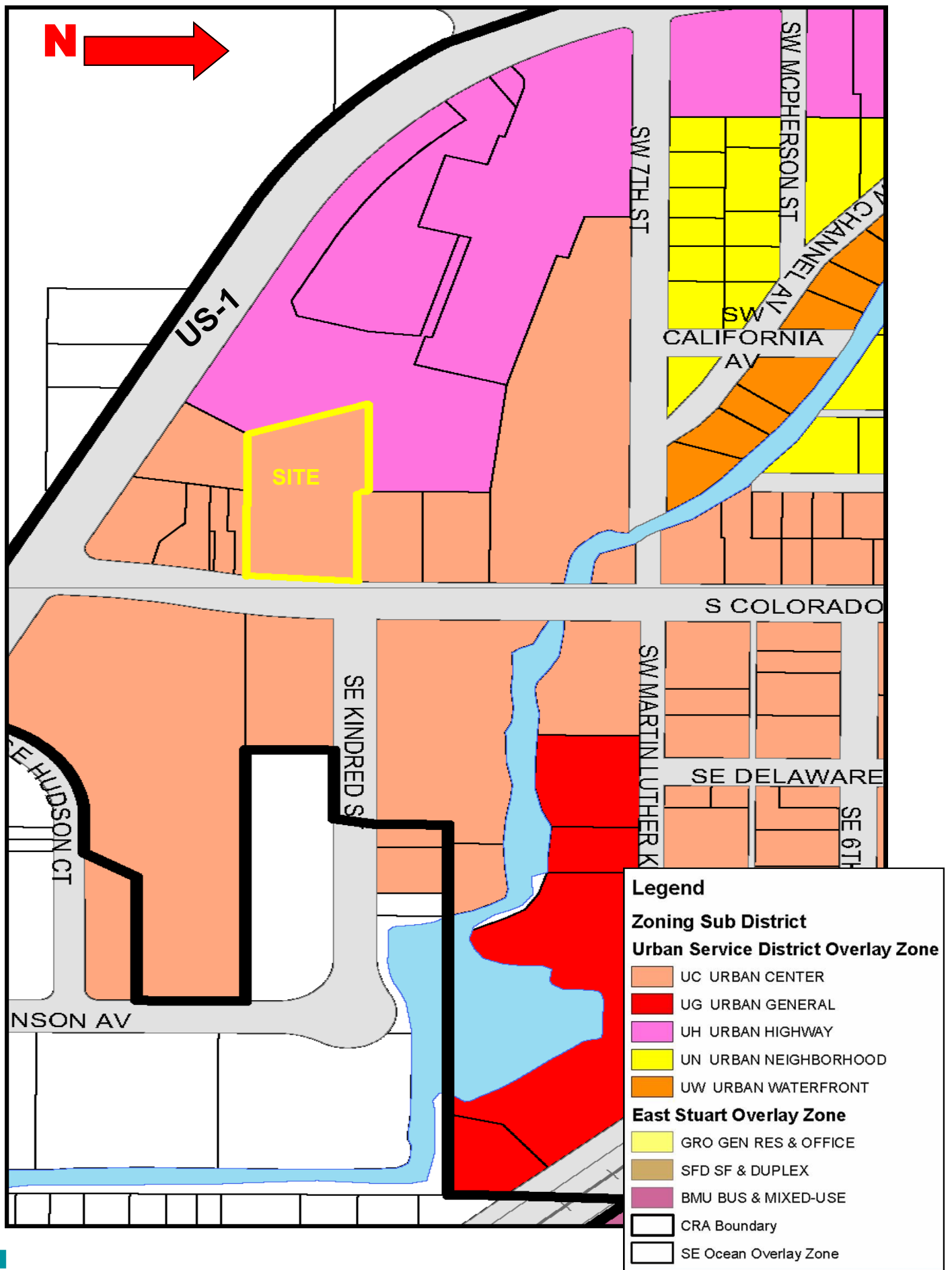
JEFFREY D. CHAMBERLIN, CCIM, SIOR
President, Broker

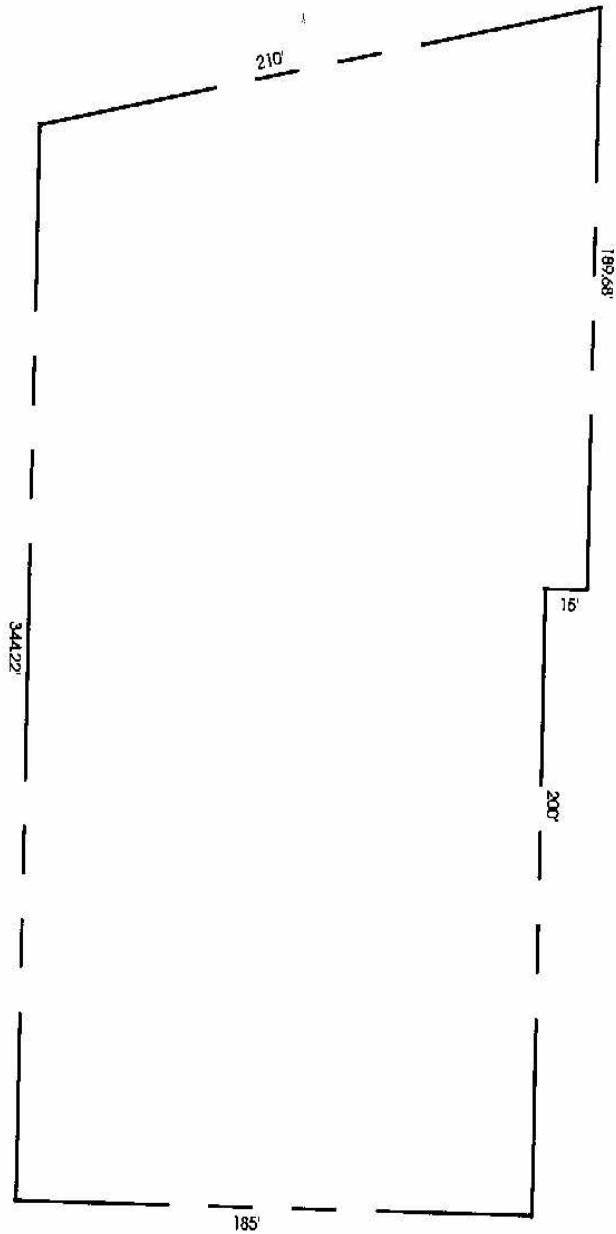
772.220.4096

chamberlin@slccommercial.com
www.slccommercial.com

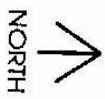


The information contained herein has been obtained from sources believed to be reliable, but no warranty or representation, expressed or implied, is made. All sizes and dimensions are approximate. Any prospective buyer should exercise prudence and verify independently all significant data and property information. This is NOT an offer of sub-agency or co-brokerage.





US HWY. 1



COLORADO AVE.

SLC COMMERCIAL
JEFF CHAMBERLIN
SCALE: 1" = 60'

Dimensions are approximate



SLC Commercial
Realty & Development

