



LIGHTLE
BECKNER
ROBISON

INCORPORATED

COMMERCIAL REAL ESTATE SERVICES



LAND FOR SALE

Northview Vacant Industrial Land

2050 Northview Dr. Palm Bay, FL 32905

FOR SALE | \$300,000

presented by:

JEFFERY T. ROBISON, CCIM

Principal | Broker
D. 321.722.0707 x 13
Jeff@TeamLBR.com

MIKE MOSS

VP Industrial Sales
D. 321.722.0707 x 12
Mike@TeamLBR.com

EXECUTIVE SUMMARY

Northview Vacant Industrial Land • 2050 Northview Dr. Palm Bay, FL 32905



OFFERING SUMMARY

Sale Price:	\$300,000
Price / Acre:	\$100,000
Lot Size:	3.0 Acres
Zoning:	LI

PROPERTY HIGHLIGHTS

- Industrial vacant land in NE Palm Bay
- Frontage on both Doreatha Fields Ave. and Northview St. NE
- 300 ft. north of Robert J Conlan Blvd.
- .6 miles to US Hwy 1
- 1.2 miles north of Palm Bay Rd.
- Located within Palm Bay Enterprise Zone

Market:	South Brevard
Submarket:	Palm Bay

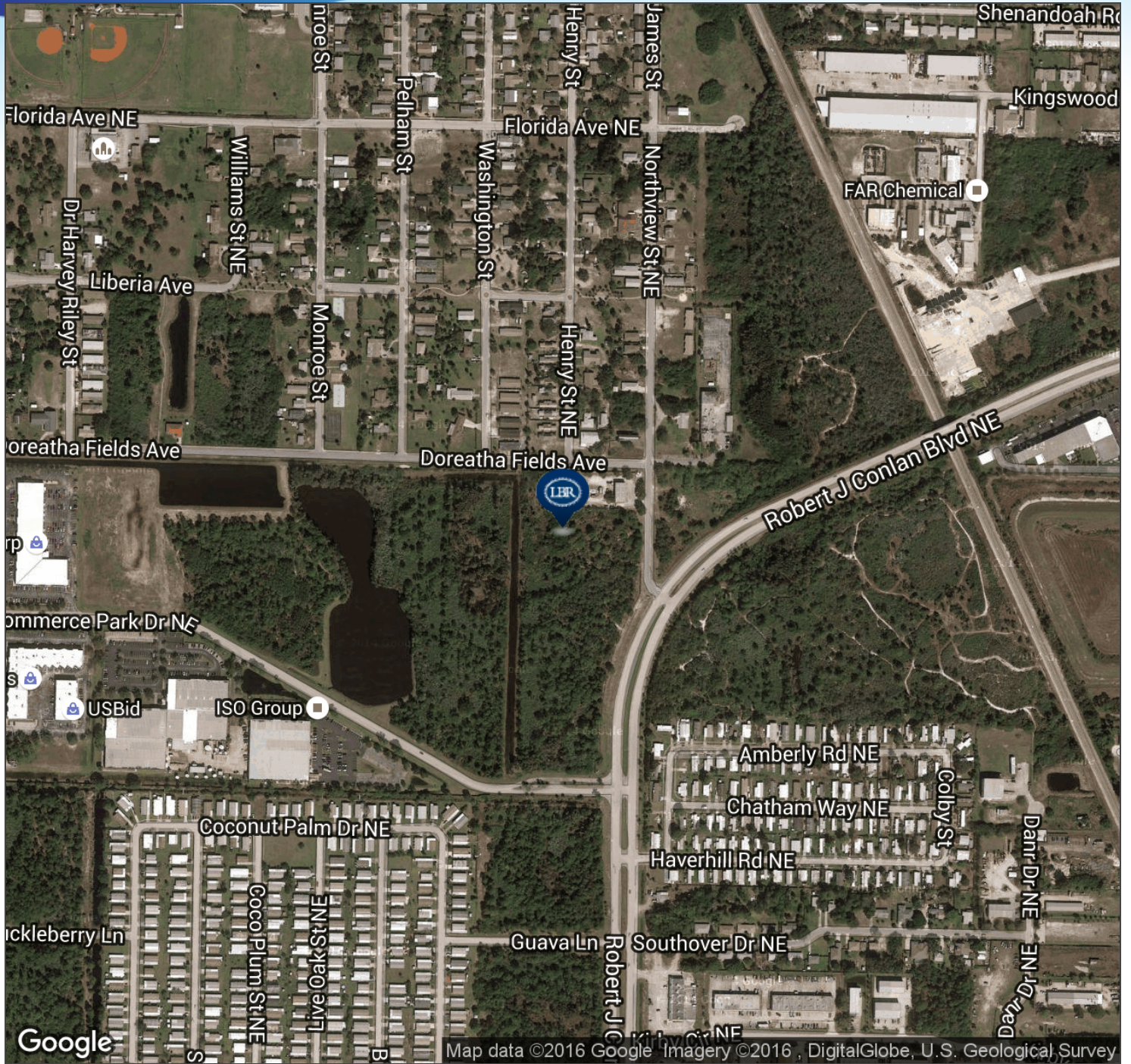
DEMOGRAPHICS

	1 Mile	5 Miles	10 Miles
Total Households:	1,978	43,444	108,271
Total Population:	4,442	103,089	266,395
Average HH Income:	\$46,372	\$60,308	\$61,754



AERIAL MAP

Northview Vacant Industrial Land • 2050 Northview Dr. Palm Bay, FL 32905



Jeffery T. Robison, CCIM
O. 321.722.0707 x 13
Jeff@TeamLBR.com

Mike Moss
O. 321.722.0707 x 12
Mike@TeamLBR.com

Lightle Beckner Robison
321.722.0707 • teamlbr.com
70 W. Hibiscus Blvd., Melbourne, FL 32901



LOCATION MAPS

Northview Vacant Industrial Land • 2050 Northview Dr. Palm Bay, FL 32905



Jeffery T. Robison, CCIM
O. 321.722.0707 x 13
Jeff@TeamLBR.com

Mike Moss
O. 321.722.0707 x 12
Mike@TeamLBR.com

Lightle Beckner Robison
321.722.0707 • teamlbr.com
70 W. Hibiscus Blvd., Melbourne, FL 32901

