

# GILGINIA TREE FARM

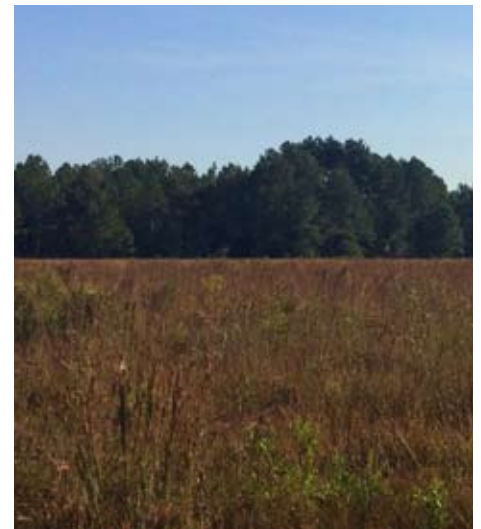
365.5± acres  
Volusia County, FL

**SOLD!**



## SECLUDED PROPERTY WITH POTENTIAL FOR FARMING, RANCHING, HUNTING & FISHING!

Farmers, ranchers, growers and outdoorsmen, take notice! Gilginia Tree Farm is a gorgeous property that can fit the needs of many users. Located in North Volusia County surrounded by farms, ranches, and natural lands.



— Commercial Real Estate Investments | Management | Brokerage | Development | Land —

Maury L. Carter & Associates, Inc.  
407-422-3144 | [www.maurycarter.com](http://www.maurycarter.com)

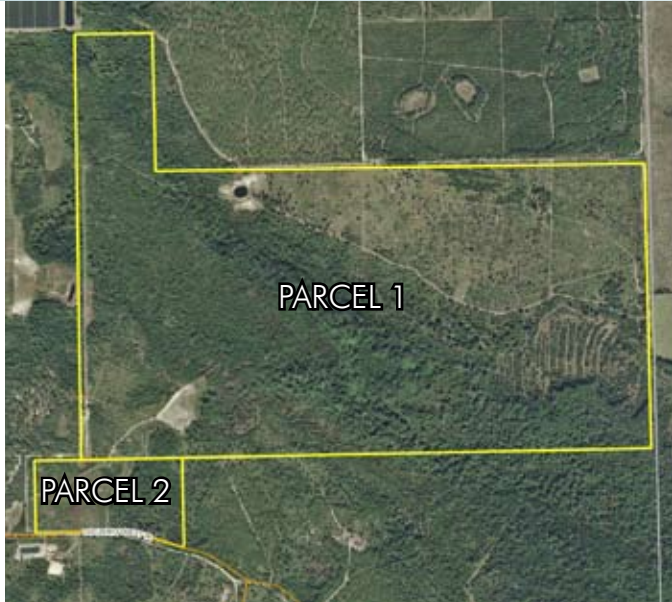


# GILGINIA TREE FARM

365.5± acres  
Volusia County, FL

**SOLD!**

LAND FOR SALE



## LOCATION

Located on Volusian Forest Trail in Pierson, FL, northern Volusia County

## SIZE

365.5± acres (per Volusia County)  
Parcel 1: 340 acres/Parcel 2: 25.5 acres

## ASKING PRICE

\$478,400 (\$1,308 per acre)  
**SOLD**

## ZONING

Parcel 1 (340 acres): A1, FR (Forestry Resource), RC (Resource Corridor)  
Parcel 2 (25.5 acres): RPUD (Residential Planned Urban Development)  
Official Acreage: 365.5 acres

## FUTURE LAND USE

Parcel 1: AR (Ag Resource), ESC (Environmental Systems Corridors)  
Parcel 2: ESC

## ROAD FRONTAGE

1,426'± on Volusian Forest Trail

## UTILITIES

Power to site. Well and septic to be installed by buyer.

## DESCRIPTION

Farmers, ranchers, outdoorsman and growers, take notice! Farming, ranching, silviculture (60± acres of mature slash pine on site) and other agricultural uses would be conducive to this land.

## DRIVE TIMES

Just under 1 HOUR:

Daytona, New Smyrna and other east coast beaches

1± HOUR:

Orlando, Sanford/Lake Mary, Sanford International Airport, Ocala

1.5 HOURS:

Jacksonville

Offering subject to errors, omission, prior sale or withdrawal without notice.

— Commercial Real Estate Investments | Management | Brokerage | Development | Land

Maury L. Carter & Associates, Inc.  
407-422-3144 | www.maurycarter.com

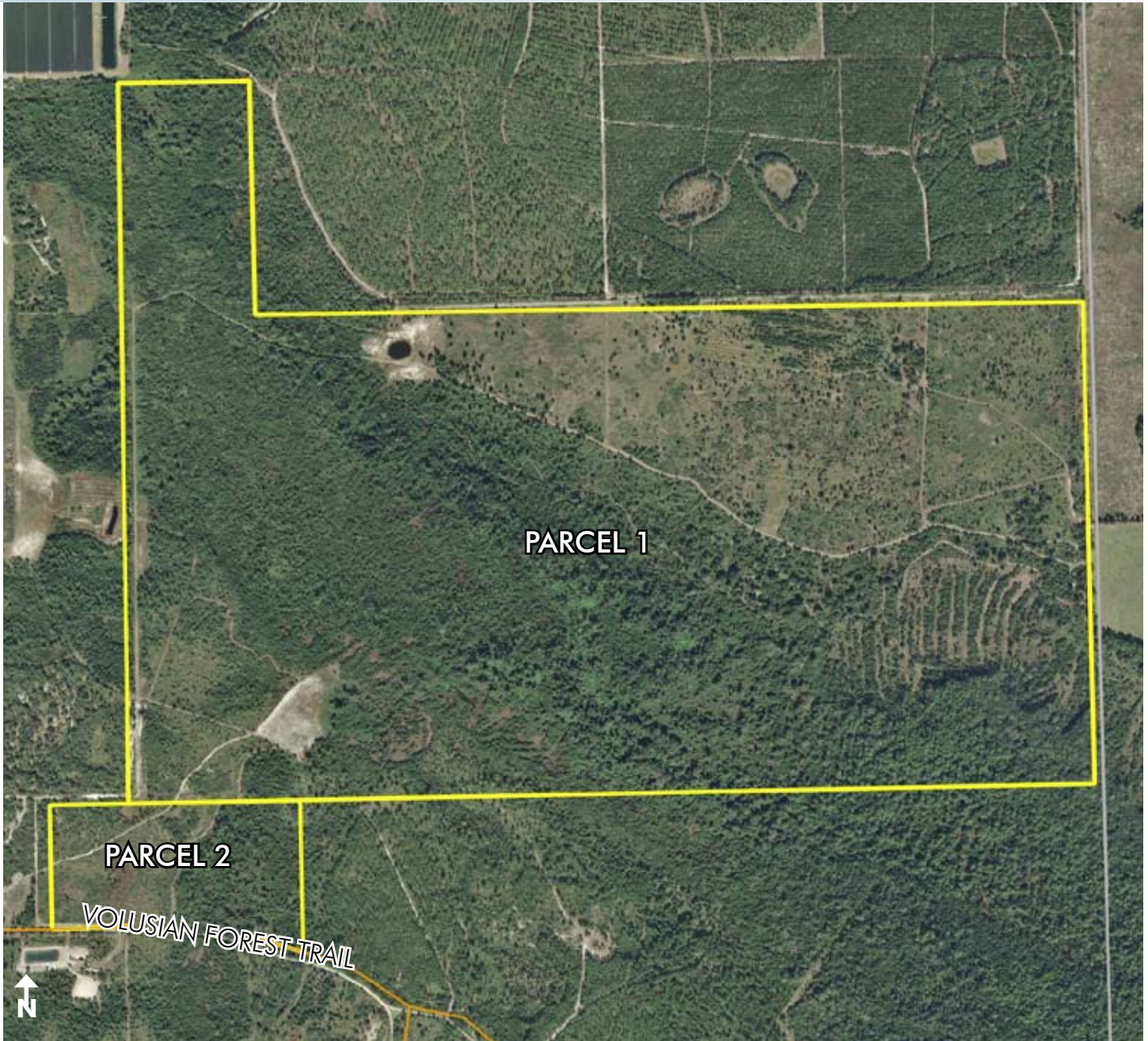




# GILGINIA TREE FARM

365.5± acres  
Volusia County, FL

**SOLD!**



PROPERTY MAP

— Commercial Real Estate Investments | Management | Brokerage | Development | Land —

Maury L. Carter & Associates, Inc.  
407-422-3144 | [www.maurycarter.com](http://www.maurycarter.com)

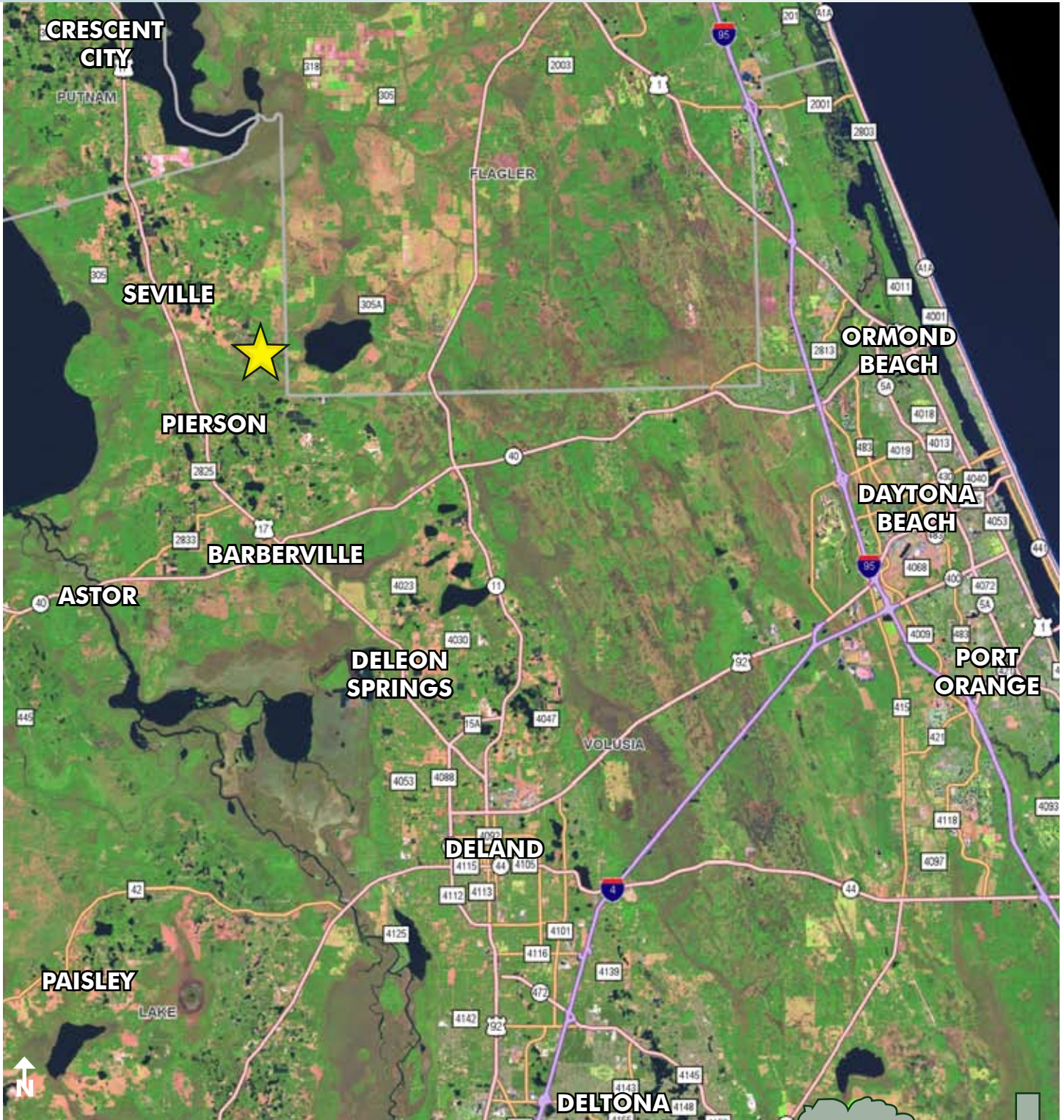




# GILGINIA TREE FARM

365.5± acres  
Volusia County, FL

**SOLD!**



REGIONAL MAP

— Commercial Real Estate Investments | Management | Brokerage | Development | Land

Maury L. Carter & Associates, Inc.  
407-422-3144 | [www.maurycarter.com](http://www.maurycarter.com)

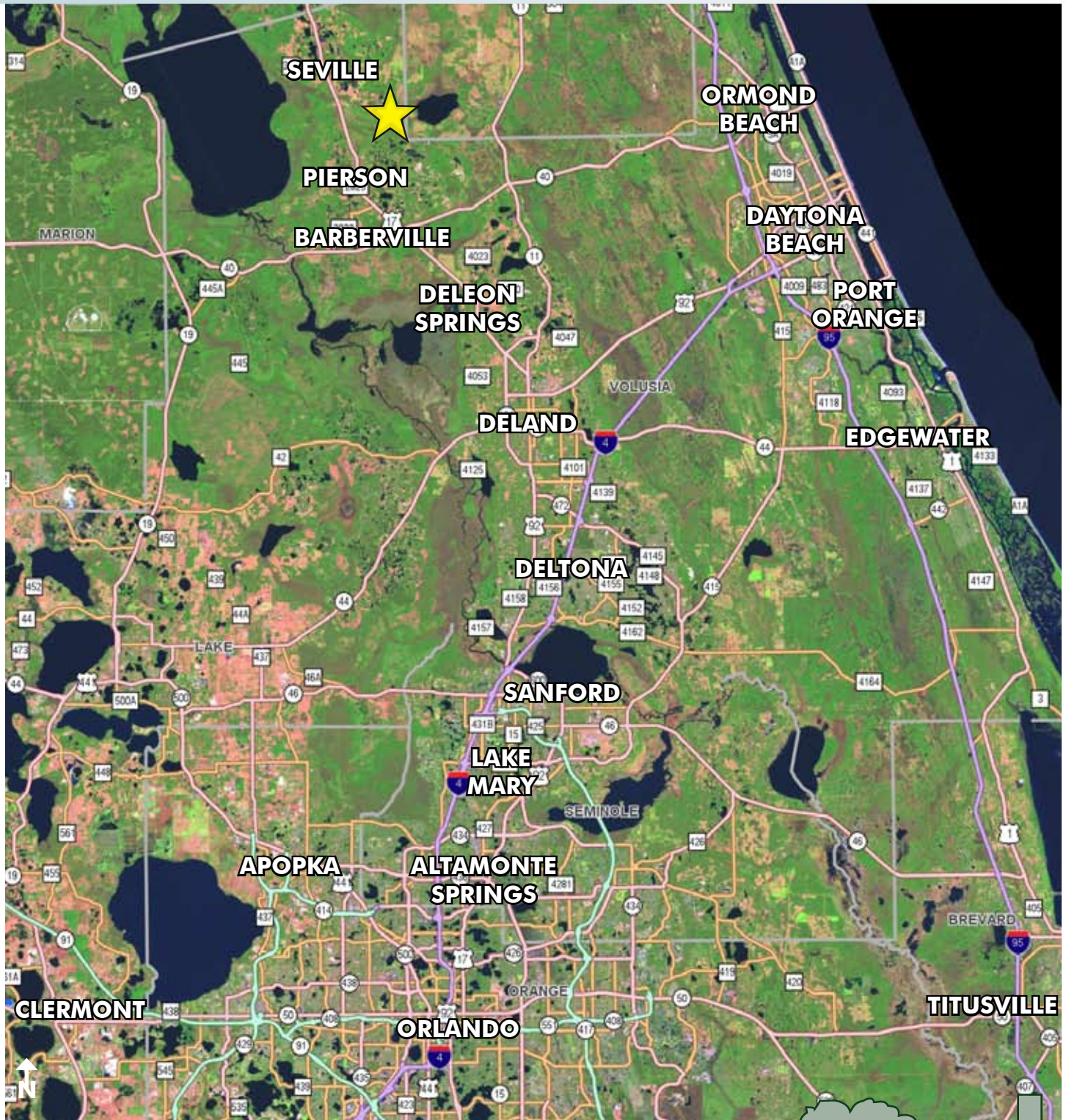




# GILGINIA TREE FARM

365.5± acres  
Volusia County, FL

**SOLD!**



LOCATION MAP

— Commercial Real Estate Investments | Management | Brokerage | Development | Land

Maury L. Carter & Associates, Inc.  
407-422-3144 | [www.maurycarter.com](http://www.maurycarter.com)

