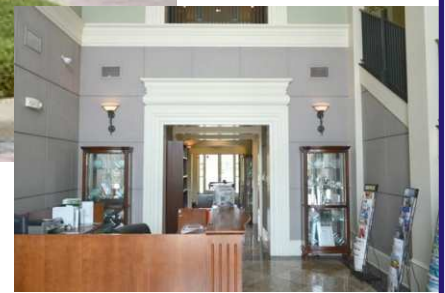


FOR SALE:

1500 PARK CENTER DRIVE
ORLANDO, FL 32835



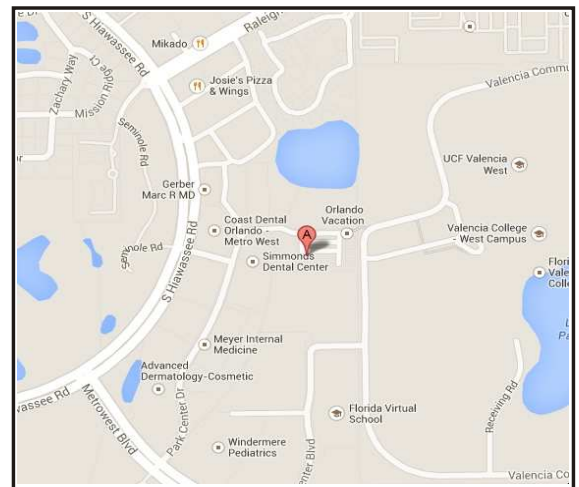
SUMMARY:

- ♦ ± 20,000 SF on ± 2.9ac
- ♦ Impeccable Corporate HQ
- ♦ Rare opportunity - first time on market
- ♦ 2 story, free-standing office building
- ♦ Lakefront
- ♦ YB 2000

FEATURES:

- ♦ Well designed layout of private offices, cubicles and work areas
- ♦ 9' 6" floor to grid height provides an excellent comfort level
- ♦ Solid core doors throughout
- ♦ Wood trim, wall sconces and brass hand railings
- ♦ 2 server rooms - one with dedicated HVAC
- ♦ 4/1000 parking ratio
- ♦ Electric roll up door for private car park

[Click to take a Virtual Tour](#)



CITY COMMERCIAL

For further information, contact
Lee Zerivitz, CCIM

Office: 407.644.CITY (2489)

Cell: 407.929.3598

lee@citycommercial.com

www.CITYcommercial.com

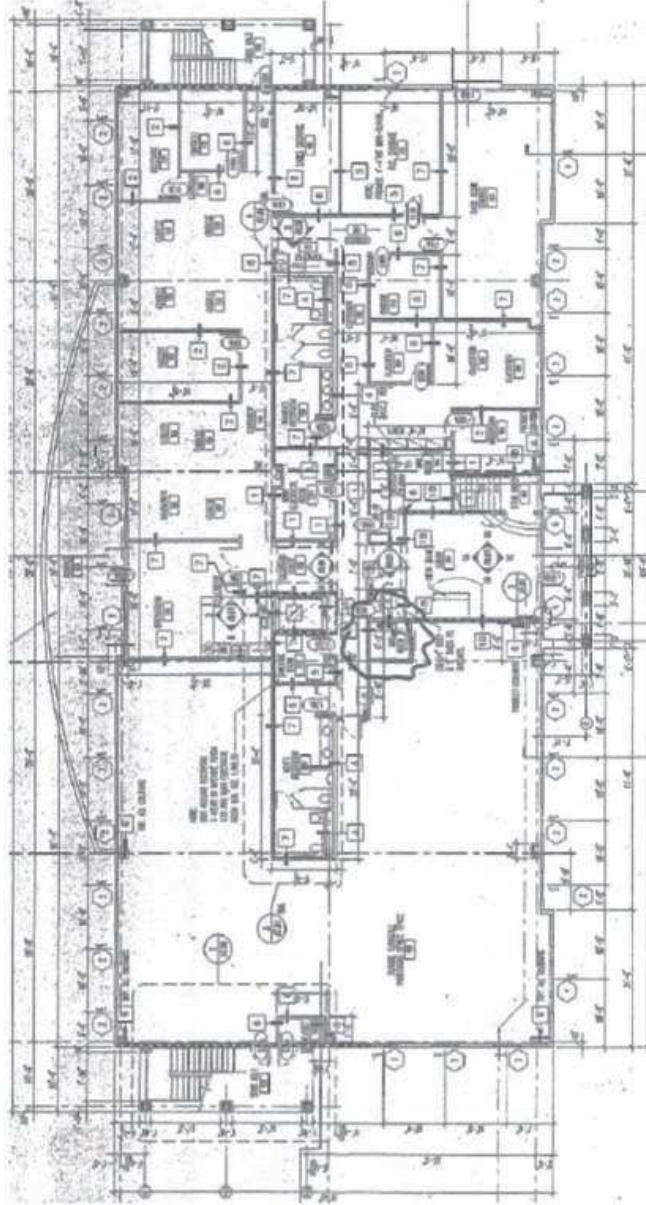
213 West Comstock Avenue ♦ Winter Park, FL 32789

CITY Commercial is the agent of the Landlord or Seller of this property and will be paid by the Landlord or Seller. All information furnished with respect to the subject property has been obtained from sources deemed reliable. No representation as to accuracy thereof is made. This offering is subject to errors, omissions, prior sales or withdrawal without notice.

FOR SALE:

1500 PARK CENTER DRIVE
ORLANDO, FL 32835

Floor Plan -1st Floor



CITY COMMERCIAL

For further information, contact

Lee Zerivitz, CCIM

Office: 407.644.CITY (2489)

Cell: 407.929.3598

lee@citycommercial.com

www.CITYcommercial.com

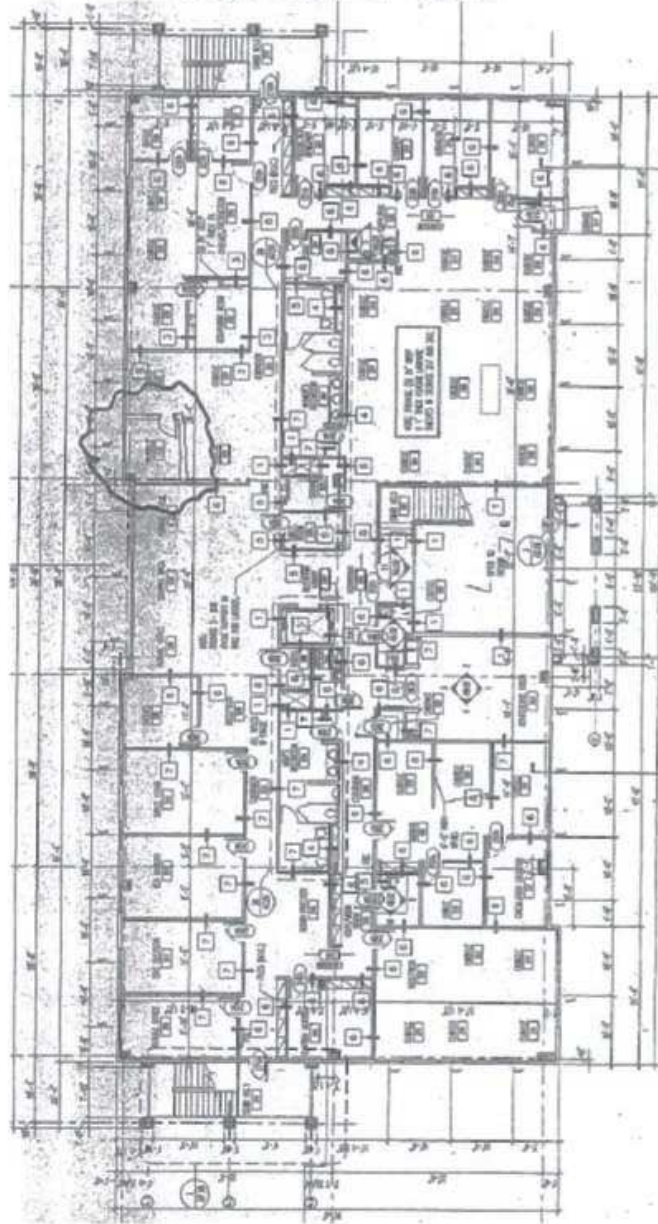
213 West Comstock Avenue ♦ Winter Park, FL 32789

CITY Commercial is the agent of the Landlord or Seller of this property and will be paid by the Landlord or Seller. All information furnished with respect to the subject property has been obtained from sources deemed reliable. No representation as to accuracy thereof is made. This offering is subject to errors, omissions, prior sales or withdrawal without notice.

FOR SALE:

1500 PARK CENTER DRIVE
ORLANDO, FL 32835

Floor Plan -2nd Floor



CITY COMMERCIAL

For further information, contact

Lee Zerivitz, CCIM

Office: 407.644.CITY (2489)

Cell: 407.929.3598

lee@citycommercial.com

www.CITYcommercial.com

213 West Comstock Avenue ♦ Winter Park, FL 32789

CITY Commercial is the agent of the Landlord or Seller of this property and will be paid by the Landlord or Seller. All information furnished with respect to the subject property has been obtained from sources deemed reliable. No representation as to accuracy thereof is made. This offering is subject to errors, omissions, prior sales or withdrawal without notice.

FOR SALE:

1500 PARK CENTER DRIVE
ORLANDO, FL 32835

Aerial Map
(subject outlined in red)



CITY COMMERCIAL

For further information, contact

Lee Zerivitz, CCIM

Office: 407.644.CITY (2489)

Cell: 407.929.3598

lee@citycommercial.com

www.CITYcommercial.com

213 West Comstock Avenue ♦ Winter Park, FL 32789

CITY Commercial is the agent of the Landlord or Seller of this property and will be paid by the Landlord or Seller. All information furnished with respect to the subject property has been obtained from sources deemed reliable. No representation as to accuracy thereof is made. This offering is subject to errors, omissions, prior sales or withdrawal without notice.