

SANFORD INDUSTRIAL BUILDING



PROPERTY DETAILS

- 12,976± square foot, one-story, industrial building situated on 1.05± acres including 400± sf of office
- Built in 1997
- Zoned M-1, Seminole County
- 3-phase electrical power
- 18' ceilings
- One (1) dock high door, Three (3) grade level doors
- 2014 Taxes: \$8,872.30
- Convenient access to CR 419, US Hwy 17-92 and Ronald Reagan Blvd.

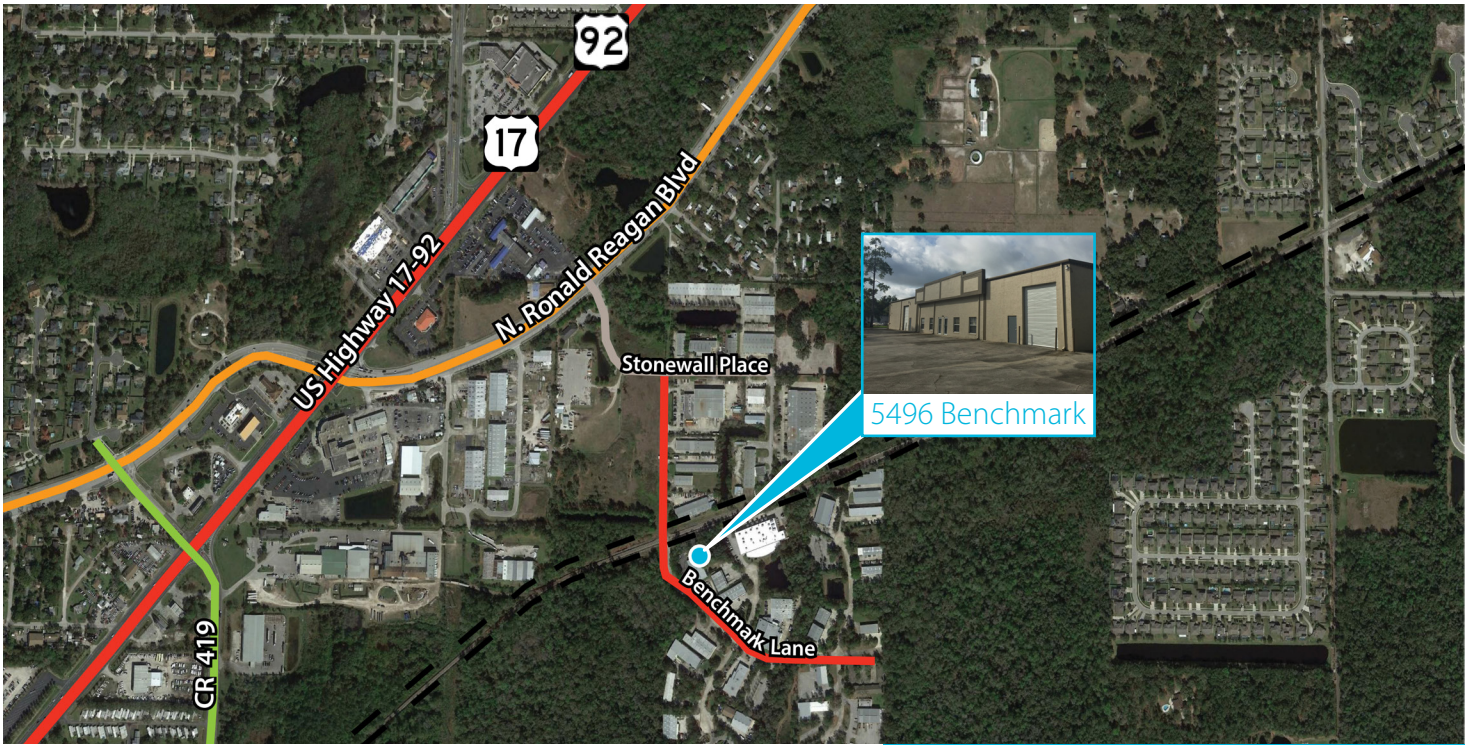
For more information, contact:

407.440.6658

Nathan Eissler
nathan.eissler@avisonyoung.com

407.440.6646

Lawson Dann
lawson.dann@avisonyoung.com



GRADE LEVEL DOCK



FOR SALE: \$679,000.00 (\$52.32/SF)

CALL FOR LEASE DETAILS

Nathan Eissler

D 407.440.6658

C 407.342.7494

nathan.eissler@avisonyoung.com

Lawson Dann

D 407.440.6646

C 407.342.4698

lawson.dann@avisonyoung.com

Avison Young

135 W. Central Boulevard

Suite 700

Orlando, FL 32801, USA

Phone: 407.219.3500 Fax: 407.219.3501



avisonyoung.com

THE INFORMATION CONTAINED HEREIN WAS OBTAINED FROM SOURCES BELIEVED RELIABLE; HOWEVER, AVISON YOUNG MAKES NO GUARANTEES, WARRANTIES OR REPRESENTATIONS AS TO THE COMPLETENESS OR ACCURACY THEREOF. THE PRESENTATION OF THIS PROPERTY IS SUBMITTED SUBJECT TO ERRORS, OMISSIONS, CHANGE OF PRICE, OR CONDITIONS, PRIOR TO SALE OR LEASE, OR WITHDRAWAL WITHOUT NOTICE.