



# St Joe's Hospital Professional Office Space

**1931 W. Dr Martin Luther King Jr. Blvd  
Tampa, FL 33607**

**Sale Price: \$1,195,000**

**Lease rate: \$12 /sf Gross**

**Building Size: 9300 sf**

**Available Space for Lease: 1,443 sf**

**Lot Size: .58 acre**

**Parking: 3.5 / 1000**

**Availability: Immediate**

**Suite C (1443 sf) \$1443 / mo + sales tax**

**Suite D (1308 sf) \$1308 / mo + sales tax**

**Suite E (1308 sf) \$1308 / mo + sales tax**

**Michael Braccia, P.A.**  
Commercial Property Specialist



Offered by:

Michael Braccia, P.A.  
Builder's Services, Inc  
Direct: 813.625.2375  
mike.braccia@gmail.com  
www.mblistings.com

**Professional Office suites available for lease in this 9300 square foot, single story office building in the busy St Joseph's Hospital Professional District. Spaces are currently built out as law offices, Chiropractic offices, and general office space with tenant improvement and build out dollars available for qualified tenants. Located just east of Howard Ave on Dr Martin Luther King Jr. Blvd, this location offers easy access to St Joseph's Hospital, I-275, Downtown Tampa and Tampa General Hospital, and is centrally located within a short distance to the densely populated South Tampa and West Tampa markets.**

Michael Braccia, P.A.  
Commercial Property Specialist



---

# Exterior Photos

---

1931 W. Dr Martin Luther King Jr. Blvd  
Tampa, FL 33607



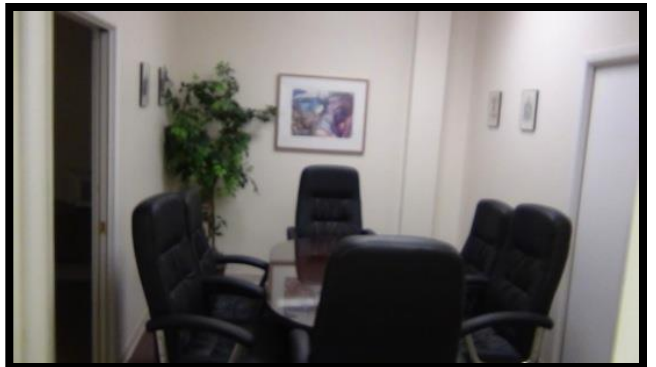
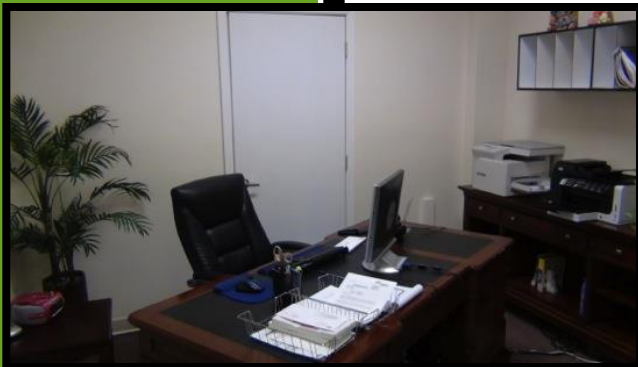
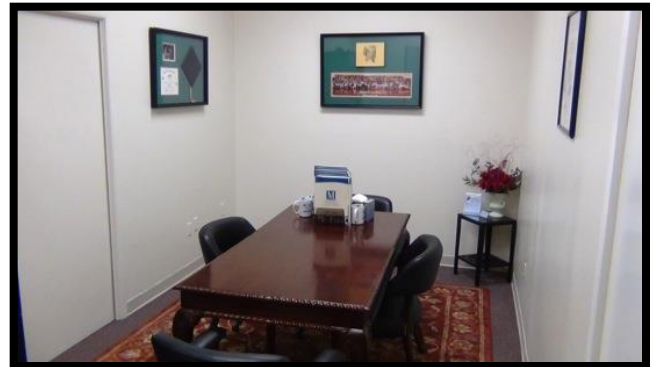
Michael Braccia, P.A.  
Builder's Services, Inc.  
813-625-2375  
mike.braccia@gmail.com  
www.mblastings.com

Michael Braccia, P.A.  
Commercial Property Specialist



# Interior Photos

1931 W. Dr Martin Luther King Jr. Blvd  
Tampa, FL 33607

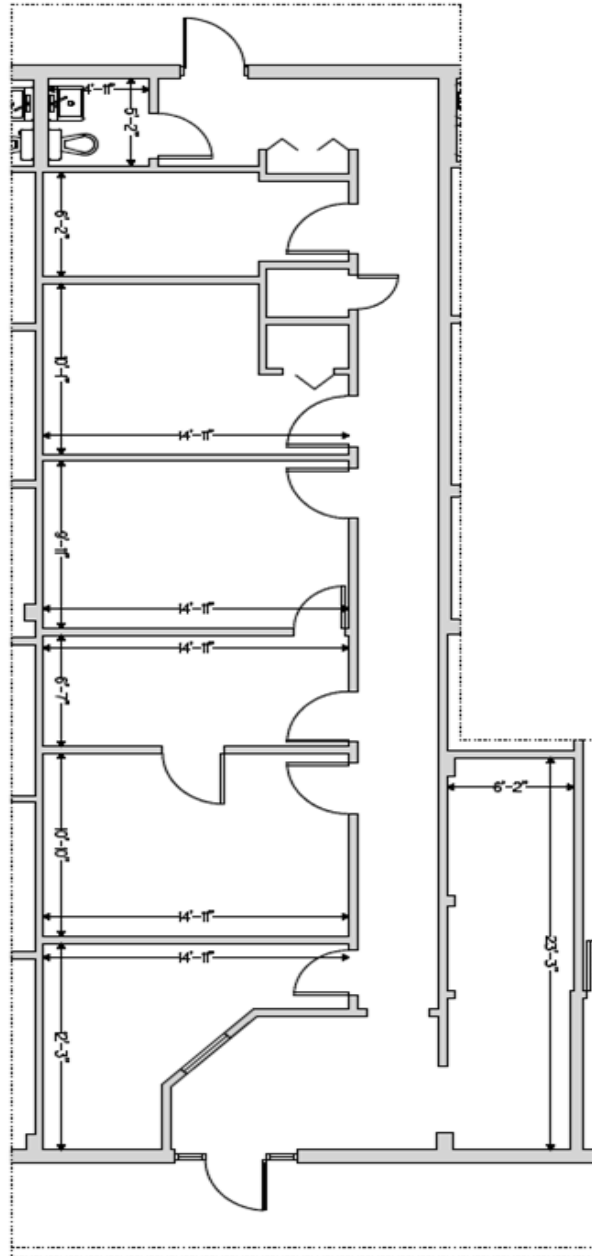


Michael Braccia, P.A.  
Builder's Services, Inc.  
813-625-2375  
mike.braccia@gmail.com  
www.mblistings.com



# Space Plan Suite C 1443 sf

1931 W. Dr Martin Luther King Jr. Blvd  
Tampa, FL 33607



Michael Braccia, P.A.  
Commercial Property Specialist



Offered by:

Michael Braccia, P.A.

Builder's Services, Inc

Direct: 813.625.2375

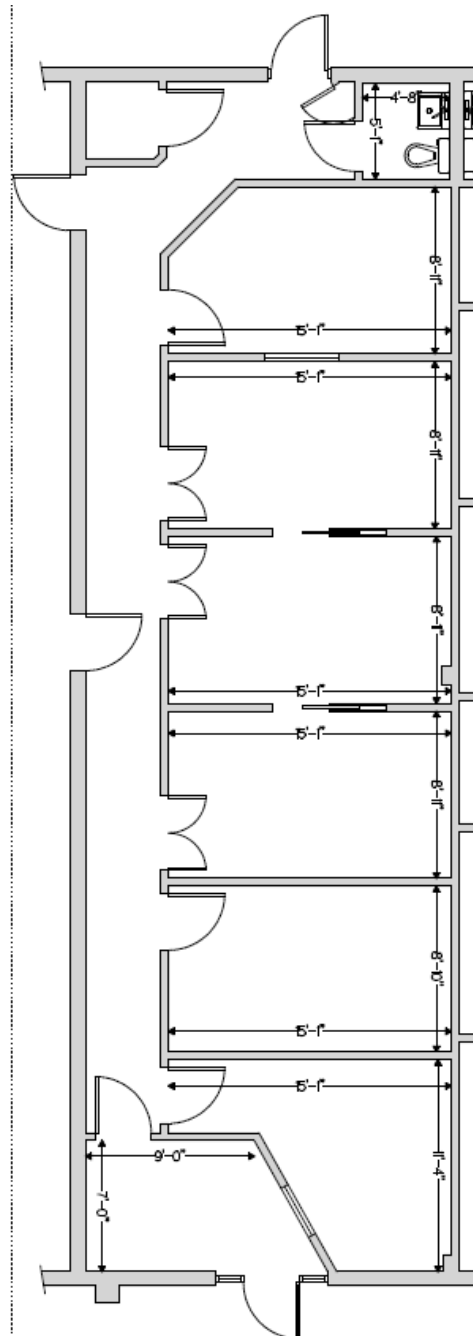
mike.braccia@gmail.com

www.mblistings.com



# Space Plan Suite D 1308 sf

1931 W. Dr Martin Luther King Jr. Blvd  
Tampa, FL 33607



Michael Braccia, P.A.  
Commercial Property Specialist



Offered by:

Michael Braccia, P.A.

Builder's Services, Inc

Direct: 813.625.2375

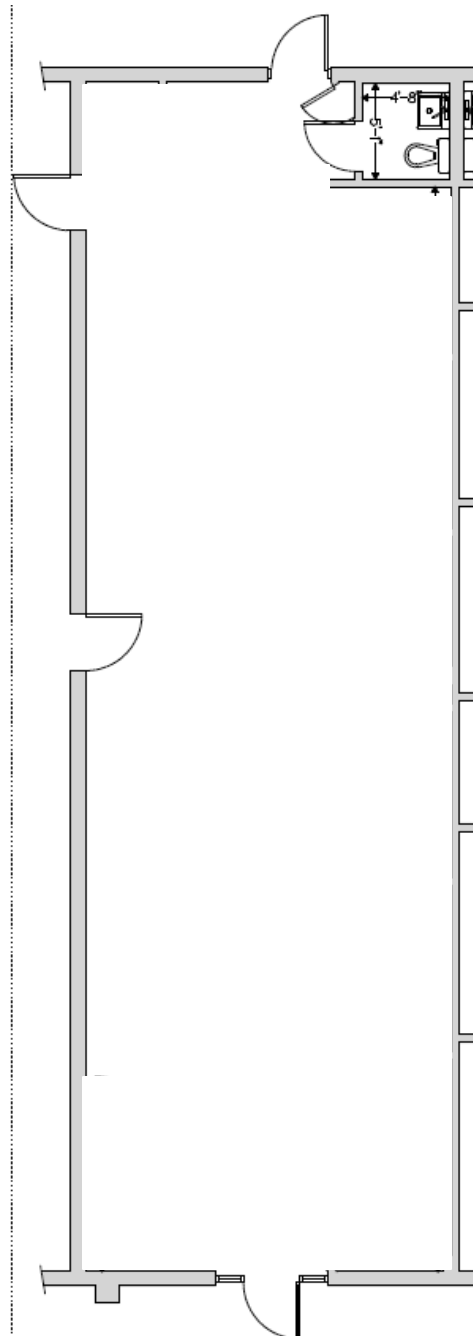
mike.braccia@gmail.com

www.mblistings.com



# Space Plan Suite E 1308 sf

1931 W. Dr Martin Luther King Jr. Blvd  
Tampa, FL 33607



Michael Braccia, P.A.  
Commercial Property Specialist



Offered by:

Michael Braccia, P.A.

Builder's Services, Inc

Direct: 813.625.2375

mike.braccia@gmail.com

www.mblistings.com



# Aerial View

1931 W. Dr Martin Luther King Jr. Blvd  
Tampa, FL 33607



Michael Braccia, P.A.  
Commercial Property Specialist



Offered by:

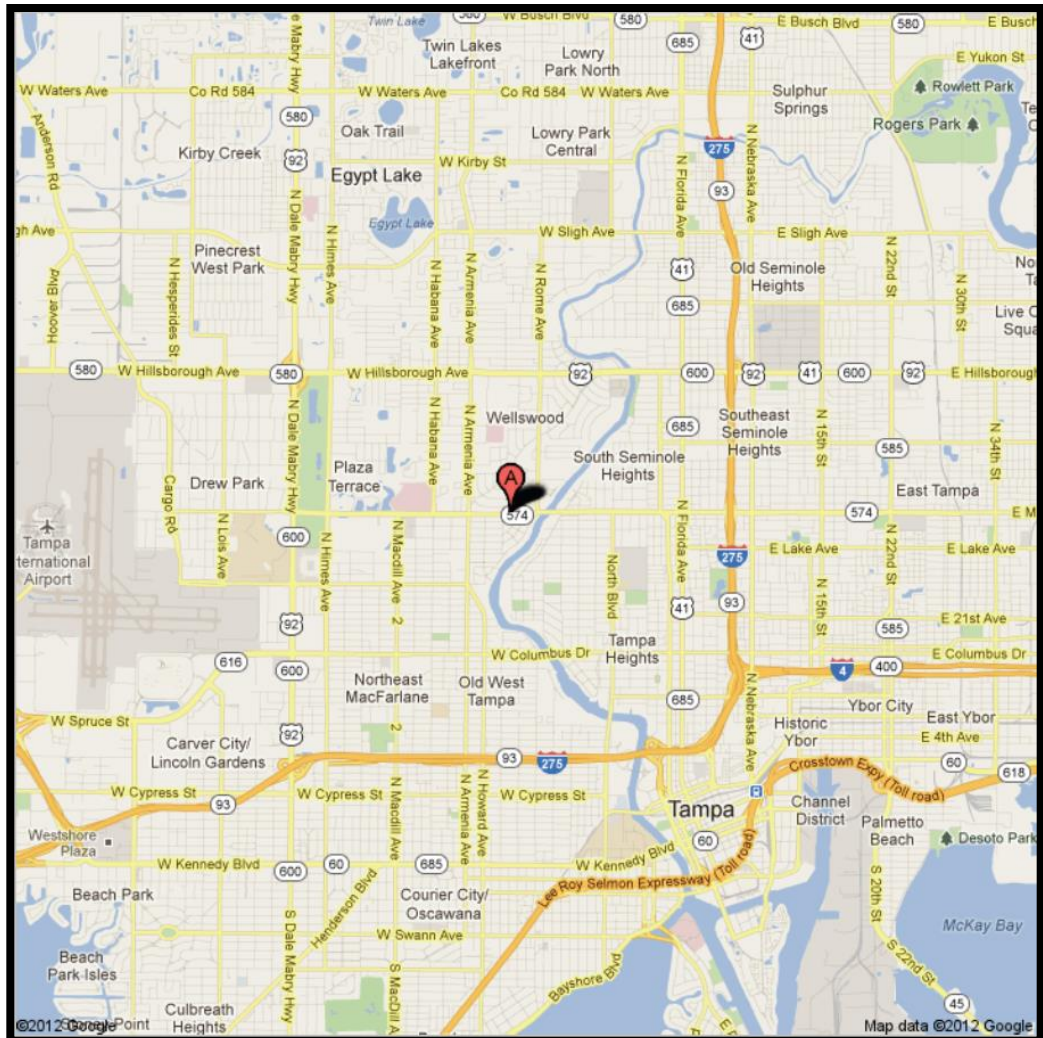
Michael Braccia, P.A.

Builder's Services, Inc  
Direct: 813.625.2375  
mike.braccia@gmail.com  
www.mblastings.com



# Location

**1931 W. Dr Martin Luther King Jr. Blvd  
Tampa, FL 33607**



**Michael Braccia, P.A.**  
Commercial Property Specialist



Offered by:

Michael Braccia, P.A.

Builder's Services, Inc  
Direct: 813.625.2375  
mike.braccia@gmail.com  
www.mblistings.com