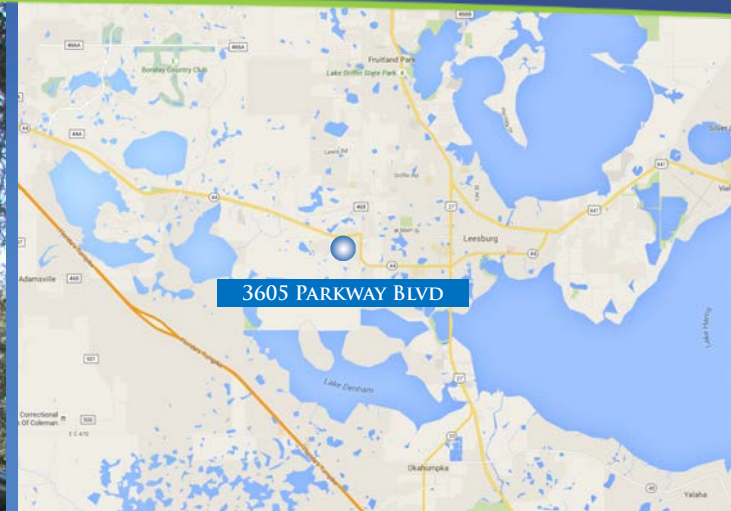


FOR SALE

COMMITMENT. INTEGRITY. TEAM. EXCELLENCE.

3605 PARKWAY BOULEVARD
LEESBURG, FL

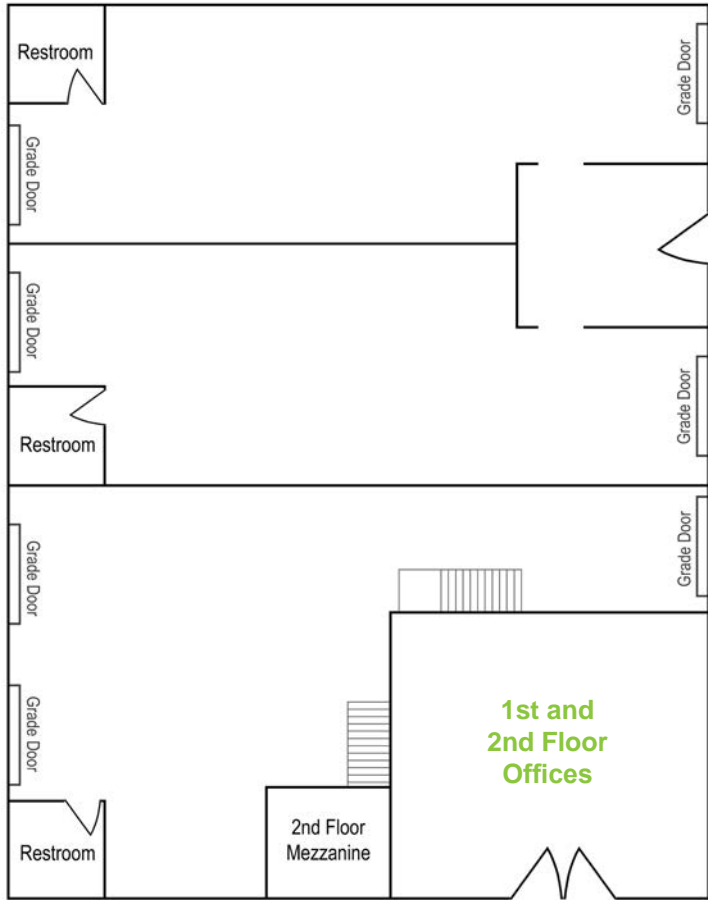


BILLY GIOVANETTI
Associate
billy.giovanetti@citepartners.com
407.930.1807

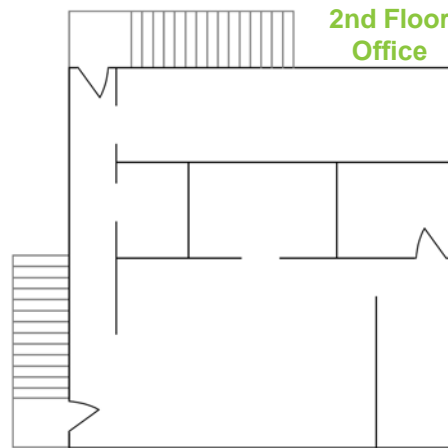
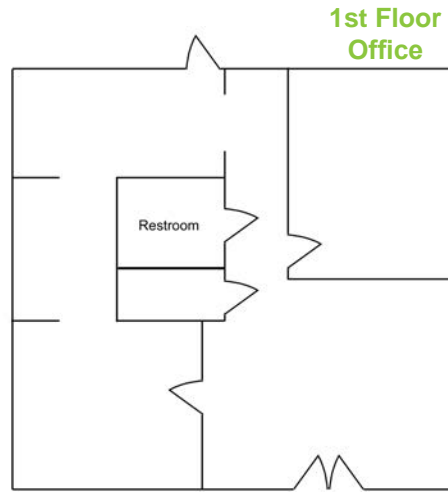
BOBBY ISOLA, CCIM
Director, Principal
bobby.isola@citepartners.com
407.930.1804

MATT SULLIVAN, SIOR, CCIM
Managing Director, Principal
matt.sullivan@citepartners.com
407.930.1802





FLOOR PLANS



3605 PARKWAY BLVD

THE BUILDING

- 7,000 SF
- 1,050 SF of office
- 7 grade doors
- 18' clear height
- Side load
- Clear span
- Built in 1996

THE PROPERTY

- 0.99 acres
- 20 parking spaces
- Zoned PUD, Lake County

THE PRICE

- \$435,000 (\$62.14/SF)

BILLY GIOVANETTI
Associate
billy.giovanetti@citepartners.com
407.930.1807

BOBBY ISOLA, CCIM
Director, Principal
bobby.isola@citepartners.com
407.930.1804

MATT SULLIVAN, SIOR, CCIM
Managing Director, Principal
matt.sullivan@citepartners.com
407.930.1802

CITE PARTNERS
100 South Orange Ave., Suite 500
Orlando, FL 32801
www.citepartners.com

DISCLAIMER:
This document has been prepared by Cite Partners for advertising and general information only. Cite Partners makes no guarantees, representations or warranties of any kind, expressed or implied, regarding the information including, but not limited to, warranties of content, accuracy and reliability. Any interested party should undertake their own inquiries as to the accuracy of the information. Cite Partners excludes unequivocally all inferred or implied terms, conditions and warranties arising out of this document and excludes all liability for loss and damages arising therefrom. This publication is the copyrighted property of Cite Partners and/or its licensor(s). All rights reserved.