

SALE

FLEX/RETAIL CONDO

4808 NW 167th St.
Miami Gardens, FL 33014



SALE OVERVIEW

SALE PRICE: \$195,000
AVAILABLE: 2,598 sf
BUILDING SIZE: 60,000± sf
SIGNAGE: Building Façade
YEAR BUILT: 1976
ZONING: Light Industrial
FLU: Commerce - Mixed-use, primarily commercial/industrial areas with medium to high density residential

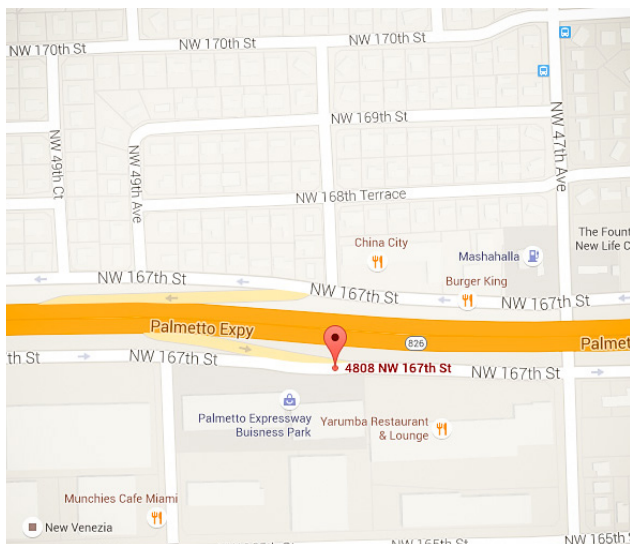
PROPERTY DESCRIPTION

Palmetto Expressway Business Park is an industrial flex property with a retail & showroom storefront. This condo unit has solid concrete walls and polished concrete floor.

- Great for Showroom/Warehouse/Distribution Center
- 100% air-conditioning
- 12' Roll-up OHD in rear of space
- 16' ceiling
- Abundant parking

LOCATION

High visibility location directly on the Palmetto Expressway. Great exposure and access! Palmetto Expressway (SR 826) to NW 47th Ave. to NW 165th St (west) to NW 49th Ave (north) to NW 167th St.




www.TeamLBR.com

© Lightle Beckner Robison, Inc.
All Rights Reserved

 **LIGHTLE
BECKNER
ROBISON**

Brian L. Lightle, CCIM, SIOR | President | Broker
(321) 722-0707 x14 Brian@TeamLBR.com

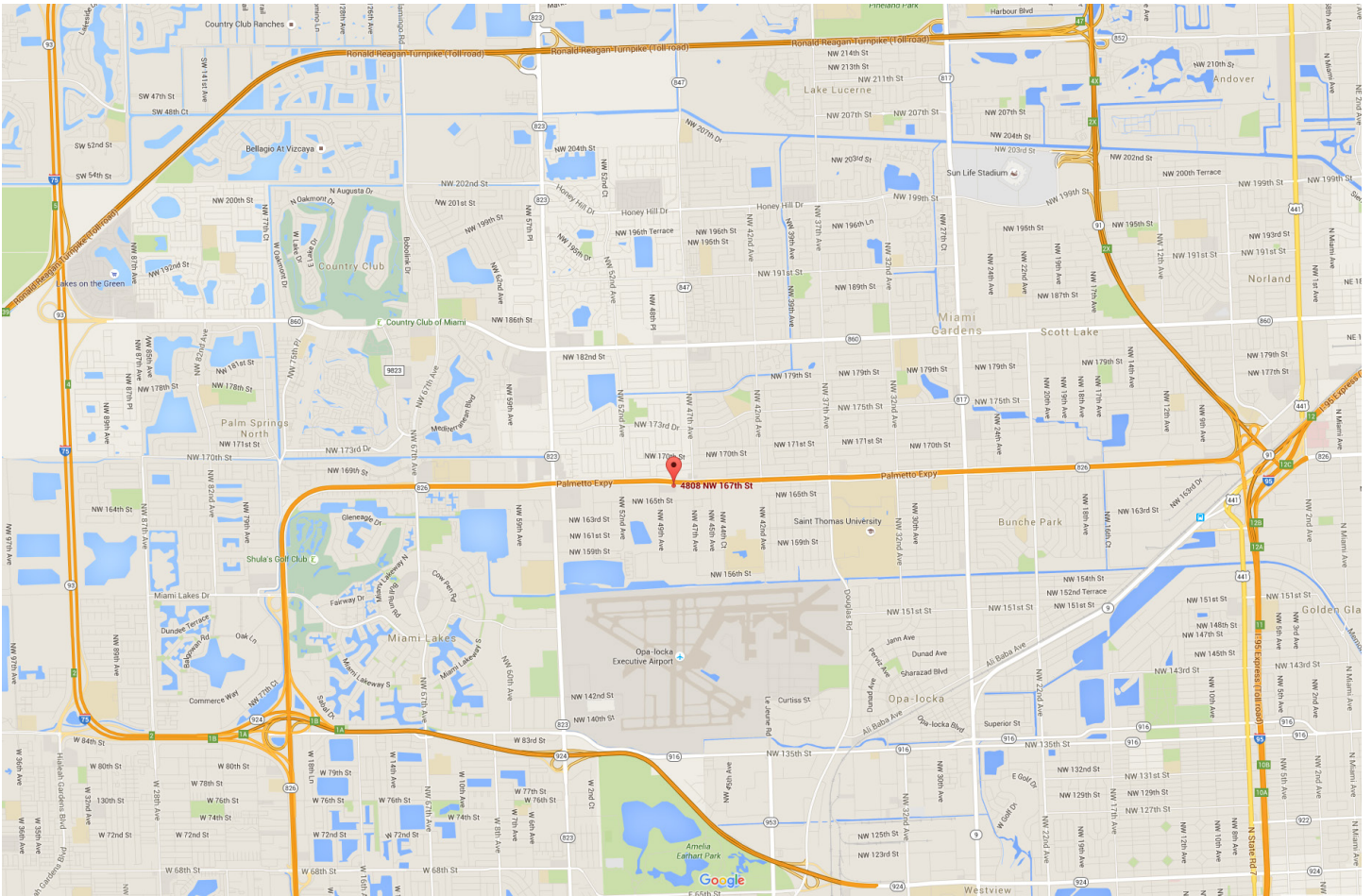
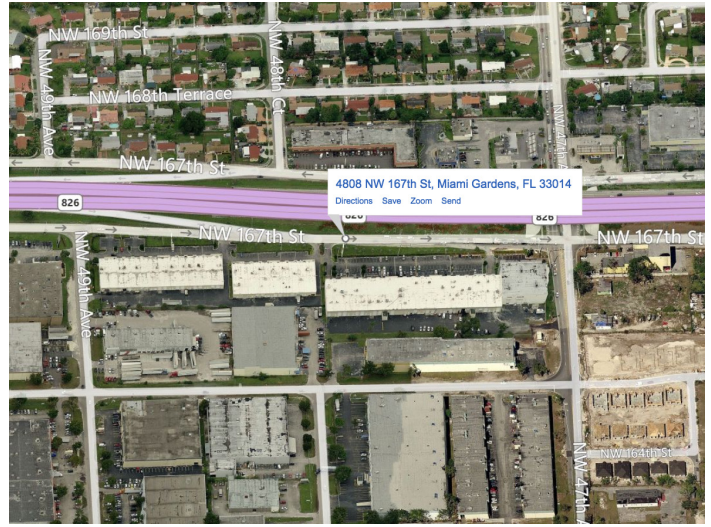
70 W. Hibiscus Blvd. · Melbourne, Florida 32901 · (321) 722-0581 fax

Information contained herein has been obtained from others and considered to be reliable; However, a purchaser or lessee is expected to verify all information to his/her own satisfaction.

SALE

FLEX/RETAIL CONDO

4808 NW 167th St.
Miami Gardens, FL 33014



www.TeamLBR.com



**LIGHTLE
BECKNER
ROBISON**

Brian L. Lightle, CCIM, SIOR | President | Broker
(321) 722-0707 x14 | Brian@TeamLBR.com

70 W. Hibiscus Blvd. · Melbourne, Florida 32901 · (321) 722-0581 fax

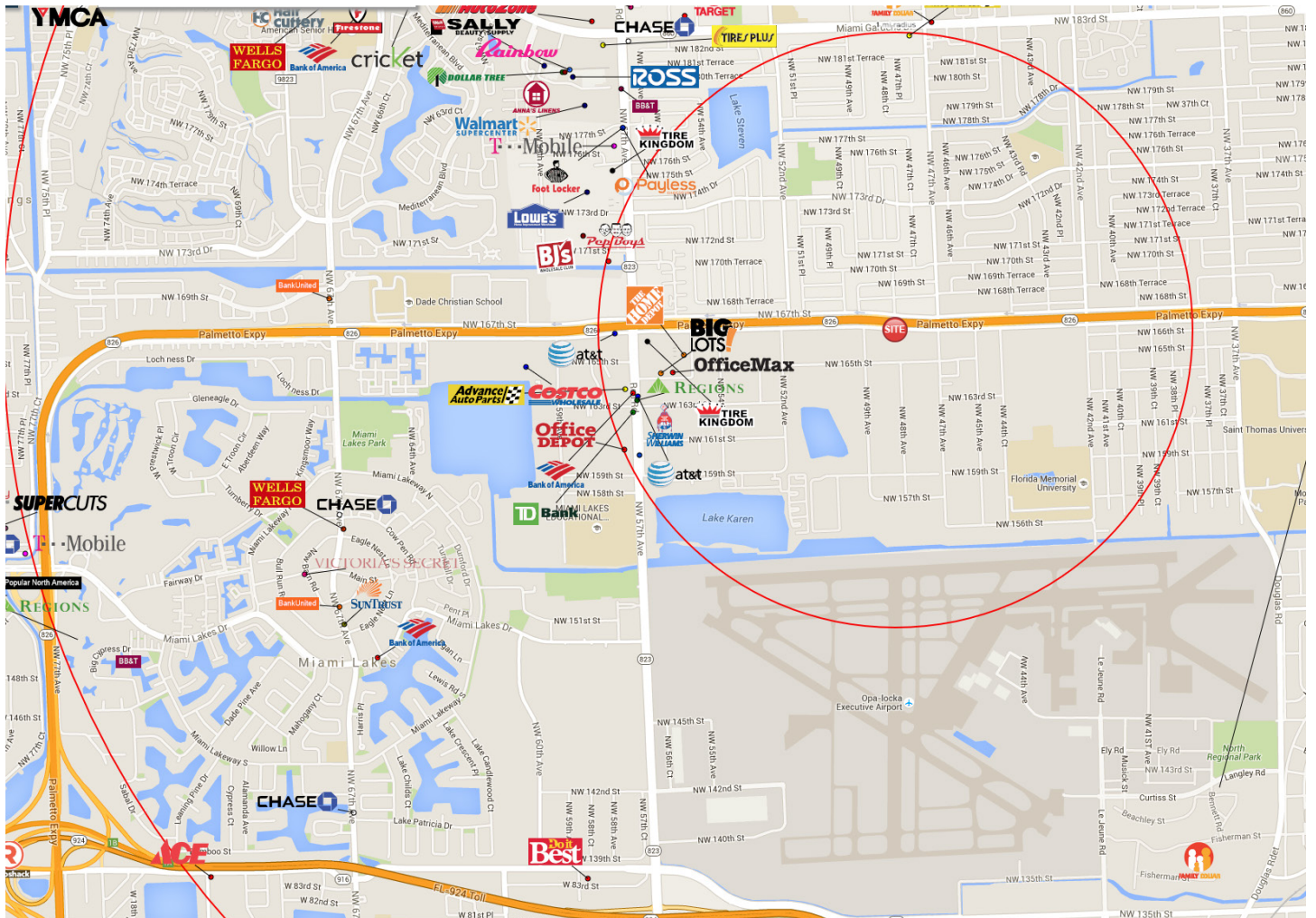
© Lightle Beckner Robison, Inc.
All Rights Reserved

Information contained herein has been obtained from others and considered to be reliable;
However, a purchaser or lessee is expected to verify all information to his/her own satisfaction.

SALE

FLEX/RETAIL CONDO

4808 NW 167th St.
Miami Gardens, FL 33014



www.TeamLBR.com



**LIGHTLE
BECKNER
ROBISON**

Brian L. Lightle, CCIM, SIOR | President | Broker
(321) 722-0707 x14 | Brian@TeamLBR.com

70 W. Hibiscus Blvd. · Melbourne, Florida 32901 · (321) 722-0581 fax

© Lightle Beckner Robison, Inc.
All Rights Reserved

Information contained herein has been obtained from others and considered to be reliable;
However, a purchaser or lessee is expected to verify all information to his/her own satisfaction.