



Commercial  
Real Estate FL

## BANK OWNED COMMERCIAL SITES

6727-6730 Guava Drive  
Edgewater, Florida 32141

### Property Summary

Property: 6727-6730 Guava Drive  
Parcel No: 8402-01-06-7270  
8402-01-06-7290  
Status: For Sale  
Size: 0.40+/- Acres  
Price: **\$26,000**  
Zoning: B-2 'Neighborhood Business'

Population (est.):	<u>1 MILE</u> 9,010	<u>3 MILES</u> 25,805	<u>5 MILES</u> 39,121
--------------------	------------------------	--------------------------	--------------------------

Average HHI (est.):	<u>1 MILE</u> \$52,717	<u>3 MILES</u> \$55,885	<u>5 MILES</u> \$56,511
---------------------	---------------------------	----------------------------	----------------------------

Property Highlights:

- Bank Owned Commercial Sites
- 160 feet of frontage on Guava Drive x 125 feet deep
- Easy access to SR 442
- Approximately 3.87 miles to Interstate 95
- Great location to Build for Use or Investment

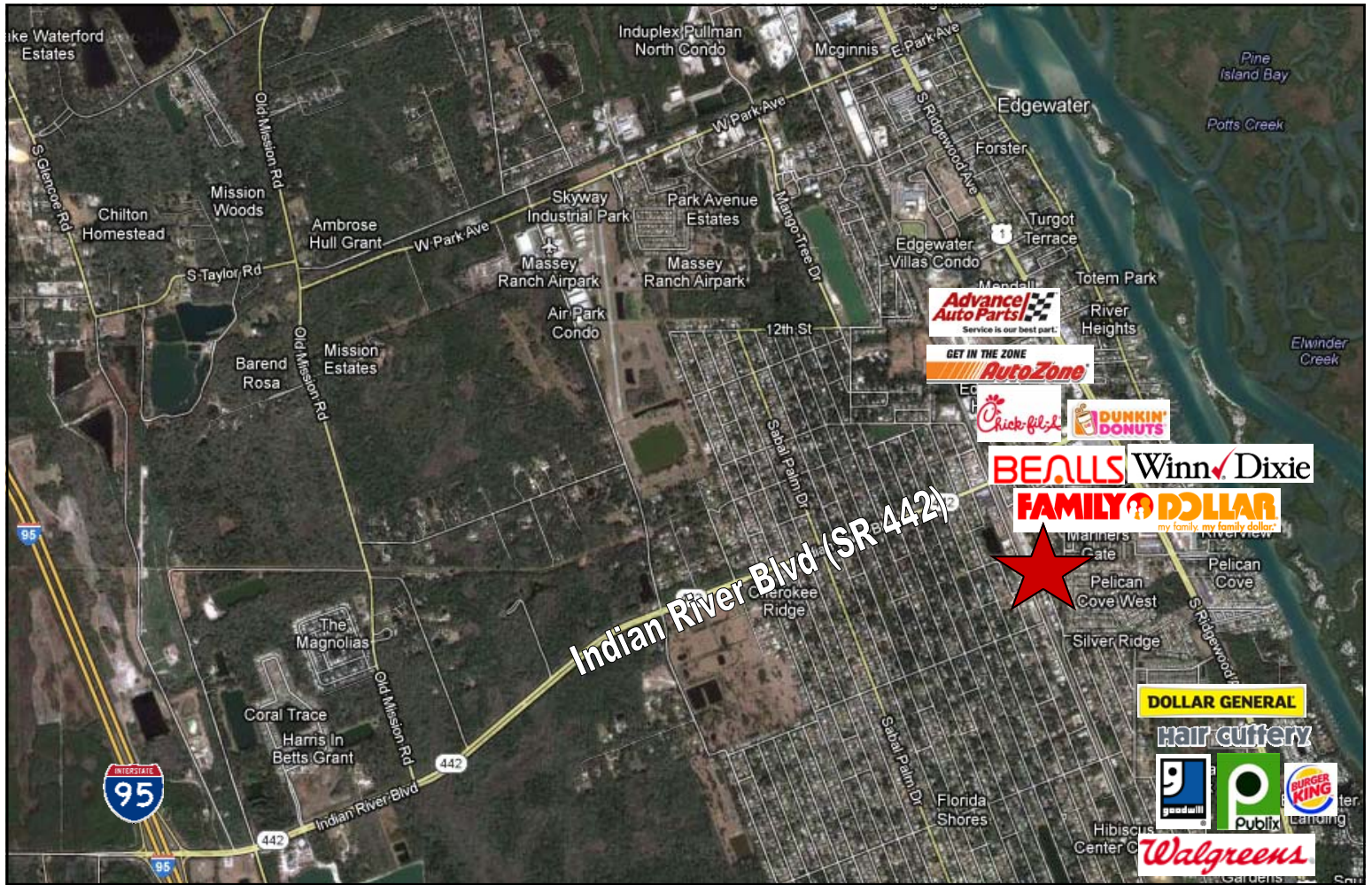


Rock Solid in Commercial Real Estate

John W. Trost, PA, CCIM  
(386) 253-8565 Ext.115 Office  
(386) 295-5723 Mobile  
JTROST@CCIM.NET

[www.JohnTrost.com](http://www.JohnTrost.com)

Information contained herein is believed to be accurate, but not guaranteed and may change without notice.



Information contained herein is believed to be accurate, but not guaranteed and may change without notice.

©2012 BRER Affiliates Inc. An independently owned and operated broker member of BRER Affiliates Inc. Prudential, the Prudential logo, and the Rock symbol are service marks of Prudential Financial, Inc. and its related entities, registered in many jurisdictions worldwide. Used under license with no other affiliation with Prudential.