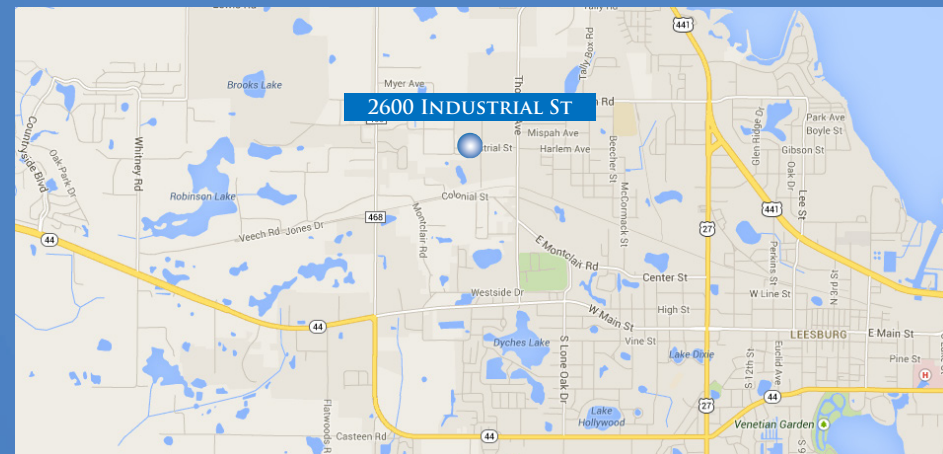


FOR SALE

COMMITMENT. INTEGRITY. TEAM. EXCELLENCE.

2600 INDUSTRIAL STREET
LEESBURG, FL 34748

ONLY \$8.88 PER SQ. FT.!



MATT SULLIVAN, SIOR, CCIM
Managing Director, Principal
matt.sullivan@citepartners.com
407.930.1802

WILSON MCDOWELL, SIOR, CCIM
Managing Director, Principal
wilson.mcdowell@citepartners.com
407.930.1801

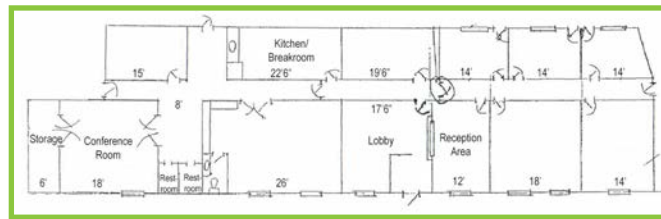
BOBBY ISOLA, CCIM
Director, Principal
bobby.isola@citepartners.com
407.930.1804

 CITE PARTNERS

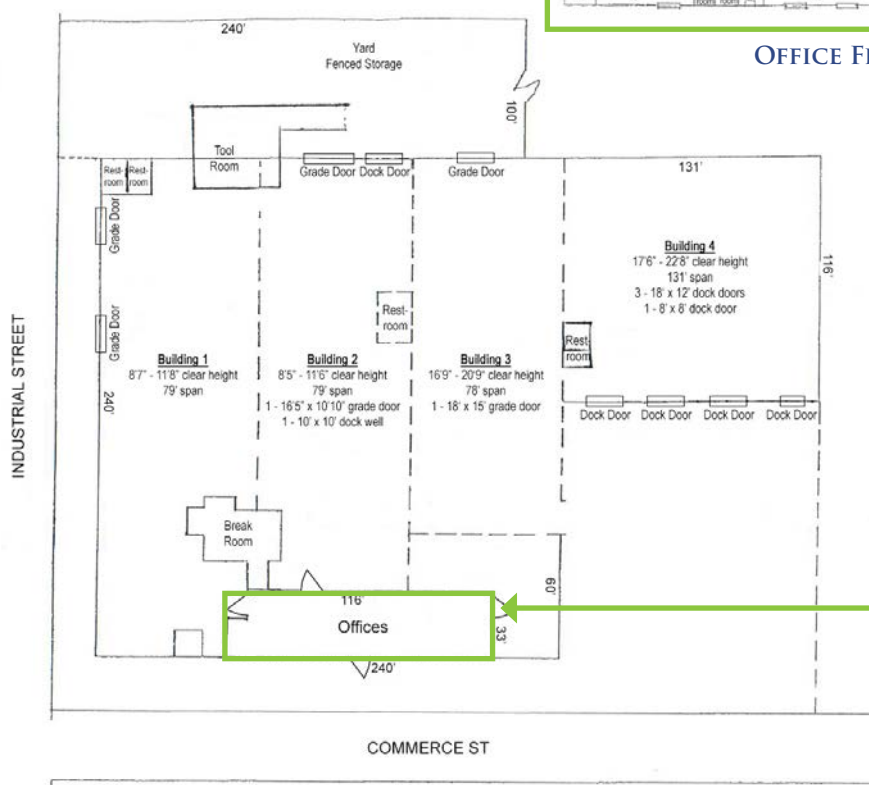
2600 INDUSTRIAL ST

THE PROPERTY

- Building Size: 73,200 SF
- 5,874 SF of office
- 5 dock doors and 4 grade doors
- 12' to 24' Clear Height
- 4" natural gas supply
- Heavy Power:
 - MDP1 - 1600 amps, 120/240 volt, 3 phase
 - MDP2 - 600 amps, 277/480 volt, 3 phase
- Sprinklers
- Metal construction
- Built in 1966 and 1980
- 3.50 Acres
- Zoned M-1, City of Leesburg
- Excellent location offering immediate access to US 27 and US 441



OFFICE FLOOR PLAN



SITE PLAN

THE PRICE

- **REDUCED TO \$650,000 or only \$8.88/SF!!**

MATT SULLIVAN, SIOR, CCIM
 Managing Director, Principal
 matt.sullivan@citepartners.com
 407.930.1802

WILSON MCDOWELL, SIOR, CCIM
 Managing Director, Principal
 wilson.mcdowell@citepartners.com
 407.930.1801

BOBBY ISOLA, CCIM
 Director, Principal
 bobby.isola@citepartners.com
 407.930.1804

CITE PARTNERS
 100 South Orange Ave., Suite 500
 Orlando, FL 32801
 www.citepartners.com