

FREESTANDING BUILDING ON 3.24+/- ACRES

1790 S. Nova Road
South Daytona, Florida 32119

Property Summary

Property: 1790 S. Nova Road
 Parcel No: 5344-16-00-1294 & 5344-16-00-1296
 Status: For Sale
 Size: 24,884 SF on 3.24+/- Acres
 Price: **\$1,450,000**
 Year Built: 1973
 Zoning: BHC 'Business Heavy Commercial'

Population (est):	<u>1 MILE</u> 8,855	<u>3 MILES</u> 62,081	<u>5 MILES</u> 124,230
Avg. Household Income (est.):	<u>1 MILE</u> \$41,532	<u>3 MILES</u> \$44,557	<u>5 MILES</u> \$45,606

Traffic Count: 26,500 vehicles per day - Nova Road



- Property Highlights:
- Great frontage on busy Nova Road
 - 500+/- feet of frontage on Nova Road
 - Steel Frame Building used as skating rink with second story quarters
 - Permitted uses include: RV Storage, Truck/Trailer Leasing, Mini-warehouse, Boat Sales, Rental Equipment, Building Supply Sales, Moving and Storage Facility, etc.
 - Approximately 0.77 miles to Beville Road and 4.34 miles to Interstate 95

Rock Solid in Commercial Real Estate

John W. Trost, PA, CCIM
 (386) 253-8565 Ext.115
 (386) 295-5723 Mobile
 JTROST@CCIM.NET

www.JohnTrost.com

Information contained herein is believed to be accurate, but not guaranteed and may change without notice.

PICTURES

PRUDENTIAL COMMERCIAL

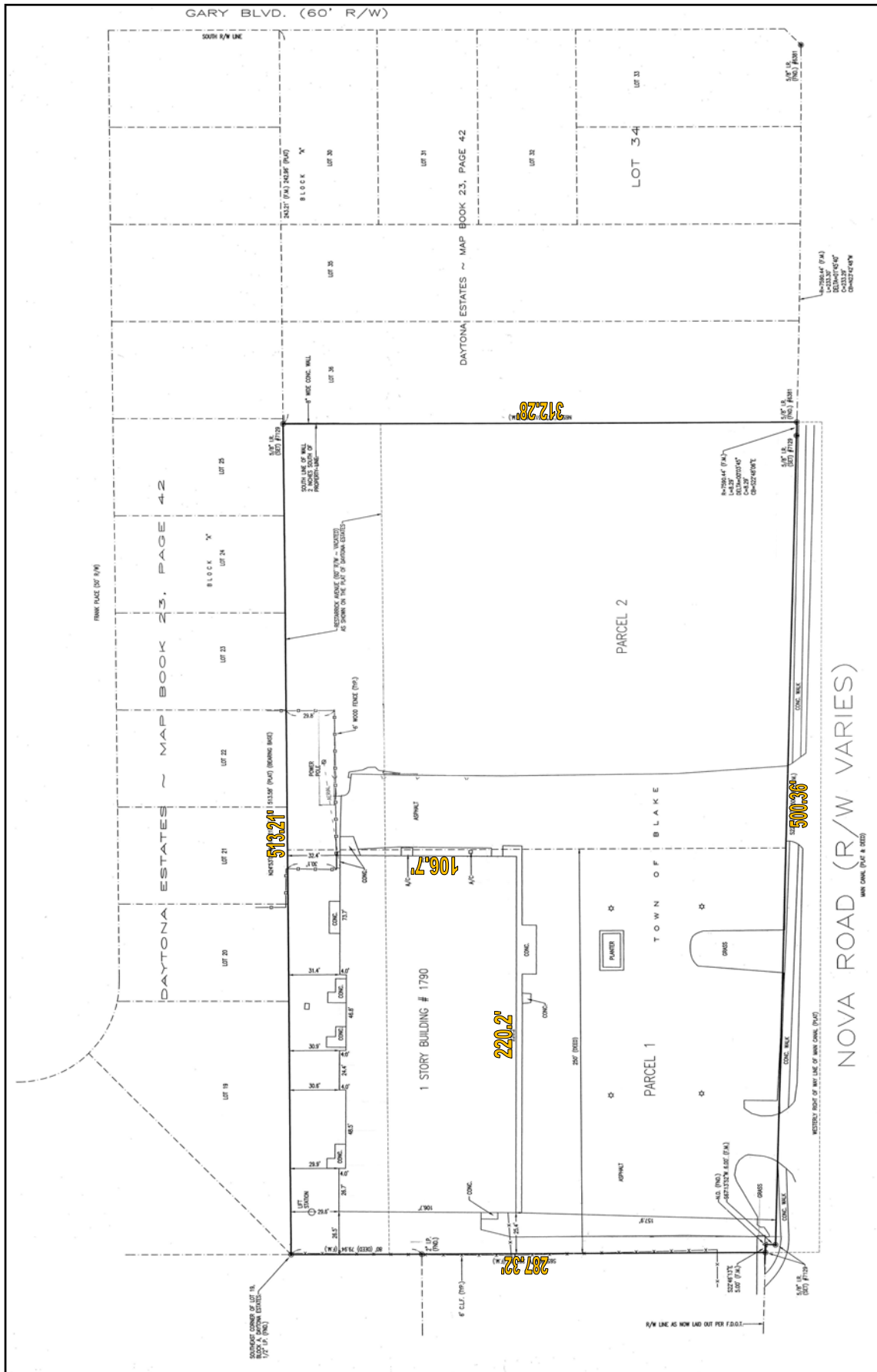


ROCK SOLID IN COMMERCIAL REAL ESTATE

Information contained herein is believed to be accurate, but not guaranteed and may change without notice.

SURVEY

PRUDENTIAL COMMERCIAL



ROCK SOLID IN COMMERCIAL REAL ESTATE

Information contained herein is believed to be accurate, but not guaranteed and may change without notice.

©2012 BRER Affiliates Inc. An independently owned and operated broker member of BRER Affiliates Inc. Prudential, the Prudential logo, and the Rock symbol are service marks of Prudential Financial, Inc. and its related entities, registered in many jurisdictions worldwide. Used under license with no other affiliation with Prudential.

